



The BAYLOR Game

RICE STADIUM ☆ 2:00 P.M. ☆ NOV. 28, 1953

OFFICIAL PROGRAM — TWENTY FIVE CENTS



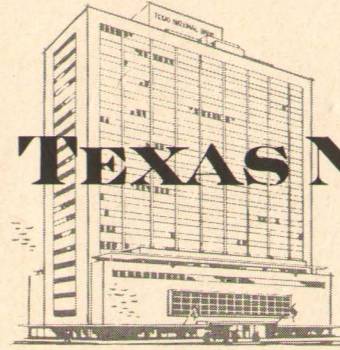
ONLY ONE
CAN BE
BEST

Taste Tru-Ade
and judge for yourself



THE
Natural
SOFT DRINK

Our
future
banking
home
now
under
construction



TEXAS NATIONAL BANK
A MERGER OF
SOUTH TEXAS NATIONAL BANK AND UNION NATIONAL BANK
MEMBER FEDERAL DEPOSIT INSURANCE CORPORATION
CAPITAL AND SURPLUS \$10,000,000 • 213-220 MAIN

COMPLIMENTS
OF
HERRIN TRANSPORTATION COMPANY
2300 WALKER FA-5111

Represented for National Advertising by DON SPENCER COMPANY, Inc., 271 Madison Ave., New York 16, N.Y.

BOARD OF GOVERNORS OF THE RICE INSTITUTE

TRUSTEES



GUS S. WORTHAM



GEORGE R. BROWN
Chairman



LAMAR FLEMING, JR.



WILLIAM A. KIRKLAND



J. NEWTON RAYZOR



DR. FREDERICK R. LUMMIS



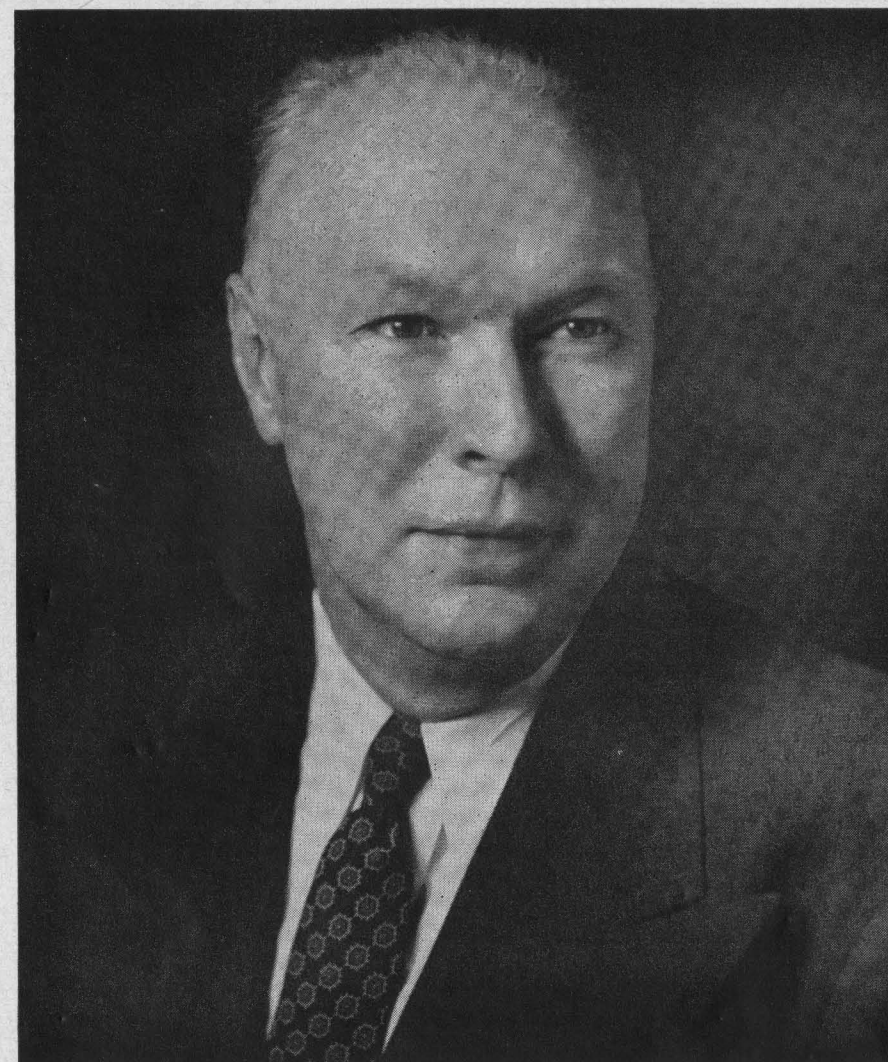
JOHN S. IVY

TERM MEMBERS

DANIEL R. BULLARD
ROBERT P. DOHERTY
FRANCIS T. FENDLEY

WILLIAM H. FRANCIS
MASON G. LOCKWOOD

H. MALCOLM LOVETT
J. T. RATHER
HARMON WHITTINGTON



DR. WILLIAM V. HOUSTON
President, The Rice Institute

On behalf of the Rice Institute I wish to extend a cordial welcome to all who are here today. We know the friends of Rice enjoy these games and are interested not in the score alone but in the meeting of challenge with courage and sportsmanship. Above all, we hope that you join with us and our visiting institution in believing that the greatest task in the country today is the education and development of this new generation into responsible, loyal, intelligent American citizens.

W. V. HOUSTON

RICE INSTITUTE ATHLETIC STAFF

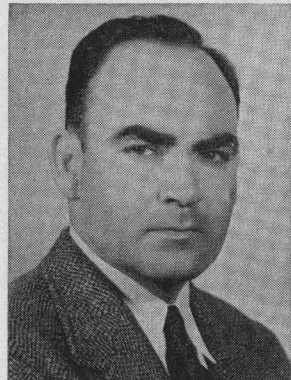
JESS NEELY AND AIDES



Here is the veteran coaching staff of Rice Institute that rates as one of the finest in the nation, and one of the most experienced in that four members have been in the coaching profession for over twenty years.

Seated is the head football coach and athletic director, JESS NEELY, who this fall is serving his fourteenth year as head man of the Owls. Grouped behind him (left to right) are assistants CECIL GRIGG, who is in his twentieth year on the Rice staff; HAROLD STOCKBRIDGE, who works with varsity backs in the spring, freshmen in the fall; CHARLES MOORE, head freshman coach in football and basketball; JOE DAVIS, valuable coaching aide to Neely for 22 years at Clemson and Rice; A. M. "RED" BALE, able end coach; DELL MORGAN, veteran assistant; and EDDIE WOJECKI, well-known athletic trainer.

ADMINISTRATIVE



EMMETT BRUNSON
Track Coach
Bus. Mgr. of Athletics



DON SUMAN
Basketball Coach



CARROLL MARTIN
Office Manager



BILL WHITMORE
Sports News Director

There are many persons who serve "behind the scenes" in the college grid scene. Pictured here are four full-time administrative members of the Rice staff. EMMETT BRUNSON is athletic business manager, with many and varied duties including the handling of football tickets. "Brun" also is Rice track and field coach, and as a former Olympic coach ranks high in that field. DON SUMAN, best known as head basketball coach of the Owls, in the cagers' "off season" supervises the concessions and football program. CARROLL MARTIN serves as office manager, and has numerous duties in the business office and stadium activities. BILL WHITMORE is sports news director, handling news releases, photos, program editorial copy, press box supervision, and other matters.

There are many others in the administration. MRS. CAROL ERICKSON is secretary for Mr. Neely and the coaches, while MISS JANE ALBERTSON and MRS. MARY KLAPP are full time staff members in the business office. There are many others who serve in a part time capacity in various jobs during the grid season, including supervisor BUDDY BRENNAN and the 400 uniformed ushers who give Rice Stadium fans the finest service along these lines of any stadium in the Southwest.

OFFICIAL WATCH FOR THIS GAME



Longines



The World's Most Honored Watch



LONGINES WATCHES ARE OFFICIAL
FOR TIMING
CHAMPIONSHIP SPORTS IN ALL
FIELDS THROUGHOUT THE WORLD

*Product of
Longines-Wittnauer Watch Company*

As constructors of the Rice Stadium, we take great satisfaction from the contests played here—not from the final score, but from the knowledge that on this field there is rivalry without rancor, defeat without dishonor, and victory without tyranny.

In this great game look not for the shoddy, the dishonest, the shirker and the fraud, for here he cannot survive.



BROWN-BILT

Brown & Root, Inc.

Engineers — Constructors

HOUSTON

The Rice Athletic Association Would Appreciate Your Patronizing Our Advertisers

FACTS ABOUT RICE STADIUM

The massive, modern structure that is the Home of the Owls seats 70,000 fans and is one of the showplaces of Houston, largest city in the South.

Located on the southwest section of the Rice campus, the stadium is about seven miles south of downtown Houston, in close proximity to the rapidly expanding area of the city that includes the Shamrock Hotel, the new Prudential Building, and the great Medical Center of several new hospitals and medical schools. Just a short distance from Houston's main thoroughfare, South Main Street, the stadium is bound by Rice Boulevard, University Boulevard, and Greenbriar.

The only new stadium of such size to be constructed in the nation in many years, the designers and builders were able to include many new features and do away with the bad ones of other major stadia. Completed in September of 1950, the double deck structure was completed by the Brown & Root firm in just nine months!

The lower stands of Rice Stadium form a complete bowl seating 40,000, while the two upper decks on the sides extending beyond the goal lines seat 15,000 each.

There are many outstanding features of the stadium, but to list just a few that have particularly impressed the thousands who have attended games there to date (Rice home attendance will go over the 1,000,000 mark for four seasons in '53);

The vast parking area. Fans who must pay a premium to park in vacant lots, etc., at other stadia are especially happy with the huge asphalt-topped parking

grounds that surround the stadium and hold up to 10,000 automobiles.

The box seats. Opera-type fold back chairs that provide a maximum in comfort run beyond the goal lines on the west side from the 32nd to the 44th row.

Proximity to the field. Built strictly for football, the stadium has no track. The first row seats are within 35 feet of the sidelines. The stands are inclined gradually at a concave angle which provides for a greatly improved direct line of vision for spectators.

Lights and scoreboards. One of the best lighted athletic fields anywhere, light intensity on the field measures 55 foot candles. There are 16 light towers extending from the upper deck so that light poles do not obstruct the view of the fans. Each tower contains 24 lamps. There are two electrically operated, easily read scoreboards at each end of the stadium so that no one has to turn around to check the score, time to play, yardage, etc.

There are four entrances to the stadium, one at each corner, and all very wide. Spectators may enter at any gate and walk to their section inside the stadium on a wide concourse that surrounds the lower deck, only a few feet above ground level. Located on the concourse are many refreshment stands, rest rooms, telephone booths, first aid station, etc.



Make The Shamrock football week-end headquarters, and be sure to schedule . . .

- **The Cavalcade of Stars**

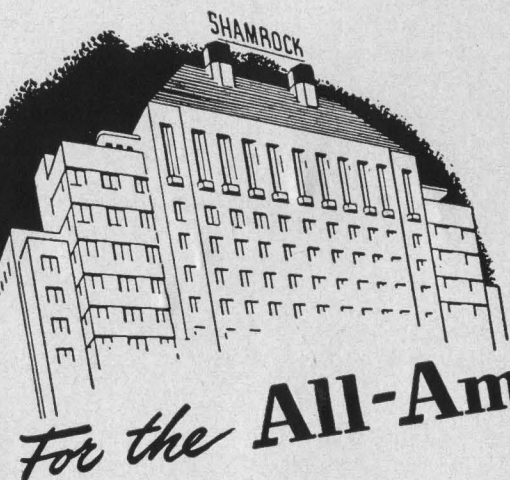
The parade of all-star entertainment nightly except Mondays in The Emerald and Shamrock Rooms.

- **Saturday Matinee**

1 to 3 p.m. every Saturday with luncheon, dancing and complete floor show; \$3:00 for adults, \$2.00 for children.

- **The Pine Grill**

Special pre-game luncheon and supper . . . prompt service . . . reasonably priced.



- **SPECIAL CHARTERED BUSES**

to and from Rice Stadium and The Shamrock. See assistant manager for tickets.

- **SPECIAL ROOM RATES FOR WEEK-ENDS**

Three days, \$18.00 single, \$24.00 double.

For the **All-American Week-End**

The Shamrock



GLENN McCARTHY, President

FRANK H. BRIGGS, V. P. and Gen. Mgr.

Best wishes, always
to the BLUE and GRAY!

Cameron
IRON WORKS, INC.

MANUFACTURERS OF VALVES, FORGINGS, AND OIL WELL SPECIALTIES

The Rice Athletic Association Would Appreciate Your Patronizing Our Advertisers

Today's Game . . .

By **BILL WHITMORE**
Rice Sports News Director

The biggest and most important football game of the 1953 season in Southwest Conference action takes place on the Rice Stadium gridiron this afternoon. While this report had to be prepared in advance of the game, it appeared certain the Gulf Coast area fans would take to this attraction in a big way to provide the largest crowd of the year to see a league contest.

A grid "natural" if there ever was one, this dramatic climax of the closest SWC race in years finds Rice and Baylor battling it out for at least a share of the conference crown, and with the Cotton Bowl host team depending on the outcome.

Almost overlooked in the hullabaloo of the effect of the outcome of this game on the conference race is that today's contest is of particular significance to the sixteen seniors on the Rice squad. Regardless of the result today, this is the final appearance of these men as players in Rice Stadium. The Owl coaches, fellow players, and fans will regret their absence next year. All these men have seen game action over their three-year varsity careers, and all performed in a manner to bring credit to their school and their team.

The seniors in uniform on the Rice squad today are: 11—Horton Nesrsta, halfback . . . 19—Bob Garbrecht, fullback . . . 25—Buddy Grantham, quarterback . . . 26—Leroy Fenstermaker, quarterback . . . 42—Don Whittaker, fullback . . . 43—Carl Johnson, halfback . . . 45—"Kosse" Johnson, fullback . . . 55—Leo Rucka, center . . . 62—"Skip" Lee, guard . . . 67—W. C. Treadway, guard . . . 70—John Hudson, guard . . . 72—Max Schuebel, tackle . . . 78—Richard Chapman, tackle . . . 80—Dan Hart, end . . . 88—Sammy Ward, end . . . 89—Blois Bridges, end.

Even if you would eliminate such factors as the effect of the game on the SWC title and Cotton Bowl nominee, and that it is the final home game of the Rice seniors, there still are many things about this one today that have great appeal to the football fan.

Here is the end-of-season heads-on showdown between the two strongest offensive units in the league. The Owls have gained a highly impressive 3,178 yards in nine games with 2,383 of that total picked up by rushing to rank among the nation's leaders both in total offense and rushing. And the Bears are just a shade behind in both departments.

Throughout the season Baylor has smashed its way to convincing victories through the well-coordinated offense featuring the aptly named "Fearsome Foursome"—the red-hot backfield of quarterback Cotton Davidson, halfbacks Jerry Coody and L. G. Dupre, and fullback Allen Jones. The Owls hope to counter defensively with a highly regarded line recently termed the "Fierce Five" by a sports-writer—tackles Richard Chapman and Max Schuebel, guards John Hudson and Kenny Paul, and center Leo Rucka, and with this five aided by able ends Dan Hart and Blois Bridges, plus "utility" end Marshall Crawford.

But to show how explosive a game this could be, there are Rice partisans who contend the Owls have a more dangerous backfield than the "Fearsome Foursome" and there are Baylor fans who believe "that good old Baylor line" can more than hold its own with the powerful Rice forwards.

The Rice backfield standouts are paced, of course, by the great David "Kosse" Johnson. A tremendous and consistent player all season, the Baytown senior goes into his final home game with a brilliant rushing record of 807 yards and could be the second all-time high in that department in conference history by making a net of 35 today. Teammate Dicky Moegle, the junior from Taylor, is second only to "Kosse" in league rushing with 693 to date. The Owls famed 1-2 punch performers also are in a hot race with Baylor's Dupre for individual scoring honors, with "Long Gone" Dupre leading with 50, Moegle at 49, and Johnson 45. Other Rice back standouts include right half Gordon Kellogg, and under a unique substitution maneuver, the four quarterbacks who share that job almost equally—Buddy Grantham, "Pinky" Nisbet, Leroy Fenstermaker, and Atchley Proctor. And, of course, there is the crowd favorite in the amazing Horton Nesrsta, who plays top college football although now weighing only 138 pounds.

This Rice stable of fine backs, though, might be checked today if that rugged Baylor line comes through with a top performance. And Bear fans are hoping such hands as J. R. Smith, Clarence Dierking, Pete Erben, Bill Lucky and others can contain the Owls.

No matter who wins, the thousands of fans who flock to Rice Stadium this afternoon should see a great gridiron spectacle in a splendid setting that provides a grand climax to one of the SWC's most exciting campaigns.

W. Cecil Sisson Mortgage Company

Complete Financial Service

Roy Bean, Loan Officer

402 Rusk Building

Represented for National Advertising by DON SPENCER COMPANY, INC., 271 Madison Ave., New York 16, N.Y.

Hunting for the best

DODGE or PLYMOUTH DEAL?



JACKSON HAS IT!

40 YEARS OF DEPENDABLE SERVICE

JACKSON MOTORS

ALBERT H. BERRY • JACK W. JACKSON
TEXAS' OLDEST DODGE AND PLYMOUTH DEALER
2404 SOUTH MAIN • HOUSTON

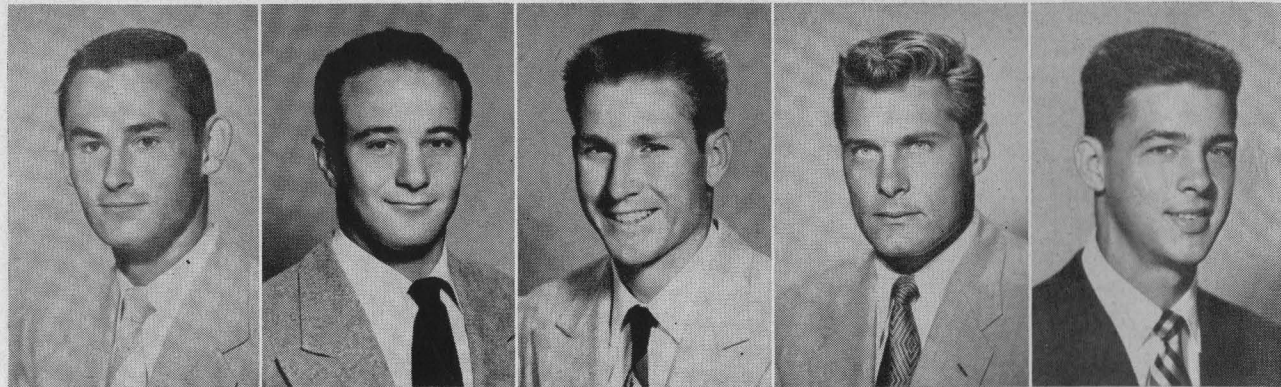
The Rice Athletic Association Would Appreciate Your Patronizing Our Advertisers

Spring Air
MATTRESSES
TRADE MARK REG. U.S. & CAN. PAT. OFF.

FREDERICK PARKER

PARKER BEDDING COMPANY

JOEL PARKER



11—Horton Nesrta

14—Mendel Laviage

15—John Zimmerman

19—Bob Garbrecht

21—Atchley Proctor

(SEE THUMBNAIL SKETCHES ON PAGES 30 AND 31)

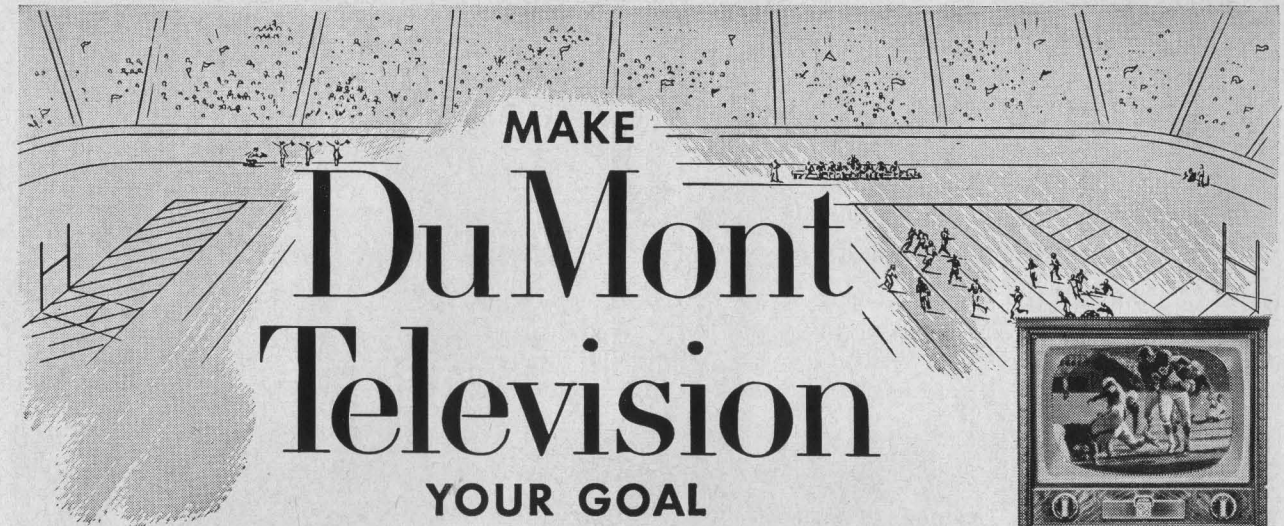
**20th
YEAR**



HUMBLE
SOUTHWEST CONFERENCE
**Football
Broadcasts**

Enjoy them every Saturday

GO TO THE GAMES WITH HUMBLE



MAKE
**Du Mont
Television**

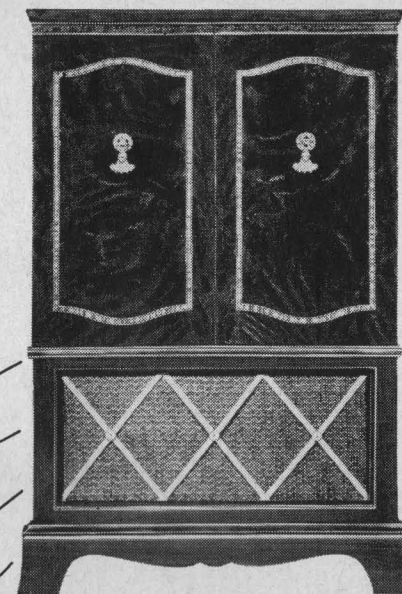
YOUR GOAL

for the best football season of your life!

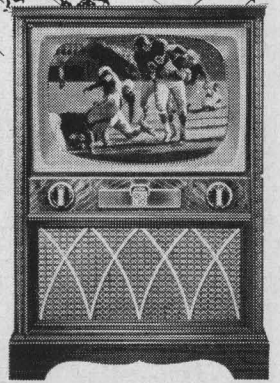
Du Mont Invites
**COMPLETE*
COMPARISON**

...feature by feature
...at every price!

- ★New Clear-Picture Power
High-resolution picture tubes!
- ★Du Mont Selfocus* Tube
First with automatic focus!
- ★Optional 82-Channel Tuning
Most sensitive tuning in television!
- ★Fringe Area Excellence
Best reception everywhere!
- ★Truer Tone
Finer circuits, choice woods!



Du Mont de Luxe WINDSOR
21-inch Du Mont Selfocus* tube. Fine 18th Century cabinet on casters, hand-rubbed mahogany finish. Phono jack. 82-channel tuning optional. Built-in UHF-VHF antenna.



Du Mont de Luxe BRADFORD
English Traditional cabinet, mahogany finish. 21-inch Du Mont Selfocus* tube. Phono jack. Built-in UHF-VHF antenna. Optional 82-channel tuning.

Be as proud and happy as the man with seats on the 50-yard line! Follow the game, close up, to either goal! You'll never see better football on television than you see with the new Du Mont—first to match or surpass every other set in every feature at every price!

- ★Custom-Crafted Cabinets
Famous design, finish, construction!
- ★Quality Controls
—of materials, parts, production!
- ★Thrifter Ownership
Save on set operation...servicing...trade-ins!

Imagine owning **DU MONT[®]** ...from \$199⁹⁵**
QUALITY TELEVISION

*Trade Mark

(for 17" table model, not illustrated)

**NO EXTRA CHARGES for full-year picture tube Warranty, 90-day parts Warranty, Federal Excise Tax, built-in UHF-VHF antenna, or mahogany finish. Limed oak or blond finish slightly higher.

H. W. SINCLAIR DISTRIBUTING CORP.

SALES: JU-3557

4001 SOUTH MAIN

SERVICE: JA-3908

AT YOUR AUTHORIZED DU MONT DEALER'S NOW!

Production Service Oil Corporation

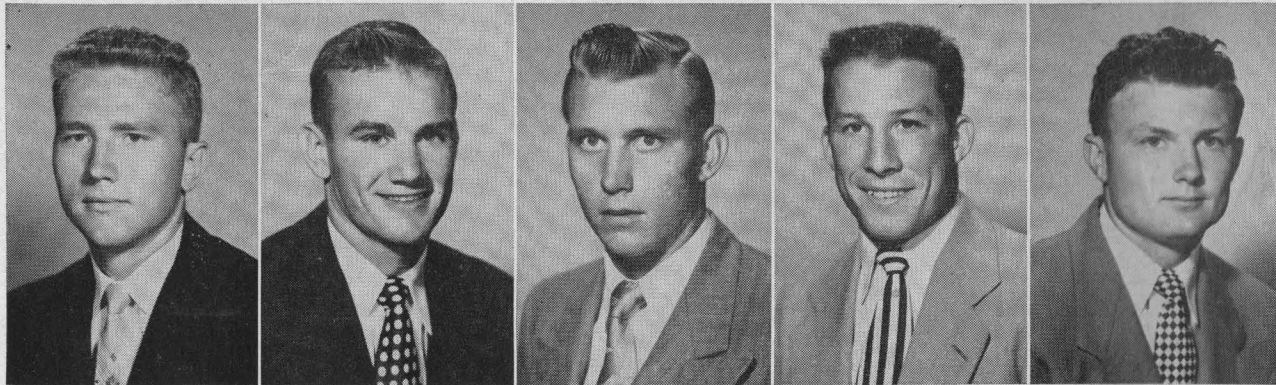
810 City National Bank Building

J. F. Corley

Grover J. Geiselman, Jr.

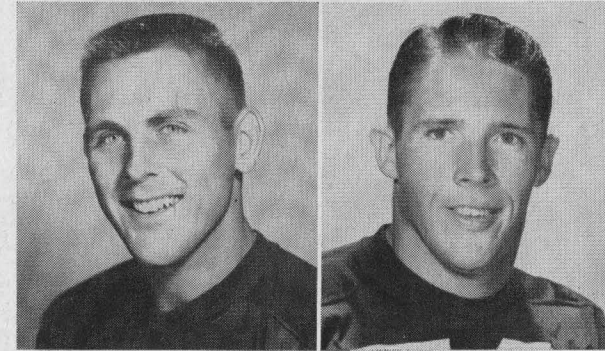
BEST WISHES
TO THE OWLS

W. S. Bellows Construction Corp.



23—John "Pinky" Nisbet 25—Buddy Grantham 26—Leroy Fenstermaker 31—Morris Stone 32—Bill Gaskamp

(SEE THUMBNAIL SKETCHES ON PAGES 30 AND 31)



10—Sammie Burk

65—Jack Davis

The first Rice Institute gridgers to return from military service during the Korean conflict are the two men pictured above, who are members of the 1953 Owl squad. Sammie Burk, who was called in by the Air National Guard right after the Rice grid season opener in 1951, was a teletype operator in the Air Force. He lettered with the Owls as a soph in '50. Davis entered the Air Force shortly after the 1950 season ended, and he returned after his discharge in early September of this year.

Rice Institute welcomes the return of these students, and expresses appreciation to them and all the members of the Armed Forces for their service to the nation.

COMPLETE
METROPOLITAN
SERVICE

WITH
RESIDENTIAL
CONVENIENCE



*Serving Bellaire
and Adjacent Area*

AUTO TELLER SERVICE

FIRST STATE BANK

BELLAIRE, TEXAS

MOhawk 3413

5123 BELLAIRE BOULEVARD

MEMBER FEDERAL DEPOSIT INSURANCE CORPORATION

build your BANK CREDIT



with **BANK LOANS**
**THE NATIONAL
BANK OF COMMERCE**
OF HOUSTON

Gulf Building, Houston, Texas "The Bank for All the People"
MEMBER FEDERAL DEPOSIT INSURANCE CORPORATION

The STAR "PLAYERS"
on the
UNITED GAS TEAM
• • •
DEPENDABILITY
and
ECONOMY

ALWAYS A WINNING
COMBINATION



FOR THE BEST IN GAS SERVICE CALL...
THE BIGGEST BARGAIN IN YOUR HOME TODAY
PHONE AT 5111

Drinks in Stadium are cooled with

Texas Ice "Sized Ice"

TEXAS ICE & FUEL COMPANY

6301 Harrisburg

Wayside 2154

The Rice Athletic Association Would Appreciate Your Patronizing Our Advertisers

Represented for National Advertising by DON SPENCER COMPANY, INC., 271 Madison Ave., New York 16, N.Y.

Foote's Cafeteria

Houston's Finest Suburban
Dining Room

2 Blocks West of Stadium

Continuous Service 11:00 A.M. to 8:30 P.M.

2407 RICE BOULEVARD

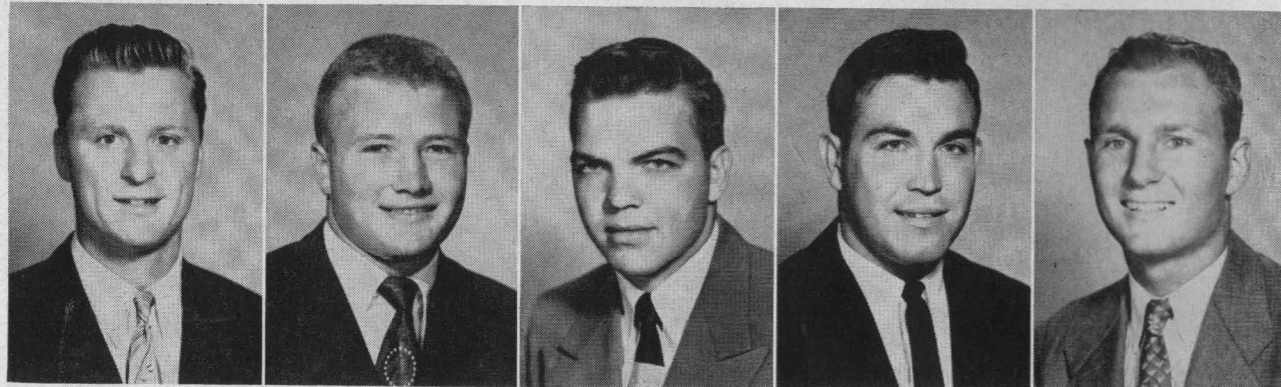
7 Days a Week

CONSOLIDATED CHEMICAL INDUSTRIES INC.

Heavy Chemicals for Industry

640 MELLIE ESPERSON BLDG.

HOUSTON 2, TEXAS



35—Bill Keller

36—Gordon Kellogg

39—Steve Curry

40—Mac Taylor

41—John Faseler

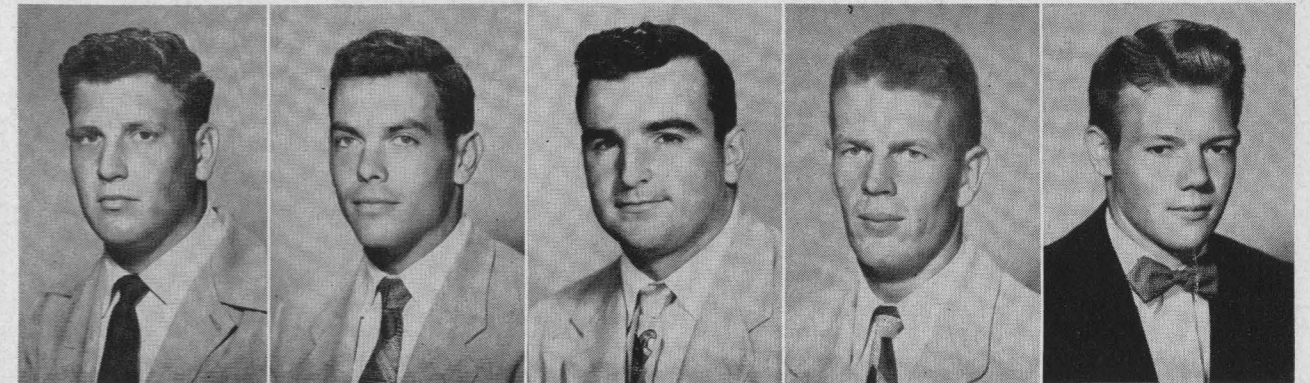
(SEE THUMBNAIL SKETCHES ON PAGES 30 AND 31)

NAME BRAND Sporting Goods

OPEN DAILY 9 A.M.-6 P.M.

HOUSTON SPORTS SHOP

4717 Main Street, Houston • Telephone KE-8660, JU-2131



42—Don Whittaker

43—Carl Johnson

44—Jerry Hall

45—"Kosse" Johnson

47—Dicky Moegle

(SEE THUMBNAIL SKETCHES ON PAGES 30 AND 31)

Everybody cheer
for the "DOUBLE GOOD" beer...

Southern Select



After the game . . . when you're double dry . . .
Double Good Southern Select is the beer to try!
Once you do you'll agree that beer was never so good before.
Ask for Double Good
Southern Select.



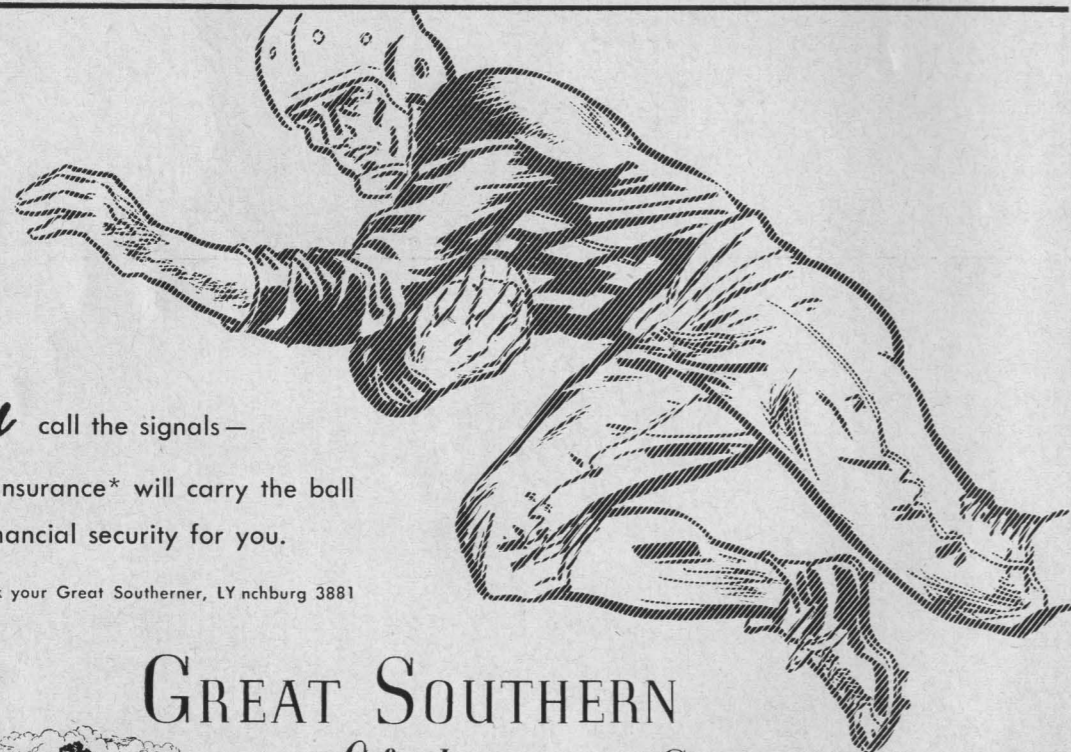
Galveston-Houston Breweries, Inc., Galveston, Texas

Represented for National Advertising by DON SPENCER COMPANY, INC., 271 Madison Ave., New York 16, N.Y.

You call the signals—

Life Insurance* will carry the ball
to financial security for you.

*Ask your Great Southerner, LY nchburg 3881



GREAT SOUTHERN
Life Insurance Company



4310 Dunlavy • Houston 6, Texas

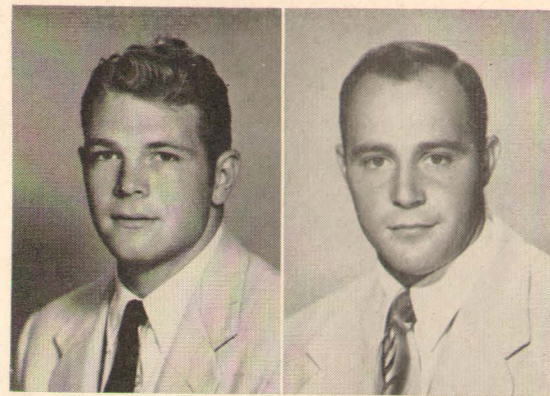
SELECT AND BRAND THE STEAK OF YOUR CHOICE

Home of the **Finest Steaks** and the **Big Baked Potatoes**

Ye Old College Inn

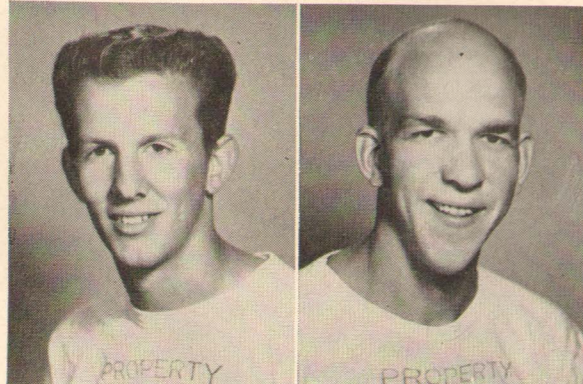
6545 MAIN STREET
LY-6484

5 to 11 P.M. — Sundays 12 to 9 P.M.
Closed Tuesdays



48—Page Rogers

49—Gino Biasatti



John Wolda, Manager

Bill Davis, Manager

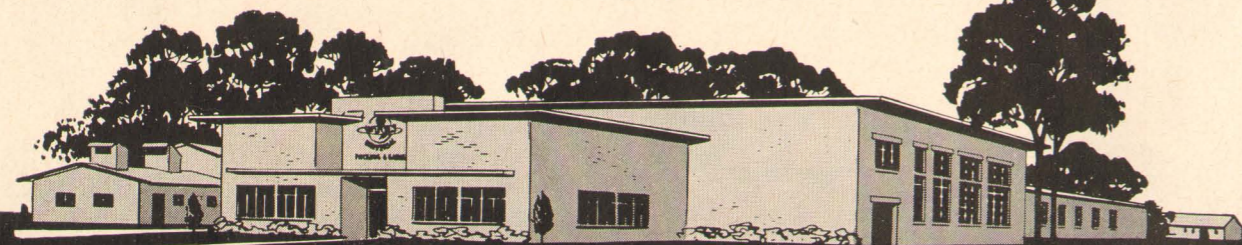
PROGRESS...

We have combined well over 100 years of practical experience and technical knowledge with honest endeavor . . . to manufacture **QUALITY PRODUCTS** that have gained the confidence and high regard of our customers everywhere.

Our **MODERN, UP-TO-DATE**, ever-expanding plant is capable of handling your requirements.



• Houston Owned and Operated



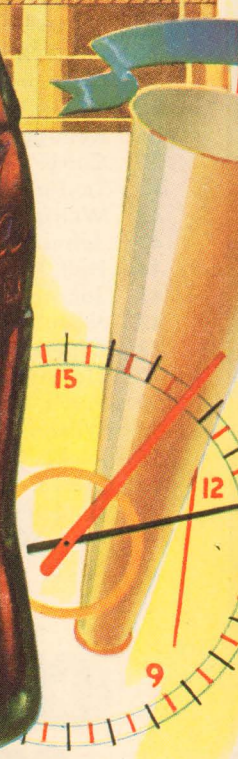
UNIVERSAL PACKING AND GASKET COMPANY

5200 Clinton Drive

Houston 20, Texas

"The Official Watch for Timing this Game is Longines . . . The World's Most Honored Watch"

REFRESHING



REFEREES' SIGNALS

1. Offside
2. Illegal position, procedure or motion
3. Illegal shift
4. Delay of game
5. Personal foul
6. Roughness and piling on
7. Clipping
8. Roughing the kicker
9. Unsportsmanlike conduct
10. Defensive holding
11. Illegal use of hands and arms
12. Intentional grounding
13. Illegally passing or handing ball forward
14. Forward pass or kick catching interference
15. Ineligible receiver down field on pass
16. Ball illegally touched, kicked or batted
17. Incomplete forward pass, penalty declined, no play or no score
18. Crawling, helping the runner or interlocked interference
19. Ball dead; if hand is moved from side to side: touchback
20. Touchdown or field goal
21. Safety
22. Time-out
23. First down
24. Start the clock or no more time-outs allowed
25. Ball ready-for-play

SEE PAGE 20 FOR PENALTIES

COPYRIGHT 1953, THE COCA-COLA COMPANY

HOUSTON COCA-COLA BOTTLING COMPANY ★ 2800 BISSONNET

RICE

PROBABLE STARTING LINE-UP

No.	Name	Position
80	DAN HART	LE
78	RICHARD CHAPMAN	LT
70	JOHN HUDSON	LG
55	LEO RUCKA	C
60	KENNETH PAUL	RG
72	MAX SCHUEBEL	RT
89	BLOIS BRIDGES	RE
25	BUDDY GRANTHAM	QB
47	DICKY MOEGLE	LH
36	GORDON KELLOGG	RH
45	DAVID "Kosse" JOHNSON .	FB

THE RICE SQUAD

10	Burk, RH	61	Rayburn, RG
11	Nesrsta, LH	62	Lee, RG
14	Laviage, LH	63	Harpold, RG
15	Zimmerman, QB	64	Siragusa, RG
19	Garbrecht, FB	65	Davis, LG
21	Proctor, QB	66	Terrell, LG
23	Nisbet, QB	67	Treadway, LG
25	Grantham, QB	68	Tully, RG
26	Fenstemaker, QB	70	Hudson, LG
31	Stone, RH	71	Trask, RT
32	Gaskamp, RH	72	Schuebel, LT
35	Keller, FB	73	Cox, RT
36	Kellogg, RH	74	Trenholm, LT
39	Curry, RH	75	Golemon, RT
40	Taylor, LH	76	Moore, LT
42	Whittaker, FB	77	Riviere, RT
43	Johnson, Carl, RH	78	Chapman, LT
44	Hall, FB	80	Hart, LE
45	Johnson, "Kosse", FB	81	Woolbright, RE
47	Moegle, LH	82	Wortham, RE
48	Rogers, RH	84	Crawford, RE
49	Biasatti, FB	85	Costa, RE
50	Purvis, LG	86	Roady, LE
54	Wilson, C	87	Harrison, LE
55	Rucka, C	88	Ward, LE
56	Stewart, C	89	Bridges, RE
59	Lundstedt, C	90	Holland, LE
60	Paul, RG		

CHESTERFIELD
BEST FOR YOU

FIRST

WITH **PREMIUM QUALITY**

Choice of Young America
CHESTERFIELD



BAYLOR

PROBABLE STARTING LINE-UP

No.	Name	Position
81	CHARLES SMITH	LE
70	J. R. SMITH	LT
68	CLARENCE DIERKING	LG
52	JIM TAYLOR	C
73	BILL LUCKY	RG
78	CLYDE LETBETTER	RT
84	WAYNE HOPKINS	RE
19	COTTON DAVIDSON	QB
44	L. G. DUPRE	RH
47	JERRY COODY	LH
37	ALLEN JONES	FB

THE BAYLOR SQUAD

14	Hooper, QB	64	Forderhase, C
18	Peschel, QB	65	Culvahouse, G
19	Davidson, QB	66	Erben, G
23	Jones, HB	67	Card, G
24	Talamantez, HB	68	Dierking, G
29	Anderson, HB	69	Barnett, G
30	Holley, FB	70	Smith, T
31	Talbert, FB	71	Green, T
33	Cowley, HB	72	Clark, T
34	Dupre, FB	73	Bill Lucky, G
37	Jones, FB	75	Knowles, T
40	Sherman, HB	76	Lee, T
42	Sullivan, HB	77	Robinson, T
44	Coody, HB	78	Letbetter, T
47	L. G. Dupre, HB	79	Richie, T
50	Barnard, C	80	Amyett, E
51	Chambers, C	81	Smith, E
52	Taylor, C	82	Black, E
53	Radford, G	83	Davis, E
54	Jackson, G	84	Hopkins, E
55	Harris, C	85	Gremminger, E
56	Hilton, C	86	Bristow, E
57	Liston, FB	88	Miller, E
60	Renfro, G	89	Murray, E
62	Rutherford, G	90	Reid, QB
63	Lucky, G	91	Wentworth, E

CHESTERFIELD
BEST FOR YOU



DELICIOUS



PENALTIES

LOSS OF FIVE YARDS

- | | |
|--|--|
| <ol style="list-style-type: none"> 1. Taking more than five times out during either half (except for replacement of injured player). 2. Illegal delay of game. 3. Failure to complete substitution before play starts. 4. Violation of kickoff formation. 5. Player out of bounds when scrimmage begins. 6. Putting ball in play before Referee signals "Ready-for-play". 7. Failure to maintain proper alignment of offensive team when ball is snapped. Also, | <ol style="list-style-type: none"> 8. Offside by either team or encroachment on neutral zone. 9. Attempt to draw opponents offside. 10. Crawling by runner. 11. Illegal forward pass (includes intentional grounding of forward pass). Also loss of down. 12. Taking more than two steps after Fair Catch is made. 13. Player on line receiving snap. 14. Any violation of the scrimmage formation. |
|--|--|

LOSS OF FIFTEEN YARDS

- | | |
|---|--|
| <ol style="list-style-type: none"> 15. Team not ready to play at scheduled time. 16. Violation of rules during intermission. 17. Illegal return of suspended player. 18. Interference by member of offensive team with defensive player making pass interception. (Also loss of down.) 19. Interference with opportunity of player of receiving team to catch a kick. 20. Illegal use of hands or arms by offensive player. | <ol style="list-style-type: none"> 21. Tackling or blocking defensive player who has made fair catch. 22. Roughing the kicker. 23. Piling up, hurdling, clipping. 24. Tackling player out of bounds, or running into player obviously out of play. 25. Coaching from sidelines. 26. Failure to stop one full second following shift. 27. Defensive holding. 28. Invalid Signal for Fair Catch. |
|---|--|

OTHER PENALTIES

- | | |
|--|--|
| <ol style="list-style-type: none"> 29. Striking an opponent with fist, forearm, elbow or locked hands, kicking or kneeling — Mandatory disqualification of offending player plus loss of fifteen yards. 30. Foul within the one yard line — half the distance to the goal. 31. Interference by defensive team on forward pass — passing team's ball at spot of foul and first down. 32. Forward pass being touched by ineligible receiver beyond | <p>the line of scrimmage — loss of fifteen yards from spot of preceding down and loss of a down.</p> <ol style="list-style-type: none"> 33. Illegal touching of kicked ball within opponent's ten yard line — touchback. 34. Flagrantly rough play or unsportsmanlike conduct — Mandatory disqualification plus loss of fifteen yards. 35. Eligible pass receiver who goes out of bounds and later touches a forward pass—loss of down. |
|--|--|

SEE PAGE 17 FOR OFFICIAL SIGNALS

HOUSTON COCA-COLA BOTTLING COMPANY ★ 2800 BISSONNET

QUINBY EMPLOYMENT SERVICE

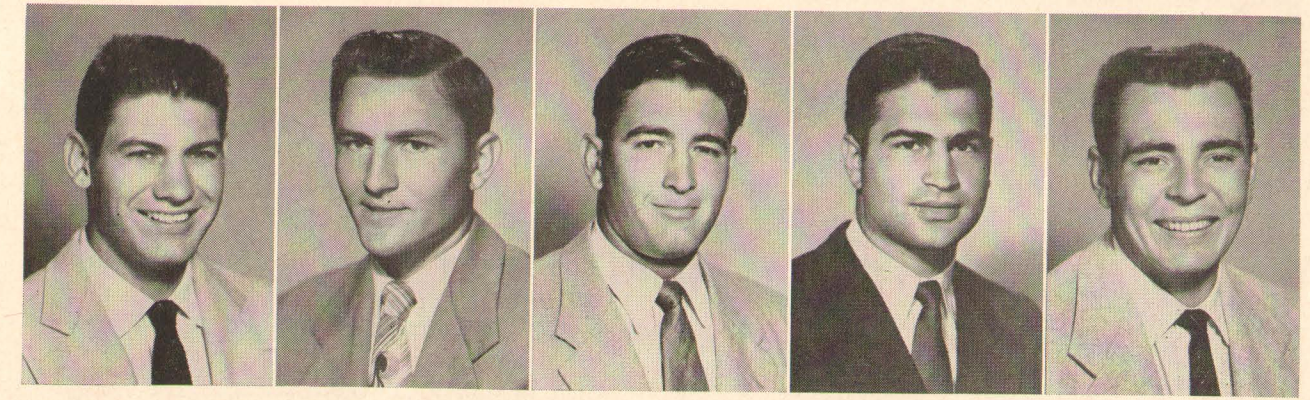
"A Name Worth Remembering"

You can benefit from our many years experience in the personnel field Executive, Office, Sales, and Technical Personnel

Member National Employment Board, Chamber of Commerce and National Association Personnel Consultants

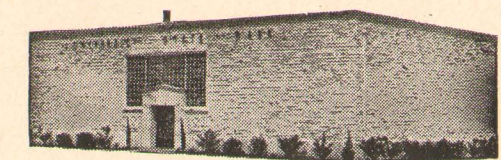
409 Bankers Mortgage Building

Houston 2, Texas



54—Don Wilson 55—Leo Rucka 56—Carmon Stewart 60—Kenneth Paul 61—Eddie Rayburn

(SEE THUMBNAIL SKETCHES ON PAGES 30 AND 31)



COMPLETE METROPOLITAN SERVICE

WITH RESIDENTIAL CONVENIENCE



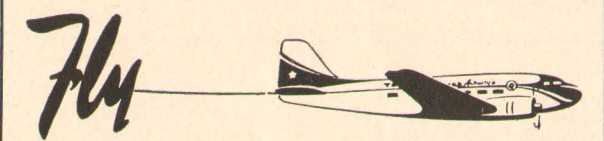
Serving Southwest Houston, West University Place and Southside Place

AUTO TELLER SERVICE

UNIVERSITY STATE BANK

Keystone 5574

6135 KIRBY DRIVE at AMHERST



Fly 26-Seat DC-3 "Super Starliners" to Southwest Conference Games!

for Information or Reservations

CALL TRANS-TEXAS OR YOUR LOCAL TRAVEL AGENT

Now serving ARKANSAS, TEXAS LOUISIANA and TENNESSEE



"The Official Watch for Timing this Game is Longines . . . The World's Most Honored Watch"

Rice Band, Yell Leaders Provide Color for Grid Games

"Unsung heroes" of many a football game are the members of the student band and yell leaders. The music of the band and the organized cheering of the student section helps arouse the enthusiasm of the fans and, in turn, that enthusiasm is transmitted to the players.

While the game commands the greatest attention, to many spectators the stirring music of the bands and the halftime performances provide a good part of the entertainment.

At Rice Institute, the band is under the direction of M. H. McNeely. There are approximately 70 members of the organization. These men—and the drum majorettes—put in about ten hours a week rehearsing for their music and marching activities.

Key members of the band are Bob Eggleston, the president, and drum major George Beck. The majorettes are Virginia Easley, Barbara Simons, Marilyn Webb, and Maurine Bell.

The yell leaders, who are elected by the Rice student body in spring campus elections, are headed by Bill Harrison. His worthy aides are Sander Frindell, John Gibbs, Carolyn Thomas, and the popular "TV Twins" of Rice—Joan and Jane Ryba.

For the fans who would like to sing along with the students, here are the words to the Rice alma mater and fight song:

Rice Songs

RICE'S HONOR

All for Rice's honor, we will fight on.
We will be fighting when this day is done;
And, when the dawn comes breaking,
We'll be fighting on, Rice,
For the Gray and Blue. We will be loyal
To Rice be true.

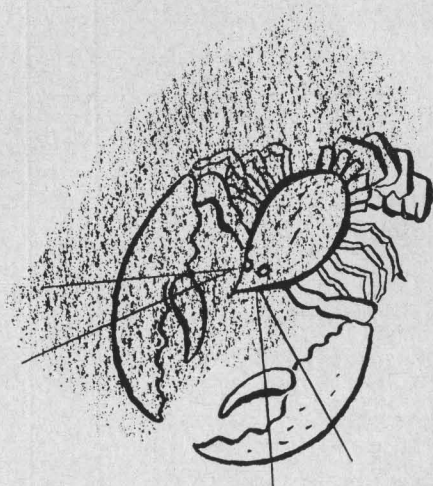
GRAY BONNET

Put on your old gray bonnet, with the blue
ribbon on it,
And we'll hitch Old Sammy to the fray,
And we'll rock, rock, rock 'em
And we'll sock, sock, sock 'em,
To the end of Judgment Day.

FIGHT SONG

Fight for Rice; Rice, fight on; Loyal sons, arise!
The Blue and Gray, of Rice today
Comes breaking through the skies.
Stand and cheer! Victory's near!
Sammy leads the way.
Onward go, to crush the foe.
We'll fight for the Blue and Gray.
Rice... Fight... never dies.
Blue... Gray... in the Skies
Stand... Cheer Rah, Rah, Rah.
Go... Go... Yeaaaaa Rice!

Roland Busch's

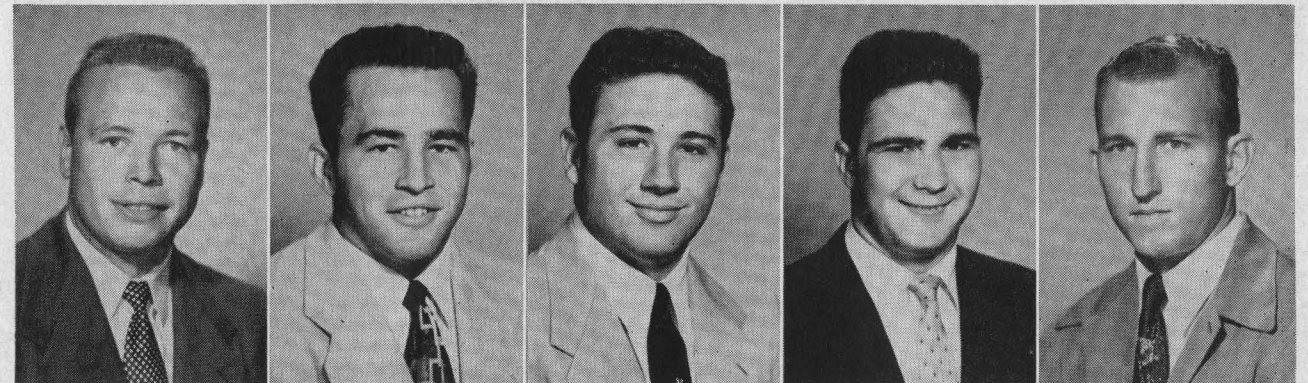
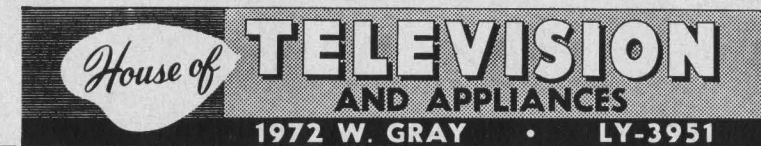


the famous seafood and lobster
house • 8419 so. main • mo. 5-2703

A Sure Winner For Your Football Pleasure

DU MONT TELEVISION

COME IN AND MEET W. A. "BILL" GALBREATH CLASS OF '23



62—LaMar "Skip" Lee

63—Lew Harpold

64—Tommy Siragusa

66—Everard Terrell

67—W. C. Treadway

(SEE THUMBNAIL SKETCHES ON PAGES 30 AND 31)

Rice Freshman Football

A Friday night game on November 13th with the Texas A. & M. "Fish" at Rice Stadium highlights the home schedule of the 1953 Rice freshman grid squad. The proceeds from the game, which will be part of Homecoming activities, will go to the fund for maintenance of the Holly Hall Home for the Aged.

Freshman coach Charlie Moore and aide Harold Stockbridge will handle the squad of potential Owl varsity stars of the mid-fifties.

Here is the Owllet schedule for this fall:

- Oct. 2 (8:00) Allen Academy
in Houston
- Oct. 16 (2:00) S.M.U. Freshmen
in Dallas
- Oct. 23 (2:00) Texas Freshmen
in Austin
- Nov. 13 (8:00) Texas A. & M. Freshmen
in Houston
- Nov. 19 (2:00) Baylor Freshmen
in Waco

AT LUNCH OR DINNER

You can always enjoy a delicious meal in the
Warwick's Famous Crystal Dining Room

A PLEASURE TO SERVE YOU



R. T. CULLATHER, Manager

WARWICK HOTEL

AND APARTMENTS

Houston 1, Texas

The Rice Athletic Association Would Appreciate Your Patronizing Our Advertisers

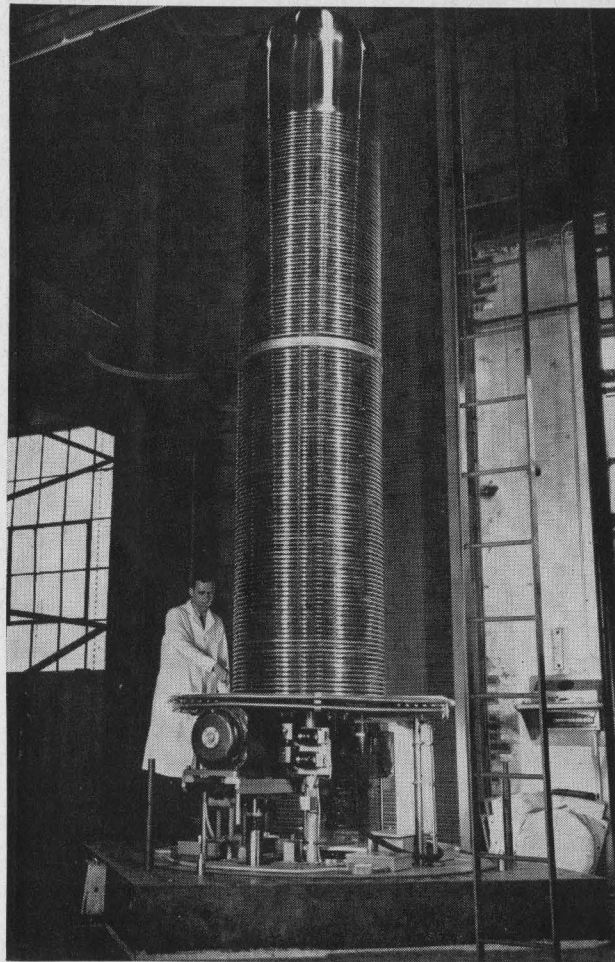
FACTS ABOUT RICE

Founded by Houston philanthropist, the late William Marsh Rice, who provided the original endowment and set for the objectives—a non-sectarian institute for the advancement of literature, science, art, philosophy, and letters, and for cultivating other means of instruction.

The school was established under a charter issued by the State of Texas on May 16, 1891. However, the first classes were not held until 1912 upon completion of the building program and finish of a thorough study of other educational institutions so as to provide an outstanding curriculum.

Rice has a limited enrollment of approximately 1,600 students who must meet high entrance requirements. This provides for a low student-instructor ratio and a maximum of individual attention for the students.

There is no tuition charged at Rice, only laboratory fees where necessary. This provides the ad-



Five-Million-Volt Van de Graaff Vertical Positive-Ion Accelerator

vantage of an outstanding advanced education with the finest in facilities at a minimum expense for those admitted.

Rice Institute is a private institution, financed by endowments and investments.

The large and picturesque campus, about seven miles from the downtown section of Houston, is in the heart of the fast growing southwest sector of new commercial locations and fashionable residences. The campus comprises about 300 acres.

While the enrollment is held down to Rice in line with the low student-instructor ratio previously mentioned, the Institute has had considerable expansion of the physical plant and the curriculum through the years.

Most recent addition is the laboratory housing the \$500,000 Van de Graaff machine for research in atomic energy, which has been awarded Rice by the Atomic Energy Commission on a permanent loan for experimental purposes. The building was completed and dedicated only last spring, and the research program is now under way, directed by Dr. T. W. Bonner of the Rice faculty, who is recognized as one of the world's foremost atomic physicists.

Other major additions to the campus since World War II include one of the nation's outstanding libraries, the finely appointed Fondren Library of a quarter of a million volumes (and completely air conditioned for visitors' comfort) . . . also new on the campus is the M. D. Anderson class room and faculty offices building . . . the Abercrombie Engineering Laboratory . . . and Wiess Hall, a modern dormitory for two hundred men students.

Still to come is a new school of geology, which is now being established with classes tentatively slated to begin in 1954. It is to be financed through approximately \$1,500,000 in a generous gift of Humble Oil & Refining Company stock given the Institute by Mrs. Harry Carothers Wiess, widow of the late Mr. Wiess, who was a member of the school's Board of Trustees.

Known throughout the world as an educational institute of the highest standing, much of the credit for this reputation goes to the educators, who are headed by the school president, Dr. William V. Houston. This famed atomic physicist, who still does teaching and research in addition to his administrative duties as school president, came to Rice in 1947—after twenty years on the faculty of the California Institute of Technology—to succeed the beloved Dr. Edgar Odell Lovett upon the latter's retirement to the position of President Emeritus. Dr. Lovett, who played a major role in the establishment of the Institute, was the first president and served in that capacity for 35 years.

☆ *The Southwest's
Finest . . .
and reasonable, too!*

WELDON Cafeteria
4916 South Main

- Open Daily—11:00 a.m. through 8:30 p.m.
- Two Free Parking Lots Adjoining

South End Building Materials Co.

READY MIX CONCRETE

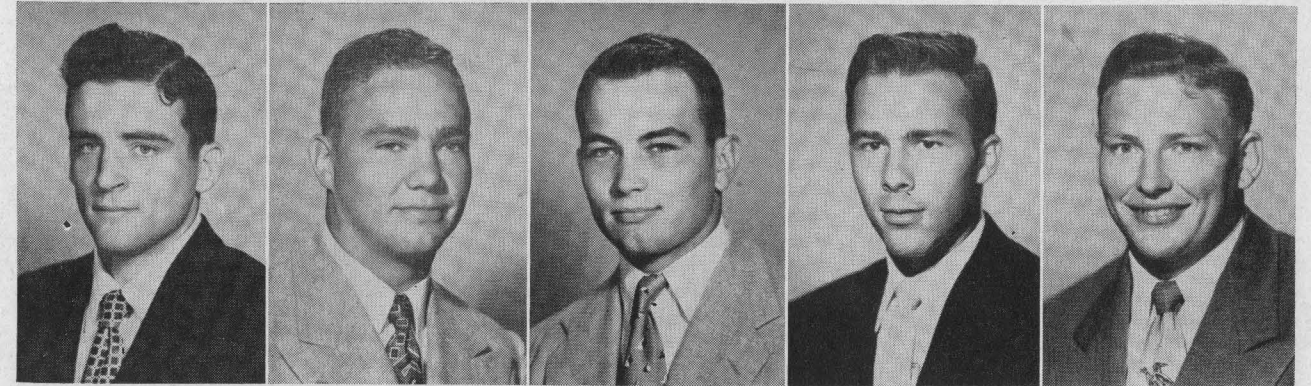
SAND — GRAVEL — CEMENT

South Houston Plant
5102 Galveston Road
Phone MI-3328

Post Oak Road Plant
Gassmer Drive
Phone MA-8379

Deer Park Plant
Deer Park, Texas
Phone GR-9-2251

Kirby Drive Plant
4830 Kirby Drive
Phone LY-9131



68—Steve Tully

70—John Hudson

71—Orville Trask

72—Max Schuebel

73—LaVon Cox

(SEE THUMBNAIL SKETCHES ON PAGES 30 AND 31)

Enjoy the game more with a

foremost
TRIPLE GOODNESS
ICE CREAM BAR

SERVED THROUGHOUT THE STADIUM

HOUSTON'S FOREMOST DAIRIES

1705 WASHINGTON AVENUE

Central 9406

Represented for National Advertising by DON SPENCER COMPANY, INC., 271 Madison Ave., New York 16, N.Y.

**1953 RICE
TRI-CAPTAINS
AND COACH**

Here are the Owl leaders for this fall, Coach JESS NEELY pictured with the tri-captains who were elected by their teammates last spring. Left to right, RICHARD CHAPMAN, tackle from Waxahachie; LEO RUCKA, center from Crosby; JOHN HUDSON, guard from Center. All are seniors.



Medical and Training Care of Rice Athletes



Sorsby

Dr. Brannon

Dr. Smith

Dr. Welsh

Trainer Wojceki



Loeser

An important part of any athletic program is the prevention of serious injuries in contact sports by the use of proper training methods and modern equipment. At Rice, such a program is under the immediate supervision of head athletic trainer Eddie Wojceki, member of the 1952 U. S. Olympic training staff and recognized as a leader in his field.

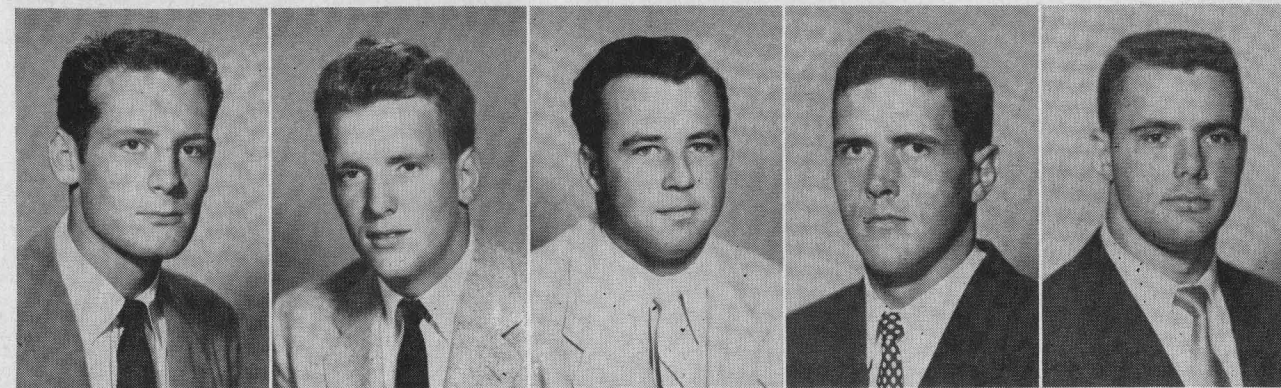
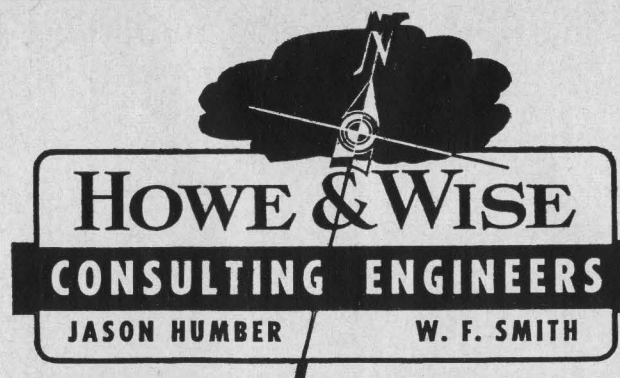
In the event injuries do occur that require the attention of physicians, Rice is fortunate to have available the services of the team

physician for many years, Dr. Hugh Welsh, and as special consultants Dr. Jack Brannon and Dr. Edward T. Smith.

Attending to duties in the sizable athletic equipment room is veteran Rice employe, J. R. Sorsby. Assisting Wojceki in the training room and in the considerable "behind the scenes" detail work is student assistant trainer Louis Loeser, and undergraduate managers John Wolda and Bill Davis.

Jason Humber
Class of '22

W. F. Smith
Class of '26



75—Layton Golemon 76—Harris Moore 77—Jay Riviere 78—Richard Chapman 80—Dan Hart

(SEE THUMBNAIL SKETCHES ON PAGES 30 AND 31)

Complete Insurance Coverage

American General Group

American General Investment Corporation

American General Life Insurance Company

American General Insurance Company

RUSK BUILDING

HOUSTON, TEXAS

The Rice Athletic Association Would Appreciate Your Patronizing Our Advertisers

1953 RICE INSTITUTE OWLS VARSITY FOOTBALL ROSTER

No.	Name	Pos.	Wt.	Ht.	Age	Class	Exp.	Home Town
10	Sammie Burk	RH	190	6-0	21	Junior	1 VL	Luling
11	Horton Nesrsta	LH	147	5-9	22	Senior	2 VL	San Antonio
14	Mendel Laviage	LH	180	5-7	19	Soph.	FL	Houston
15	John Zimmerman	QB	167	6-0	19	Soph.	FL	Cuero
19	Bob Garbrecht	FB	200	6-1	20	Soph.	1 VL	New York City, N. Y.
21	Atchley Proctor	QB	170	6-0	19	Junior	1 Sq.	DeKalb
23	John "Pinky" Nisbet	QB	185	6-1	20	Soph.	FL	Houston
25	Buddy Grantham	QB	178	6-3	20	Senior	2 Sq.	Grand Prairie
26	Leroy Fenstemaker	QB	195	6-2	21	Senior	1 VL	Llano
31	Morris Stone	RH	167	5-9	20	Junior	1 VL	Kerrville
32	Bill Gaskamp	RH	170	5-11	21	Junior	1 Sq.	Brenham
35	Bill Keller	FB	196	5-11	19	Soph.	FL	Waco
36	Gordon Kellogg	RH	171	5-10	20	Junior	1 VL	Baytown
39	Steve Curry	RH	180	5-11	20	Soph.	FL	Donna
40	Mac Taylor	LH	180	5-10	20	Soph.	1 Sq.	Lubbock
41	John Faseler	RH	191	6-0	20	Soph.	FL	Hondo
42	Don Whittaker	FB	192	6-1	21	Senior	1 VL	Dallas
43	Carl Johnson	RH	177	6-0	20	Senior	1 VL	Houston
44	Jerry Hall	FB	207	6-1	20	Soph.	FL	Palestine
45	David "Kosse" Johnson	FB	178	6-0	21	Senior	2 VL	Baytown
47	Dicky Moegle	LH	167	6-0	19	Junior	1 Sq.	Taylor
48	Page Rogers	RH	190	6-0	20	Soph.	FL	Houston
49	Gino Biasatti	FB	187	5-10	21	Senior	2 Sq.	Dallas
50	Bill Purvis	LG	215	5-11	19	Soph.	FL	Waco
54	Don Wilson	C	210	6-3	19	Soph.	FL	Houston
55	Leo Rucka	C	204	6-3	22	Senior	2 VL	Crosby
56	Carmon Stewart	C	202	6-2	20	Junior	1 Sq.	Palestine
59	Larry Lundstedt	C	188	5-11	20	Junior	1 Sq.	Austin

1953 BAYLOR UNIVERSITY NUMERICAL ROSTER

No.	Name	Position	Height	Weight	Class	Hometown
14	Billy Hooper	QB	5-11	175	Junior	Sweetwater
18	Frank Peschel	QB	6-2	196	Junior	Granger
19	C. Davidson	QB	6-1	177	Senior	Gatesville
23	Charles Jones	HB	5-10	168	Senior	Gatesville
24	H. Talamantez	HB	5-10	167	Sophomore	Bracketville
29	Tom Anderson	HB	5-8	172	Sophomore	St. Louis, Missouri
30	Weldon Holley	FB	6-0	183	Sophomore	Odessa
31	Wallace Talbert	FB	6-3	208	Junior	Fort Worth
33	Charles Cowley	HB	6-2	188	Junior	Freer
34	Charles Dupre	FB	6-0	190	Sophomore	Texas City
37	Allen Jones	FB	6-0	193	Junior	Clyde
40	Billy Sherman	HB	6-1	185	Senior	Fort Worth
42	Mickey Sullivan	HB	6-0	182	Senior	Houston
44	Jerry Coody	HB	5-11	177	Senior	Tulsa, Oklahoma
47	L. G. Dupre	HB	5-11	176	Junior	Texas City
50	Bill Barnard	C	6-2½	210	Senior	Little Rock, Arkansas
51	Clint Chambers	C	5-10	185	Senior	Chickasha, Oklahoma
52	Jim Taylor	C	6-3½	220	Sophomore	Clyde
53	Charles Radford	G	5-9	188	Senior	Quanah
54	James Jackson	G	5-11	191	Sophomore	McKinney
55	B. C. Harris	C	6-2	212	Sophomore	Pittsburg
56	Bob Hilton	C	6-1½	200	Sophomore	Fort Worth
57	Eugene Liston	FB	6-1	200	Sophomore	Marshall
60	Gene Renfro	G	6-0	205	Junior	Littlefield

Campus Cleaners

COLD STORAGE AND FURRIERS

KEystone 7403

6117 KIRBY DRIVE

HOUSTON 5, TEXAS

The South's Largest and Most Modern Fur Storage Vault

Campus Cleaners

COLD STORAGE AND FURRIERS

KEystone 7403

6117 KIRBY DRIVE

HOUSTON 5, TEXAS

The South's Largest and Most Modern Fur Storage Vault

60	Kenneth Paul	RG	195	5-11	20	Junior	1 VL	Houston
61	Eddie Rayburn	RG	220	6-2	19	Soph.	FL	Houston
62	LaMar "Skip" Lee	RG	205	6-0	21	Senior	1 VL	Huntsville
63	Lew Harpold	RG	198	5-10	20	Soph.	1 Sq.	Houston
64	Tommy Siragusa	RG	195	5-11	20	Soph.	FL	Houston
65	Jack Davis	LG	200	6-0	21	Soph.	FL	Palestine
66	Everard Terrell	LG	190	5-11	20	Soph.	1 Sq.	Wichita Falls
67	W. C. Treadway	LG	200	6-1	21	Senior	2 VL	Houston
68	Steve Tully	RG	200	5-11	19	Soph.	FL	Houston
70	John Hudson	LG	212	6-0	20	Senior	2 VL	Center
71	Orville Trask	RT	230	6-2	18	Soph.	FL	Houston
72	Max Schuebel	LT	210	6-2	21	Senior	2 VL	Houston
73	LaVon Cox	RT	235	6-2	20	Junior	1 Sq.	Galena Park
74	Bud Trenholm	LT	205	6-1	19	Soph.	FL	Irving
75	Layton Golemon	RT	230	6-4	19	Junior	1 VL	Kerrville
76	Harris Moore	LT	205	6-3	19	Soph.	FL	Houston
77	Jay Riviere	RT	200	6-0	20	Soph.	1 Sq.	Houston
78	Richard Chapman	LT	225	6-6	20	Senior	2 VL	Waxahachie
80	Dan Hart	LE	195	5-10	21	Senior	2 VL	Houston
81	Bob Woolbright	RE	195	6-2	19	Soph.	None	San Benito
82	R. E. Wortham	RE	185	5-11	20	Junior	1 Sq.	Klein
84	Marshall Crawford	RE	184	6-2	19	Soph.	FL	Lamesa
85	Don Costa	RE	194	6-0	20	Junior	1 Sq.	Houston
86	Jack Roady	LE	182	6-2	19	Soph.	FL	San Marcos
87	Robert Harrison	LE	180	6-0	19	Soph.	FL	Houston
88	Sammy Ward	LE	190	6-0	21	Senior	1 FL	Laredo
89	Blois Bridges	RE	187	6-1	21	Senior	1 VL	Grand Prairie
90	Lamoine Holland	LE	180	6-2	20	Junior	1 Sq.	San Antonio
91	Norman Kothman	RE	190	6-0	19	Soph.	FL	Menard

62	H. Rutherford	G	6-0	208	Sophomore	Waco
63	Wayne Lucky	G	6-1	195	Sophomore	Temple
64	L. Forderhase	C	6-0	208	Junior	Plainview
65	W. Culvahouse	G	5-11	183	Junior	Kermit
66	Pete Erben	G	6-0½	210	Senior	San Antonio
67	Buddy Card	G	6-2	206	Junior	Pecos
68	C. Dierking	G	6-0	205	Junior	Brenham
69	Russell Barnett	G	5-10½	210	Junior	Gladewater
70	James R. Smith	T	6-3	215	Junior	West Columbia
71	Bill Green	T	6-2	214	Sophomore	Temple
72	Keith Clark	T	6-1	192	Junior	Kermit
73	Bill Lucky	G	6-3	230	Senior	Temple
75	Robert Knowles	T	6-4	232	Senior	Waco
76	Eugene Lee	T	6-0	200	Sophomore	Eden
77	Joe Robinson	T	6-3	212	Junior	Goodlettsville, Tenn.
78	Clyde Letbetter	T	6-2	218	Sophomore	Conroe
79	Dub Richie	T	6-2	205	Junior	Cleburne
80	Excell Amyett	E	6-2	190	Sophomore	Fort Worth
81	Charles Smith	E	6-1	186	Junior	Mt. Pleasant
82	Ronnie Black	E	6-3	200	Senior	Corpus Christi
83	Toby Davis	E	6-1½	193	Sophomore	Gladewater
84	Wayne Hopkins	E	6-1½	187	Senior	Houston
85	H. Gremminger	E	6-1	186	Sophomore	Weatherford
86	Charles Bristow	E	6-2	192	Senior	Corsicana
88	Jim Miller	E	6-3	200	Sophomore	Lincoln, Nebraska
89	Dickie Murray	E	6-0	181	Senior	Shreveport, Louisiana
90	Jack Reid	QB	6-3	194	Senior	Houston
91	J. Wentworth	E	6-1	185	Senior	Fort Worth

"The Official Watch for Timing this Game is Longines . . . The World's Most Honored Watch"

"The Official Watch for Timing this Game is Longines . . . The World's Most Honored Watch"

THUMBNAIL SKETCHES OF RICE VARSITY PLAYERS OF 1953

(For statistical data, such as weight, height, home town, etc., see the roster on page 28)

(10) **SAMMIE BURK**—Rice's first service returnee of Korean War period... Sam was teletype operator for Air Force in California, also played on strong Hamilton Field grid team last fall... lettered as a soph in '50 at 175 pounds... now weighs 190... was called in as a reserve airman after '51 opener, so will be eligible for all but this year's debut with Florida.

(11) **HORTON NESRSTA**—The fans' favorite... popular with teammates and all who meet the scrappy "little rascal"... Nation's leader in punt returns last fall with 536 yards in 44 returns as safetyman, including two 60-yard-plus TD sprints... only weighs 147, but one of the best backs in Southwest.

(14) **MENDEL LAVIAGE**—Lack of height handicaps this stocky halfback (5-7) on defense, but he's a whiz as a runner... captured the fancy of the fans in spring game with his darting runs... local boy from San Jacinto High.

(15) **JOHN ZIMMERMAN**—Quarterback candidate from Cuero, handicapped a bit by lack of size, but eager for game duty... brilliant student, he made the Dean's List of Superior Students in the spring... excellent tennis player, will strive for a spot on net squad.

(19) **BOB GARBRECHT**—A teammate says Big Bob runs like a "wild-eyed bull"... a strong, fast runner this fellow could be a terror in platoon ball, but needs to improve on defense... he's the only non-Texas on the squad... home is New York City, but plans to live in Texas after he graduates.

(21) **ATCHLEY PROCTOR**—Best runner of the quarterbacks, and a sharp passer... threw a TD pass to Jack Day on first toss of varsity career last fall in TCU game... unusual first name is his mother's maiden name... he was an "unknown" in high school at tiny Class B DeKalb in East Texas where Cecil Grigg "discovered" him.

(23) **JOHN NISBET**—Known to one and all as "Pinky", he's the "personality kid" of the club... quick with the wisecracks to keep the boys loose... and a very competent quarterback... a Reagan ex, he lettered as utility man in baseball last spring.

(25) **BUDDY GRANTHAM**—The slender QB from Grand Prairie has been dogged by injuries much of varsity career... took a whirl at defensive half last fall, in addition to quarterback... teamed with end Blois Bridges to give Grand Prairie a fine passing team in 1949... Pleasant personality served him well as car salesman in his home town last summer.

(26) **LEROY FENSTEMAKER**—A key man in Rice grid picture as quarterback who directs the offense... adapted well to defense in spring... did a fine job replacing injured Dan Drake at mid-season last fall, and directed attack in Owls' "home stretch" drive for second place... was a boys' camp counsellor in the summer... probably can throw the ball farther than anyone in Southwest.

(31) **MORRIS STONE**—Rugged little battler from the Hill Country... had 246 minutes playing time as a soph... one of several fine halfbacks on the squad... a bit short for defense, but plays capably... played in all-star game in high school.

(32) **BILL GASKAMP**—A gifted runner with that natural ability to suddenly change pace... excellent speed... was dangerous punt returner in high school, so should do all right at safety... made a delayed debut as varsity player this fall... was a frosh star in '50, but went to Blinn Jr. College in home town Brenham in '51, required to lay out in '52 to regain eligibility at Rice.

(35) **BILL KELLER**—Hard running fullback who was all-state at LaVega High (Waco)... a soph, he figures to improve with experience... strong enough to be a linebacker, as fullbacks now must be under "two way football".

(36) **GORDON KELLOGG**—A defensive halfback regular in '52, he's one of several fine halfbacks on the squad... played offense in high school at always-strong Baytown... quiet, business-like, and well-mannered collegian.

(39) **STEVE CURRY**—"The Bull", not to be confused with a wrestler by the same name, hails from "north of the border down Mexico way" at Donna, Texas... hard runner and showed promise with frosh club last fall.

(40) **MAC TAYLOR**—State's top ground gainer as an all-state back with champion Lubbock High in '50, he's prolific with the yardage when he carries the ball... ineligible last fall because of grades, he bounced back to make all 2's and 3's last year and now is one of squad's better students... can play either left half or fullback, and hits hard as linebacker... first name is Mac NOT Mack.

(41) **JOHN FASELER**—Perhaps Rice's best all-around athlete, he was a starter in football, basketball, and baseball with the freshman teams last year... has good speed, and at 190 hits with power as a halfback.

(42) **DON WHITTAKER**—Strictly a linebacker last fall, and a good one, he's having to adapt to intricacies of offensive play this year... regretful Don's a senior as his time is short to develop into an all-around fullback... a hard tackler.

(43) **CARL JOHNSON**—One of the squad's fastest men, he's a two-year letterman track sprinter... played mostly on offense as a soph, even started one game, but last year his defensive halfback play late in season was important factor in team's success in November... was a star at San Jacinto in high school.

(44) **JERRY HALL**—Potentially was one of the finest running backs anywhere... tremendous speed (was second in 100-yard-dash in high school state meet) despite his size, 205 to 210 pounds... has a long way to go in learning defensive play as he missed all of spring drills because of an ankle injury... a fine punter, the Palestine all-stater gets the ball away unusually quick.

(45) **DAVID JOHNSON**—Nickname of "Kosse" comes from his birthplace... an all-around player, the former Baytown star was fourth leading ground gainer in SWC in '52, despite missing some action because of injuries... he's been the regular punter for two seasons... is a good linebacker... made most all-SWC second teams last year... one of the married men on the squad.

(47) **DICKY MOEGLE**—The kid from Taylor didn't turn 19 until after fall workouts began, although he's already had one varsity season of play... a good, all-around halfback, he's got running ability, good pass catcher, and able defensive player.

(48) **PAGE ROGERS**—One of several former Lamar High players on the Rice varsity... was a defensive standout with the frosh... served as Owl waterboy in late thirties.

(49) **GINO BIASATTI**—Two-year squadman from Dallas' Jesuit High, Gino is a hard runner who is working hard to learn defense in his senior year... injuries were his bugaboo as a soph and junior.

(50) **BILL PURVIS**—Big soph from LaVega has the size... needs work to improve speed... should continue to develop as he acquires experience.

(54) **DON WILSON**—Big, rugged center inherits the number made famous by the Owls' star linebacker, Don Rhoden, now graduated... all-stater Wilson from San Jacinto is recognized as one of SWC's best soph prospects for future stardom... weighed 230 as a freshman, Marine Platoon Leaders' summer training dropped him to 200, and he figures to play at about 215.

(55) **LEO RUCKA**—Rice fans contend Leo is the best center in Southwest... two years as a starting linebacker and some offensive service qualify him as a top notch player... one of the team tri-captains... the quiet type, he usually has little to say, but his action speaks louder than words on the field.

(56) **CARMON STEWART**—A husky young man from Palestine, Carmon was on the squad but didn't get in any games last fall... should see some duty as a reserve center this fall.

(59) **LARRY LUNDSTEDT**—Scrappy little guy from Austin switched from guard to center in the spring and was pretty impressive... he's quick, hits hard... needs a lot of work learning difficult new chore of linebacking on defense.

(60) **KENNY PAUL**—One of the top linemen in SWC last year as a soph, he bids for all-SWC honors this fall... played both offense and defense in '52 at guard... a good leader, Kenny has tremendous competitive spirit... was a star on one of Lamar's best clubs.

(61) **EDDIE RAYBURN**—Still another standout from Lamar, big Eddie is rapidly developing into a fine guard as a soph... a bulky 240 as a freshman, Marine reserve training in the summer helped trim him to a hard 220... a fine all-around athlete, he was a starter on the frosh cage team and is one of Houston's best softball pitchers.

(62) **LAMAR LEE**—"Skip" went to high school in Minnesota and Indiana, but his folks now live in Huntsville, so he calls himself a Texan, especially since he married a Rice co-ed... a fullback as a freshman, he switched to guard, and lettered as a junior last year.

(63) **LEW HARPOLD**—A powerfully built Lamar ex who went to Del Mar Jr. College a year, this barrel chested youth is strong and loves the rough going... he furnishes good "insurance" at guard as a valuable reserve.

(64) **TOMMY SIRAGUSA**—An all-state player at Lamar in '51, he and Don Wilson played together in the high school all-star game... was a regular guard with Rice frosh... good prospect for future as he acquires experience behind current veteran guards.

(66) **EVERARD TERRELL**—A North Texan from Wichita Falls, he's bidding to move up in the ranks among the guards... He was a squadman last fall, but didn't play in any games.

(67) **W. C. TREADWAY**—Although one of several married men on the squad, Treadway is the only father... and he's plenty proud of baby Stephen—not yet a year old... another San Jacinto ex on the squad, W. C. has played a lot of defense as a two-year letterman.

(68) **STEVE TULLY**—Another of the San Jacinto delegation at Rice, he's perhaps a year away and needs more experience... but don't count this boy out... he's a battler who will get there if hustle will do the job.

(70) **JOHN HUDSON**—A tri-captain, two year regular defensive tackle, and one of the SWC's best linemen... a guard on offense, he'll switch positions with Dick Chapman on defense and again play tackle when the opponents have the ball... played high school ball at Center, but his parents now live in Houston.

(71) **ORVILLE TRASK**—The big boy from San Jacinto inherits all-SWC tackle Bill Crockett's number and position, right tackle... one of squad's biggest at 235, he's a promising soph who with junior Layton Golemon provides plenty of heft at that position... Marine training hardened him, but his weight loss was negligible.

(72) **MAX SCHUEBEL**—A two-year defensive tackle regular, this guy can pop those ball carriers with the best of 'em... a Reagan High ex, he provides experience, size, and strength to the tackle department.

(73) **LA VON COX**—Another big boy from Galena Park, he's shown considerable improvement since last fall... furnishes plenty of size at tackle with his 230 pounds... played in high school all-star game in '51... was a catcher on varsity baseball squad last spring, and his twin brother, LaDon, was a regular outfielder.

(74) **BUD TRENHOLM**—A tackle candidate from Irving, near Dallas... played quite a bit with the frosh last fall.

(75) **LAYTON GOLEMON**—Huge (6-4 and 226) junior tackle who was a starter on offense as a soph... hails from Kerrville, home of several former Rice grid stars... easy going nature vanishes when ref blows that whistle... should be one of SWC's better linemen.

(76) **HARRIS MOORE**—Ambitious, hard working young soph from Reagan... likes to mix it up in scrimmage... looks almost thin, but weighs 210.

(77) **JAY RIVIERE**—A teammate of Lew Harpold at Lamar and Del Mar, he switched from guard to tackle this fall... looking good in spring drills... a fine golfer, he'll be a mainstay on the links team in the spring.

(78) **RICHARD CHAPMAN**—Received considerable notice from nation's scribes in pre-season reports on potential stars of '53, based on his selection as all-SWC lineman in '52... a great defensive player, he should be adequate on offense... majors in atomic physics and now in advanced work as senior... was president of junior class... one of the squad's giants at 6-6 and 225... from Waxahachie.

(80) **DAN HART**—highly capable senior end with plenty of steady influence on the squad... was a guard as a soph, became a regular last fall as defensive end... one of the team's best conditioned men... cool and smart under pressure.

(81) **BOB WOOLBRIGHT**—a diamond in the rough... didn't even go out for frosh football, so woefully short of experience... but he has size and strength to be a fine end.

(82) **R. E. WORTHAM**—this lad could surprise a lot of folks... hobbled with a knee injury all last year, nobody knew much about him... a steady performer, he does a good job without attracting much attention... could be a big help with the scarcity of experienced ends.

(84) **MARSHALL CRAWFORD**—Very promising with the frosh last fall, this boy is a very rugged defensive end, capable enough on offense despite lack of real speed... he's a West Texan from Lamesa.

(85) **DON COSTA**—Switched from fullback to end at mid-season in '52 as a soph, saw brief game duty... provides size and strength at the position... one of the leading hitters on baseball team... went to St. Thomas High in Houston.

(86) **JACK ROADY**—Pulled a leg muscle while running to get in shape in late summer... could have challenged for a starting job were it not for injury if he could have played up to fine promise shown in spring drills... San Marcos boy... was a frosh starter in basketball, might help varsity in the cage sport.

(87) **ROBERT HARRISON**—Give this guy a little more heft and he'd make the club... good hustler, and hits very hard... switched from center to end last year.

(88) **SAMMY WARD**—One of three senior lettermen at ends who have to carry the load at important terminal posts... an all-stater at Laredo in high school, he's played some in two seasons, but still looking for that big year... an excellent artist, he aspires to a cartoonist career.

(89) **BLOIS BRIDGES**—A key man in the Rice grid picture... best pass catching end... offensive regular last fall after being sidelined with an injury most of soph season... has had no college experience as defensive end, but played it in high school at Grand Prairie.

(90) **LAMOINE HOLLAND**—Tall, quiet San Antonian with pretty good speed—he's a hurdler in track—and pass catching ability... if he can develop in blocking and tackling, he could help at end.

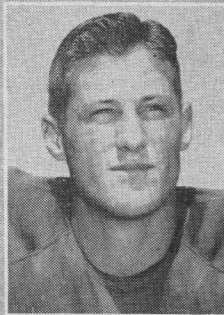
(91) **NORMAN KOTHMANN**—Husky soph from West Texas, Menard, he switched from guard to end in the spring... this is a year of learning in the new position, but he could help some in a pinch.

The Rice Athletic Association Would Appreciate Your Patronizing Our Advertisers

The Rice Athletic Association Would Appreciate Your Patronizing Our Advertisers



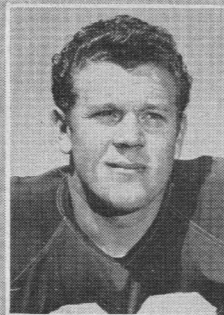
BILL GREEN



JIM TAYLOR



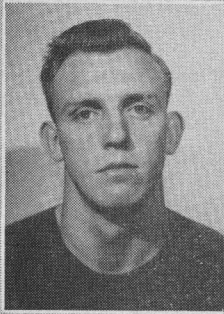
C. SMITH



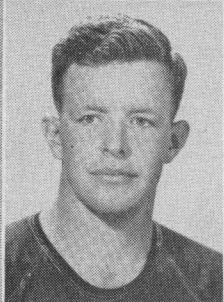
C. DIERKING



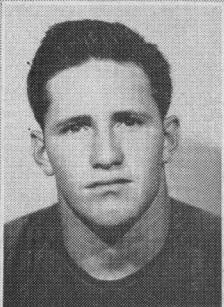
W. HOPKINS



BILL HOOPER



BILL LUCKY



A. JONES



W. TALBERT

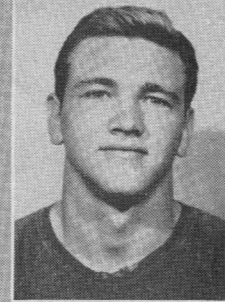


Halfback Don Carpenter catches pass as Baylor beats Washington State, 31-7, in 1952 game at Waco.

BAYLOR



J.R. SMITH



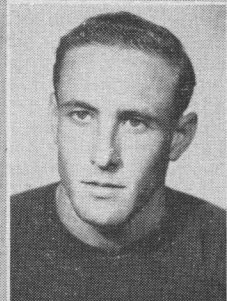
L.G. DUPRE



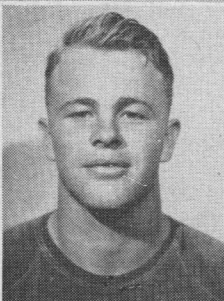
R. BARNETT



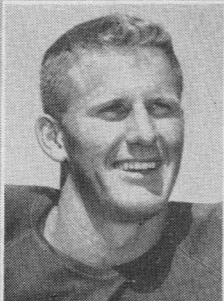
C. BRISTOW



F. DAVIDSON



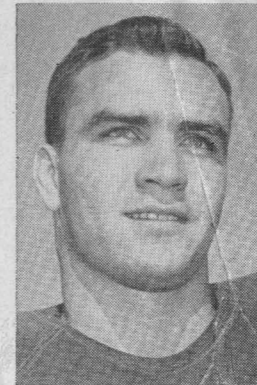
W. CULYHOUSE



W. HOLLEY



44—Jerry Coody



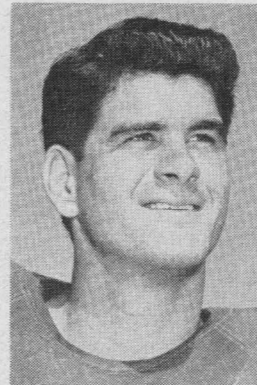
29—Tom Anderson



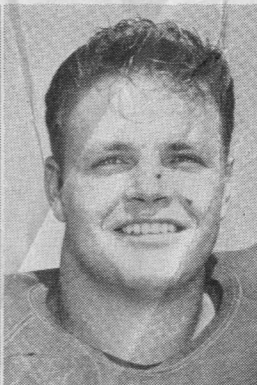
57—Eugene Liston



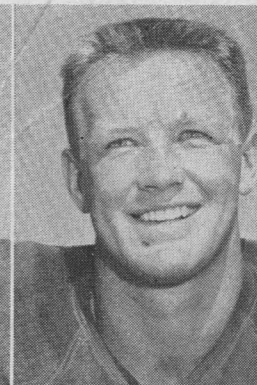
78—Clyde Letbetter



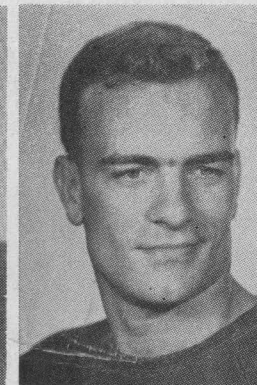
82—Ronnie Black



79—Dub Richie

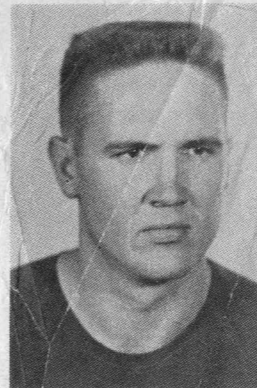


63—Wayne Lucky

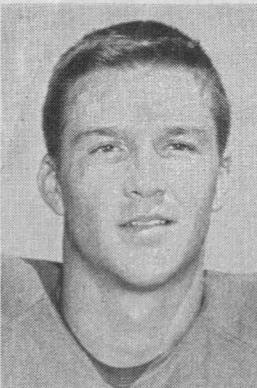


66—Pete Erben

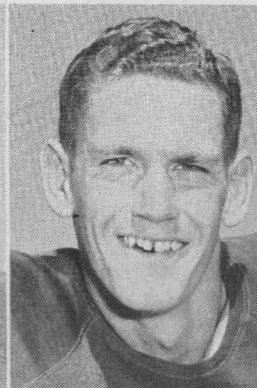
BAYLOR BEARS



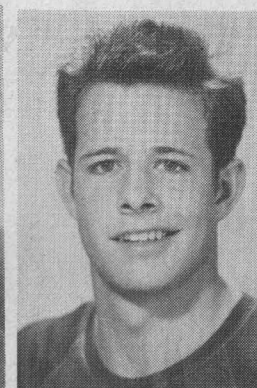
75—Robt. Knowles



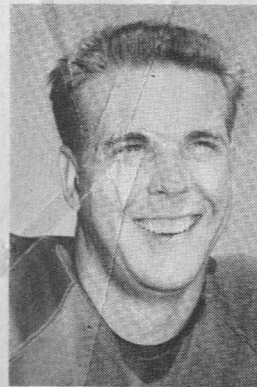
85—H. Gremminger



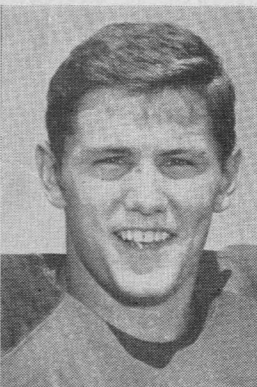
40—Billy Sherman



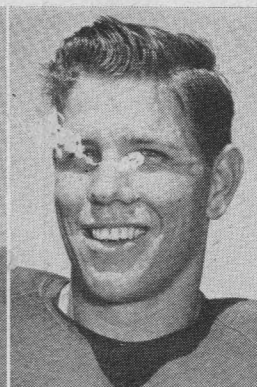
42—Mickey Sullivan



56—Bob Hilton



62—H. Rutherford



80—Excell Amyett



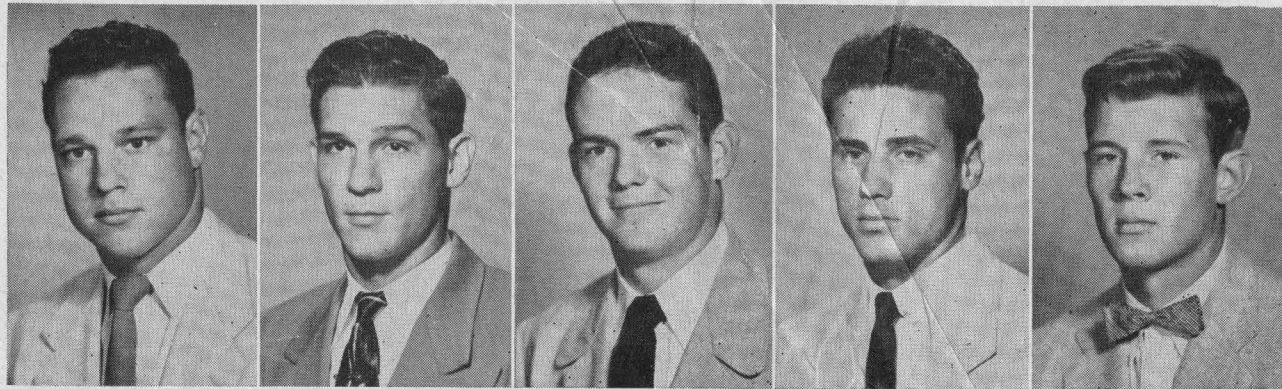
54—James Jackson

PEIDIEN IRON & STEEL CO.

ESTABLISHED 1890

WHOLESALE

HOUSTON, TEXAS



81—Bob Woolbright 82—R. E. Wortham 84—Marshall Crawford 85—Don Costa 86—Jack Roady

(SEE THUMBNAIL SKETCHES ON PAGES 30 AND 31)

RODEO CAFE

Dickinson, Texas

for . . .

Office Forms • Folders
Booklets • Color Printing
Letterpress and Offset
One-Time Carbon Forms
Continuous • Fanfold
Register Forms



THE REIN CO.

Victor 2611

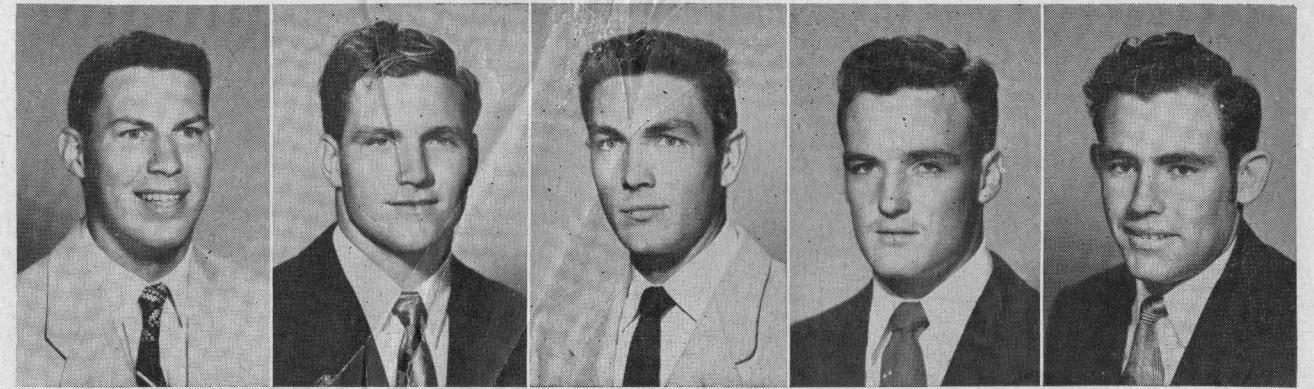
Represented for National Advertising by DON SPENCER COMPANY, INC., 271 Madison Ave., New York 16, N.Y.

Follow the Owl Cagers, 12 Home Games and S.W.C. Tourney Here

When the football season ends, Rice Institute sports fans will not lack for major college sports entertainment. The Owls are expected to field an outstanding basketball team that will play twelve games in the spacious and well-appointed Rice Gym. And a special winter feature sees Autry Court at the gym the site of the Southwest Conference tournament December 28-30 in which all seven SWC teams and the University of Alabama will appear, with a total of twelve college games in a three-day period. Information on tournament tickets may be obtained from the Rice athletic business office at the Rice Gym, phone KE-1661.

The Owls also will play 12 games on the road, including appearances in New York City, New Orleans, Knoxville, and Nashville with most of the games during the early part of Christmas holidays.

Cage coach Don Suman will build his squad with eight lettermen returning from the team that tied for second in the SWC last winter, with Gene Schwinger and Don Lance both unanimous all-Conference selections. Schwinger also received mention in several All-American squad listings as he led the SWC in scoring.



87—Robert Harrison 88—Sammy Ward 89—Blois Bridges 90—Lamcine Holland 91—Norman Kothman

(SEE THUMBNAIL SKETCHES ON PAGES 30 AND 31)

The "Fresh Up"
Family Drink!



You like it...
it likes you

BUY A CASE TODAY!

The Rice Athletic Association Would Appreciate Your Patronizing Our Advertisers

The Best FRIED CHICKEN in Town . . .

Famous throughout the Southwest for its tenderness and flavor. Fast service, low prices. Box orders to take out at no extra cost.

6441 SOUTH MAIN in HOUSTON



At the games it's . . .

**JASMINE FRANKS AND
HAM SANDWICHES**

(Always Government Inspected)

HOUSTON PACKING COMPANY • 3301 NAVIGATION • PReston 2361

Campus Scenes
OF THE RICE INSTITUTE



NAVY BUILDING



PHYSICS BUILDING



CHEMISTRY BUILDING

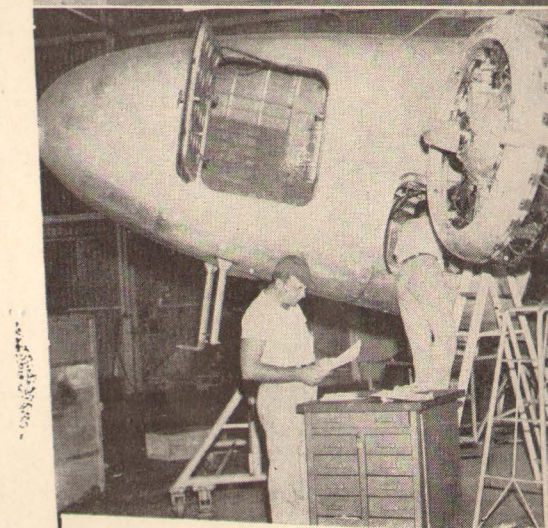
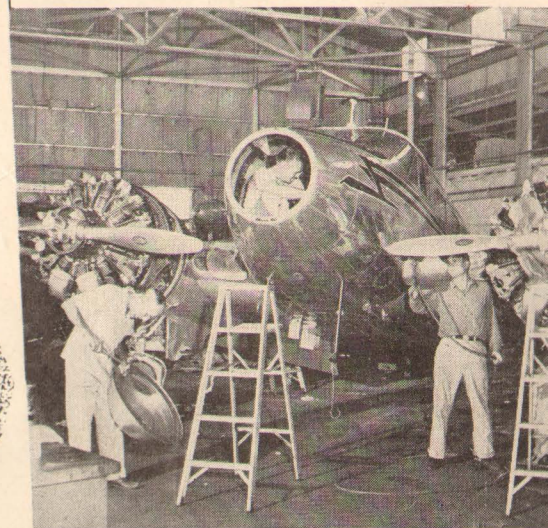
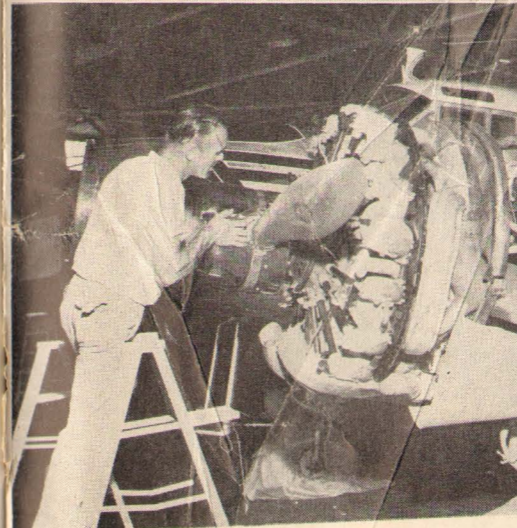


ACADEMIC COURT

Represented for National Advertising by DON SPENCER COMPANY, INC., 271 Madison Ave., New York 16, N.Y.

Name your problem

REED has the solution



LINE SERVICE

No time wasted here! When you roll up to the J. D. Reed Company ramp your service needs will receive immediate attention and you will be on your way in a flash.

MAJOR OVERHAULS

Experience counts! Our factory trained staff, using the finest and most complete equipment, is prepared to put your aircraft in like-new condition in minimum time and at reasonable cost.

PROPELLER and ENGINE SERVICE

The best is what you want! When propeller or engine service is needed make sure you are receiving the expert workmanship and technical know-how always available at the J. D. Reed Company.

EXECUTIVE CONVERSIONS

Designed for utility, engineered for performance by Reed! Our staff will custom design your executive conversion to best serve the requirements for which it is intended.

The extensive facilities of the J. D. Reed Company were developed to serve your every need in aviation. Over twenty years of service to owners of every type aircraft is your assurance that REED has the experience and facilities to cope with any aviation problem.

Our exacting standard and precise specifications have set a new high standard in workmanship and materials. We welcome your most complex problems and will find an economical solution. Next time you have a problem why not get the right answer from us?



MUNICIPAL AIRPORT
HOUSTON, TEXAS

CAMEL

America's most popular cigarette!



*So Mild -
So Flavorful!*