



# The KENTUCKY Game

RICE STADIUM ☆ 8 P.M. ☆ OCT. 31, 1953

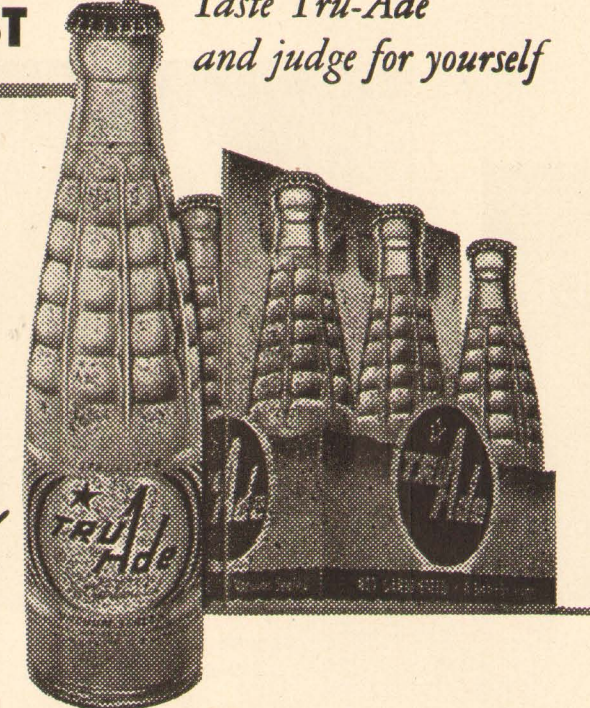
OFFICIAL PROGRAM – TWENTY FIVE CENTS





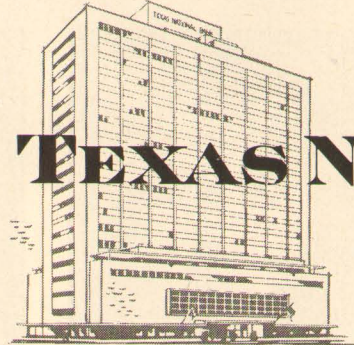
**ONLY ONE\*  
CAN BE  
BEST**

*\*Taste Tru-Ade  
and judge for yourself*



THE  
*Natural*  
SOFT DRINK

Our  
future  
banking  
home  
now  
under  
construction



**TEXAS NATIONAL BANK**  
A MERGER OF  
SOUTH TEXAS NATIONAL BANK AND UNION NATIONAL BANK  
MEMBER FEDERAL DEPOSIT INSURANCE CORPORATION  
CAPITAL AND SURPLUS \$10,000,000 • 213-220 MAIN

COMPLIMENTS  
OF  
**HERRIN TRANSPORTATION COMPANY**  
2300 WALKER  
FA-5111

Represented for National Advertising by DON SPENCER COMPANY, INC., 271 Madison Ave., New York 16, N.Y.

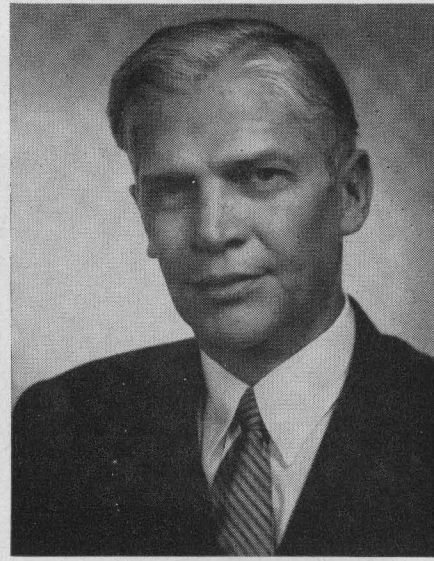


BOARD OF GOVERNORS OF THE RICE INSTITUTE

TRUSTEES



GUS S. WORTHAM



GEORGE R. BROWN  
Chairman



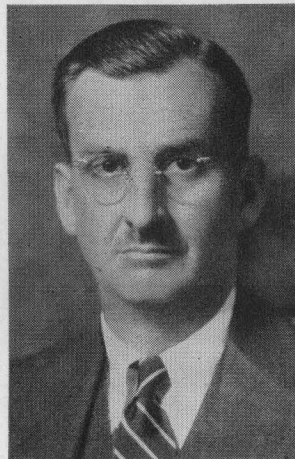
LAMAR FLEMING, JR.



WILLIAM A. KIRKLAND



J. NEWTON RAYZOR



DR. FREDERICK R. LUMMIS



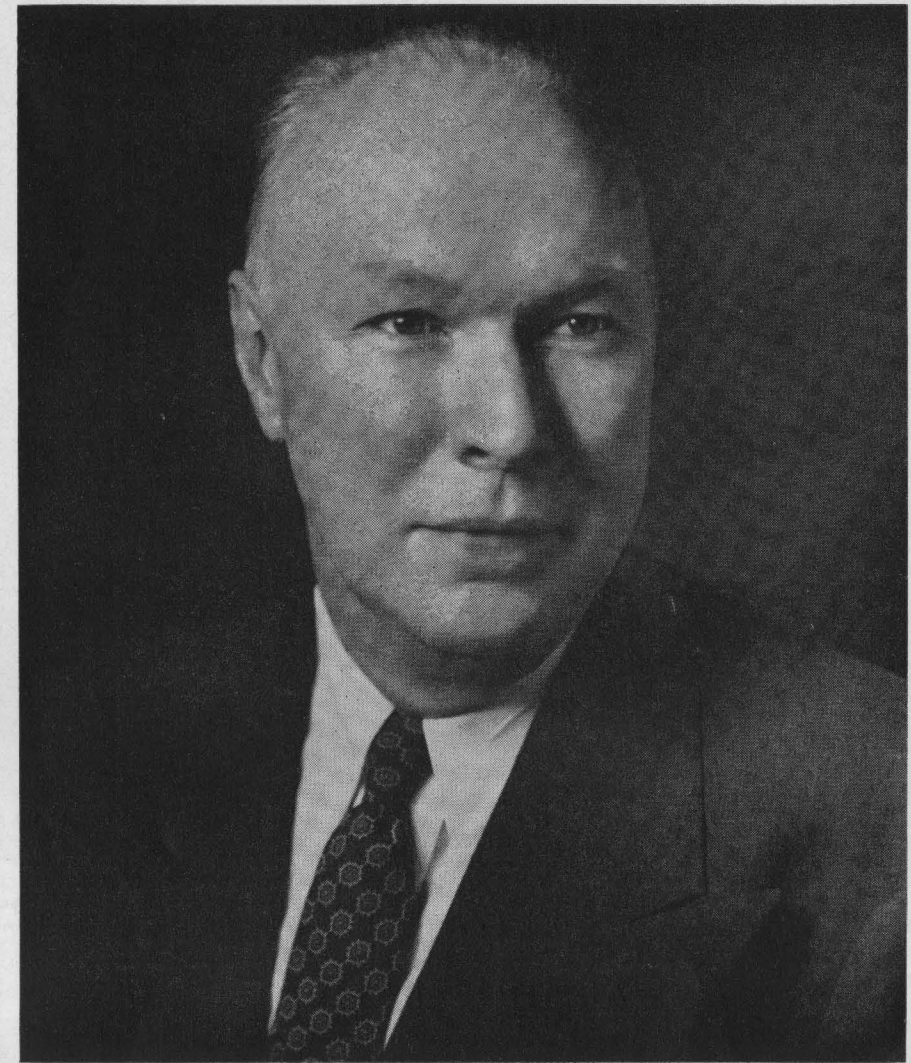
JOHN S. IVY

TERM MEMBERS

DANIEL R. BULLARD  
ROBERT P. DOHERTY  
FRANCIS T. FENDLEY

WILLIAM H. FRANCIS  
MASON G. LOCKWOOD

H. MALCOLM LOVETT  
J. T. RATHER  
HARMON WHITTINGTON



DR. WILLIAM V. HOUSTON  
President, The Rice Institute

On behalf of the Rice Institute I wish to extend a cordial welcome to all who are here today. We know the friends of Rice enjoy these games and are interested not in the score alone but in the meeting of challenge with courage and sportsmanship. Above all, we hope that you join with us and our visiting institution in believing that the greatest task in the country today is the education and development of this new generation into responsible, loyal, intelligent American citizens.

W. V. HOUSTON



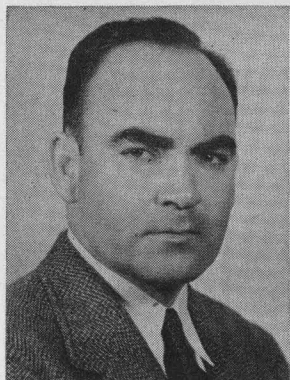
RICE INSTITUTE ATHLETIC STAFF  
JESS NEELY AND AIDES



Here is the veteran coaching staff of Rice Institute that rates as one of the finest in the nation, and one of the most experienced in that four members have been in the coaching profession for over twenty years.

Seated is the head football coach and athletic director, JESS NEELY, who this fall is serving his fourteenth year as head man of the Owls. Grouped behind him (left to right) are assistants CECIL GRIGG, who is in his twentieth year on the Rice staff; HAROLD STOCKBRIDGE, who works with varsity backs in the spring, freshmen in the fall; CHARLES MOORE, head freshman coach in football and basketball; JOE DAVIS, valuable coaching aide to Neely for 22 years at Clemson and Rice; A. M. "RED" BALE, able end coach; DELL MORGAN, veteran assistant; and EDDIE WOJECKI, well-known athletic trainer.

ADMINISTRATIVE



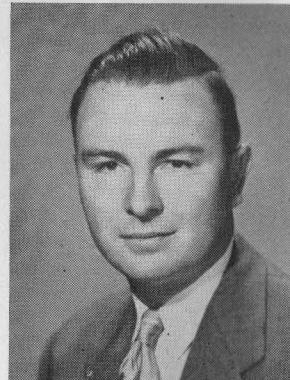
EMMETT BRUNSON  
Track Coach  
Bus. Mgr. of Athletics



DON SUMAN  
Basketball Coach



CARROLL MARTIN  
Office Manager



BILL WHITMORE  
Sports News Director

There are many persons who serve "behind the scenes" in the college grid scene. Pictured here are four full-time administrative members of the Rice staff. EMMETT BRUNSON is athletic business manager, with many and varied duties including the handling of football tickets. "Brun" also is Rice track and field coach, and as a former Olympic coach ranks high in that field. DON SUMAN, best known as head basketball coach of the Owls, in the cagers' "off season" supervises the concessions and football program. CARROLL MARTIN serves as office manager, and has numerous duties in the business office and stadium activities. BILL WHITMORE is sports news director, handling news releases, photos, program editorial copy, press box supervision, and other matters.

There are many others in the administration. MRS. CAROL ERICKSON is secretary for Mr. Neely and the coaches, while MISS JANE ALBERTSON and MRS. MARY KLAPP are full time staff members in the business office. There are many others who serve in a part time capacity in various jobs during the grid season, including supervisor BUDDY BRENNAN and the 400 uniformed ushers who give Rice Stadium fans the finest service along these lines of any stadium in the Southwest.

OFFICIAL WATCH FOR THIS GAME



Longines



The World's Most Honored Watch



LONGINES WATCHES ARE OFFICIAL  
FOR TIMING  
CHAMPIONSHIP SPORTS IN ALL  
FIELDS THROUGHOUT THE WORLD

Product of  
Longines-Wittnauer Watch Company

As constructors of the Rice Stadium, we take great satisfaction from the contests played here—not from the final score, but from the knowledge that on this field there is rivalry without rancor, defeat without dishonor, and victory without tyranny.

In this great game look not for the shoddy, the dishonest, the shirker and the fraud, for here he cannot survive.



BROWN-BILT

Brown & Root, Inc.

Engineers — Constructors

HOUSTON

The Rice Athletic Association Would Appreciate Your Patronizing Our Advertisers



## FACTS ABOUT RICE STADIUM

The massive, modern structure that is the Home of the Owls seats 70,000 fans and is one of the showplaces of Houston, largest city in the South.

Located on the southwest section of the Rice campus, the stadium is about seven miles south of downtown Houston, in close proximity to the rapidly expanding area of the city that includes the Shamrock Hotel, the new Prudential Building, and the great Medical Center of several new hospitals and medical schools. Just a short distance from Houston's main thoroughfare, South Main Street, the stadium is bound by Rice Boulevard, University Boulevard, and Greenbriar.

The only new stadium of such size to be constructed in the nation in many years, the designers and builders were able to include many new features and do away with the bad ones of other major stadia. Completed in September of 1950, the double deck structure was completed by the Brown & Root firm in just nine months!

The lower stands of Rice Stadium form a complete bowl seating 40,000, while the two upper decks on the sides extending beyond the goal lines seat 15,000 each.

There are many outstanding features of the stadium, but to list just a few that have particularly impressed the thousands who have attended games there to date (Rice home attendance will go over the 1,000,000 mark for four seasons in '53);

**The vast parking area.** Fans who must pay a premium to park in vacant lots, etc., at other stadia are especially happy with the huge asphalt-topped parking

grounds that surround the stadium and hold up to 10,000 automobiles.

**The box seats.** Opera-type fold back chairs that provide a maximum in comfort run beyond the goal lines on the west side from the 32nd to the 44th row.

**Proximity to the field.** Built strictly for football, the stadium has no track. The first row seats are within 35 feet of the sidelines. The stands are inclined gradually at a concave angle which provides for a greatly improved direct line of vision for spectators.

**Lights and scoreboards.** One of the best lighted athletic fields anywhere, light intensity on the field measures 55 foot candles. There are 16 light towers extending from the upper deck so that light poles do not obstruct the view of the fans. Each tower contains 24 lamps. There are two electrically operated, easily read scoreboards at each end of the stadium so that no one has to turn around to check the score, time to play, yardage, etc.

There are four entrances to the stadium, one at each corner, and all very wide. Spectators may enter at any gate and walk to their section inside the stadium on a wide concourse that surrounds the lower deck, only a few feet above ground level. Located on the concourse are many refreshment stands, rest rooms, telephone booths, first aid station, etc.



**M**ake The Shamrock football week-end headquarters, and be sure to schedule . . .

- **The Cavalcade of Stars**

The parade of all-star entertainment nightly except Mondays in The Emerald and Shamrock Rooms.

- **Saturday Matinee**

1 to 3 p.m. every Saturday with luncheon, dancing and complete floor show; \$3:00 for adults, \$2.00 for children.

- **The Pine Grill**

Special pre-game luncheon and supper . . . prompt service . . . reasonably priced.

*For the* **All-American Week-End**

- **SPECIAL CHARTERED BUSES**

to and from Rice Stadium and The Shamrock. See assistant manager for tickets.

- **SPECIAL ROOM RATES FOR WEEK-ENDS**

Three days, \$18.00 single, \$24.00 double.

**The Shamrock**



GLENN McCARTHY, President

FRANK H. BRIGGS, V. P. and Gen. Mgr.

Best wishes, always  
to the BLUE and GRAY!

**Cameron**  
IRON WORKS, INC.

MANUFACTURERS OF VALVES, FORGINGS, AND OIL WELL SPECIALTIES

The Rice Athletic Association Would Appreciate Your Patronizing Our Advertisers



# TONIGHT'S GAME

By **BILL WHITMORE**  
Rice Sports News Director

One of the better intersectional battles of the year is in prospect for the Gulf Coast area football fans on hand this evening at Rice Stadium.

The host Rice Institute Owls and the visiting University of Kentucky Wildcats each take a break from their own rugged conference pennant scrambles to have at it in a game that matches two high-ranking college squads. After this game, the Owls settle down for four consecutive "must" contests in the close and red hot Southwest Conference title race. Kentucky returns to Southeastern Conference territory to bid for supremacy in that strong circuit and a possible bowl bid.

The Owls, incidentally, play their next two big conference games at home. Arkansas, led by splendid single wing tailback Lamar McHan, will be here a week from tonight (on November 7th). And on the afternoon of November 14th, it will be Rice's Homecoming Game against the inspired Texas A. & M. Aggies.

But the attention of the Owls and Rice fans tonight is focused on the difficult task at hand of trying to contain a sizzling Kentucky offense that came to life after lineup changes following a couple of early season setbacks.

The Wildcats dropped a decision to the Texas Aggies by the slim margin of an extra point in their opener, then lost to powerful Mississippi. Then the veteran and colorful Kentucky coach, Paul "Bear" Bryant, put Bob Hardy in at quarterback and Ralph Paolone at fullback. And the Wildcats have been wild ever since—thrashing Florida (Houstonians saw the 'Gators in that 20-16 Owl victory earlier), Mississippi State, and Villanova, and outplaying strong L.S.U. while getting a 6-6 tie.

The Wildcats have another terrific offensive threat in all-round star Steve Meilinger, who starts at halfback, but can play end or quarterback. The 220-pound Pennsylvanian has been acclaimed as one of the nation's finest all-round players for three seasons now.

Texans remember Meilinger and standout senior guard Ray Correll quite clearly, for they were two heroes of Kentucky's victory over T.C.U. in the Cotton Bowl following the regular 1951 grid season.

In fact, Kentucky is an old hand at attending the major bowl games. Under Bryant's leadership they have appeared at the Orange and Sugar Bowls in recent years, in addition to that Cotton Bowl performance. The Wildcats definitely are one of the nation's most consistent gridiron powers.

This will be the first meeting of Rice and Kentucky but, strangely enough, the Wildcats will be operating in familiar territory...the seniors, that is. When Kentucky played T.C.U. in the Cotton Bowl, they stayed a few days in Houston to work out prior to that game, and used the Owls' dressing room, training quarters and practice field.

Tonight's game affords Rice fans an opportunity to express their interest and support of the team that came through with a stirring last-minute 18-13 victory over ever-strong Texas at Austin last Saturday. The key play of the game, of course, was the touchdown pass from Leroy Fenstemaker (26) to Dan Hart (80). But the heroic figure of that wild clash was fullback David "Kossee" Johnson (45), who turned in one of the greatest all-round performances by a Rice back in a long time.

But the Owls can't win over Kentucky by reflecting on the Texas victory. It will be a tremendous task to outscore the powerful visitors, and the effort should provide the fans with a fine football game.

## W. Cecil Sisson Mortgage Company

*Complete Financial Service*

*Roy Bean, Loan Officer*

*402 Rusk Building*

Represented for National Advertising by DON SPENCER COMPANY, INC., 271 Madison Ave., New York 16, N.Y.

*Hunting for the best*

**DODGE or PLYMOUTH DEAL?**



**JACKSON HAS IT!**

40 YEARS OF DEPENDABLE SERVICE

# JACKSON MOTORS

ALBERT H. BERRY • JACK W. JACKSON  
TEXAS' OLDEST DODGE AND PLYMOUTH DEALER  
2404 SOUTH MAIN • HOUSTON

The Rice Athletic Association Would Appreciate Your Patronizing Our Advertisers

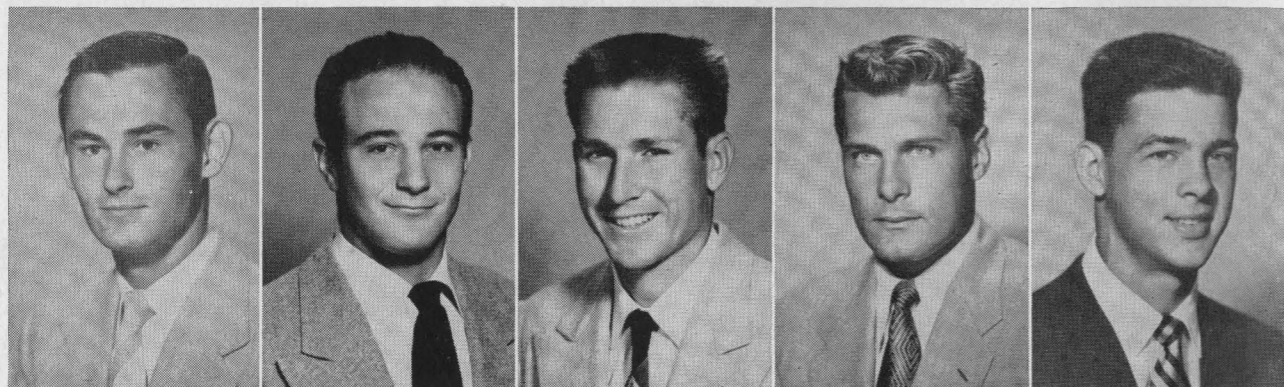


**Spring Air**  
**MATTRESSES**  
TRADE MARK REG. U.S. & CAN. PAT. OFF.

FREDERICK PARKER

**PARKER BEDDING COMPANY**

JOEL PARKER



11—Horton Nesrsta

14—Mendel Laviage

15—John Zimmerman

19—Bob Garbrecht

21—Atchley Proctor

(SEE THUMBNAIL SKETCHES ON PAGES 30 AND 31)

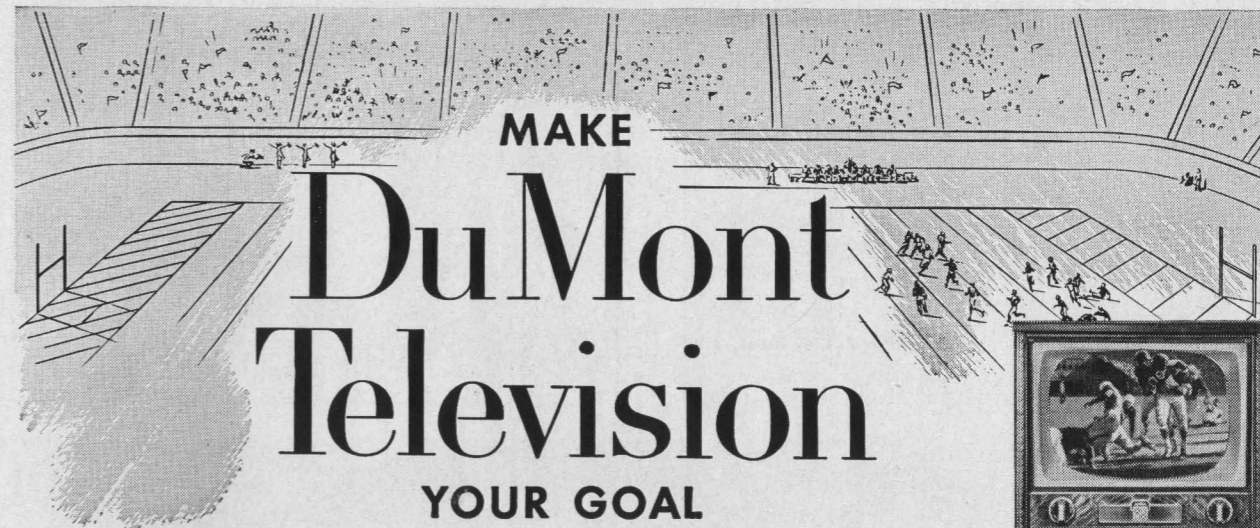
**20<sup>th</sup>**  
**YEAR**



**HUMBLE**  
 SOUTHWEST CONFERENCE  
**Football Broadcasts**

*Enjoy them every Saturday*

**GO TO THE GAMES WITH HUMBLE**



MAKE

**DuMont**  
**Television**

YOUR GOAL

*for the best football season of your life!*

DuMont Invites  
**COMPLETE\***  
**COMPARISON**

*...feature by feature*

*...at every price!*

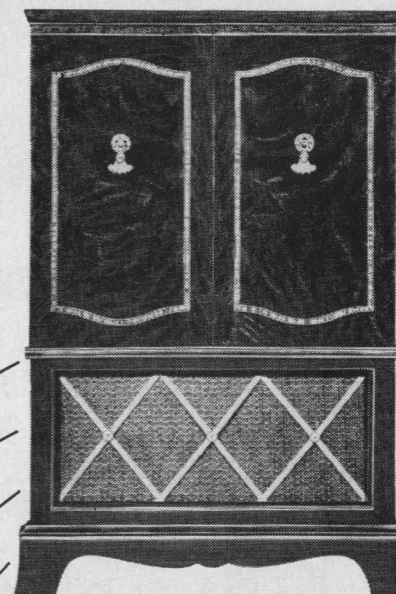
★New Clear-Picture Power  
 High-resolution picture tubes!

★DuMont Selfocus\* Tube  
 First with automatic focus!

★Optional 82-Channel Tuning  
 Most sensitive tuning in television!

★Fringe Area Excellence  
 Best reception everywhere!

★Truer Tone  
 Finer circuits, choice woods!



**DuMont de Luxe WINDSOR**  
 21-inch DuMont Selfocus\* tube. Fine 18th Century cabinet on casters, hand-rubbed mahogany finish. Phono jack. 82-channel tuning optional. Built-in UHF-VHF antenna.

Be as proud and happy as the man with seats on the 50-yard line! Follow the game, close up, to either goal! You'll never see better football on television than you see with the new DuMont—first to match or surpass every other set in every feature at every price!

★Custom-Crafted Cabinets  
 Famous design, finish, construction!

★Quality Controls  
 —of materials, parts, production!

★Thrifter Ownership  
 Save on set operation...servicing...trade-ins!

DuMont de Luxe BRADFORD  
 English Traditional cabinet, mahogany finish. 21-inch DuMont Selfocus\* tube. Phono jack. Built-in UHF-VHF antenna. Optional 82-channel tuning.

Imagine owning **DU MONT<sup>®</sup>**...from **\$199<sup>95</sup>\*\***  
**QUALITY TELEVISION**

\*Trade Mark

(for 17" table model, not illustrated)

\*\*NO EXTRA CHARGES for full-year picture tube Warranty, 90-day parts Warranty, Federal Excise Tax, built-in UHF-VHF antenna, or mahogany finish. Limed oak or blond finish slightly higher.

**H. W. SINCLAIR DISTRIBUTING CORP.**

SALES: JU-3557

4001 SOUTH MAIN

SERVICE: JA-3908

**AT YOUR AUTHORIZED DU MONT DEALER'S NOW!**



**Production Service Oil Corporation**

810 City National Bank Building

J. F. Corley

Grover J. Geiselman, Jr.

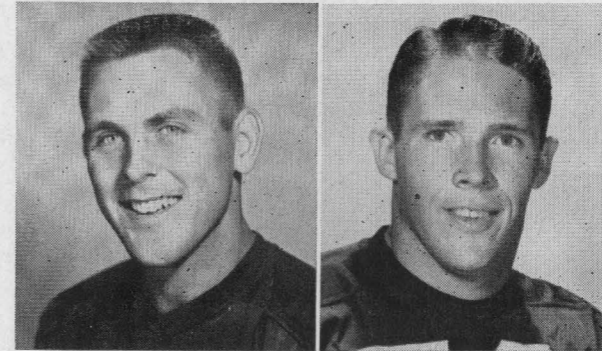
BEST WISHES  
TO THE OWLS

**W. S. Bellows Construction Corp.**



23—John "Pinky" Nisbet 25—Buddy Grantham 26—Leroy Fenstermaker 31—Morris Stone 32—Bill Gaskamp

(SEE THUMBNAIL SKETCHES ON PAGES 30 AND 31)



10—Sammie Burk

65—Jack Davis

The first Rice Institute gridders to return from military service during the Korean conflict are the two men pictured above, who are members of the 1953 Owl squad. Sammie Burk, who was called in by the Air National Guard right after the Rice grid season opener in 1951, was a teletype operator in the Air Force. He lettered with the Owls as a soph in '50. Davis entered the Air Force shortly after the 1950 season ended, and he returned after his discharge in early September of this year.

Rice Institute welcomes the return of these students, and expresses appreciation to them and all the members of the Armed Forces for their service to the nation.

COMPLETE  
METROPOLITAN  
SERVICE  
  
WITH  
RESIDENTIAL  
CONVENIENCE



*Serving Bellaire  
and Adjacent Area*

AUTO TELLER SERVICE

**FIRST STATE BANK**

BELLAIRE, TEXAS

MOhawk 3413

5123 BELLAIRE BOULEVARD

MEMBER FEDERAL DEPOSIT INSURANCE CORPORATION

**build your  
BANK CREDIT**



**with BANK LOANS  
THE NATIONAL  
BANK OF COMMERCE**  
OF HOUSTON

Gulf Building, Houston, Texas "The Bank for All the People"  
MEMBER FEDERAL DEPOSIT INSURANCE CORPORATION

**The STAR "PLAYERS"**  
on the  
**UNITED GAS TEAM**  
• • •  
**DEPENDABILITY  
and  
ECONOMY**

ALWAYS A WINNING  
COMBINATION



FOR THE BEST IN GAS SERVICE CALL . . .

**UNITED  
GAS**

THE BIGGEST BARGAIN IN YOUR HOME TODAY  
PHONE AT-5111

Drinks in Stadium are cooled with  
Texas Ice "Sized Ice"

**TEXAS ICE & FUEL  
COMPANY**

6301 Harrisburg

WAside 2154

The Rice Athletic Association Would Appreciate Your Patronizing Our Advertisers

Represented for National Advertising by DON SPENCER COMPANY, INC., 271 Madison Ave., New York 16, N.Y.



# Foote's Cafeteria

Houston's Finest Suburban  
Dining Room

2 Blocks West of Stadium

Continuous Service 11:00 A.M. to 8:30 P.M.

2407 RICE BOULEVARD

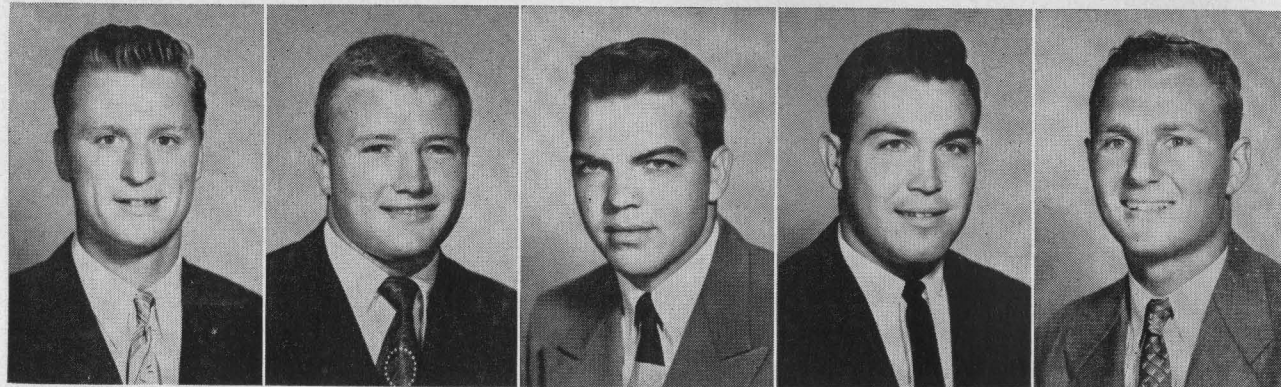
7 Days a Week

## CONSOLIDATED CHEMICAL INDUSTRIES INC.

Heavy Chemicals for Industry

640 MELLIE ESPERSON BLDG.

HOUSTON 2, TEXAS



35—Bill Keller

36—Gordon Kellogg

39—Steve Curry

40—Mac Taylor

41—John Faseler

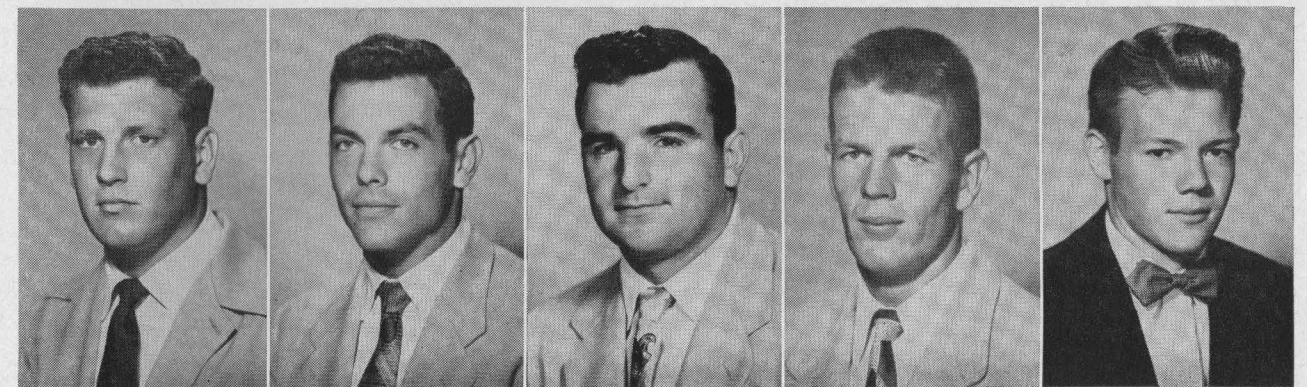
(SEE THUMBNAILED SKETCHES ON PAGES 30 AND 31)

# NAME BRAND Sporting Goods

OPEN DAILY 9 A.M.—6 P.M.

HOUSTON SPORTS SHOP

4717 Main Street, Houston • Telephone KE-8660, JU-2131



42—Don Whittaker

43—Carl Johnson

44—Jerry Hall

45—"Kosse" Johnson

47—Dicky Moegle

(SEE THUMBNAILED SKETCHES ON PAGES 30 AND 31)

Everybody cheer  
for the "DOUBLE GOOD" beer...

## Southern Select



After the game . . . when you're double dry . . .  
Double Good Southern Select is the beer to try!

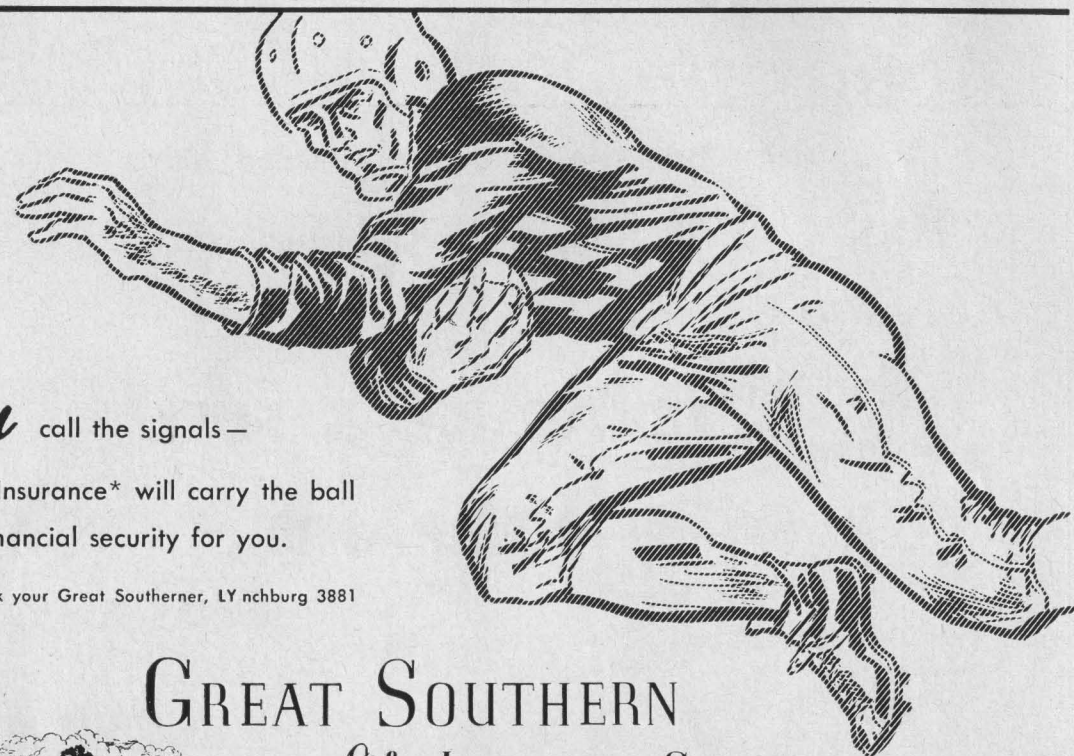
Once you do you'll agree that beer was never so good before.

Ask for Double Good  
Southern Select.

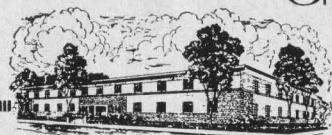
You call the signals—

Life Insurance\* will carry the ball  
to financial security for you.

\*Ask your Great Southerner, LY nchburg 3881



GREAT SOUTHERN  
Life Insurance Company



4310 Dunlavy • Houston 6, Texas

DOUBLE GOOD  
Southern Select  
BEER

Galveston-Houston Breweries, Inc., Galveston, Texas

Represented for National Advertising by DON SPENCER COMPANY, INC., 271 Madison Ave., New York 16, N.Y.



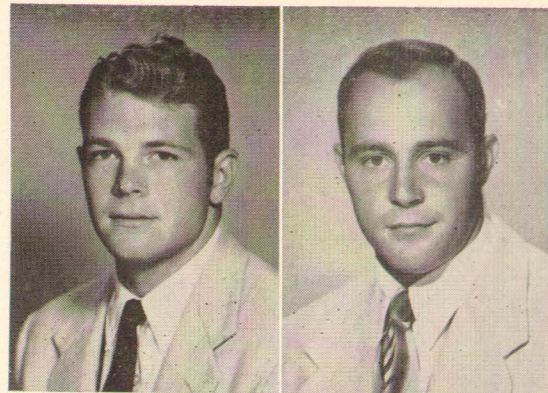
**SELECT AND BRAND THE STEAK OF YOUR CHOICE**

Home of the **Finest Steaks** and the **Big Baked Potatoes**

**Ye Old College Inn**

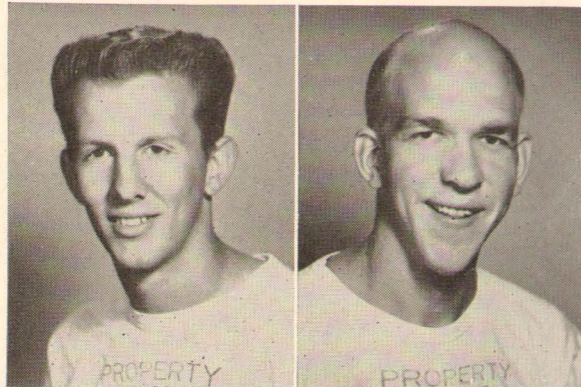
6545 MAIN STREET  
LY-6484

5 to 11 P.M. — Sundays 12 to 9 P.M.  
Closed Tuesdays



48—Page Rogers

49—Gino Biasatti



John Wolda, Manager

Bill Davis, Manager

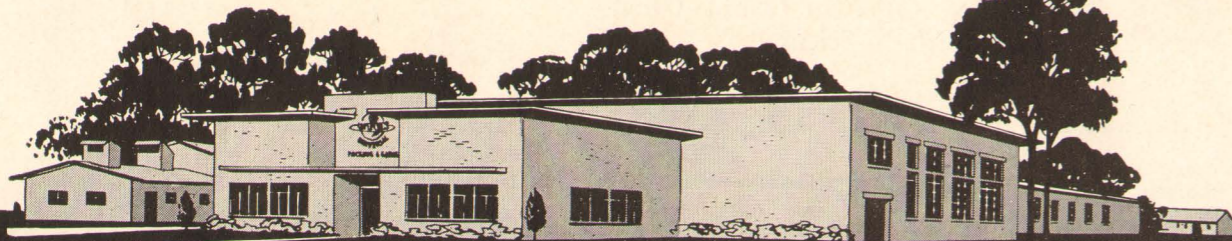


• Houston Owned and Operated

**PROGRESS...**

We have combined well over 100 years of practical experience and technical knowledge with honest endeavor . . . to manufacture **QUALITY PRODUCTS** that have gained the confidence and high regard of our customers everywhere.

Our **MODERN, UP-TO-DATE**, ever-expanding plant is capable of handling your requirements.



**UNIVERSAL PACKING AND GASKET COMPANY**

5200 Clinton Drive

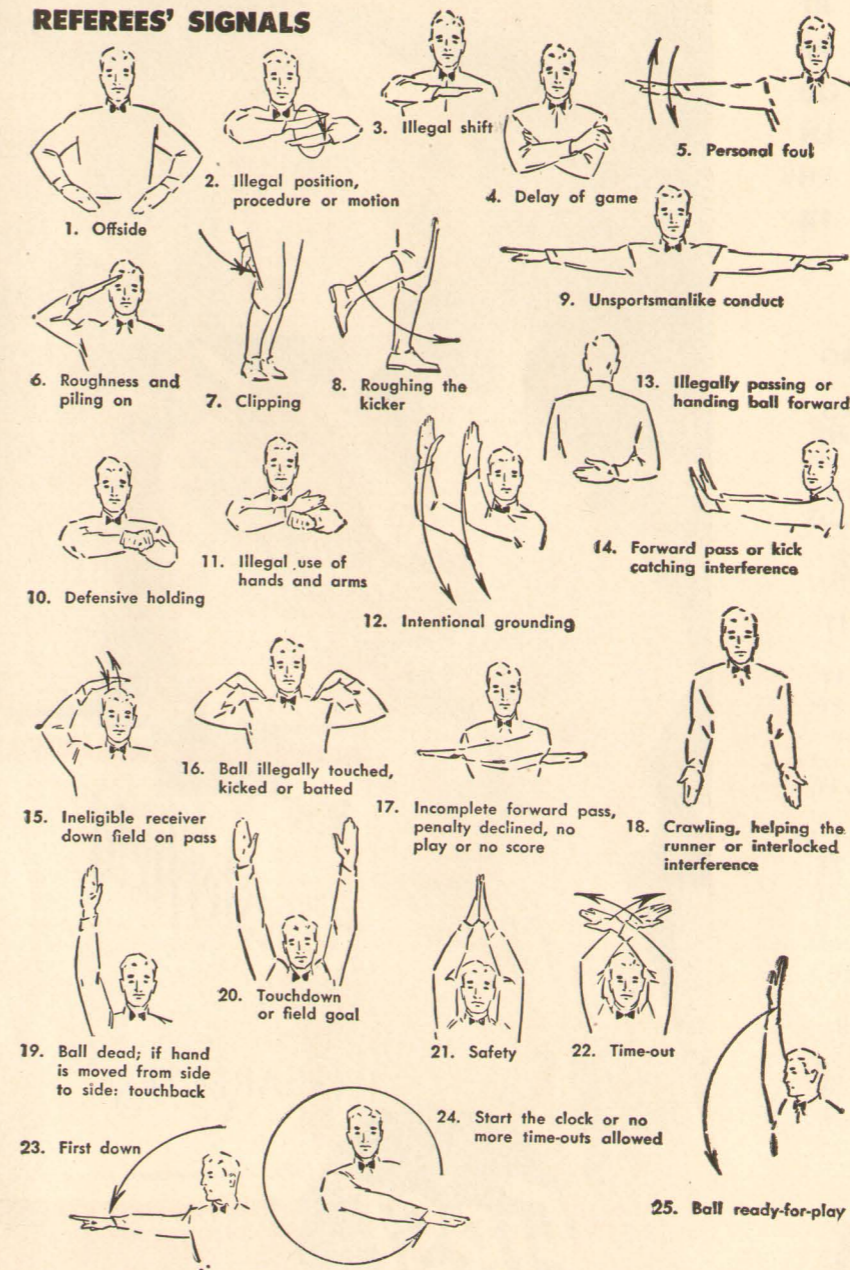
Houston 20, Texas

"The Official Watch for Timing this Game is Longines . . . The World's Most Honored Watch"

**REFRESHING**

DRINK **Coca-Cola**  
REG. U.S. PAT. OFF.  
IN BOTTLES

**REFEREES' SIGNALS**



SEE PAGE 20 FOR PENALTIES



COPYRIGHT 1933, THE COCA-COLA COMPANY

HOUSTON COCA-COLA BOTTLING COMPANY ★ 2800 BISSONNET



## RICE

### PROBABLE STARTING LINE-UP

No.	Name	Position
80	DAN HART . . . . .	LE
78	RICHARD CHAPMAN . . . .	LT
70	JOHN HUDSON . . . . .	LG
55	LEO RUCKA . . . . .	C
60	KENNETH PAUL . . . . .	RG
72	MAX SCHUEBEL . . . . .	RT
89	BLOIS BRIDGES . . . . .	RE
26	LEROY FENSTEMAKER . . .	QB
47	DICKY MOEGLE . . . . .	LH
10	SAMMIE BURK . . . . .	RH
45	DAVID "Kosse" JOHNSON .	FB

### THE RICE SQUAD

10	Burk, RH	61	Rayburn, RG
11	Nesrsta, LH	62	Lee, RG
14	Laviage, LH	63	Harpold, RG
15	Zimmerman, QB	64	Siragusa, RG
19	Garbrecht, FB	65	Davis, LG
21	Proctor, QB	66	Terrell, LG
23	Nisbet, QB	67	Treadway, LG
25	Grantham, QB	68	Tully, RG
26	Fenstemaker, QB	70	Hudson, LG
31	Stone, RH	71	Trask, RT
32	Gaskamp, RH	72	Schuebel, LT
35	Keller, FB	73	Cox, RT
36	Kellogg, RH	74	Trenholm, LT
39	Curry, RH	75	Golemon, RT
40	Taylor, LH	76	Moore, LT
41	Faseler, RH	77	Riviere, RT
42	Whittaker, FB	78	Chapman, LT
43	Johnson, Carl, RH	80	Hart, LE
44	Hall, FB	81	Woolbright, RE
45	Johnson, "Kosse", FB	82	Wortham, RE
47	Moegle, LH	84	Crawford, RE
48	Rogers, RH	85	Costa, RE
49	Biasatti, FB	86	Roady, LE
50	Purvis, LG	87	Harrison, LE
54	Wilson, C	88	Ward, LE
55	Rucka, C	89	Bridges, RE
56	Stewart, C	90	Holland, LE
59	Lundstedt, C	91	Kothman, RE
60	Paul, RG		

*Choice of Young America*  
**CHESTERFIELD**



**FIRST**

WITH **PREMIUM QUALITY**

## KENTUCKY

### PROBABLE STARTING LINE-UP

No.	Name	Position
84	H. SCHNELLENBERGER . . .	LE
62	DUKE CURNUTTE . . . . .	LT
65	RAY CORRELL . . . . .	LG
50	TOMMY ADKINS . . . . .	C
66	JOE KOCH . . . . .	RG
79	HARRY KIRK . . . . .	RT
87	JIM PROFFITT . . . . .	RE
14	BOB HARDY . . . . .	QB
80	STEVE MEILINGER . . . . .	LH
29	JOE PLATT . . . . .	RH
35	RALPH PAOLONE . . . . .	FB

### THE KENTUCKY SQUAD

11	Rushing, FB	52	Mullins, C
14	Hardy, QB	54	Williams, C
16	Hunt, QB	55	Kuhn, C
17	Shatto, QB	60	Walton, LG
18	Bezuk, QB	62	Curnutte, RG
19	Delmar, QB	63	Philpot, LG
20	George, LH	64	Rouse, LG
21	Willard, HB	65	Correll, LG
22	Moloney, RH	66	Koch, RG
24	Brown, RH	67	Lowry, LG
25	Mitchell, Billy, LH	71	Schenk, RT
26	Mitchell, Dick, LH	72	Wheeler, RT
27	Elliott, RH	74	Petett, LT
28	Phillips, RH	75	Lutz, LT
29	Platt, RH	76	Bivin, LT
31	Fillian, FB	77	Harper, LT
32	Netoskie, RH	79	Kirk, RT
33	Hanley, FB	80	Meilinger, LH
34	Callahan, FB	82	Hennessey, LE
35	Paolone, FB	84	Schnellenberger, LE
36	Gibson, FB	85	Mills, RE
37	Walker, FB	86	Schaefer, LT
50	Adkins, C	87	Proffitt, RE
51	Strange, C	89	Zampino, LE

**CHESTERFIELD**  
*BEST FOR YOU*

**CHESTERFIELD**  
*BEST FOR YOU*



DRINK  
**Coca-Cola**  
REG. U.S. PAT. OFF.  
IN BOTTLES

# DELICIOUS



## PENALTIES

### LOSS OF FIVE YARDS

- |  |  |
|--|--|
| <ol style="list-style-type: none"> <li>1. Taking more than five times out during either half (except for replacement of injured player).</li> <li>2. Illegal delay of game.</li> <li>3. Failure to complete substitution before play starts.</li> <li>4. Violation of kickoff formation.</li> <li>5. Player out of bounds when scrimmage begins.</li> <li>6. Putting ball in play before Referee signals "Ready-for-play".</li> <li>7. Failure to maintain proper alignment of offensive team when ball is snapped. Also,</li> </ol> | <ol style="list-style-type: none"> <li>8. Offside by either team or encroachment on neutral zone.</li> <li>9. Attempt to draw opponents offside.</li> <li>10. Crawling by runner.</li> <li>11. Illegal forward pass (includes intentional grounding of forward pass). Also loss of down.</li> <li>12. Taking more than two steps after Fair Catch is made.</li> <li>13. Player on line receiving snap.</li> <li>14. Any violation of the scrimmage formation.</li> </ol> |
|--|--|

### LOSS OF FIFTEEN YARDS

- |   |  |
|---|--|
| <ol style="list-style-type: none"> <li>15. Team not ready to play at scheduled time.</li> <li>16. Violation of rules during intermission.</li> <li>17. Illegal return of suspended player.</li> <li>18. Interference by member of offensive team with defensive player making pass interception. (Also loss of down.)</li> <li>19. Interference with opportunity of player of receiving team to catch a kick.</li> <li>20. Illegal use of hands or arms by offensive player.</li> </ol> | <ol style="list-style-type: none"> <li>21. Tackling or blocking defensive player who has made fair catch.</li> <li>22. Roughing the kicker.</li> <li>23. Piling up, hurdling, clipping.</li> <li>24. Tackling player out of bounds, or running into player obviously out of play.</li> <li>25. Coaching from sidelines.</li> <li>26. Failure to stop one full second following shift.</li> <li>27. Defensive holding.</li> <li>28. Invalid Signal for Fair Catch.</li> </ol> |
|---|--|

### OTHER PENALTIES

- |   |  |
|---|--|
| <ol style="list-style-type: none"> <li>29. Striking an opponent with fist, forearm, elbow or locked hands, kicking or kneeing — Mandatory disqualification of offending player plus loss of fifteen yards.</li> <li>30. Foul within the one yard line — half the distance to the goal.</li> <li>31. Interference by defensive team on forward pass — passing team's ball at spot of foul and first down.</li> <li>32. Forward pass being touched by ineligible receiver beyond</li> </ol> | <p>the line of scrimmage — loss of fifteen yards from spot of preceding down and loss of a down.</p> <ol style="list-style-type: none"> <li>33. Illegal touching of kicked ball within opponent's ten yard line — touchback.</li> <li>34. Flagrantly rough play or unsportsmanlike conduct — Mandatory disqualification plus loss of fifteen yards.</li> <li>35. Eligible pass receiver who goes out of bounds and later touches a forward pass—loss of down.</li> </ol> |
|---|--|

SEE PAGE 17 FOR OFFICIAL SIGNALS

HOUSTON COCA-COLA BOTTLING COMPANY ★ 2800 BISSONNET

## QUINBY EMPLOYMENT SERVICE

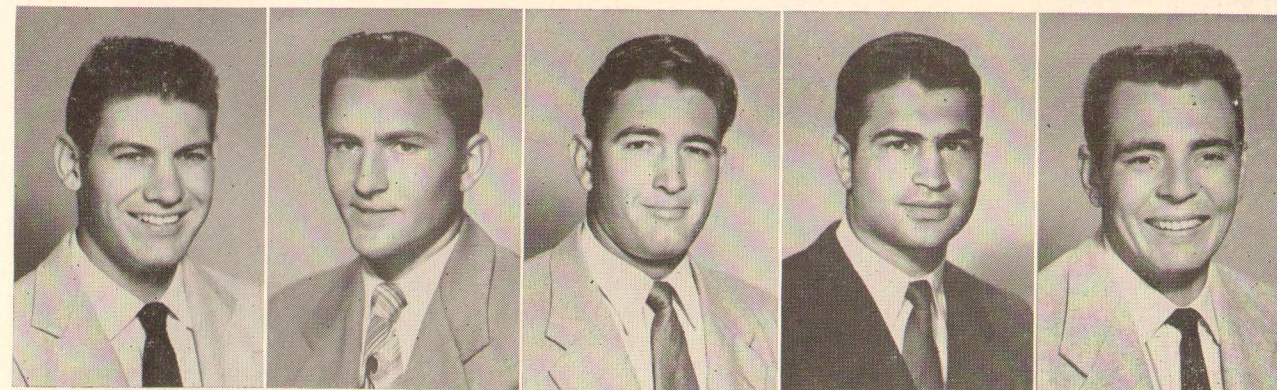
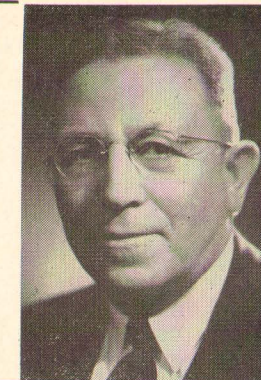
"A Name Worth Remembering"

You can benefit from our many years experience in the personnel field Executive, Office, Sales, and Technical Personnel

Member National Employment Board, Chamber of Commerce and National Association Personnel Consultants

409 Bankers Mortgage Building

Houston 2, Texas



54—Don Wilson

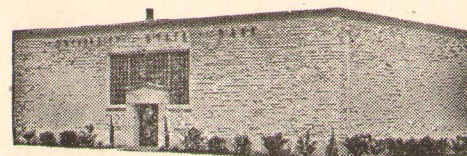
55—Leo Rucka

56—Carmon Stewart

60—Kenneth Paul

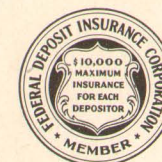
61—Eddie Rayburn

(SEE THUMBNAIL SKETCHES ON PAGES 30 AND 31)



COMPLETE METROPOLITAN SERVICE

WITH RESIDENTIAL CONVENIENCE



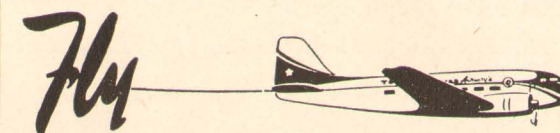
Serving Southwest Houston, West University Place and Southside Place

AUTO TELLER SERVICE

### UNIVERSITY STATE BANK

Keystone 5574

6135 KIRBY DRIVE at AMHERST



26-Seat DC-3 "Super Starliners" to Southwest Conference Games!

for Information or Reservations

CALL TRANS-TEXAS OR YOUR LOCAL TRAVEL AGENT

Now serving ARKANSAS, TEXAS LOUISIANA and TENNESSEE



"The Official Watch for Timing this Game is Longines . . . The World's Most Honored Watch"



## Rice Band, Yell Leaders Provide Color for Grid Games

"Unsung heroes" of many a football game are the members of the student band and yell leaders. The music of the band and the organized cheering of the student section helps arouse the enthusiasm of the fans and, in turn, that enthusiasm is transmitted to the players.

While the game commands the greatest attention, to many spectators the stirring music of the bands and the halftime performances provide a good part of the entertainment.

At Rice Institute, the band is under the direction of M. H. McNeely. There are approximately 70 members of the organization. These men—and the drum majorettes—put in about ten hours a week rehearsing for their music and marching activities.

Key members of the band are Bob Eggleston, the president, and drum major George Beck. The majorettes are Virginia Easley, Barbara Simons, Marilyn Webb, and Maurine Bell.

The yell leaders, who are elected by the Rice student body in spring campus elections, are headed by Bill Harrison. His worthy aides are Sander Frindell, John Gibbs, Carolyn Thomas, and the popular "TV Twins" of Rice—Joan and Jane Ryba.

For the fans who would like to sing along with the students, here are the words to the Rice alma mater and fight song:

### Rice Songs

#### RICE'S HONOR

All for Rice's honor, we will fight on.  
We will be fighting when this day is done;  
And, when the dawn comes breaking,  
We'll be fighting on, Rice,  
For the Gray and Blue. We will be loyal  
To Rice be true.

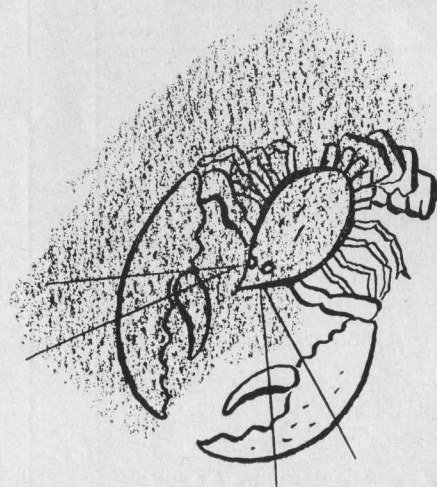
#### GRAY BONNET

Put on your old gray bonnet, with the blue  
ribbon on it,  
And we'll hitch Old Sammy to the fray,  
And we'll rock, rock, rock 'em  
And we'll sock, sock, sock 'em,  
To the end of Judgment Day.

#### FIGHT SONG

Fight for Rice; Rice, fight on; Loyal sons, arise!  
The Blue and Gray, of Rice today  
Comes breaking through the skies.  
Stand and cheer! Victory's near!  
Sammy leads the way.  
Onward go, to crush the foe.  
We'll fight for the Blue and Gray.  
Rice... Fight... never dies.  
Blue... Gray... in the Skies  
Stand... Cheer Rah, Rah, Rah.  
Go... Go... Yeaaaaaa Rice!

Roland Busch's

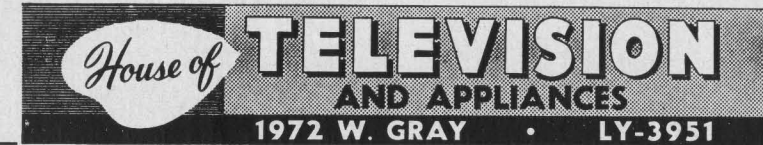


the famous seafood and lobster  
house • 8419 so. main • mo. 5-2703

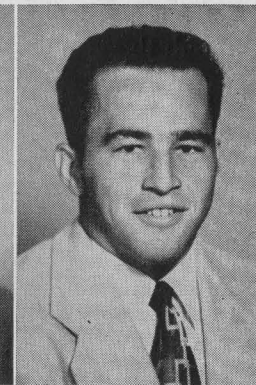
A Sure Winner For Your Football Pleasure

## DU MONT TELEVISION

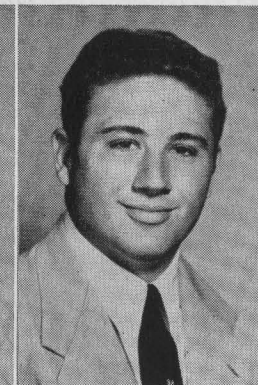
COME IN AND MEET W. A. "BILL" GALBREATH CLASS OF '23



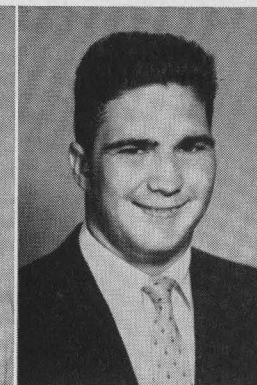
62—LaMar "Skip" Lee



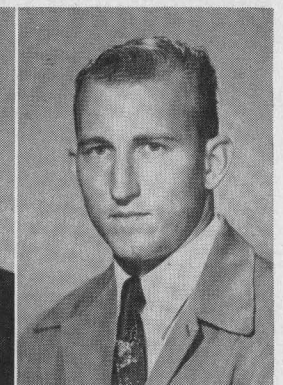
63—Lew Harpold



64—Tommy Siragusa



66—Everard Terrell



67—W. C. Treadway

(SEE THUMBNAIL SKETCHES ON PAGES 30 AND 31)

### Rice Freshman Football

A Friday night game on November 13th with the Texas A. & M. "Fish" at Rice Stadium highlights the home schedule of the 1953 Rice freshman grid squad. The proceeds from the game, which will be part of Homecoming activities, will go to the fund for maintenance of the Holly Hall Home for the Aged.

Freshman coach Charlie Moore and aide Harold Stockbridge will handle the squad of potential Owl varsity stars of the mid-fifties.

Here is the Owlet schedule for this fall:

- Oct. 2 (8:00) Allen Academy  
in Houston
- Oct. 16 (2:00) S.M.U. Freshmen  
in Dallas
- Oct. 23 (2:00) Texas Freshmen  
in Austin
- Nov. 13 (8:00) Texas A. & M. Freshmen  
in Houston
- Nov. 19 (2:00) Baylor Freshmen  
in Waco

### AT LUNCH OR DINNER

You can always enjoy a delicious meal in the  
Warwick's Famous Crystal Dining Room

A PLEASURE TO SERVE YOU



R. T. CULLATHER, Manager

WARWICK HOTEL

AND APARTMENTS

Houston 1, Texas

The Rice Athletic Association Would Appreciate Your Patronizing Our Advertisers



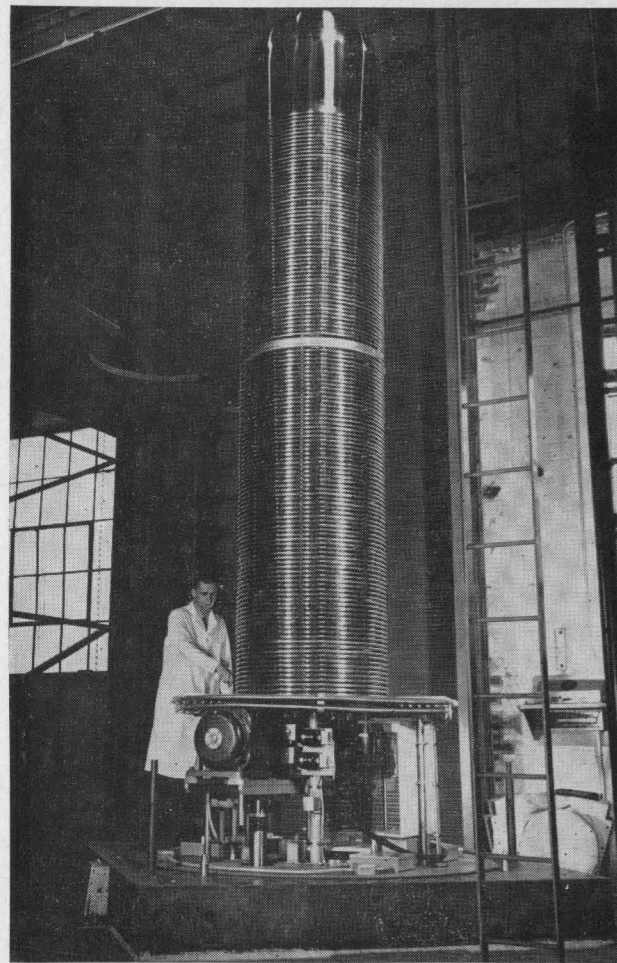
## FACTS ABOUT RICE

Founded by Houston philanthropist, the late William Marsh Rice, who provided the original endowment and set for the objectives—a non-sectarian institute for the advancement of literature, science, art, philosophy, and letters, and for cultivating other means of instruction.

The school was established under a charter issued by the State of Texas on May 16, 1891. However, the first classes were not held until 1912 upon completion of the building program and finish of a thorough study of other educational institutions so as to provide an outstanding curriculum.

Rice has a limited enrollment of approximately 1,600 students who must meet high entrance requirements. This provides for a low student-instructor ratio and a maximum of individual attention for the students.

There is no tuition charged at Rice, only laboratory fees where necessary. This provides the ad-



Five-Million-Volt Van de Graaff Vertical Positive-Ion Accelerator

vantage of an outstanding advanced education with the finest in facilities at a minimum expense for those admitted.

Rice Institute is a private institution, financed by endowments and investments.

The large and picturesque campus, about seven miles from the downtown section of Houston, is in the heart of the fast growing southwest sector of new commercial locations and fashionable residences. The campus comprises about 300 acres.

While the enrollment is held down to Rice in line with the low student-instructor ratio previously mentioned, the Institute has had considerable expansion of the physical plant and the curriculum through the years.

Most recent addition is the laboratory housing the \$500,000 Van de Graaff machine for research in atomic energy, which has been awarded Rice by the Atomic Energy Commission on a permanent loan for experimental purposes. The building was completed and dedicated only last spring, and the research program is now under way, directed by Dr. T. W. Bonner of the Rice faculty, who is recognized as one of the world's foremost atomic physicists.

Other major additions to the campus since World War II include one of the nation's outstanding libraries, the finely appointed Fondren Library of a quarter of a million volumes (and completely air conditioned for visitors' comfort) . . . also new on the campus is the M. D. Anderson class room and faculty offices building . . . the Abercrombie Engineering Laboratory . . . and Wiess Hall, a modern dormitory for two hundred men students.

Still to come is a new school of geology, which is now being established with classes tentatively slated to begin in 1954. It is to be financed through approximately \$1,500,000 in a generous gift of Humble Oil & Refining Company stock given the Institute by Mrs. Harry Carothers Wiess, widow of the late Mr. Wiess, who was a member of the school's Board of Trustees.

Known throughout the world as an educational institute of the highest standing, much of the credit for this reputation goes to the educators, who are headed by the school president, Dr. William V. Houston. This famed atomic physicist, who still does teaching and research in addition to his administrative duties as school president, came to Rice in 1947—after twenty years on the faculty of the California Institute of Technology—to succeed the beloved Dr. Edgar Odell Lovett upon the latter's retirement to the position of President Emeritus. Dr. Lovett, who played a major role in the establishment of the Institute, was the first president and served in that capacity for 35 years.

☆ *The Southwest's  
Finest . . .  
and reasonable, too!*

**WELDON** Cafeteria  
4916 South Main

- Open Daily—11:00 a.m. through 8:30 p.m.
- Two Free Parking Lots Adjoining

## South End Building Materials Co.

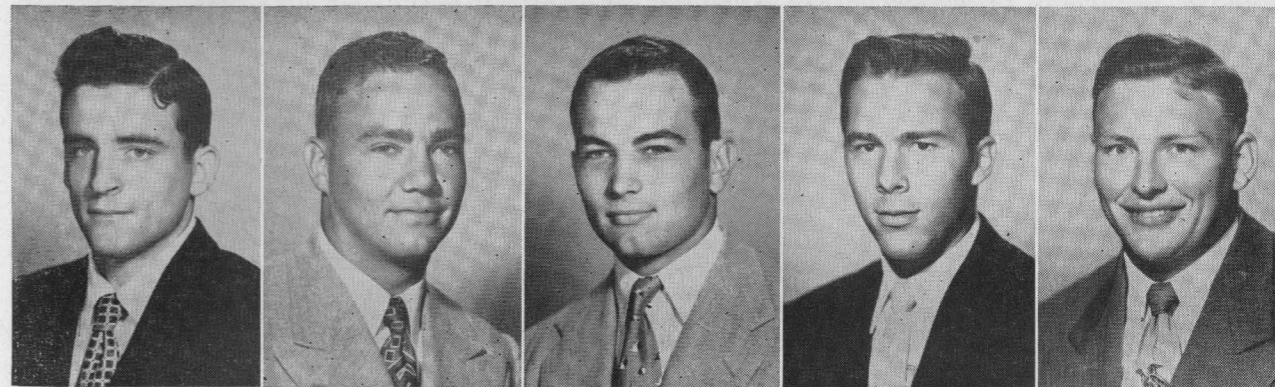
READY MIX CONCRETE  
SAND — GRAVEL — CEMENT

South Houston Plant  
5102 Galveston Road  
Phone MI-3328

Deer Park Plant  
Deer Park, Texas  
Phone GR-9-2251

Post Oak Road Plant  
Gassmer Drive  
Phone MA-8379

Kirby Drive Plant  
4830 Kirby Drive  
Phone LY-9131



68—Steve Tully

70—John Hudson

71—Orville Trask

72—Max Schuebel

73—LaVon Cox

(SEE THUMBNAIL SKETCHES ON PAGES 30 AND 31)

Enjoy the game more with a

**foremost**

**TRIPLE GOODNESS**

**ICE CREAM BAR**

SERVED THROUGHOUT THE STADIUM

HOUSTON'S FOREMOST DAIRIES

1705 WASHINGTON AVENUE

Central 9406

Represented for National Advertising by DON SPENCER COMPANY, INC., 271 Madison Ave., New York 16, N.Y.

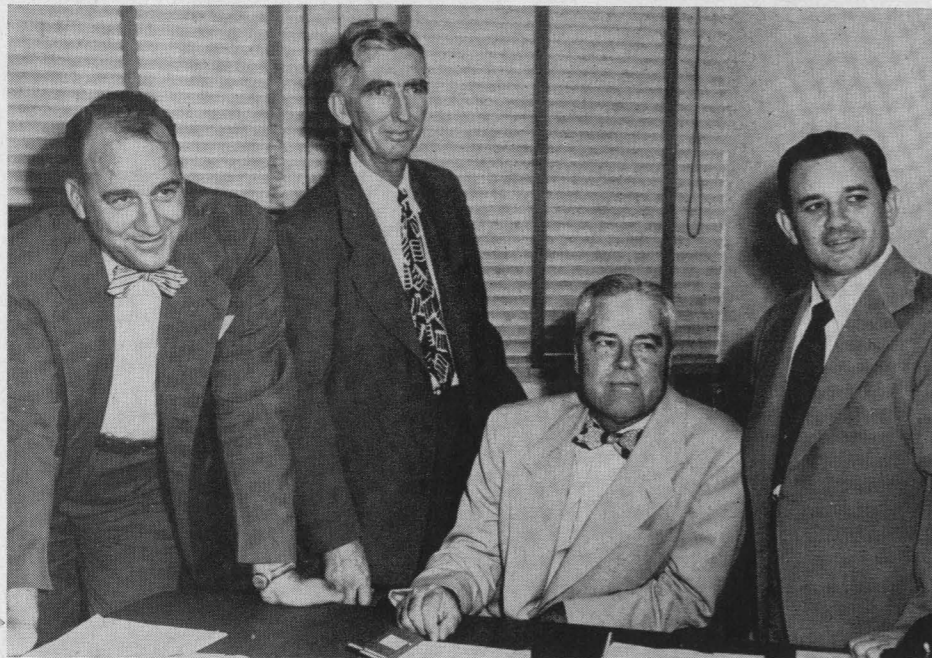


**1953 RICE  
TRI-CAPTAINS  
AND COACH**

Here are the Owl leaders for this fall, Coach JESS NEELY pictured with the tri-captains who were elected by their teammates last spring. Left to right, RICHARD CHAPMAN, tackle from Waxahachie; LEO RUCKA, center from Crosby; JOHN HUDSON, guard from Center. All are seniors.



**Medical and Training Care of Rice Athletes**



Sorsby      Dr. Brannon      Dr. Smith      Dr. Welsh      Trainer Wojceki      Loeser

An important part of any athletic program is the prevention of serious injuries in contact sports by the use of proper training methods and modern equipment. At Rice, such a program is under the immediate supervision of head athletic trainer Eddie Wojceki, member of the 1952 U. S. Olympic training staff and recognized as a leader in his field.

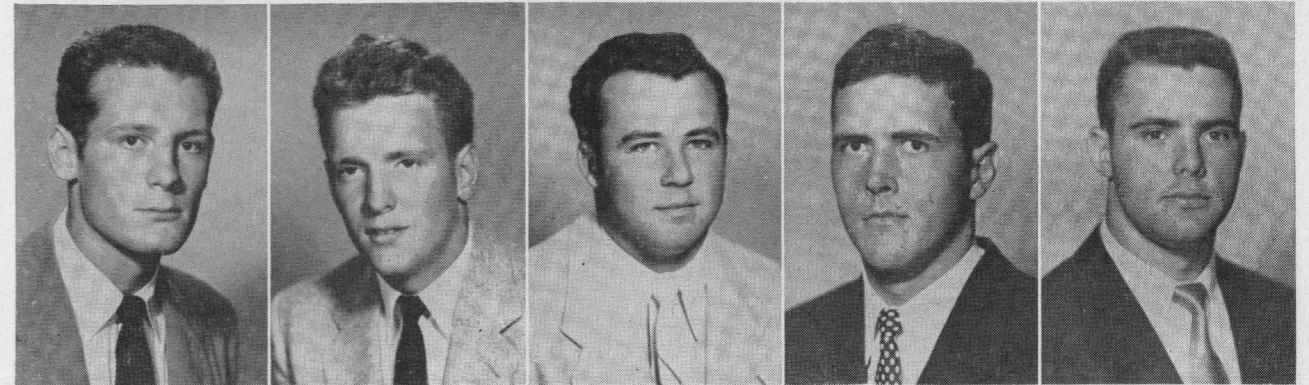
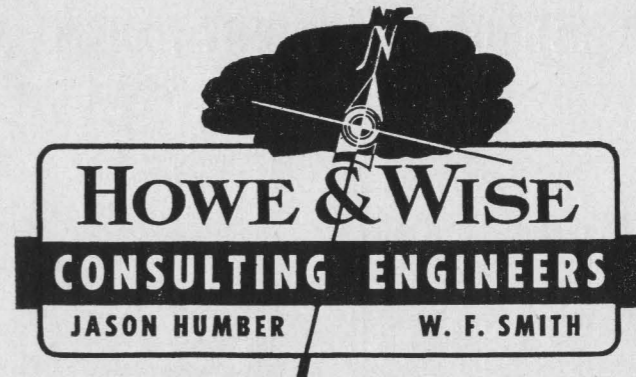
In the event injuries do occur that require the attention of physicians, Rice is fortunate to have available the services of the team

physician for many years, Dr. Hugh Welsh, and as special consultants Dr. Jack Brannon and Dr. Edward T. Smith.

Attending to duties in the sizable athletic equipment room is veteran Rice employe, J. R. Sorsby. Assisting Wojceki in the training room and in the considerable "behind the scenes" detail work is student assistant trainer Louis Loeser, and undergraduate managers John Wolda and Bill Davis.

Jason Humber  
Class of '22

W. F. Smith  
Class of '26



75—Layton Golemon      76—Harris Moore      77—Jay Riviere      78—Richard Chapman      80—Dan Hart  
(SEE THUMBNAIL SKETCHES ON PAGES 30 AND 31)

*Complete Insurance Coverage*

**American General Group**

American General Investment Corporation

American General Life Insurance Company

American General Insurance Company

RUSK BUILDING

HOUSTON, TEXAS

The Rice Athletic Association Would Appreciate Your Patronizing Our Advertisers



## 1953 RICE INSTITUTE OWLS VARSITY FOOTBALL ROSTER

No.	Name	Pos.	Wt.	Ht.	Age	Class	Exp.	Home Town
10	Sammie Burk	RH	190	6-0	21	Junior	1 VL	Luling
11	Horton Nestrta	LH	147	5-9	22	Senior	2 VL	San Antonio
14	Mendel Laviage	LH	180	5-7	19	Soph.	FL	Houston
15	John Zimmerman	QB	167	6-0	19	Soph.	FL	Cuero
19	Bob Garbrecht	FB	200	6-1	20	Soph.	1 VL	New York City, N. Y.
21	Atchley Proctor	QB	170	6-0	19	Junior	1 Sq.	DeKalb
23	John "Pinky" Nisbet	QB	185	6-1	20	Soph.	FL	Houston
25	Buddy Grantham	QB	178	6-3	20	Senior	2 Sq.	Grand Prairie
26	Leroy Fenstemaker	QB	195	6-2	21	Senior	1 VL	Llano
31	Morris Stone	RH	167	5-9	20	Junior	1 VL	Kerrville
32	Bill Gaskamp	RH	170	5-11	21	Junior	1 Sq.	Brenham
35	Bill Keller	FB	196	5-11	19	Soph.	FL	Waco
36	Gordon Kellogg	RH	171	5-10	20	Junior	1 VL	Baytown
39	Steve Curry	RH	180	5-11	20	Soph.	FL	Donna
40	Mac Taylor	LH	180	5-10	20	Soph.	1 Sq.	Lubbock
41	John Faseler	RH	191	6-0	20	Soph.	FL	Hondo
42	Don Whittaker	FB	192	6-1	21	Senior	1 VL	Dallas
43	Carl Johnson	RH	177	6-0	20	Senior	1 VL	Houston
44	Jerry Hall	FB	207	6-1	20	Soph.	FL	Palestine
45	David "Kosse" Johnson	FB	178	6-0	21	Senior	2 VL	Baytown
47	Dicky Moegle	LH	167	6-0	19	Junior	1 Sq.	Taylor
48	Page Rogers	RH	190	6-0	20	Soph.	FL	Houston
49	Gino Biasatti	FB	187	5-10	21	Senior	2 Sq.	Dallas
50	Bill Purvis	LG	215	5-11	19	Soph.	FL	Waco
54	Don Wilson	C	210	6-3	19	Soph.	FL	Houston
55	Leo Rucka	C	204	6-3	22	Senior	2 VL	Crosby
56	Carmon Stewart	C	202	6-2	20	Junior	1 Sq.	Palestine
59	Larry Lundstedt	C	188	5-11	20	Junior	1 Sq.	Austin

## 1953 KENTUCKY VARSITY ROSTER

No.	Name	Pos.	Age	Ht.	Wt.	Class	Exp.	Home Town
11	Dick Rushing	FB	20	6-0	178	Junior	1 VL	Camden, Ark.
14	Bob Hardy	QB	20	6-1	180	Soph.		Paducah, Ky.
16	Herb Hunt	QB	22	6-1	165	Senior	2 VL	Mayfield, Ky.
17	Dick Shatto	QB	20	6-1	190	Soph.	1 VL	Springfield, Ohio
18	Ivan Curnutte	LH	17	5-7	155	Fresh.		Ashland, Ky.
19	John Delmar Hughes	QB	18	6-1	183	Fresh.		Prestonsburg, Ky.
20	Henry George	LH	19	5-8	160	Fresh.		Honolulu, Hawaii
21	Miles Willard	HB	22	6-0	165	Senior	1 VL	Vandergrist, Pa.
22	Dick Moloney	RH	19	5-11	170	Soph.	1 VL	Covington, Ky.
24	Locky Brown	RH	20	6-1	165	Soph.		Beverly Hills, Calif.
25	Billy Mitchell	LH	18	6-2	180	Fresh.		Georgetown, Ky.
26	Dick Mitchell	LH	23	5-8	160	Junior	1 VL	Somerset, Ky.
27	Ralph Moran	LE	19	6-2	185	Fresh.		Belfry, Ky.
28	Bob Phillips	RH	19	5-10	175	Soph.		Pikeville, Ky.
29	Joe Platt	RH	22	5-11	175	Senior	1 VL	Kokomo, Ind.
31	Tom Fillian	FB	23	5-10	180	Senior	2 VL	Owensboro, Ky.
32	Don Netoskie	RH	19	5-11	170	Fresh.		Martinsburg, W. Va.
33	Jack Hanley	FB	21	5-10	175	Junior	1 VL	Hartford, Conn.
34	Ray Callahan	FB	20	5-11	182	Soph.		Lebanon, Ky.
35	Ralph Paolone	FB	22	6-1	205	Senior	1 VL	New Castle, Pa.
36	Jim Gibson	FB	18	5-11	180	Fresh.		Louisville, Ky.
37	Bobby Walker	FB	17	6-0	182	Fresh.		Middlesboro, Ky.

# Campus Cleaners

## COLD STORAGE AND FURRIERS

KEystone 7403

6117 KIRBY DRIVE

HOUSTON 5, TEXAS

*The South's Largest and Most Modern Fur Storage Vault*

# Campus Cleaners

## COLD STORAGE AND FURRIERS

KEystone 7403

6117 KIRBY DRIVE

HOUSTON 5, TEXAS

*The South's Largest and Most Modern Fur Storage Vault*

60	Kenneth Paul	RG	195	5-11	20	Junior	1 VL	Houston
61	Eddie Rayburn	RG	220	6-2	19	Soph.	FL	Houston
62	LaMar "Skip" Lee	RG	205	6-0	21	Senior	1 VL	Huntsville
63	Lew Harpold	RG	198	5-10	20	Soph.	1 Sq.	Houston
64	Tommy Siragusa	RG	195	5-11	20	Soph.	FL	Houston
65	Jack Davis	LG	200	6-0	21	Soph.	FL	Palestine
66	Everard Terrell	LG	190	5-11	20	Soph.	1 Sq.	Wichita Falls
67	W. C. Treadway	LG	200	6-1	21	Senior	2 VL	Houston
68	Steve Tully	RG	200	5-11	19	Soph.	FL	Houston
70	John Hudson	LG	212	6-0	20	Senior	2 VL	Center
71	Orville Trask	RT	230	6-2	18	Soph.	FL	Houston
72	Max Schuebel	LT	210	6-2	21	Senior	2 VL	Houston
73	LaVon Cox	RT	235	6-2	20	Junior	1 Sq.	Galena Park
74	Bud Trenholm	LT	205	6-1	19	Soph.	FL	Irving
75	Layton Golemon	RT	230	6-4	19	Junior	1 VL	Kerrville
76	Harris Moore	LT	205	6-3	19	Soph.	FL	Houston
77	Jay Riviere	RT	200	6-0	20	Soph.	1 Sq.	Houston
78	Richard Chapman	LT	225	6-6	20	Senior	2 VL	Waxahachie
80	Dan Hart	LE	195	5-10	21	Senior	2 VL	Houston
81	Bob Woolbright	RE	195	6-2	19	Soph.	None	San Benito
82	R. E. Wortham	RE	185	5-11	20	Junior	1 Sq.	Klein
84	Marshall Crawford	RE	184	6-2	19	Soph.	FL	Lamesa
85	Don Costa	RE	194	6-0	20	Junior	1 Sq.	Houston
86	Jack Roady	LE	182	6-2	19	Soph.	FL	San Marcos
87	Robert Harrison	LE	180	6-0	19	Soph.	FL	Houston
88	Sammy Ward	LE	190	6-0	21	Senior	1 FL	Laredo
89	Blois Bridges	RE	187	6-1	21	Senior	1 VL	Grand Prairie
90	Lamoine Holland	LE	180	6-2	20	Junior	1 Sq.	San Antonio
91	Norman Kothman	RE	190	6-0	19	Soph.	FL	Menard

50	Tommy Adkins	C	21	6-1	197	Senior	2 VL	Corbin, Ky.
51	Leo Strange	C	20	6-0	195	Soph.	1 VL	Louisville, Ky.
54	Ken Williams	C	21	6-2	175	Soph.		Lebanon, Tenn.
55	Dave Kuhn	C	18	6-2	210	Fresh.		Louisville, Ky.
60	Stanley Walton	LG	20	5-11	195	Fresh.		Lexington, Ky.
62	Duke Curnutte	RG	20	5-10	185	Soph.	1 VL	Ashland, Ky.
63	O. E. Philpot	LG	20	6-2	190	Soph.		Lebanon, Ky.
64	Gayle Rouse	LG	18	6-0	180	Soph.		Burlington, Ky.
65	Ray Correll	LG	22	6-1	205	Senior	2 VL	Somerset, Ky.
66	Joe Koch	RG	19	5-10	182	Junior	1 VL	Louisville, Ky.
67	Neil Lowry	LG	21	6-0	192	Junior	1 VL	Youngstown, Ohio
71	Jim Schenk	RT	22	6-1	213	Senior	1 VL	Newark, N. J.
72	Bill Wheeler	RT	19	6-4	195	Soph.	1 VL	Pikeville, Ky.
74	Frank Petett	LT	20	6-2	180	Soph.		Tompkinsville, Ky.
75	Ken Lutz	LT	19	6-4	215	Soph.		Louisville, Ky.
76	Arvon Bivin	LT	20	6-2	197	Soph.		Louisville, Ky.
77	Tom Harper	LT	23	6-3	215	Senior	1 VL	Madisonville, Ky.
79	Harry Kirk	RT	20	6-4	195	Junior	2 VL	Mt. Sterling, Ky.
80	Steve Meilinger	LH	22	6-3	220	Senior	2 VL	Bethlehem, Pa.
82	Larry Hennessey	LE	22	5-8	170	Junior	2 VL	Paris, Ky.
84	Howard Schnellenberger	LE	19	6-2	190	Soph.	1 VL	Louisville, Ky.
85	Bradley Mills	RE	19	6-2	178	Soph.	1 VL	Lynch, Ky.
87	Jim Proffitt	RE	21	6-2	205	Senior	2 VL	Louisville, Ky.
89	Al Zampino	LE	22	6-0	185	Junior	2 VL	Philadelphia, Pa.

"The Official Watch for Timing this Game is Longines . . . The World's Most Honored Watch"

"The Official Watch for Timing this Game is Longines . . . The World's Most Honored Watch"



# THUMBNAIL SKETCHES OF RICE VARSITY PLAYERS OF 1953

(For statistical data, such as weight, height, home town, etc., see the roster on page 28)

(10) **SAMMIE BURK**—Rice's first service returnee of Korean War period... Sam was teletype operator for Air Force in California, also played on strong Hamilton Field grid team last fall... lettered as a soph in '50 at 175 pounds... now weighs 190... was called in as a reserve airman after '51 opener, so will be eligible for all but this year's debut with Florida.

(11) **HORTON NESRSTA**—The fans' favorite... popular with teammates and all who meet the scrappy "little rascal"... Nation's leader in punt returns last fall with 536 yards in 44 returns as safetyman, including two 60-yard-plus TD sprints... only weighs 147, but one of the best backs in Southwest.

(14) **MENDEL LAVIAGE**—Lack of height handicaps this stocky halfback (5-7) on defense, but he's a whiz as a runner... captured the fancy of the fans in spring game with his darting runs... local boy from San Jacinto High.

(15) **JOHN ZIMMERMAN**—Quarterback candidate from Cuero, handicapped a bit by lack of size, but eager for game duty... brilliant student, he made the Dean's List of Superior Students in the spring... excellent tennis player, will strive for a spot on net squad.

(19) **BOB GARBRECHT**—A teammate says Big Bob runs like a "wild-eyed bull"... a strong, fast runner this fellow could be a terror in platoon ball, but needs to improve on defense... he's the only non-Texas on the squad... home is New York City, but plans to live in Texas after he graduates.

(21) **ATCHLEY PROCTOR**—Best runner of the quarterbacks, and a sharp passer... threw a TD pass to Jack Day on first toss of varsity career last fall in TCU game... unusual first name is his mother's maiden name... he was an "unknown" in high school at tiny Class B DeKalb in East Texas where Cecil Grigg "discovered" him.

(23) **JOHN NISBET**—Known to one and all as "Pinky", he's the "personality kid" of the club... quick with the wisecracks to keep the boys loose... and a very competent quarterback... a Reagan ex, he lettered as utility man in baseball last spring.

(25) **BUDDY GRANTHAM**—The slender QB from Grand Prairie has been dogged by injuries much of varsity career... took a whirl at defensive half last fall, in addition to quarterback... teamed with end Blois Bridges to give Grand Prairie a fine passing team in 1949... Pleasant personality served him well as car salesman in his home town last summer.

(26) **LEROY FENSTEMAKER**—A key man in Rice grid picture as quarterback who directs the offense... adapted well to defense in spring... did a fine job replacing injured Dan Drake at mid-season last fall, and directed attack in Owls' "home stretch" drive for second place... was a boys' camp counsellor in the summer... probably can throw the ball farther than anyone in Southwest.

(31) **MORRIS STONE**—Rugged little battler from the Hill Country... had 246 minutes playing time as a soph... one of several fine halfbacks on the squad... a bit short for defense, but plays capably... played in all-star game in high school.

(32) **BILL GASKAMP**—A gifted runner with that natural ability to suddenly change pace... excellent speed... was dangerous punt returner in high school, so should do all right at safety... made a delayed debut as varsity player this fall... was a frosh star in '50, but went to Blinn Jr. College in home town Brenham in '51, required to lay out in '52 to regain eligibility at Rice.

(35) **BILL KELLER**—Hard running fullback who was all-state at LaVega High (Waco)... a soph, he figures to improve with experience... strong enough to be a linebacker, as fullbacks now must be under "two way football".

(36) **GORDON KELLOGG**—A defensive halfback regular in '52, he's one of several fine halfbacks on the squad... played offense in high school at always-strong Baytown... quiet, business-like, and well-mannered collegian.

(39) **STEVE CURRY**—"The Bull", not to be confused with a wrestler by the same name, hails from "north of the border down Mexico way" at Donna, Texas... hard runner and showed promise with frosh club last fall.

(40) **MAC TAYLOR**—State's top ground gainer as an all-state back with champion Lubbock High in '50, he's prolific with the yardage when he carries the ball... ineligible last fall because of grades, he bounced back to make all 2's and 3's last year and now is one of squad's better students... can play either left half or fullback, and hits hard as linebacker... first name is Mac NOT Mack.

(41) **JOHN FASELER**—Perhaps Rice's best all-around athlete, he was a starter in football, basketball, and baseball with the freshman teams last year... has good speed, and at 190 hits with power as a halfback.

(42) **DON WHITTAKER**—Strictly a linebacker last fall, and a good one, he's having to adapt to intricacies of offensive play this year... regretful Don's a senior as his time is short to develop into an all-around fullback... a hard tackler.

(43) **CARL JOHNSON**—One of the squad's fastest men, he's a two-year letterman track sprinter... played mostly on offense as a soph, even started one game, but last year his defensive halfback play late in season was important factor in team's success in November... was a star at San Jacinto in high school.

(44) **JERRY HALL**—Potentially was one of the finest running backs anywhere... tremendous speed (was second in 100-yard-dash in high school state meet) despite his size, 205 to 210 pounds... has a long way to go in learning defensive play as he missed all of spring drills because of an ankle injury... a fine punter, the Palestine all-stater gets the ball away unusually quick.

(45) **DAVID JOHNSON**—Nickname of "Kosse" comes from his birthplace... an all-around player, the former Baytown star was fourth leading ground gainer in SWC in '52, despite missing some action because of injuries... he's been the regular punter for two seasons... is a good linebacker... made most all-SWC second teams last year... one of the married men on the squad.

(47) **DICKY MOEGLE**—The kid from Taylor didn't turn 19 until after fall workouts began, although he's already had one varsity season of play... a good, all-around halfback, he's got running ability, good pass catcher, and able defensive player.

(48) **PAGE ROGERS**—One of several former Lamar High players on the Rice varsity... was a defensive standout with the frosh... served as Owl waterboy in late thirties.

(49) **GINO BIASATTI**—Two-year squadman from Dallas' Jesuit High, Gino is a hard runner who is working hard to learn defense in his senior year... injuries were his bugaboo as a soph and junior.

(50) **BILL PURVIS**—Big soph from LaVega has the size... needs work to improve speed... should continue to develop as he acquires experience.

(54) **DON WILSON**—Big, rugged center inherits the number made famous by the Owls' star linebacker, Don Rhoden, now graduated... all-stater Wilson from San Jacinto is recognized as one of SWC's best soph prospects for future stardom... weighed 230 as a freshman, Marine Platoon Leaders' summer training dropped him to 200, and he figures to play at about 215.

(55) **LEO RUCKA**—Rice fans contend Leo is the best center in Southwest... two years as a starting linebacker and some offensive service qualify him as a top notch player... one of the team tri-captains... the quiet type, he usually has little to say, but his action speaks louder than words on the field.

(56) **CARMON STEWART**—A husky young man from Palestine, Carmon was on the squad but didn't get in any games last fall... should see some duty as a reserve center this fall.

(59) **LARRY LUNDSTEDT**—Scrappy little guy from Austin switched from guard to center in the spring and was pretty impressive... he's quick, hits hard... needs a lot of work learning difficult new chore of linebacking on defense.

(60) **KENNY PAUL**—One of the top linemen in SWC last year as a soph, he bids for all-SWC honors this fall... played both offense and defense in '52 at guard... a good leader, Kenny has tremendous competitive spirit... was a star on one of Lamar's best clubs.

(61) **EDDIE RAYBURN**—Still another standout from Lamar, big Eddie is rapidly developing into a fine guard as a soph... a bulky 240 as a freshman, Marine reserve training in the summer helped trim him to a hard 220... a fine all-around athlete, he was a starter on the frosh cage team and is one of Houston's best softball pitchers.

(62) **LAMAR LEE**—"Skip" went to high school in Minnesota and Indiana, but his folks now live in Huntsville, so he calls himself a Texan, especially since he married a Rice co-ed... a fullback as a freshman, he switched to guard, and lettered as a junior last year.

(63) **LEW HARPOLD**—A powerfully built Lamar ex who went to Del Mar Jr. College a year, this barrel chested youth is strong and loves the rough going... he furnishes good "insurance" at guard as a valuable reserve.

(64) **TOMMY SIRAGUSA**—An all-state player at Lamar in '51, he and Don Wilson played together in the high school all-star game... was a regular guard with Rice frosh... good prospect for future as he acquires experience behind current veteran guards.

(66) **EVERARD TERRELL**—A North Texan from Wichita Falls, he's bidding to move up in the ranks among the guards... He was a squadman last fall, but didn't play in any games.

(67) **W. C. TREADWAY**—Although one of several married men on the squad, Treadway is the only father... and he's plenty proud of baby Stephen—not yet a year old... another San Jacinto ex on the squad, W. C. has played a lot of defense as a two-year letterman.

(68) **STEVE TULLY**—Another of the San Jacinto delegation at Rice, he's perhaps a year away and needs more experience... but don't count this boy out... he's a battler who will get there if hustle will do the job.

(70) **JOHN HUDSON**—A tri-captain, two year regular defensive tackle, and one of the SWC's best linemen... a guard on offense, he'll switch positions with Dick Chapman on defense and again play tackle when the opponents have the ball... played high school ball at Center, but his parents now live in Houston.

(71) **ORVILLE TRASK**—The big boy from San Jacinto inherits all-SWC tackle Bill Crockett's number and position, right tackle... one of squad's biggest at 235, he's a promising soph who with junior Layton Golemon provides plenty of heft at that position... Marine training hardened him, but his weight loss was negligible.

(72) **MAX SCHUEBEL**—A two-year defensive tackle regular, this guy can pop those ball carriers with the best of 'em... a Reagan High ex, he provides experience, size, and strength to the tackle department.

(73) **LA VON COX**—Another big boy from Galena Park, he's shown considerable improvement since last fall... furnishes plenty of size at tackle with his 230 pounds... played in high school all-star game in '51... was a catcher on varsity baseball squad last spring, and his twin brother, LaDon, was a regular outfielder.

(74) **BUD TRENHOLM**—A tackle candidate from Irving, near Dallas... played quite a bit with the frosh last fall.

(75) **LAYTON GOLEMON**—Huge (6-4 and 226) junior tackle who was a starter on offense as a soph... hails from Kerrville, home of several former Rice grid stars... easy going nature vanishes when ref blows that whistle... should be one of SWC's better linemen.

(76) **HARRIS MOORE**—Ambitious, hard working young soph from Reagan... likes to mix it up in scrimmage... looks almost thin, but weighs 210.

(77) **JAY RIVIERE**—A teammate of Lew Harpold at Lamar and Del Mar, he switched from guard to tackle this fall... looking good in spring drills... a fine golfer, he'll be a mainstay on the links team in the spring.

(78) **RICHARD CHAPMAN**—Received considerable notice from nation's scribes in pre-season reports on potential stars of '53, based on his selection as all-SWC lineman in '52... a great defensive player, he should be adequate on offense... majors in atomic physics and now in advanced work as senior... was president of junior class... one of the squad's giants at 6-6 and 225... from Waxahachie.

(80) **DAN HART**—highly capable senior end with plenty of steadying influence on the squad... was a guard as a soph, became a regular last fall as defensive end... one of the team's best conditioned men... cool and smart under pressure.

(81) **BOB WOOLBRIGHT**—a diamond in the rough... didn't even go out for frosh football, so woefully short of experience... but he has size and strength to be a fine end.

(82) **R. E. WORTHAM**—this lad could surprise a lot of folks... hobbled with a knee injury all last year, nobody knew much about him... a steady performer, he does a good job without attracting much attention... could be a big help with the scarcity of experienced ends.

(84) **MARSHALL CRAWFORD**—Very promising with the frosh last fall, this boy is a very rugged defensive end, capable enough on offense despite lack of real speed... he's a West Texan from Lamesa.

(85) **DON COSTA**—Switched from fullback to end at mid-season in '52 as a soph, saw brief game duty... provides size and strength at the position... one of the leading hitters on baseball team... went to St. Thomas High in Houston.

(86) **JACK ROADY**—Pulled a leg muscle while running to get in shape in late summer... could have challenged for a starting job were it not for injury if he could have played up to fine promise shown in spring drills... San Marcos boy... was a frosh starter in basketball, might help varsity in the cage sport.

(87) **ROBERT HARRISON**—Give this guy a little more heft and he'd make the club... good hustler, and hits very hard... switched from center to end last year.

(88) **SAMMY WARD**—One of three senior lettermen at ends who have to carry the load at important terminal posts... an all-stater at Laredo in high school, he's played some in two seasons, but still looking for that big year... an excellent artist, he aspires to a cartoonist career.

(89) **BLOIS BRIDGES**—A key man in the Rice grid picture... best pass catching end... offensive regular last fall after being sidelined with an injury most of soph season... has had no college experience as defensive end, but played it in high school at Grand Prairie.

(90) **LAMOINE HOLLAND**—Tall, quiet San Antonian with pretty good speed—he's a hurdler in track—and pass catching ability... if he can develop in blocking and tackling, he could help at end.

(91) **NORMAN KOTHMANN**—Husky soph from West Texas, Menard, he switched from guard to end in the spring... this is a year of learning in the new position, but he could help some in a pinch.

The Rice Athletic Association Would Appreciate Your Patronizing Our Advertisers

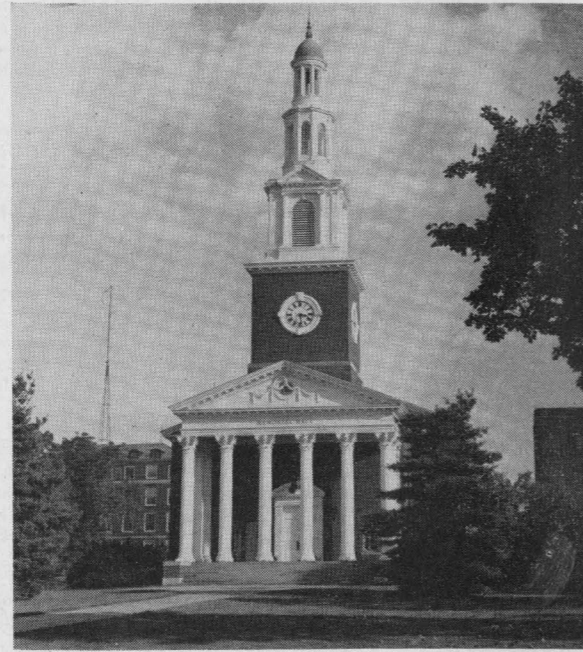
The Rice Athletic Association Would Appreciate Your Patronizing Our Advertisers





**KENTUCKY COACHING STAFF**

Standing—Clarence Underwood, Jim Owens,  
Head Coach Paul Bryant, and Ermal Allen.  
Kneeling—Jerry Claiborne, Phil Cutchin and Pat James.



**Memorial Hall**  
containing an auditorium seating about 1100

## UNIVERSITY OF KENTUCKY



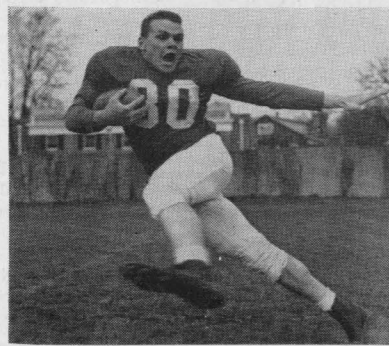
Dr. Herman L. Donovan, President



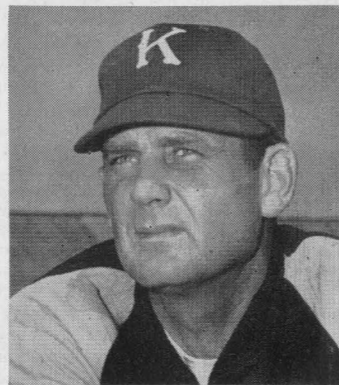
Administration Building



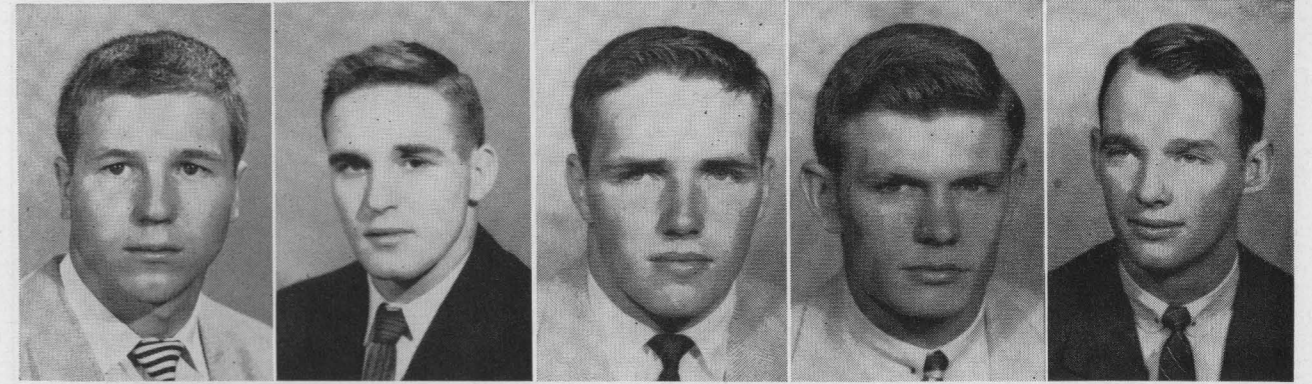
A. Shively, Athletic Director



Steve Meilinger, Back



Paul Bryant, Head Coach



29—Joe Platt      26—Dick Mitchell      22—Dick Moloney      17—Dick Shatto      16—Herb Hunt

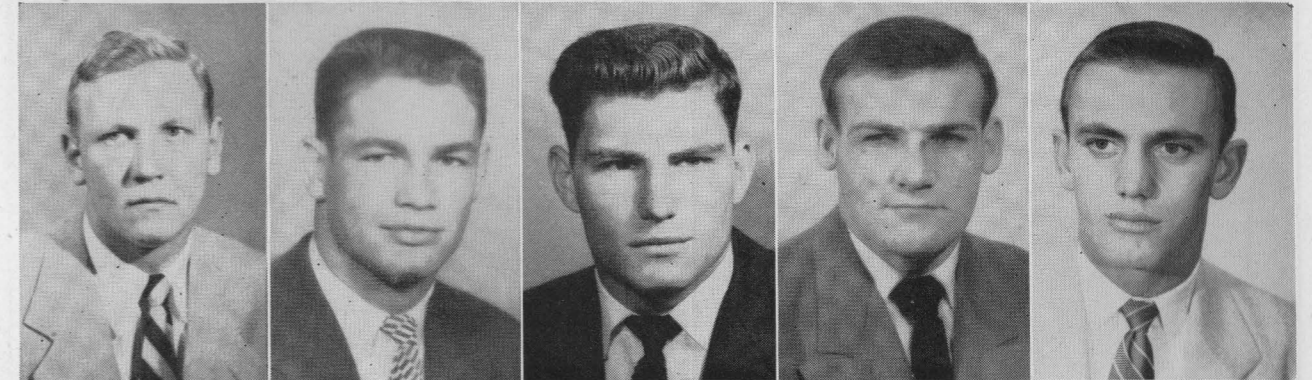


62—Duke Curnutte      51—Leo Strange      50—Tommy Adkins      35—Ralph Paolone      31—Tom Fillian

## KENTUCKY WILDCATS



77—Tom Harper      76—Arvon Bivin      67—Neil Lowry      66—Joe Koch      65—Ray Correll



87—Jim Proffitt      85—Bradley Mills      84—H. Schnellenberger      82—Larry Hennessey      79—Harry Kirk

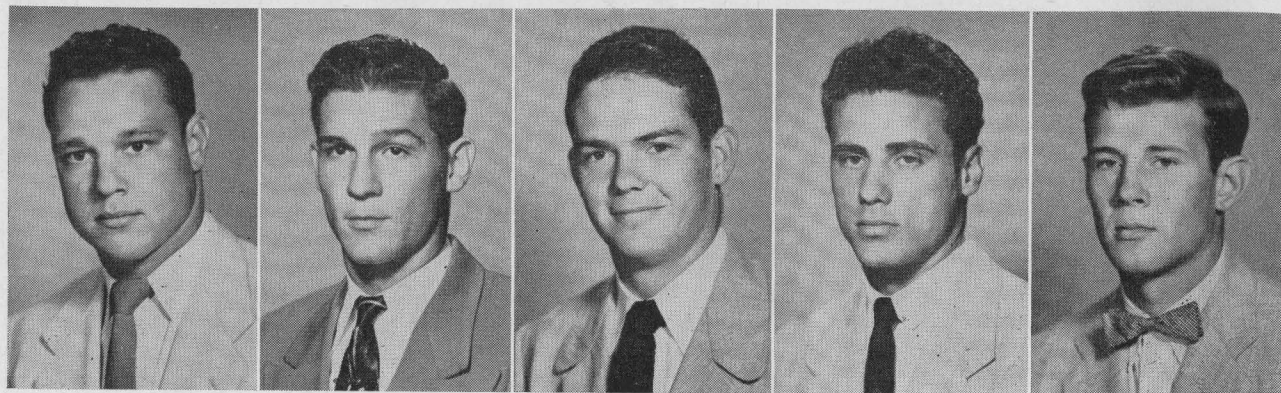


# PEIDIEN IRON & STEEL CO.

ESTABLISHED 1890

WHOLESALE

HOUSTON, TEXAS



81—Bob Woolbright    82—R. E. Wortham    84—Marshall Crawford    85—Don Costa    86—Jack Roady

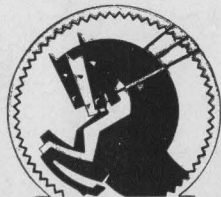
(SEE THUMBNAIL SKETCHES ON PAGES 30 AND 31)

## RODEO CAFE

Dickinson, Texas

for . . .

Office Forms • Folders  
Booklets • Color Printing  
Letterpress and Offset  
One-Time Carbon Forms  
Continuous • Fanfold  
Register Forms



THE REIN CO.

Victor 2611

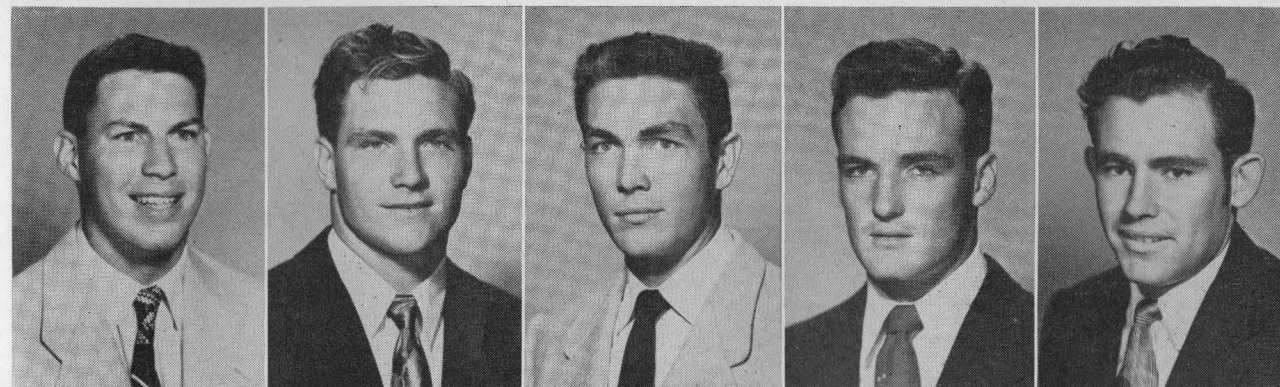
Represented for National Advertising by DON SPENCER COMPANY, INC., 271 Madison Ave., New York 16, N.Y.

## Follow the Owl Cagers, 12 Home Games and S.W.C. Tourney Here

When the football season ends, Rice Institute sports fans will not lack for major college sports entertainment. The Owls are expected to field an outstanding basketball team that will play twelve games in the spacious and well-appointed Rice Gym. And a special winter feature sees Autry Court at the gym the site of the Southwest Conference tournament December 28-30 in which all seven SWC teams and the University of Alabama will appear, with a total of twelve college games in a three-day period. Information on tournament tickets may be obtained from the Rice athletic business office at the Rice Gym, phone KE-1661.

The Owls also will play 12 games on the road, including appearances in New York City, New Orleans, Knoxville, and Nashville with most of the games during the early part of Christmas holidays.

Cage coach Don Suman will build his squad with eight lettermen returning from the team that tied for second in the SWC last winter, with Gene Schwinger and Don Lance both unanimous all-Conference selections. Schwinger also received mention in several All-American squad listings as he led the SWC in scoring.



87—Robert Harrison    88—Sammy Ward    89—Blois Bridges    90—Lamaine Holland    91—Norman Kothman

(SEE THUMBNAIL SKETCHES ON PAGES 30 AND 31)

The "Fresh Up"  
Family Drink!



You like it...  
it likes you

BUY A CASE TODAY!

The Rice Athletic Association Would Appreciate Your Patronizing Our Advertisers



The Best FRIED CHICKEN in Town . . . .

Famous throughout the Southwest for its tenderness and flavor. Fast service, low prices. Box orders to take out at no extra cost.

6441 SOUTH MAIN in HOUSTON

**Youngblood's**  
FRIED CHICKEN

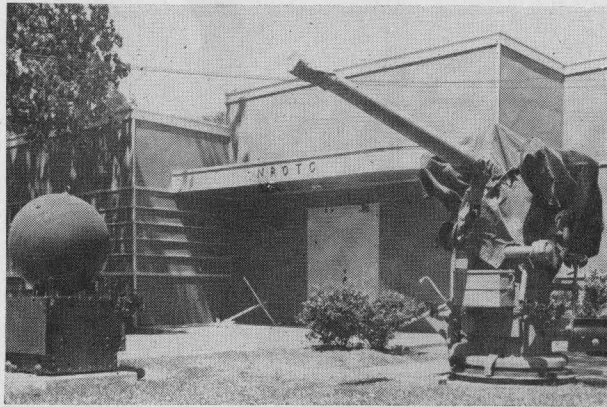
At the games it's . . . .

**JASMINE FRANKS AND  
HAM SANDWICHES**

(Always Government Inspected)

HOUSTON PACKING COMPANY • 3301 NAVIGATION • PReston 2361

*Campus Scenes*  
OF THE RICE INSTITUTE



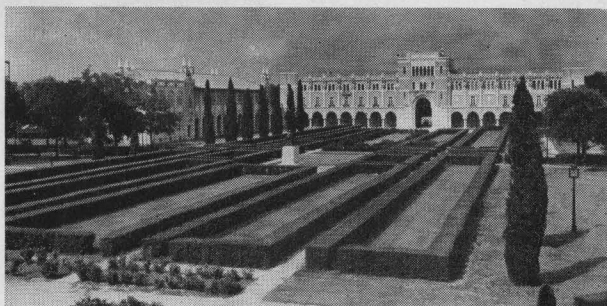
NAVY BUILDING



PHYSICS BUILDING



CHEMISTRY BUILDING

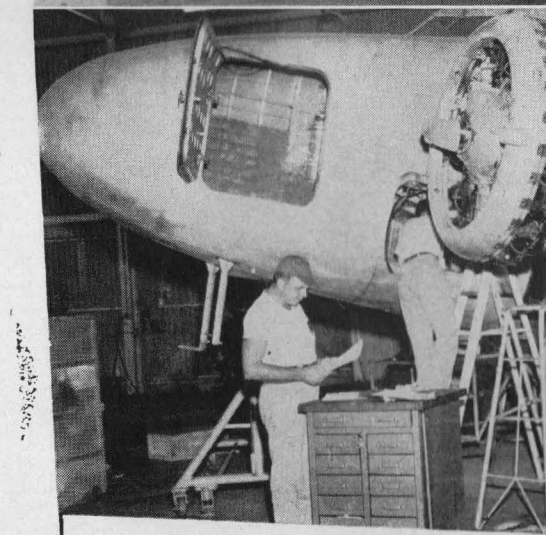
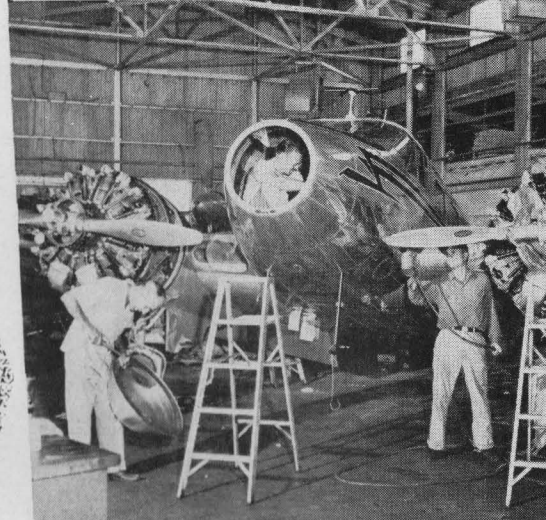
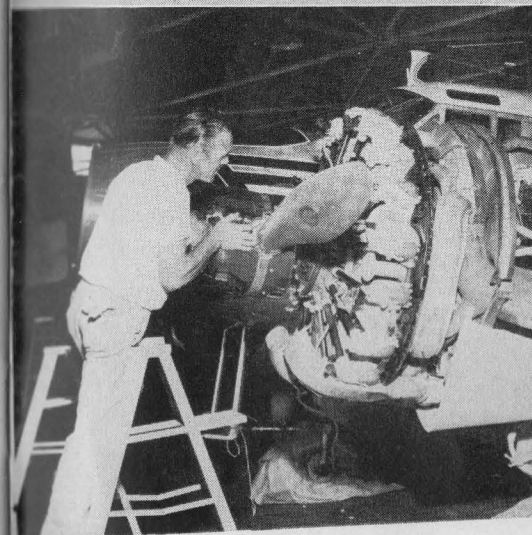


ACADEMIC COURT

Represented for National Advertising by DON SPENCER COMPANY, INC., 271 Madison Ave., New York 16, N.Y.

Name your problem . . . . .

**REED** has the solution



**LINE SERVICE**

No time wasted here! When you roll up to the J. D. Reed Company ramp your service needs will receive immediate attention and you will be on your way in a flash.

**MAJOR OVERHAULS**

Experience counts! Our factory trained staff, using the finest and most complete equipment, is prepared to put your aircraft in like-new condition in minimum time and at reasonable cost.

**PROPELLER and ENGINE SERVICE**

The best is what you want! When propeller or engine service is needed make sure you are receiving the expert workmanship and technical know-how always available at the J. D. Reed Company.

**EXECUTIVE CONVERSIONS**

Designed for utility, engineered for performance by Reed! Our staff will custom design your executive conversion to best serve the requirements for which it is intended.

The extensive facilities of the J. D. Reed Company were developed to serve your every need in aviation. Over twenty years of service to owners of every type aircraft is your assurance that REED has the experience and facilities to cope with any aviation problem.

Our exacting standard and precise specifications have set a new high standard in workmanship and materials. We welcome your most complex problems and will find an economical solution. Next time you have a problem why not get the right answer from us?

**J.D. REED** **CO., Inc.**  
SALES SERVICE  
**Beechcraft**  
**DISTRIBUTOR**  
MUNICIPAL AIRPORT  
HOUSTON, TEXAS



# CAMEL

*America's most popular cigarette!*



*So Mild -  
So Flavorful!*