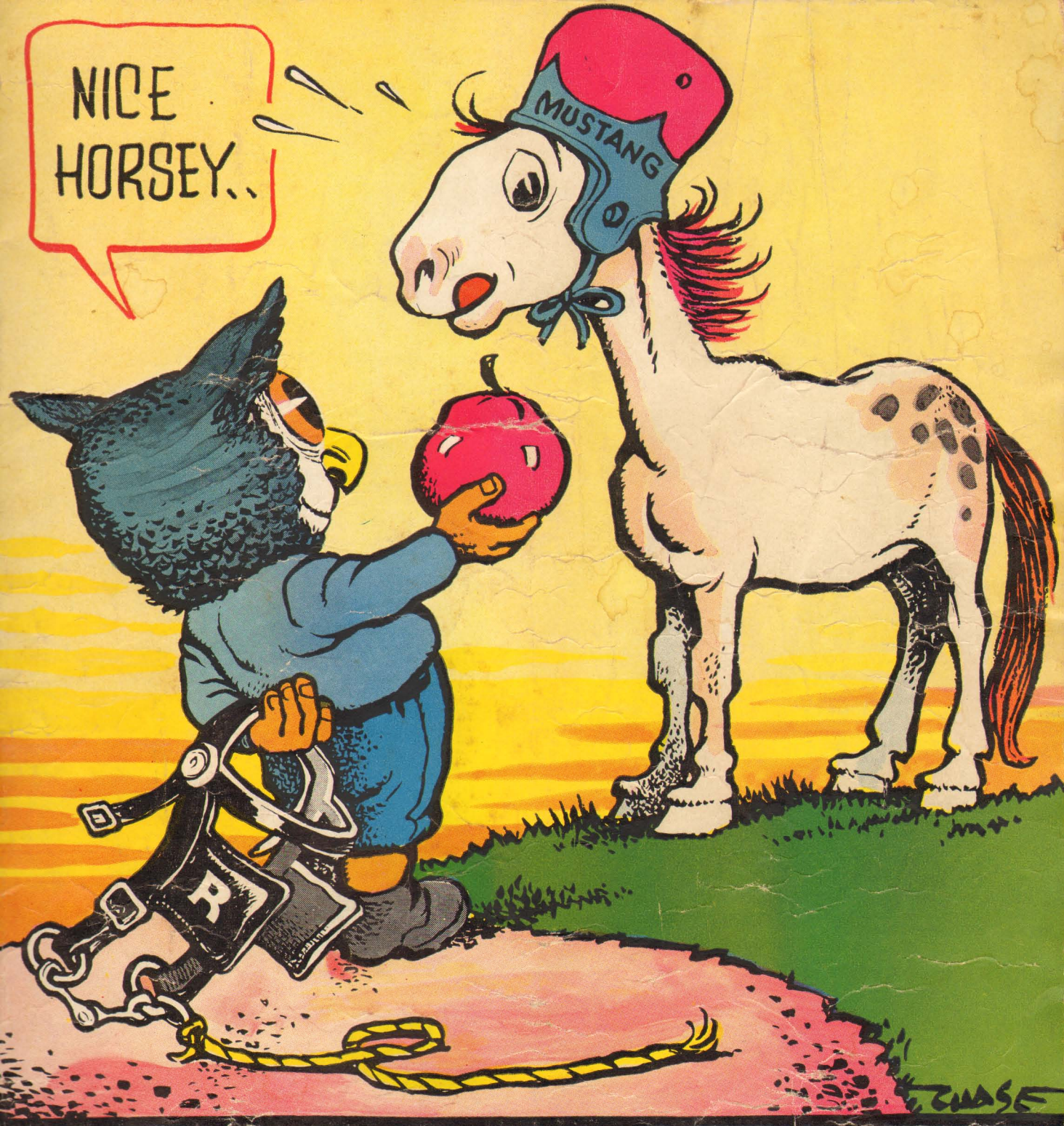


NICE
HORSEY..



The SMU Game

RICE CAMPUS



OCTOBER 18, 1952

OFFICIAL PROGRAM — TWENTY FIVE CENTS



DOROTHY COLLINS,
"The Sweetheart of Lucky Strike,"
says:

Be Happy-
GO LUCKY!

**LUCKIES
TASTE
BETTER!**



L.S./M.F.T.-Lucky Strike Means Fine Tobacco

COPR., THE AMERICAN TOBACCO COMPANY

**ONLY ONE
CAN BE
BEST**

*Taste Tru-Ade
and judge for yourself*



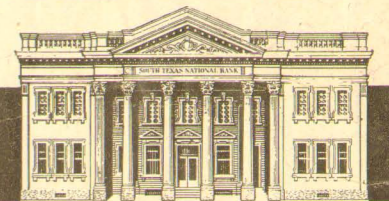
THE
Natural
SOFT DRINK



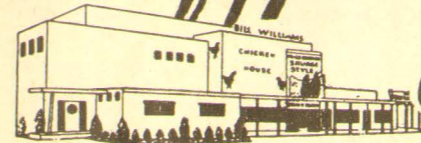
SOUTH TEXAS NATIONAL BANK

Progressive Banking Service Since 1886

213 MAIN STREET • HOUSTON, TEXAS
MEMBER FEDERAL DEPOSIT INSURANCE CORPORATION



Satisfy Your Hunger at



6515 SOUTH MAIN
OPPOSITE RICE INSTITUTE

Bill Williams

GOOD FOOD TO FIT YOUR APPETITE AND YOUR POCKETBOOK

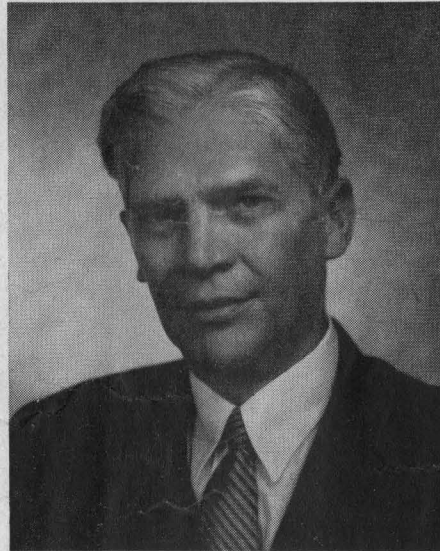
The Rice Athletic Association Would Appreciate Your Patronizing Our Advertisers

BOARD OF GOVERNORS OF THE RICE INSTITUTE

TRUSTEES



GUS S. WORTHAM



GEORGE R. BROWN
Chairman



LAMAR FLEMING, JR.



WILLIAM A. KIRKLAND



J. NEWTON RAYZOR



DR. FREDERICK R. LUMMIS



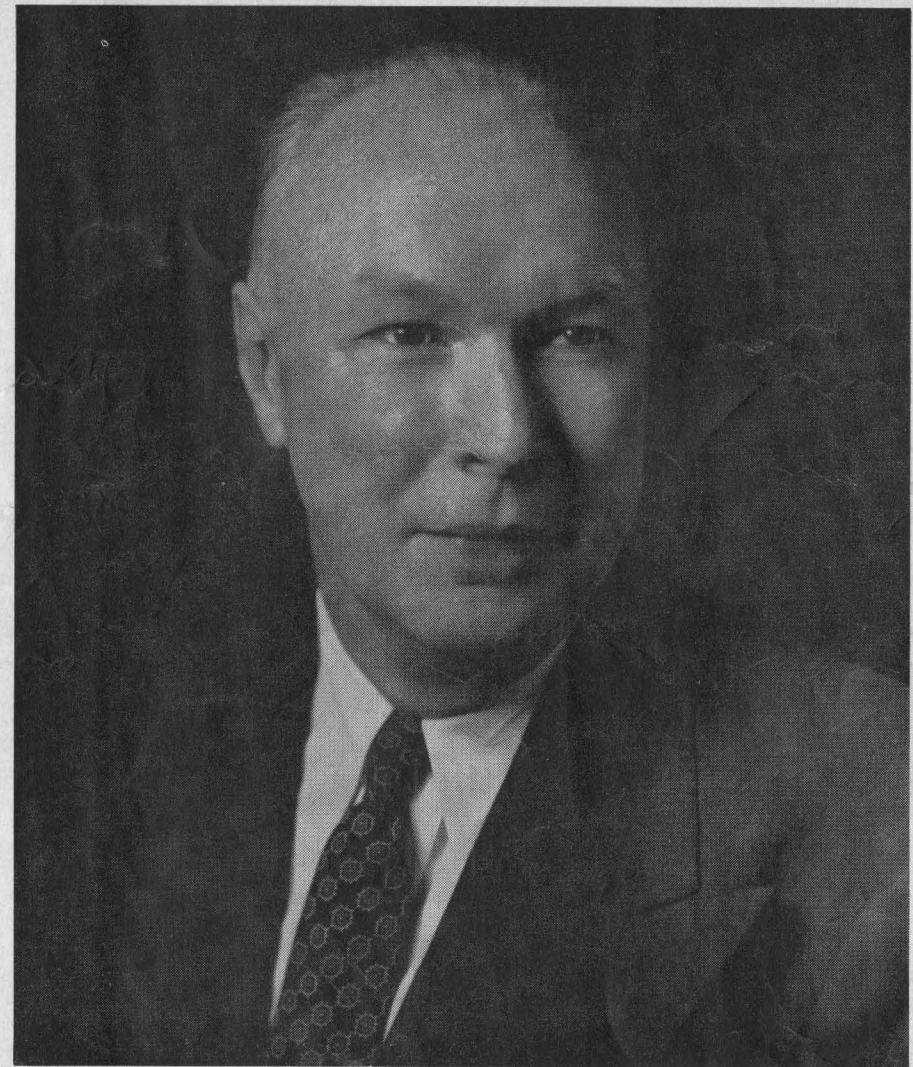
JOHN S. IVY

TERM MEMBERS

HERBERT ALLEN
ROBERT P. DOHERTY

FRANCIS T. FENDLEY
H. MALCOLM LOVETT

ROBERT H. RAY
HARMON WHITTINGTON



DR. WILLIAM V. HOUSTON
President, The Rice Institute

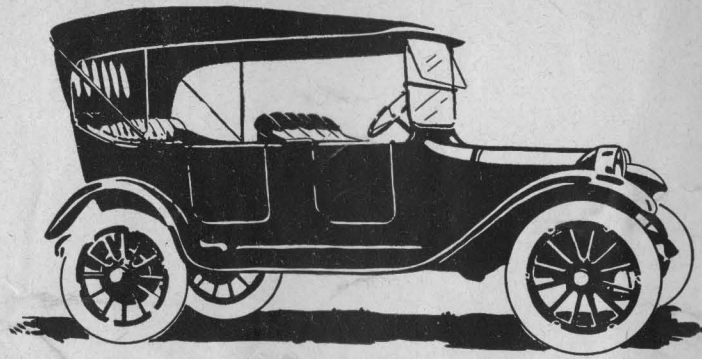
Just forty years ago the first class of freshmen entered the Rice Institute. That first freshman class organized a football team and played a schedule involving some satisfying victories along with some overwhelming, if not spectacular, defeats.

Today the Rice Institute welcomes you, its guests, to a stadium which bears little resemblance to the ball park in which our first games were played. Our physical facilities have grown with the city of Houston and because of the interest and help of its citizens.

You are all invited to spend a little time looking around the rest of our campus. Some of you may not have seen the Fondren Library, Wiess Hall, or the Abercrombie Laboratory. We hope you will visit them.

In particular, we hope you enjoy the game you have come to see. May you not be disappointed in its outcome more than half the time.

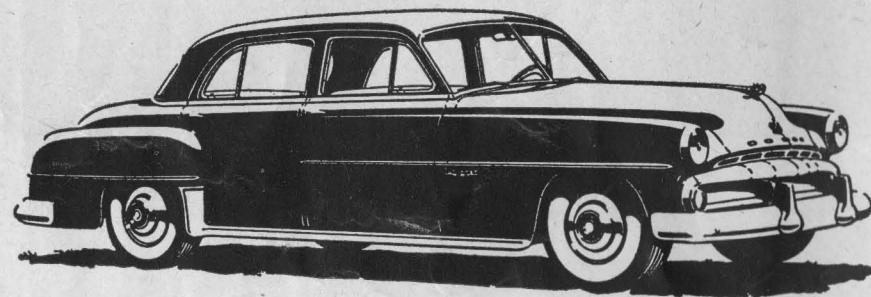
WILLIAM V. HOUSTON



38 YEARS

of automotive service to Texans

Choose a beautiful new DODGE
from a dependable dealer . . .



Jackson Motors, Ltd.

ALBERT H. BERRY

JACK W. JACKSON

Texas' Oldest Dodge and Plymouth Dealer

2404 South Main

• HOUSTON



Best wishes, always
to the BLUE and GRAY!

Cameron

IRON WORKS, INC.

HOUSTON

THE RICE INSTITUTE ATHLETIC COACHING STAFF



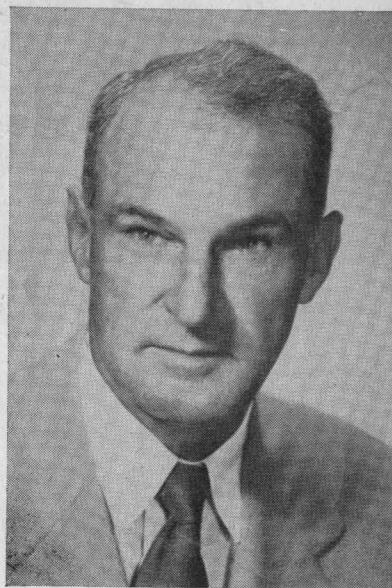
JOE DAVIS
Line Coach

CECIL GRIGG
Backfield Coach

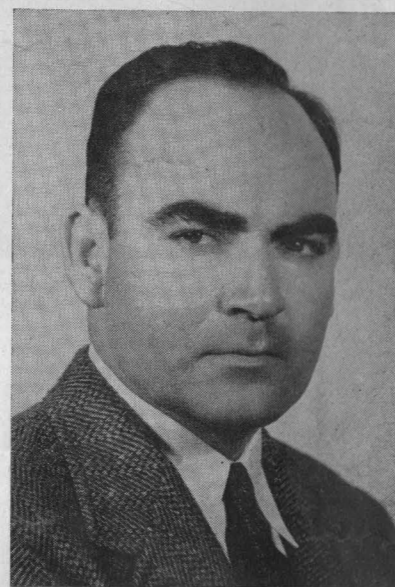
A. M. BALE
End Coach

DELL MORGAN
Asst. Coach

CHARLES MOORE
Freshman Football Coach
Freshman Basketball Coach



JESS NEELY
Head Football Coach
Athletic Director



EMMETT BRUNSON
Track Coach
Bus. Mgr. of Athletics



HAROLD STOCKBRIDGE
Asst. Coach

DON SUMAN
Basketball Coach

EDDIE WOJECKI
Head Trainer

CARROLL MARTIN
Office Manager

BILL WHITMORE
Sports News Director

OFFICIAL WATCH FOR THIS GAME

Longines
The World's Most Honored Watch

ACCEPTED AS OFFICIAL WATCH
FOR TIMING
CHAMPIONSHIP SPORTS EVENTS
IN ALL FIELDS ALL OVER THE WORLD



Product of
Longines-Wittnauer Watch Company

As constructors of the Rice Stadium, we take great satisfaction from the contests played here—not from the final score, but from the knowledge that on this field there is rivalry without rancor, defeat without dishonor, and victory without tyranny.

In this great game look not for the shoddy, the dishonest, the shirker and the fraud, for here he cannot survive.



Brown & Root, Inc.

Engineers — Constructors
HOUSTON

TOUCHDOWN!



Touchdown or take off with a Beech and you'll know you've got a champion on your hands. In Beech's Executive Transport and Bonanza models you'll find the World's finest airplanes designed specifically to meet the requirements of leading executives who appreciate the importance of air travel in modern industry.

To match these unexcelled planes, J. D. Reed has built a superior sales and service organization in keeping with the high standards demanded by those who accept only the best.

J.D. REED **CO., Inc.**
SALES SERVICE
Beechcraft
DISTRIBUTOR

 **HOUSTON**
Municipal Airport

TONIGHT'S GAME

BY BILL WHITMORE
Rice Sports News Director

When the Owls and Ponies square off on the Rice Stadium gridiron tonight, it will mark the 32nd meeting of these old Southwest Conference rivals. This game opens the league competition for each team.

Not once have Rice and S.M.U. played to a tie. If the Owls can upset the Mustangs this evening, the all-time record of the two schools in football would be 16 victories apiece with no deadlocks.

Both clubs enter this fracas with early season records scarred by intersectional losses to powerful foes. But Rice and S.M.U. have played top brand football for many years, and it can be figured one or the other is about due to break out of a slump and get a big jump in the race towards the SWC title with an important debut victory.

S.M.U. is given the nod in most quarters because the Ponies had their slump early and seem to be on the rebound. After dropping a 14-7 game to Duke in which the Blue Devils scored in the closing seconds to win, S.M.U. then fell victim to another of the nation's top teams in Georgia Tech, a 20-7 victor. But the Mustangs rallied last week to look impressive in whipping Missouri of the Big Seven 25-7.

The Owls, meanwhile, started off by thumping Texas Tech 34-7 in a very impressive fashion. But L.S.U. surprised with a 27-7 triumph over the Owls, and U.C.L.A.'s super-duper defense

throttled the men of Rice, 20-0, last Saturday in Los Angeles.

So, tonight's game not only determines which team gets over a big hurdle in conference play, but whether S.M.U. or Rice is the more able to react from early disappointment to get back in the thick of the grid battle.

There should be plenty of fireworks in this game, for the players are available who can produce them. S.M.U. bring to town a host of well known backs, including veterans Benton Musslewhite, Bill Forester, and Jerry Norton. And there are several sophomore aces, including Malcolm Bowers, Duane Nutt, and Port Arthur's fabulous Frank Eidom. The latter, however, is on the doubtful list to play because of an injury.

The Owls need this one bad, and will be out to corral the Ponies with a rock-ribbed defense up front and hopes for improvement in the downfield secondary. The Ponies won't face a better linebacker all season than the Owl's terrific co-captain, Don Rhoden. The 19-year-old senior played a sensational defensive game against U.C.L.A., as he piled up tackles all over the field.

Dan Drake, Buddy Grantham, and Leroy Fenstermaker took turns at running the offense at quarterback last week. It will be interesting to see who manages to get the best job done tonight.

If previous records indicate a trend, there should be some scoring tonight. Last fall the Owls walloped S.M.U. 28-7 in Dallas, in '50 the Mustangs won 42-21 here, and in '49 Rice won 41-27.

W. Cecil Sisson Mortgage Company

Complete Financial Service

Roy Bean, Loan Officer

402 Rusk Building

Represented for National Advertising by DON SPENCER COMPANY, INC., 271 Madison Ave., New York 16, N.Y.

Spring Air

"Lastic Foam"

MATTRESSES and BOX SPRINGS

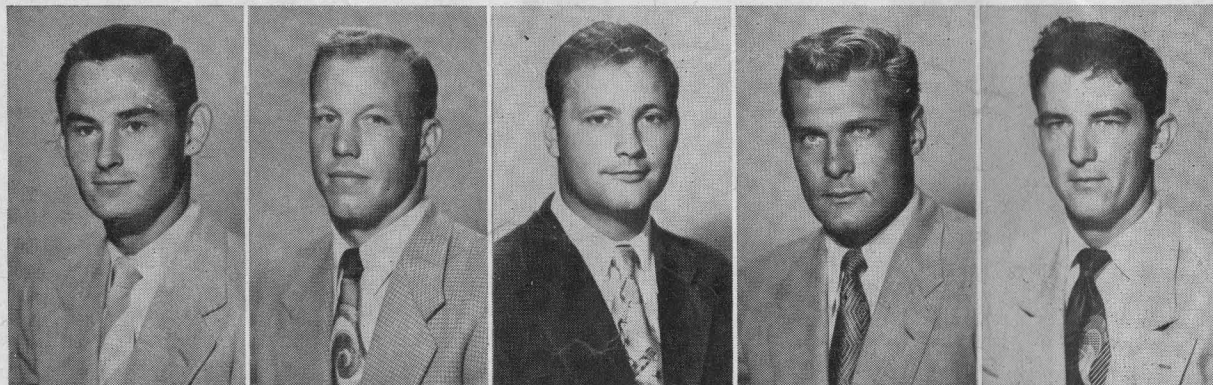
America's Finest Bedding Equipment

PARKER BEDDING COMPANY

FREDERICK PARKER

HOUSTON

JOEL PARKER



11—Horton Nesrsta 15—Dickie Bob Haddox 16—Bobby Warren 19—Bob Garbrecht 20—Oree "Buzzy" Bryan

Welcome to * FOOTBALL HEADQUARTERS



*That means:

welcome under
the Humble sign in
your neighborhood.

HUMBLE

You're always welcome under the Humble sign—every day in the year. But right now you'll find your neighborhood Humble dealer's station gaily decorated with Southwest Conference school colors in honor of the season, and provided with timely information about Humble's football broadcasts.

Come the weekends, your neighbor under the Humble sign invites you to be his guest at Humble's broadcasts of the games you can't attend. Enjoy this neighborly hospitality right in your own living room—tune in the Southwest Conference game, or games, of your choice.

When you drive to a game (and plan to see as much football as you can; there's no substitute for the glamor and excitement you find only at the stadium) stop for service at the Humble signs along your route . . . Welcome to Football Headquarters!

HUMBLE OIL & REFINING CO.

OFFICIAL SIGNALS ADOPTED BY NATIONAL COLLEGIATE ATHLETIC ASSOCIATION

For the best signal in TV...

see



BLACK-DAYLITE TELEVISION



Huge screen, beautiful compact cabinet and on-the-spot picture realism—it's G-E Model 21T4. Go into a huddle with your dealer—fast. Ask him to demonstrate the features.

When you can't get to the game,
the next best thing is G-E Model 21T4!



1. OFFSIDE



2. ILLEGAL POSITION OR PROCEDURE



3. ILLEGAL MOTION OR SHIFT



4. DELAY OF GAME



5. PERSONAL FOULE



6. ROUGHNESS AND PILING ON



7. CLIPPING



8. ROUGHING THE KICKER



9. UNSPORTSMANLIKE CONDUCT



10. DEFENSIVE HOLDING



11. ILLEGAL USE OF HANDS AND ARMS



12. INTENTIONAL GROUNDING



13. ILLEGALLY PASSING OR HANDING BALL FORWARD



14. FORWARD PASS OR KICK CATCHING INTERFERENCE



22. TIME-OUT



21. SAFETY



20. TOUCHDOWN OR FIELD GOAL



19. BALL DEAD; IF HAND IS MOVED FROM SIDE TO SIDE: TOUCHBACK



18. CRAWLING, HELPING THE RUNNER OR INTERLOCKED INTERFERENCE



17. INCOMPLETE FORWARD PASS, PENALTY DECLINED, NO PLAY OR NO SCORE



16. BALL ILLEGALLY TOUCHED, KICKED OR BATTED



15. INELIGIBLE RECEIVER DOWN FIELD ON PASS

GENERAL ELECTRIC SUPPLY COMPANY

1312 LIVE OAK

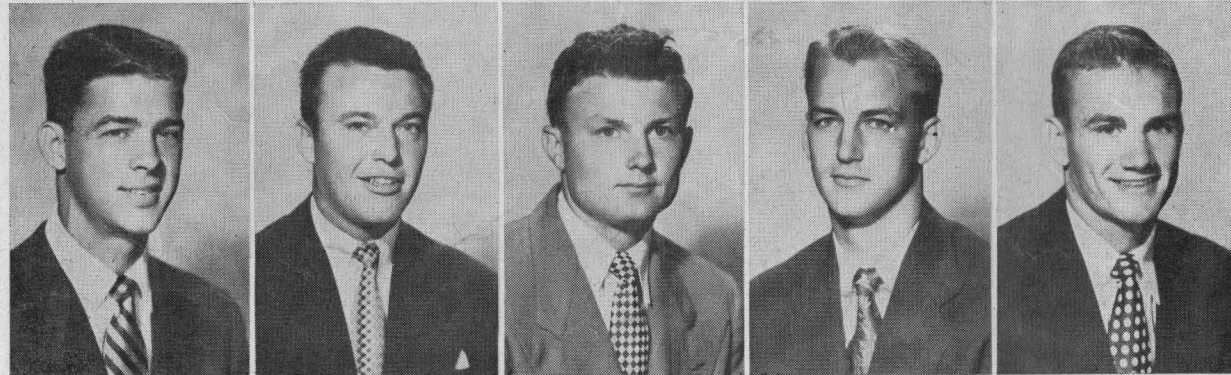
HOUSTON, TEXAS



FOLLOW YOUR TEAM TO THE GAME

Fly **TRANS-TEXAS**
Airways

CALL TRANS-TEXAS
OR YOUR LOCAL
TRAVEL AGENT



21—Athley Proctor 22—Billy Ed Daniels 23—Bill Gaskamp 24—Dan Drake 25—Buddy Grantham

We are Proud . . .

Of our many young depositors who are starting now to acquire the independence of a savings account—the satisfaction of planned financing.

For over 30 years it has been our policy to extend to our customers a friendly understanding of their financial responsibilities. We invite you to drop by 712 Main to talk with us about our Free Services, Savings Plans, Loan Plans, Trust Facilities and Normal Charge Services.

Member Federal Deposit Insurance Corporation

National Bank of Commerce
OF HOUSTON
"The Bank of Courtesy"



WINNING COMBINATION . . .

Dependability and economy are the star performers on the United Gas service team. Dependability plays an important part throughout every season of the year . . . making it possible for your family to constantly enjoy the comfort and convenience offered by fine gas appliances. And because your natural gas service is so economical, it represents the wisest fuel investment you can make in your home, your business or your industry. United Gas is proud to have the opportunity of making this important gas service available to you and your neighbors.

For The Best In Gas Service
Call . . . Blackstone 0271



UNITED

GAS

THE BIGGEST BARGAIN IN YOUR HOME TODAY — PHONE AT 5111
87 Years of Dependable GAS Service to Houstonians



The Shamrock

HOUSTON

"America's Magnificent Hotel"

For the
**All-American
Week-End**



Make The Shamrock your headquarters hotel — where gracious hospitality and a warm welcome await you. You'll enjoy the comfort, the faultless service, the superb cuisine, the luxurious facilities that only The Shamrock affords its guests.

Cavalcade of Stars

There's always exciting big-name entertainment in The Shamrock's famed Emerald Room . . . stars of stage, radio and motion pictures appear continually, in person, in the Cavalcade of Stars. You'll enjoy your "night out" in The Shamrock's supper clubs.

GLENN McCARTHY, President

M. JACK FERRELL, Managing Director

Foote's Cafeteria

Houston's Finest Suburban Dining Room

2 Blocks West of Stadium

Continuous Service 11:00 A.M. to 8:30 P.M.

2407 RICE BOULEVARD

7 Days a Week

CONSOLIDATED CHEMICAL INDUSTRIES INC.

Heavy Chemicals for Industry

640 MELLIE ESPERSON BLDG.
HOUSTON 2, TEXAS

NAME BRAND
Sporting Goods

OPEN DAILY 9 A.M.-6 P.M.

HOUSTON SPORTS SHOP

4717 Main Street, Houston • Telephone KE-8660, JU-2131



26—Leroy Fenstermaker 31—Morris Stone 35—Bill Frazier 36—Gordon Kellogg 39—Don Costa



40—Tommy Lynch 42—Don Whittaker 43—Carl Johnson 45—David Johnson 47—Dicky Moegle



You,
Your Great Southerner
and Life Insurance

are an unbeatable combination for
winning financial independence for
your family and yourself.

GREAT SOUTHERN
Life Insurance Company



4310 Dunlavy • Houston 6, Texas



**EVERYBODY'S
YELLING FOR**

**THE BEER WITH THAT
SMOOTH, MILD FLAVOR**

Yes Sir, — here's a beer to cheer — Southern Select! The beer with that smooth, mild flavor! It has the extra point that makes the difference — It's Pilsenized — light and bright — always tastes just right! One taste of this wonderful golden dry brew and you'll yell for the "Sparkle beer", too!

ITS PILSENIZED — HAS SPARKLE

Southern Select BEER

GALVESTON-HOUSTON BREWERIES, INC., GALVESTON, TEXAS

*Enjoy
the Finest Steaks
Obtainable*

YOU SELECT the steak of your choice from our gleaming Steak Bar;

YOU BRAND IT as you wish it prepared: "R" for rare, "M" for medium, etc.

WE COOK IT on our grill, or our brand new charcoal broiler, as you prefer.

ERNEST COKER'S

Ye Old College Inn

6545 SOUTH MAIN

LY-6484

Serving Hours: 5 p.m. to 11 p.m. daily
Noon til 9 p.m. Sunday

CLOSED TUESDAY

Rice Freshman Football

Two big home games here at the Rice Stadium feature the five-game schedule of the 1952 Rice Institute freshman football team. On Friday night, October 17th, the Owlets play the S.M.U. Colts and on Friday night, October 24th, they entertain the University of Texas first year team.

Several outstanding high school players of 1951 are among the squad learning the intricacies of the Rice grid system under the tutelage of head coach Charley Moore and Harold Stockbridge.

Tickets to the two big home games of the freshman team may be purchased at the ticket window at the Rice Gymnasium.

Here is the complete schedule for the Owlets for '52:

- 3 October (Friday) 2 p.m.
T.C.U. Freshmen at Fort Worth
- 10 October (Friday) 8 p.m.
Del Mar Junior College at Corpus Christi
- 17 October (Friday) 8 p.m.
S.M.U. Freshmen at Rice Stadium
- 24 October (Friday) 8 p.m.
Texas Freshmen at Rice Stadium
- 6 November (Thursday) 2 p.m.
Texas A. & M. Freshmen at College Station

UNIVERSAL

PACKING & GASKET CO.

Houston Owned
and Operated



Home of Universal, where packings and gaskets are manufactured for every industrial need.



"The Official Watch for Timing this Game is Longines . . . The World's Most Honored Watch"

Refreshing



RICE INSTITUTE (Offense)

BY POSITIONS

LE Bridges 89	LT Timmons 69	LG Little 61	C Moore 56	RG Lee 62	RT Crockett 71	RE Day 80
---------------------	---------------------	--------------------	------------------	-----------------	----------------------	-----------------

QB
Drake
24

LH
Daniels
22

RH
C. Johnson
43

FB
D. Johnson
45

S. M. U. (Defense)

BY POSITIONS

LE Ripsey 84	LT Dean 83	LG Turk 66	RG Partee 61	RT Riley 63	RE Gunlock 50
--------------------	------------------	------------------	--------------------	-------------------	---------------------

LLB
Case
86

RLB
Forester
38

LH
Walker
20

RH
D. Miller
36

S
Crisler
26

See line-ups on page 20 for S. M. U. offense and Rice defense



COPYRIGHT 1952, COCA-COLA COMPANY

HOUSTON COCA-COLA BOTTLING COMPANY ★ 2800 BISSONNET

FOR YOU

FIRST PREMIUM QUALITY CIGARETTE REGULAR AND KING-SIZE!

S. M. U. SQUAD

No.	Name	Pos.	Age	Ht.	Wt.
14	Stollenwerck '54	B	19	5-9	160
15	Cox '55	E	20	6-3	180
17	Mills '54	B	21	5-11	170
18	J. Crawford '54	B	20	5-11	185
19	Donovan '54	B	21	6-0	180
20	Walker '53	B	22	6-1	175
21	Musslewhite '53	B	21	5-11	170
22	Hunt '55	B	20	5-11	182
24	Kilgore '55	B	20	5-11	185
25	Moore '54	B	21	6-0	185
26	Crisler '54	B	19	6-0	180
33	Fields '55	B	19	5-9	175
35	Nutt '55	B	19	5-10	180
36	D. Miller '54	B	20	6-3	196
37	Hansen '54	B	21	6-2	190
38	Forester '53	B	20	6-3	220
40	Eidom '55	B	20	5-10	185
41	Bowers '55	B	19	6-1	185
43	Pace '55	B	20	6-0	175
44	Norton '54	B	21	6-0	185
45	Gillis '54	B	21	6-0	180
47	Kelley '55	B	20	6-0	175
50	Gunlock '54	E	21	6-0	195
51	O'Neal '55	C	19	5-11	195
52	Fox '54	C	20	6-0	190
53	Hailey '55	C	20	6-3	205
54	Cole '54	C	20	6-0	190
56	Turpin '55	C	19	6-0	200
57	Landers '54	T	21	6-4	225
58	B. Crawford '55	G	20	6-3	195
61	Partee '53	G	22	6-1	205
62	Lafitte '54	G	21	5-11	194
63	Riley '53	G	22	5-11	205
64	Basquez '55	G	20	5-11	190
65	Walden '54	G	21	6-1	225
66	Turk '53	G	23	6-1	235
67	Winters '55	G	19	5-11	195
68	Ligon '53	G	20	5-9	210
69	Stewart '55	T	18	6-0	215
70	Mayo '54	T	21	6-2	185
71	Clem '54	T	20	6-1	200
72	Hairston '55	T	18	6-2	205
73	Cadwallader '53	T	24	6-1	215
74	Archibald '55	T	20	6-1	195
75	McJunkin '55	G	21	6-0	200
76	Cannon '55	T	21	6-2	210
77	Goss '55	T	19	6-4	248
78	L. Miller '54	T	22	6-1	205
79	Passons '55	G	19	6-2	200
80	Mahew '54	E	21	6-1	190
81	Nix '55	E	19	6-1	185
82	Hawn '53	E	21	6-1	185
83	Dean '53	E	21	6-0	195
84	Riphey '53	E	21	5-11	175
85	Litowkin '54	E	24	6-0	185
86	Case '55	E	20	6-3	200
87	Berry '55	E	19	6-2	170
88	Powell '53	E	22	6-2	200
89	Bernet '55	E	19	6-4	187



RICE INSTITUTE SQUAD

No.	Name	Pos.	Age	Ht.	Wt.
11	Horton Nesrsta, 54	B	21	5-9	149
15	Dickie Bob Haddox, 53	B	20	5-9	162
16	Bobby Warren, 55	B	20	5-7	165
19	Bob Garbrecht, 54	B	20	6-1	200
20	Oree "Buzzy" Bryan, 55	B	20	6-1	185
21	Atchley Proctor, 55	B	18	6-0	170
22	Billy Ed Daniels, 53	B	21	6-0	168
23	Bill Gaskamp, 54	B	20	5-10	167
24	Dan Drake, 54	B	21	6-2	190
25	Buddy Grantham, 54	B	19	6-2	175
26	Leroy Fenstermaker, 54	B	20	6-2	195
31	Morris Stone, 55	B	19	5-9	167
35	Bill Frazier, 53	B	21	5-10	165
36	Gordon Kellogg, 55	B	19	5-10	171
39	Don Costa, 55	B	19	6-0	194
40	Tommy Lynch, 55	B	20	6-0	182
42	Don Whittaker, 54	B	19	6-1	192
43	Carl Johnson, 54	B	19	5-11	179
45	David Johnson, 54	B	20	6-0	176
47	Dicky Moegle, 55	B	18	6-0	167
49	Gino Biasatti, 55	B	20	5-10	185
50	Ronald Lassiter, 55	C	20	6-2	202
54	Don Rhoden (c-c), 53	C	19	5-11	200
55	Leo Rucka, 54	C	21	6-2	204
56	Bobby Moore, 53	C	22	6-2	205
59	Jimmy Jax, 55	C	19	6-2	200
60	Kenny Paul, 55	G	19	5-11	195
61	Gene Little, 53	G	23	6-0	205
62	LaMar "Skip" Lee, 54	G	20	6-0	197
63	Jerry Fitzpatrick, 55	C	20	6-1	202
64	Walter Schleyer, 54	G	20	5-11	190
65	Dan Hart, 54	G	20	5-10	195
66	Dan "Hans" Wagner, 55	G	21	6-1	205
67	W. C. Treadway, 54	G	20	6-1	200
68	Larry Lundstedt, 55	G	18	5-11	188
69	James Timmons, 53	G	22	6-1	198
70	John Hudson, 54	T	19	6-0	212
71	Bill Crockett (c-c), 53	T	20	6-2	206
72	Max Schuebel, 54	T	20	6-1	210
73	LaVon Cox, 55	T	19	6-0	230
74	Robert Cashion, 55	T	20	6-1	217
75	Layton Golemon, 55	T	18	6-4	210
76	James Ellis, 55	T	19	6-0	200
77	Dan Winship, 55	G	19	6-0	215
78	Richard Chapman, 54	T	19	6-6	218
79	Buddy Edwards, 54	T	21	6-2	230
80	Jack Day, 53	E	22	6-0	195
81	Bill Fisk, 54	E	21	6-0	190
82	R. E. Worthham, 55	E	19	5-11	185
83	R. J. Schroeder, 54	E	20	6-4	186
84	James Heflin, 53	E	21	6-2	188
85	"Chuck" Stephenson, 53	E	18	6-1	180
86	LaDon Cox, 53	E	19	6-0	182
87	Murff Bledsoe, 53	E	19	6-0	176
88	Sammy Ward, 54	E	20	6-0	193
89	Blois Bridges, 54	E	20	6-1	180
90	Lamoine Holland, 55	E	19	6-2	185
91	Tommy Wilson, 54	E	19	6-2	187

...Much Milder

CHESTERFIELD

LARGEST SELLING CIGARETTE IN AMERICA'S COLLEGES

DRINK
Coca-Cola
REG. U.S. PAT. OFF.

Delicious

S. M. U. (Offense)

BY POSITIONS

LE Nix 81	LT L. Miller 78	LG Partee 61	C Fox 52	RG Clem 71	RT Ligon 68	RE Powell 88
QB Musslewhite 21						
LH Norton 44			RH D. Miller 36			
FB Moore 25						

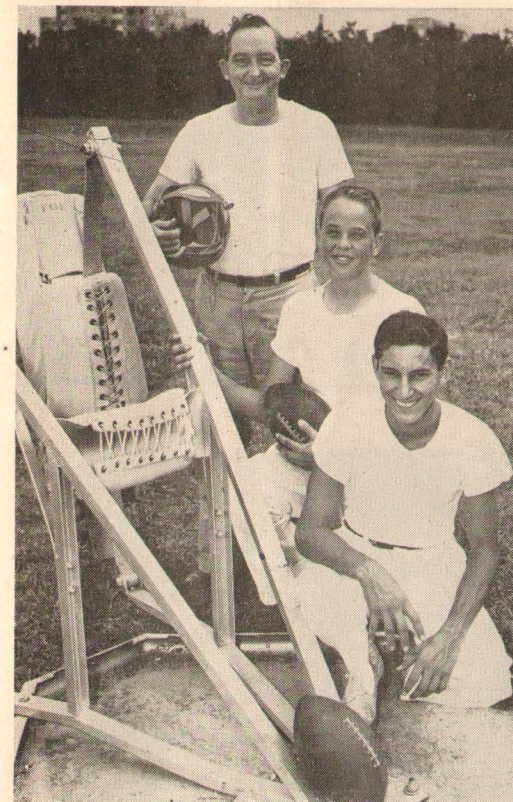
RICE INSTITUTE (Defense)

BY POSITIONS

LE Hart 65	LT Schuebel 72	LG Chapman 78	RG Treadway 67	RT Hudson 70	RE Fisk 81
LLB Rhoden 54			RLB Rucka 55		
LH Kellogg 36		RH Stone 31			
S Nesrsta 11					

See line-ups on page 17 for S. M. U. defense and Rice offense

HOUSTON COCA-COLA BOTTLING COMPANY ★ 2800 BISSONNET

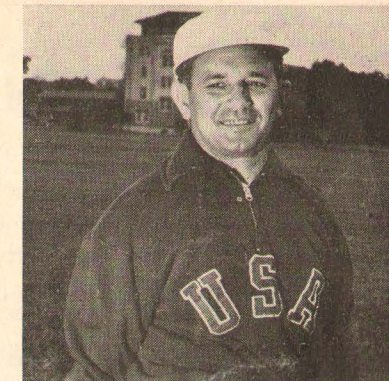


J. B. Sorsby, Howard Schaumburg, Louis Loeser

The man who looks after the storing, issuing, and repairing of the Owls' athletic equipment is J. B. Sorsby, an employee of the Institute for over 20 years.

The student manager of the football team is Norman Moore, who looks after the equipment on the field, assists in detail work in the dressing room, and handles a number of duties.

MEDICAL, TRAINING FACILITIES FOR RICE ATHLETICS



Trainer Eddie Wojecki

The finest in medical and training care and the most modern equipment available is provided athletes in all sports at Rice Institute.

This important phase of an athletic program often is overlooked by spectators, whose chief interest is in the action on the playing field. However, there are a number of persons whose services "behind the scenes" mean a great deal toward having a successful all-round athletic program.

Dr. Hugh Welch has served as team physician for many years, and with consulting physicians Dr. Jack Brannon and Dr. E. T. Smith the Rice players have the services of an excellent medical staff.

One of the busiest men on the Rice athletic scene is head athletic trainer Eddie Wojecki. His modern training quarters are where the athletes receive top care for injuries, and where the players get advice on diet and myriad subjects.

As a tribute to his ability, Wojecki received a signal honor for Rice Institute and himself last summer when he was named head trainer for the American Olympic team that competed in Helsinki, Finland.

Ably assisting in the training room are student trainers Louis Loeser, a sophomore, and Howard Schaumburg, former Owl "mascot" and now in high school.

COMPLIMENTS

OF

HERRIN TRANSPORTATION COMPANY

2300 WALKER

FA-5111

FACTS ABOUT RICE INSTITUTE

The Rice Institute is privately endowed and non-sectarian.

The Institute is named for its founder, the late William Marsh Rice of Houston.

Rice Institute has a limited enrollment with a student body of about 1,500.

In effect, all Rice students are on scholarships as no tuition is charged those accepted.

The school's picturesque campus covers 300 acres in Houston's southwest section.

A major building program has seen several million dollars in new construction on the campus.

New structures include the Fondren Library, Abercrombie Engineering Laboratory, M. D. Anderson class room building, Wiess Hall, dormitory for men, and the Rice Stadium and Rice Gymnasium.

The Fondren Library, one of the finest and most modern in the nation, contains about 250,000 volumes.

"The Official Watch for Timing this Game is Longines . . . The World's Most Honored Watch"

QUINBY EMPLOYMENT SERVICE

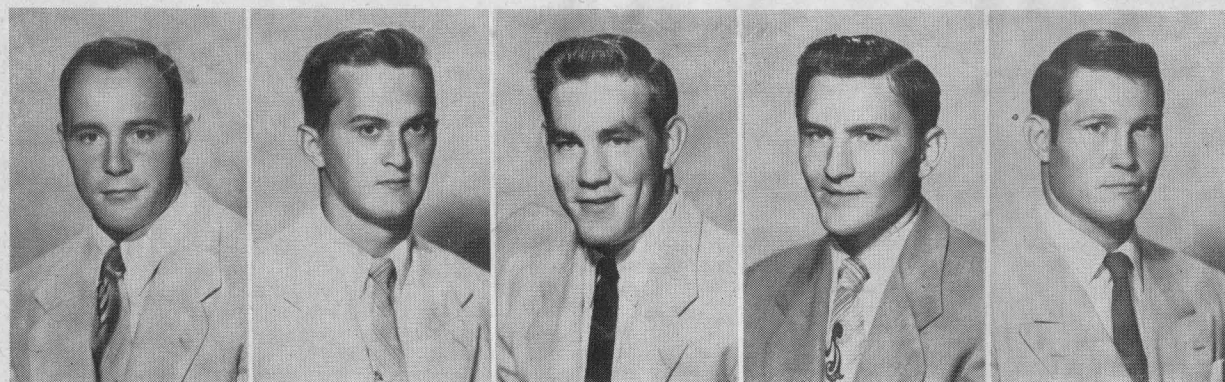
"A Name Worth Remembering"

You can benefit from our many years experience in the personnel field Executive, Office, Sales, and Technical Personnel

Member National Employment Board, Chamber of Commerce and National Association Personnel Consultants

409 Bankers Mortgage Building

Houston 2, Texas



49—Gino Biasatti

50—Ronald Lassiter

54—Don Rhoden (c-c)

55—Leo Rucka

56—Bobby Moore



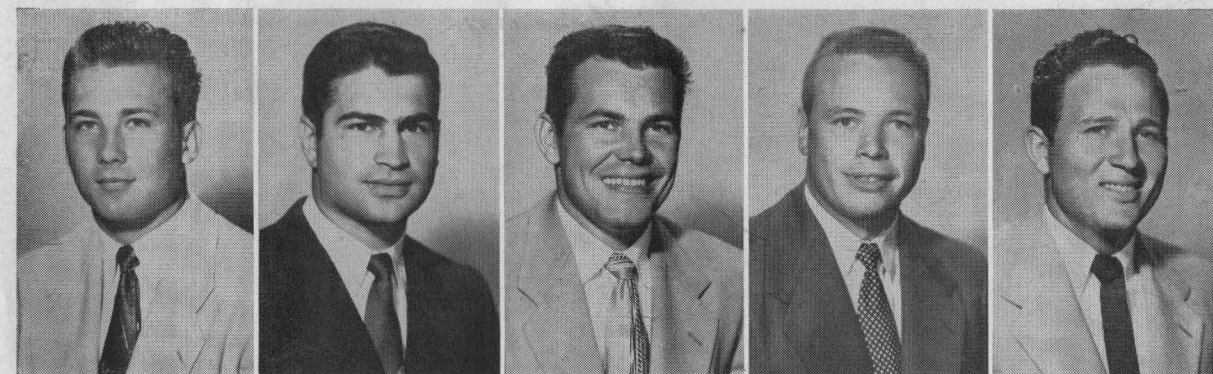
2020 Main Street

"THE BANK OF CORDIALITY"

Member Federal Deposit Insurance Corporation

BEST WISHES
TO THE OWLS

W. S. Bellows Construction Corp.



59—Jimmy Jax

60—Kenny Paul

61—Gene Little

62—LaMar "Skip" Lee

63—Jerry Fitzpatrick



COMPLETE METROPOLITAN SERVICE

WITH RESIDENTIAL CONVENIENCE



Serving Southwest Houston

West University Place, Southside Place and Bellaire

AUTOMOBILE TELLER SERVICE

UNIVERSITY STATE BANK

KEystone 5574

6135 KIRBY DRIVE at AMHERST

FIRST STATE BANK

BELLAIRE, TEXAS

MOhawk 3413

5123 BELLAIRE BOULEVARD

MEMBER FEDERAL DEPOSIT INSURANCE CORPORATION

MAKE YOUR GOAL

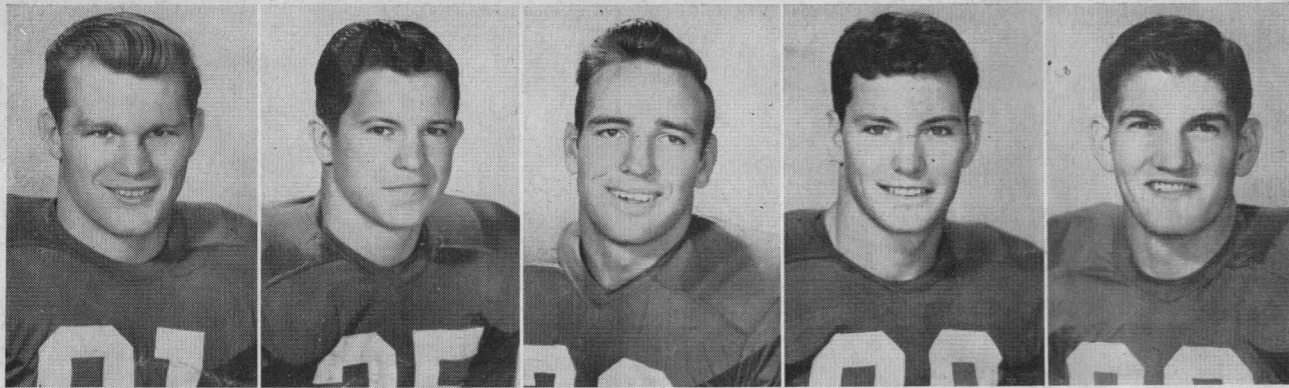
BEFORE THE KICKOFF

AT

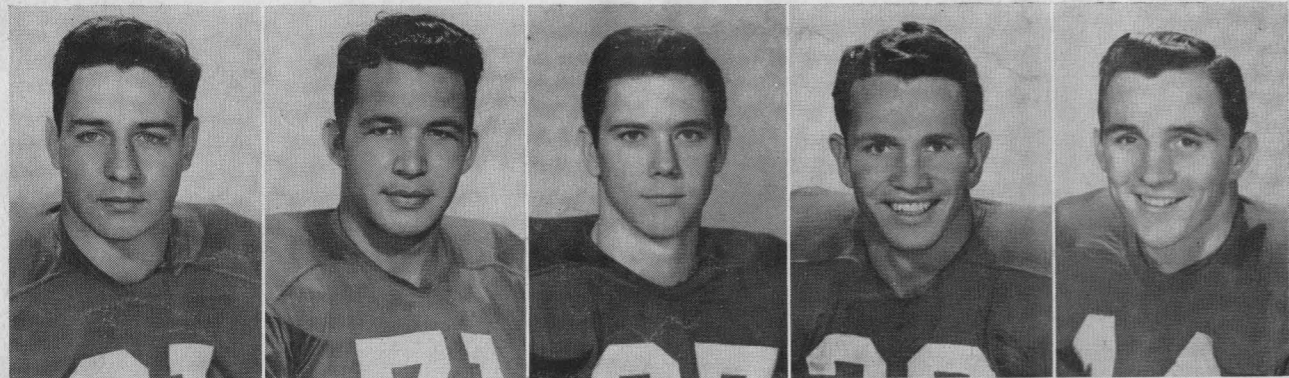
Cousin's 4401 FANNIN

OR

AFTER THE FINAL GUN

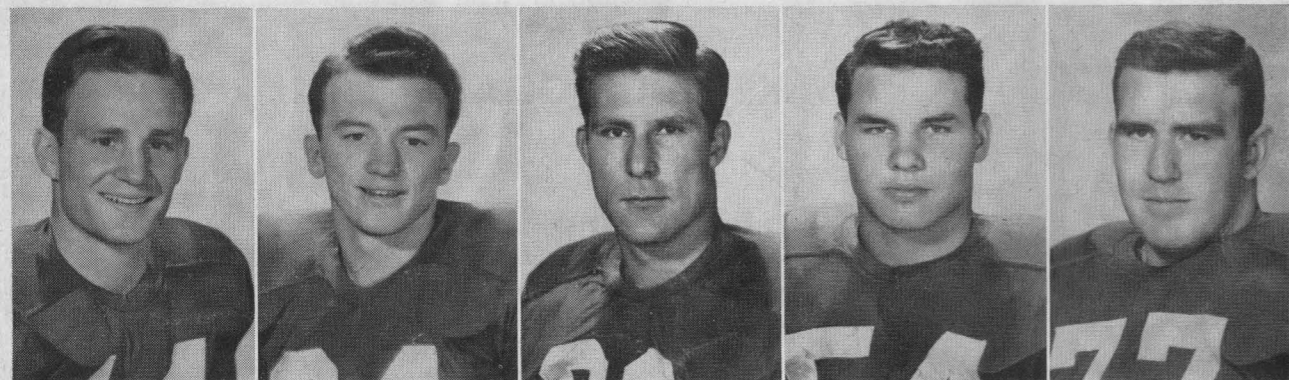


81—Nix 25—Moore 38—Forester 89—Bernet 86—Case

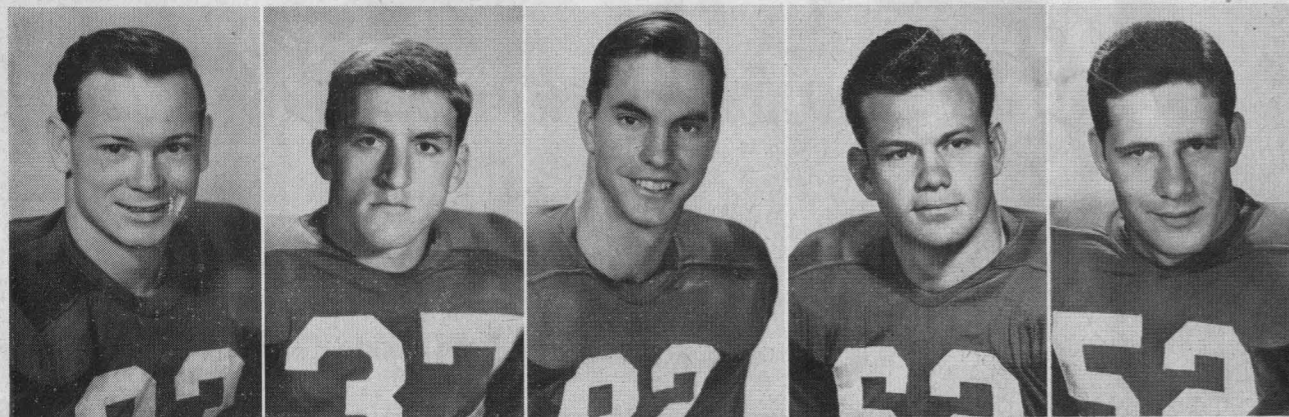


61—Partee 71—Clem 87—Berry 20—Walker 44—Norton

S. M. U. MUSTANGS



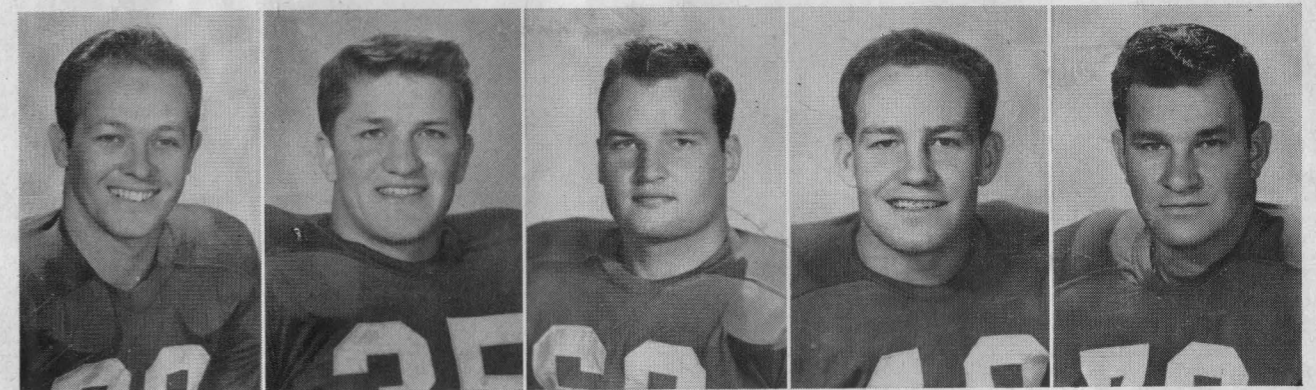
14—Stollenwerck 84—Riphey 83—Dean 54—Cole 77—Goss



33—Fields 37—Hansen 82—Hawn 62—Lafitte 52—Fox



57—Landers 26—Crisler 63—Riley 21—Musslewhite 36—D. Miller



88—Powell 35—Nutt 68—Ligon 40—Eidom 73—Cadwallader

S. M. U. MUSTANGS



85—Litowkin 64—Basquez 45—Gillis 66—Turk 58—B. Crawford



72—Hairston 78—L. Miller 80—Mahew 50—Gunlock 17—Mills

1952 CO-CAPTAINS OF RICE INSTITUTE OWLS



DON RHODEN



BILL CROCKETT

RICE OWLS VARSITY BASKETBALL SCHEDULE

All home games of coach Don Suman's Owls are played on Autry Court in the new Rice Gymnasium, completed in 1951, which seats 6,000 fans for basketball games.

- 11 Dec. (Thur.) Sam Houston State at Huntsville
- 13 Dec. (Sat.) Kansas University at Houston
- 18 Dec. (Thur.) Tulane University at Houston
- 20 Dec. (Sat.) Colorado A.&M. at Houston
- 23 Dec. (Tues.) Stephen F. Austin at Nacogdoches
- 26-30 December—Owls play three games in S.W.C. tournament at Dallas
- 6 Jan. (Tues.) *Southern Methodist at Houston
- 13 Jan. (Tues.) *Baylor University at Waco
- 17 Jan. (Sat.) *Arkansas University at Fayetteville
- 20 Jan. (Tues.) *Texas Christian at Houston
- 24 Jan. (Sat.) *Texas A.&M. at Houston
- 5 Feb. (Thur.) Sam Houston State at Houston
- 7 Feb. (Sat.) *University of Texas at Austin
- 9 Feb. (Mon.) *Arkansas University at Houston
- 14 Feb. (Sat.) *Texas A.&M. at College Station
- 17 Feb. (Tues.) *Baylor University at Houston
- 21 Feb. (Sat.) *Texas Christian at Fort Worth
- 24 Feb. (Tues.) *University of Texas at Houston
- 3 Mar. (Tues.) *Southern Methodist at Dallas

* Southwest Conference Game.

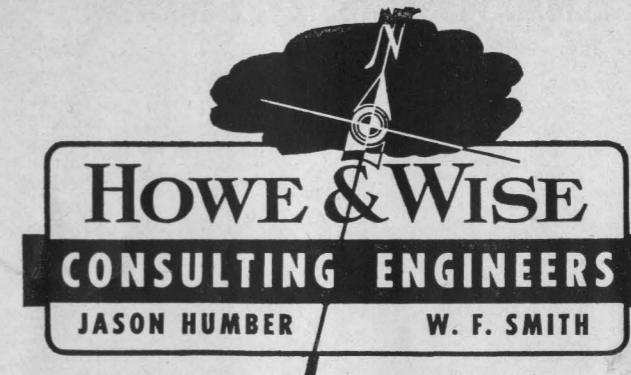
Freshman Basketball Schedule

The 1952-53 Rice freshman basketball team will play six of its 12 games at home as preliminary contests to varsity games at Autry Court in the Rice Gymnasium. Charles Moore is freshman cage coach. Here is the schedule:

- 11 Dec.—Wharton Jr. College at Wharton
- 13 Dec.—Victoria Jr. College at Houston
- 18 Dec.—Allen Academy at Houston
- 20 Dec.—Wharton Jr. College at Houston
- 13 Jan.—Baylor Freshmen at Waco
- 17 Jan.—Allen Academy at Bryan
- 24 Jan.—Texas A. & M. Freshmen at Houston
- 7 Feb.—Texas Freshmen at Austin
- 14 Feb.—Texas A. & M. Freshmen at College Station
- 17 Feb. Baylor Freshmen at Houston
- 20 Feb.—Victoria Jr. College at Victoria
- 24 Feb.—Texas Freshmen at Houston

Jason Humber
Class of '22

W. F. Smith
Class of '26



64—Walter Schleyer

65—Dan Hart

66—Dan "Hans" Wagner

67—W. C. Treadway

68—Larry Lundstedt

Complete Insurance Coverage

American General Group

American General Investment Corporation

American General Life Insurance Company

American General Insurance Company

RUSK BUILDING

HOUSTON, TEXAS

The Rice Athletic Association Would Appreciate Your Patronizing Our Advertisers

S.M.U. MUSTANGS 1952 ROSTER

No.	Player	Pos.	Age	Ht.	Wt.	Class	Hometown
89	Bernet, Ed	E	19	6-4	187	Soph.	Dallas, Texas
87	Berry, Raymond	E	19	6-2	170	Soph.	Paris, Texas
86	Case, Ronnie	E	20	6-3	200	Soph.	Dallas, Texas
15	Cox, O. T.	E	20	6-3	180	Soph.	Weatherford, Texas
50	Gunlock, Jack	E	21	6-0	195	Junior	Breckenridge, Texas
82	Hawn, Jimmy	E	21	6-2	185	Senior	Athens, Texas
85	Litowkin, Alex	E	24	6-0	185	Junior	Erie, Pa.
80	Mahew, Jim	E	21	6-1	190	Junior	St. Louis, Mo.
81	Nix, Doyle	E	19	6-1	185	Soph.	Texarkana, Texas
88	Powell, Dave	E	22	6-2	200	Senior	Portland, Ore.
84	Rippey, Bill	E	21	5-11	175	Senior	Dallas, Texas
74	Archibald, Jack	T	20	6-1	195	Soph.	Dallas, Texas
73	Cadwallader, Bob	T	24	6-1	215	Senior	Fort Worth, Texas
76	Cannon, Charles	T	21	6-0	210	Soph.	Nashville, Tenn.
71	Clem, Jerry	T	20	6-1	200	Junior	Texarkana, Texas
83	Dean, Harry	T	21	6-0	195	Senior	Breckenridge, Texas
38	Forester, Bill	T	20	6-3	220	Senior	Dallas, Texas
77	Goss, Don	T	19	6-4	248	Soph.	Dallas, Texas
72	Hairston, Tommy	T	18	6-2	205	Soph.	San Antonio, Texas
57	Landers, Jim	T	21	6-4	225	Junior	El Paso, Texas
68	Ligon, Wayne	T	20	5-9	210	Senior	Wichita Falls, Texas
70	Mayo, Leland	T	21	6-2	185	Junior	Gladewater, Texas
78	Miller, Lou	T	22	6-1	205	Junior	St. Louis, Mo.
69	Stewart, Charles	T	18	6-0	215	Soph.	Palestine, Texas
64	Basquez, Joe	G	20	5-11	190	Soph.	Houston, Texas
58	Crawford, Bill	G	20	6-3	195	Soph.	Dallas, Texas
62	Lafitte, Darrell	G	21	5-11	194	Junior	Port Arthur, Texas
61	Partee, Buford	G	22	6-1	205	Senior	Nashville, Tenn.

1952 RICE INSTITUTE OWLS VARSITY FOOTBALL ROSTER

No.	Name	Pos.	Wt.	Ht.	Age	Class	Exp.	Home Town
11	Horton Nesrsta	LH	149	5' 9"	21	Junior	1 VL	San Antonio
15	Dickie Bob Haddox	RH	162	5' 9"	20	Senior	2 VL	Navasota
16	Bobby Warren	LH	165	5' 7"	20	Soph.	Sqd.	Austin
19	Bob Garbrecht	FB	200	6' 1"	20	Junior	Sqd.	New York City, N.Y.
20	Oree "Buzzy" Bryan	QB	185	6' 1"	20	Soph.	Sqd.	Houston (San Jacinto)
21	Atchley Proctor	QB	170	6' 0"	18	Soph.	FL	DeKalb
22	Billy Ed Daniels	LH	168	6' 0"	21	Senior	1 VL	Kerrville
23	Bill Gaskamp	RH	167	5' 10"	20	Junior	J.C.	Brenham
24	Dan Drake	QB	190	6' 2"	21	Junior	1 VL	Fort Worth
25	Buddy Grantham	QB	175	6' 2"	19	Junior	Sqd.	Grand Prairie
26	Leroy Fenstemaker	QB	195	6' 2"	20	Junior	Sqd.	Llano
31	Morris Stone	RH	167	5' 9"	19	Soph.	FL	Kerrville
35	Bill Frazier	LH	165	5' 10"	21	Senior	1 VL	Pasadena
36	Gordon Kellogg	LH	171	5' 10"	19	Soph.	FL	Baytown
39	Don Costa	LH	194	6' 0"	19	Soph.	FL	Houston (St. Thomas)
40	Tommy Lynch	FB	182	6' 0"	20	Soph.	FL	Houston (San Jacinto)
42	Don Whittaker	FB	192	6' 1"	19	Junior	Sqd.	Dallas
43	Carl Johnson	RH	179	5' 11"	19	Junior	Sqd.	Houston (San Jacinto)
45	David "Kosse" Johnson	FB	176	6' 0"	20	Junior	1 VL	Baytown
47	Dicky Moegle	LH	167	6' 0"	18	Soph.	FL	Taylor
49	Gino Biasatti	FB	185	5' 10"	20	Soph.	Sqd.	Dallas
50	Ronald Lassiter	C	202	6' 2"	20	Soph.	FL	Houston (San Jacinto)
54	Don Rhoden (c-c)	C	200	5' 11"	19	Senior	2 VL	Kerrville
55	Leo Rucka	C	204	6' 2"	21	Junior	1 VL	Crosby
56	Bobby Moore	C	205	6' 2"	22	Senior	2 VL	Amarillo
59	Jimmy Jax	C	200	6' 2"	19	Soph.	FL	Houston (Lamar)
60	Kenny Paul	RG	195	5' 11"	19	Soph.	FL	Houston (Lamar)
61	Gene Little	LG	205	6' 0"	23	Senior	2 VL	Corpus Christi

Always A Winning Combination!



DRILLING STABILIZERS



KINNEAR COMBINATION BITS



BURRIS KEY SEAT WIPERS

AUTO FLEX-ECCENTRIC GUIDE CASING MILL



A-1 BIT & TOOL COMPANY

CHECK



VALVES



WATER CONTROL VALVE



JET BITS



WIRE LINE CORE BARREL

SIDE CORE



WALL BARRELS



SURE SHOT DEVIATION RECORDING INSTRUMENT

MILLING



TOOLS

9000 ALMEDA ROAD

HOUSTON TEXAS

79	Passons, Jim	G	19	6-2	200	Soph.	Sparta, Tenn.
63	Riley, Dave	G	22	5-11	205	Senior	Anahuac, Texas
66	Turk, Paul	G	23	6-1	235	Senior	New Orleans, La.
65	Walden, Earl	G	21	6-1	225	Junior	Port Arthur, Texas
67	Winters, Rex	G	19	5-11	195	Soph.	Wynnewood, Okla.
75	McJunkin, Herb	G	21	6-0	200	Soph.	Dallas, Texas
54	Cole, Don	C	20	6-0	190	Junior	Gladewater, Texas
52	Fox, Bill	C	20	6-0	190	Junior	Norman, Okla.
53	Hailey, Bobby	C	20	6-3	205	Soph.	Austin, Texas
51	O'Neal, Jim	C	19	5-11	195	Soph.	Midland, Texas
56	Turpin, Trent	C	19	6-0	200	Soph.	Burkburnett, Texas
41	Bowers, Malcolm	B	19	6-1	185	Soph.	Dallas, Texas
18	Crawford, Johnny	B	20	5-11	185	Junior	Corsicana, Texas
26	Crisler, Bill	B	19	6-0	180	Junior	Dallas, Texas
19	Donovan, Don	B	21	6-0	180	Junior	Grant's Pass, Ore.
40	Eidom, Frank	B	20	5-10	185	Soph.	Port Arthur, Texas
33	Fields, Tommie	B	19	5-9	175	Soph.	Wichita Falls, Texas
45	Gillis, Gene	B	21	6-0	180	Junior	El Paso, Texas
37	Hansen, Al	B	21	6-2	190	Junior	Dallas, Texas
22	Hunt, Lamar	B	20	5-11	182	Soph.	Dallas, Texas
47	Kelley, John	B	20	6-0	175	Soph.	Mineola, Texas
24	Kilgore, Don	B	20	5-11	185	Soph.	Denison, Texas
36	Miller, Don	B	20	6-3	195	Junior	Bellville, Texas
17	Mills, Gayle	B	21	5-11	170	Junior	Port Arthur, Texas
25	Moore, Dale	B	21	6-0	185	Junior	Mt. Vernon, Texas
21	Musslewhite, Benton	B	21	5-11	170	Senior	Lufkin, Texas
44	Norton, Jerry	B	21	6-0	185	Junior	Texarkana, Texas
35	Nutt, Duane	B	19	5-10	180	Soph.	Corsicana, Texas
43	Pace, Roy	B	20	6-0	175	Soph.	Temple, Texas
14	Stollenwerck, Sam	B	19	5-9	160	Junior	Waxahachie, Texas
20	Walker, Val Joe	B	22	6-1	175	Senior	Seminole, Texas

62	LaMar "Skip" Lee	RG	197	6' 0"	20	Junior	Sqd.	Huntsville
63	Jerry Fitzpatrick	C	202	6' 1"	20	Soph.	FL	Harlingen
64	Walter Schleyer	RG	190	5' 11"	20	Junior	Sqd.	San Angelo
65	Dan Hart	RG	195	5' 10"	20	Junior	1 VL	Houston (Milby)
66	Dan "Hans" Wagner	RG	205	6' 1"	21	Senior	1 VL	Schulenberg
67	W. C. Treadway	LG	200	6' 1"	20	Junior	1 VL	Houston (San Jacinto)
68	Larry Lundstedt	LG	188	5' 11"	18	Soph.	FL	Austin
69	James Timmons	LG	198	6' 1"	22	Senior	1 VL	Sweetwater
70	John Hudson	LT	212	6' 0"	19	Junior	1 VL	Center
71	Bill Crockett (c-c)	RT	206	6' 2"	20	Senior	2 VL	Bonham
72	Max Schuebel	LT	210	6' 1"	20	Junior	1 VL	Houston (Reagan)
73	LaVon Cox	RT	230	6' 0"	19	Soph.	FL	Galena Park
74	Robert Cashion	RT	217	6' 1"	20	Soph.	FL	Mexia
75	Layton Golemon	LT	210	6' 4"	18	Soph.	FL	Kerrville
76	James Ellis	LT	200	6' 0"	19	Soph.	FL	West Columbia
77	Dan Winship	LG	215	6' 0"	19	Soph.	Sqd.	Houston (Reagan)
78	Richard Chapman	LT	218	6' 6"	19	Junior	1 VL	Waxahachie
79	Buddy Edwards	RT	230	6' 2"	21	Junior	Sqd.	Texarkana, Ark.
80	Jack Day	RE	195	6' 0"	22	Senior	2 VL	Galena Park
81	Bill Fisk	LE	190	6' 0"	21	Junior	1 VL	Irving
82	R. E. Wortham	RE	185	5' 11"	19	Soph.	FL	Klein
83	R. J. Schroeder	LE	186	6' 4"	20	Junior	1 VL	East Bernard
84	James Heflin	LE	188	6' 2"	21	Soph.	Sqd.	Mart
85	"Chuck" Stephenson	LE	180	6' 1"	18	Soph.	FL	Bloomington
86	LaDon Cox	RE	182	6' 0"	19	Soph.	FL	Galena Park
87	Murff Bledsoe	RE	176	6' 0"	19	Soph.	FL	Pearsall
88	Sammy Ward	LE	193	6' 0"	20	Junior	Sqd.	Laredo
89	Blois Bridges	LE	180	6' 1"	20	Junior	Sqd.	Grand Prairie
90	Lamoine Holland	RE	185	6' 2"	19	Soph.	FL	San Antonio
91	Tommy Wilson	RE	187	6' 2"	19	Junior	J.C.	Graham

"The Official Watch for Timing this Game is Longines . . . The World's Most Honored Watch"

AT LUNCH OR DINNER

You can always enjoy a delicious meal in the Warwick's Famous Crystal Dining Room

A PLEASURE TO SERVE YOU

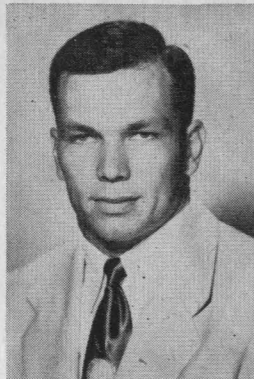


R. T. CULLATHER, Manager

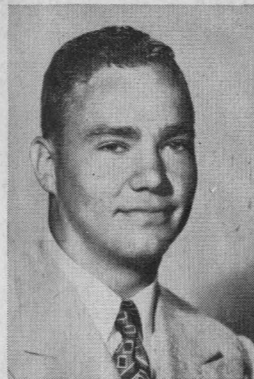
WARWICK HOTEL

AND APARTMENTS

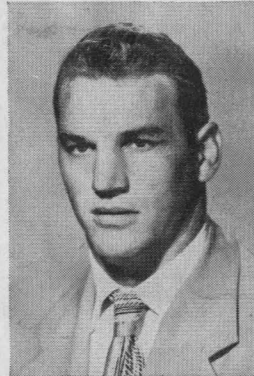
Houston 1, Texas



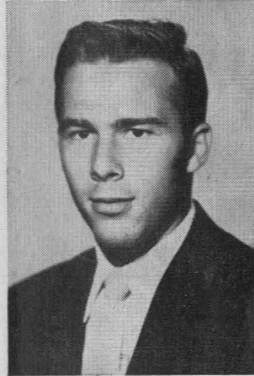
69—James Timmons



70—John Hudson



71—Bill Crockett (c-c)



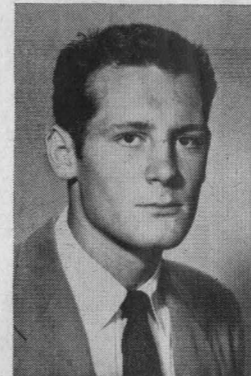
72—Max Schuebel



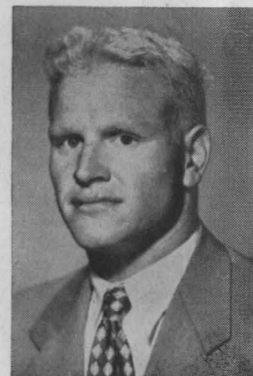
73—LaVon Cox



74—Robert Cashion



75—Layton Golemon



76—James Ellis



OSHMAN'S

FANNIN AT TEXAS

912 MAIN STREET

Salutes the Rice Owls '52

"Stay Dry When the Weather is Wet"
Light weight, compact
Plastic Spectator

PONCHO WITH HOOD

Fits into your purse or pocket.

1.25

ORDER BY MAIL

PHONE PR-2231

Oshman's Athletic Dept.



Mmmmm... **CAMELLIA** Ice Cream!

Enjoy catering-quality Camellia Ice Cream often . . . it's a great hit for any occasion . . . after-the-game snacks . . . mealtime dessert or party treat. Buy the large family-size carton . . . or individual cube shaped cartons for personalized flavor selection.



CAMELLIA
ice cream

For the name and address of your nearest dealer, call JUstin 0581.

Drinks in Stadium are cooled with
Texas Ice "Sized Ice"

**TEXAS ICE & FUEL
COMPANY**

6301 Harrisburg

WAside 2154

The Rice Athletic Association Would Appreciate Your Patronizing Our Advertisers

☆ *The Southwest's
Finest
and reasonable, too!*

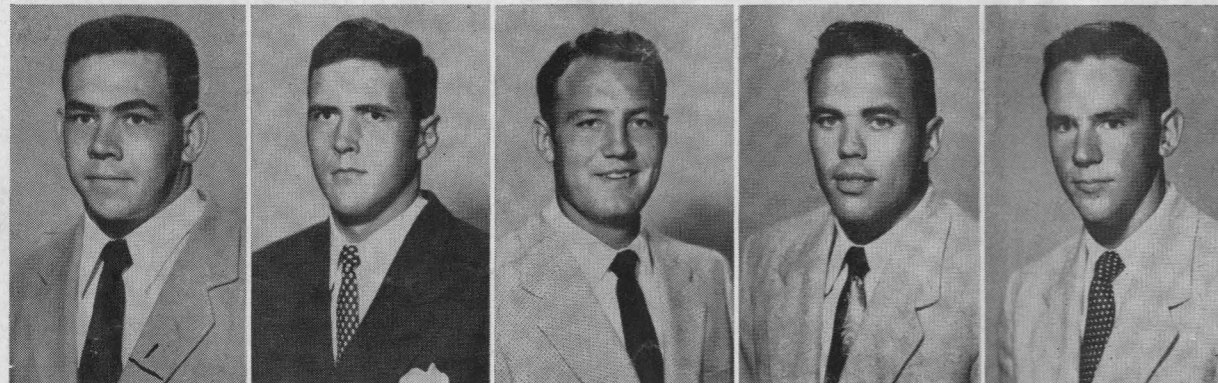
WELDON *Cafeteria*
4916 South Main

- Open Daily—11:00 a.m. through 8:30 p.m.
- Two Free Parking Lots Adjoining

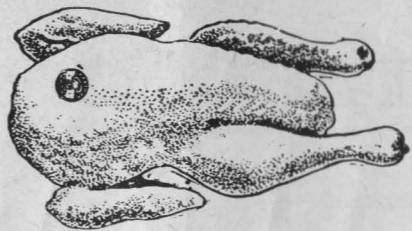
South End Building Materials Co.

READY MIX CONCRETE
SAND — GRAVEL — CEMENT

South Houston Plant 5102 Galveston Road Phone MI-3328	Deer Park Plant Deer Park, Texas Phone GR-9-2251	Kirby Drive Plant 4830 Kirby Drive Phone LY-9131
---	--	--



77—Dan Winship 78—Richard Chapman 79—Buddy Edwards 80—Jack Day 81—Bill Fisk



Frederick's Best Tagged Fryers
FRESH, PLUMP, CLEAN
They Sell Themselves

FREDERICK POULTRY & EGG CO.
Vernon C. Fredericks, Sr., Pres.-Mgr.
1817 CENTER • PReston 5195

THREE SENIOR OWL BACKS



Dickie Bob Haddox Bill Frazier Billy Ed Daniels



**the RIGHT way to
plan a play...
or a trip**

A coach designs every play to go all the way . . . the same as today's bus traveler does when he chooses CONTINENTAL TRAILWAYS thru bus service between many of the metropolitan centers of America. Whether your trip be to the next town, or across the nation, make your first choice Continental!

And for weekend football trips, charter a big Continental Silverliner and follow your team wherever they play.

CONTINENTAL TRAILWAYS

"YOUR HIGHWAY HOST FROM COAST TO COAST"

At the games it's


**JASMINE FRANKS AND
HAM SANDWICHES**
(Always Government Inspected)

HOUSTON PACKING COMPANY • 3301 NAVIGATION • PReston 2361

The Best FRIED CHICKEN in Town

Famous throughout the Southwest for its tenderness and flavor. Fast service, low prices. Box orders to take out at no extra cost.

6441 SOUTH MAIN in HOUSTON



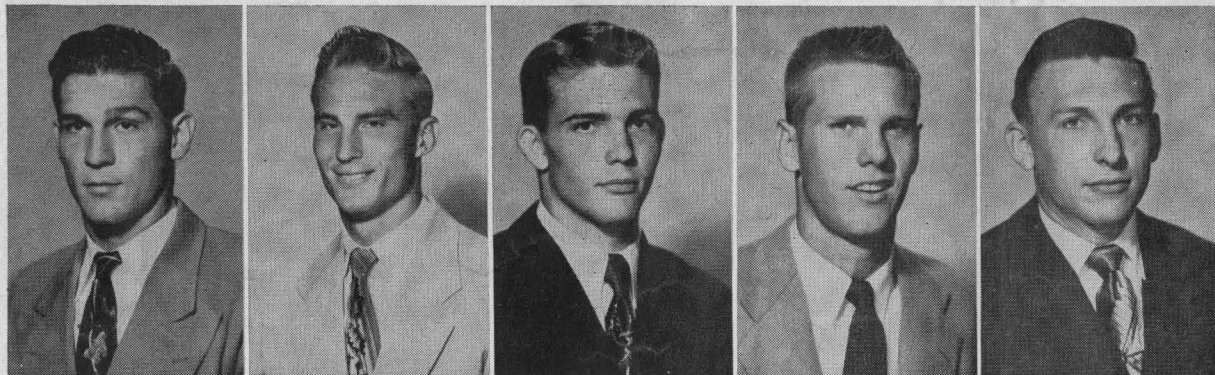
The Rice Athletic Association Would Appreciate Your Patronizing Our Advertisers

PEIDIEN IRON & STEEL CO.

ESTABLISHED 1890

WHOLESALE

HOUSTON, TEXAS



82—R. E. Wortham

83—R. J. Schroeder

84—James Heflin

85 "Chuck" Stephenson

86—LaDon Cox

UNIVERSITY BLVD.
RICE
GREENERIAR
10 minutes
SO. SHEPHERD DR.
2015 W. GRAY

明宮
Listen to the **SCORES** right after the game on **KPRC** brought to you by the **MING PALACE**

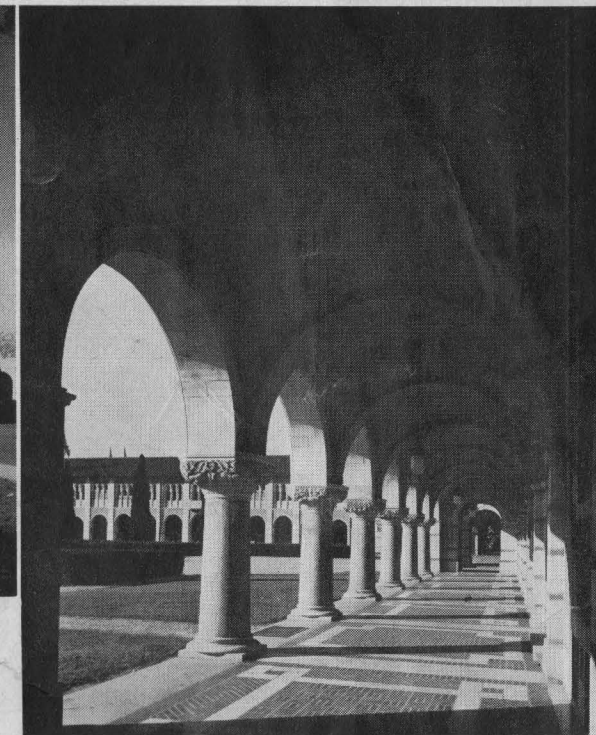
And if you want to make a score, **DAD**, treat the family to **GOOD** Chinese and American **FOOD** tonight at the **MING PALACE**
In the River Oaks Shopping Center
The House of Good Food

for...

- Office Forms • Folders
- Booklets • Color Printing
- Letterpress and Offset
- One-Time Carbon Forms
- Continuous • Fanfold
- Register Forms



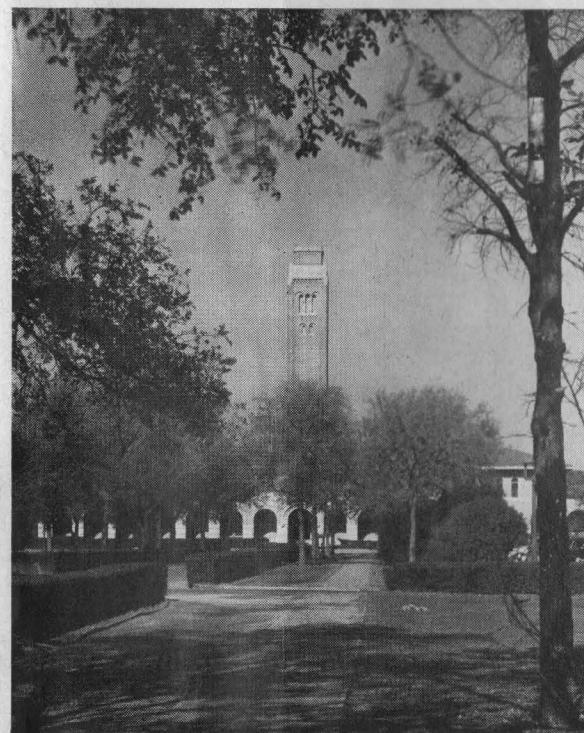
Fondren Library



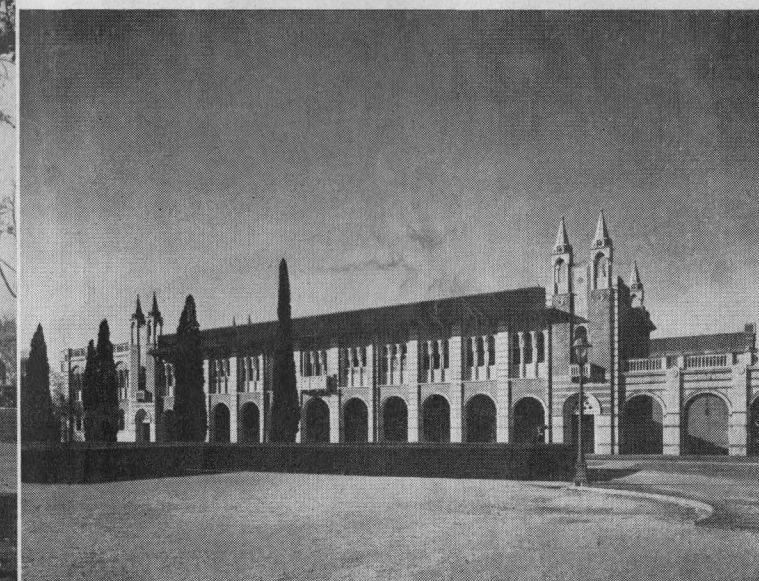
Cloisters of Lovett Hall

Campus Scenes

OF THE RICE INSTITUTE

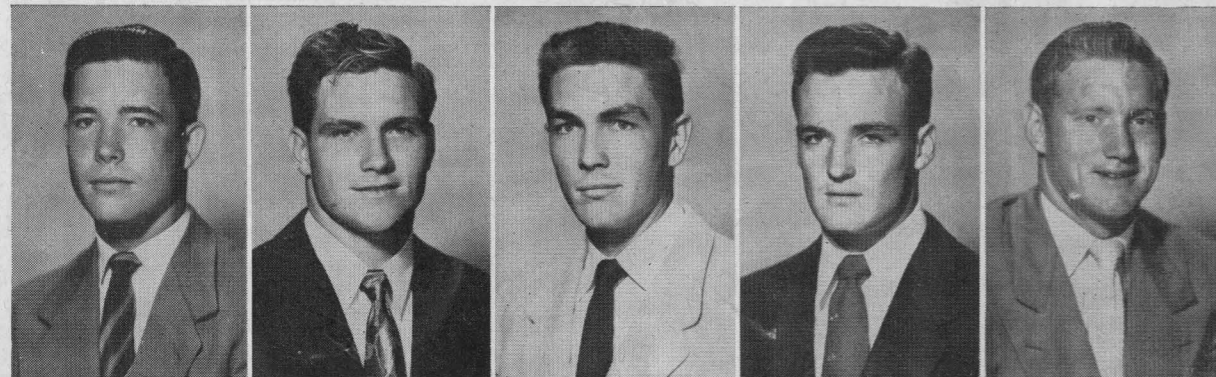


Engineering Building and Campanile



Physics Building

The "Fresh Up"
Family Drink!



87—Murff Bledsoe 88—Sammy Ward 89—Blois Bridges 90—Lamoine Holland 91—Tommy Wilson

CHAMPIONSHIP AND BOWL RECORD OF THE RICE OWLS

Rice Institute has fielded a football team for forty years, and in that time the Owls have provided many thrills for grid fans of the Southwest and the nation.

The Owls have played from coast to coast with intersectional competition against teams representing some of the country's finest schools.

Many honors have come the way of Rice teams in the past. The Owls have won the Southwest Conference championship on three occasions—in 1934, 1937, and 1949—and shared the title with Arkansas in 1946.

Rice has been represented in three major bowl games, and the Owls were victorious on each occasion. The 1937 team beat Colorado 28-14 in the Cotton Bowl classic, the 1946 club stopped Tennessee 8-0 in the Orange Bowl, and the 1949 team trimmed the North Carolina Tarheels 27-13 in the Cotton Bowl.

In addition, many other honors have come the way of Rice players and coaches. Several players have been named to All-American teams, and a host of Owls have been accorded All-Southwest Conference honors.

Special honors of last year saw end Bill Howton selected on many All-American teams and invited to play for the College All-Stars, while along with teammate end Sonny McCurry he played under Rice coach Jess Neely in the East-West Shrine game for the benefit of crippled children last December.

ENJOY THE GAME MORE WITH



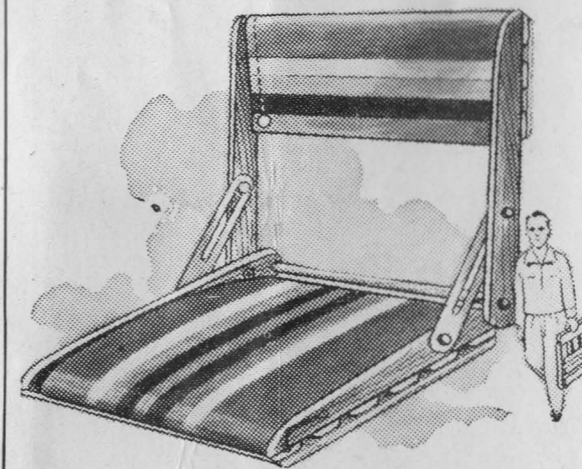
BINOCULARS

And

FIELD GLASSES

Holt's carry a complete line of fine nationally known binoculars and field glasses, all sizes, all prices.

Come in our store at your first opportunity. Visit our camera shop and let us show you these fine glasses. . . .



"Tak-Along" stadium seat and backrest, fine hardwood construction, kapok seat and back, durable fancy striped canvas, hours of comfort.



"I'd walk a mile for a
CAMEL"



*So Mild—
So Flavorful!*

