

The TCU Game

RICE CAMPUS ☆ NOVEMBER 22, 1952

OFFICIAL PROGRAM — TWENTY FIVE CENTS



DOROTHY COLLINS,
"The Sweetheart of Lucky Strike,"
says:

Be Happy-
GO LUCKY!

**LUCKIES
TASTE
BETTER!**



L.S./M.F.T.-Lucky Strike Means Fine Tobacco

©OPR., THE AMERICAN TOBACCO COMPANY

**ONLY ONE
CAN BE
BEST**

*Taste Tru-Ade
and judge for yourself*



THE
Natural
SOFT DRINK

SOUTH TEXAS NATIONAL BANK

Progressive Banking Service Since 1886

213 MAIN STREET • HOUSTON, TEXAS
MEMBER FEDERAL DEPOSIT INSURANCE CORPORATION



Satisfy Your Hunger at



Bill Williams

6515 SOUTH MAIN
OPPOSITE RICE INSTITUTE
GOOD FOOD TO FIT YOUR APPETITE AND YOUR POCKETBOOK

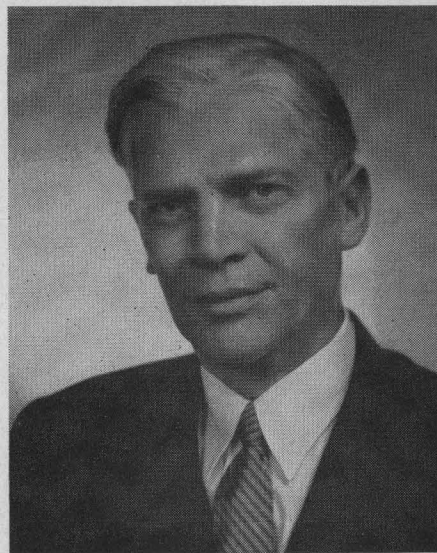
Represented for National Advertising by DON SPENCER COMPANY, INC., 271 Madison Ave., New York 16, N.Y.

BOARD OF GOVERNORS OF THE RICE INSTITUTE

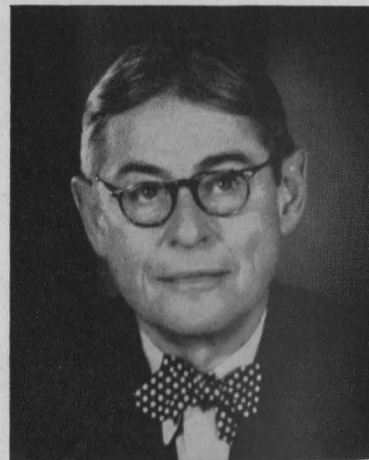
TRUSTEES



GUS S. WORTHAM



GEORGE R. BROWN
Chairman



LAMAR FLEMING, JR.



WILLIAM A. KIRKLAND



J. NEWTON RAYZOR



DR. FREDERICK R. LUMMIS



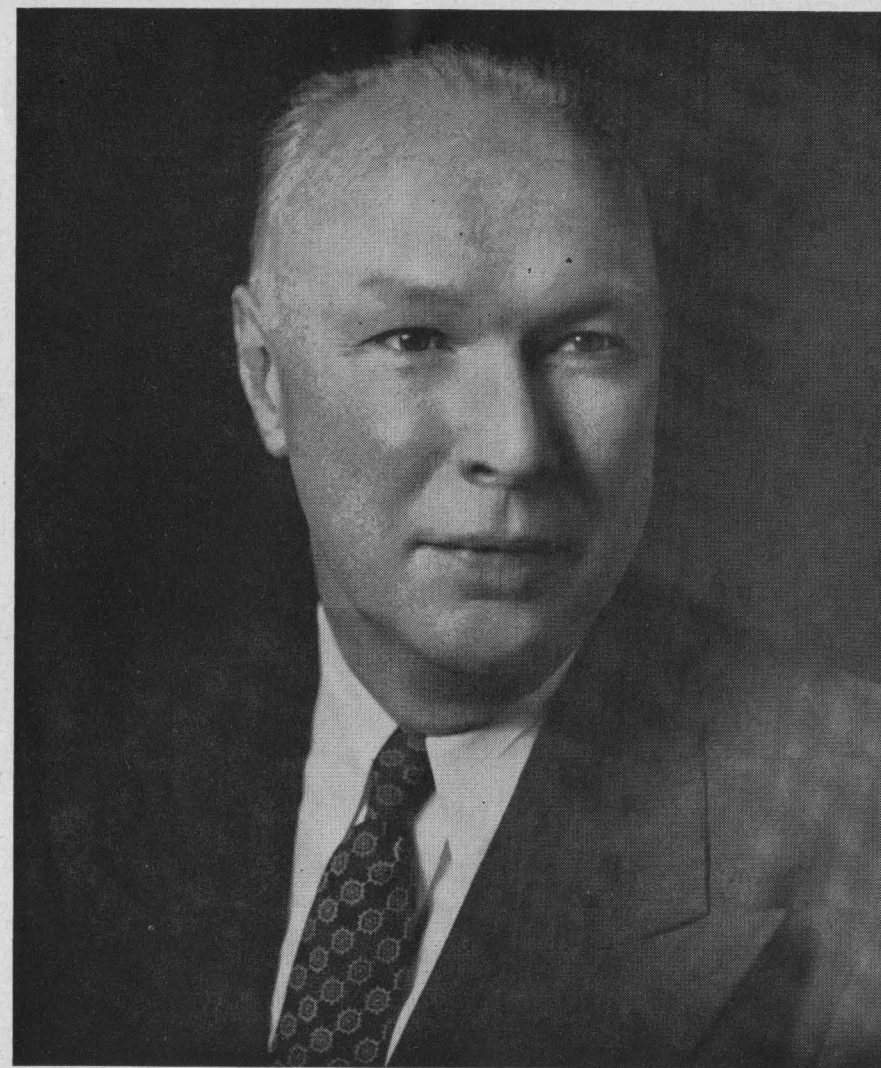
JOHN S. IVY

TERM MEMBERS

HERBERT ALLEN
ROBERT P. DOHERTY

FRANCIS T. FENDLEY
H. MALCOLM LOVETT

ROBERT H. RAY
HARMON WHITTINGTON



DR. WILLIAM V. HOUSTON
President, The Rice Institute

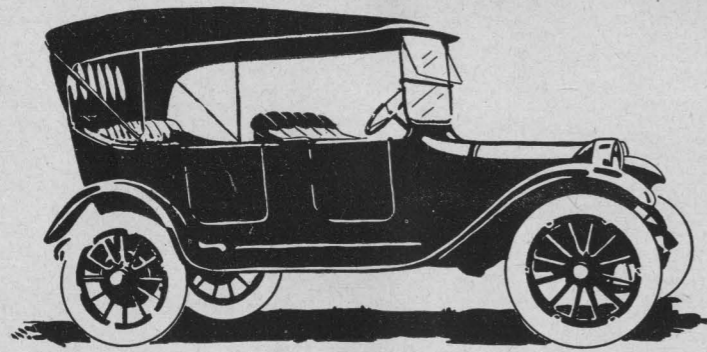
Just forty years ago the first class of freshmen entered the Rice Institute. That first freshman class organized a football team and played a schedule involving some satisfying victories along with some overwhelming, if not spectacular, defeats.

Today the Rice Institute welcomes you, its guests, to a stadium which bears little resemblance to the ball park in which our first games were played. Our physical facilities have grown with the city of Houston and because of the interest and help of its citizens.

You are all invited to spend a little time looking around the rest of our campus. Some of you may not have seen the Fondren Library, Wiess Hall, or the Abercrombie Laboratory. We hope you will visit them.

In particular, we hope you enjoy the game you have come to see. May you not be disappointed in its outcome more than half the time.

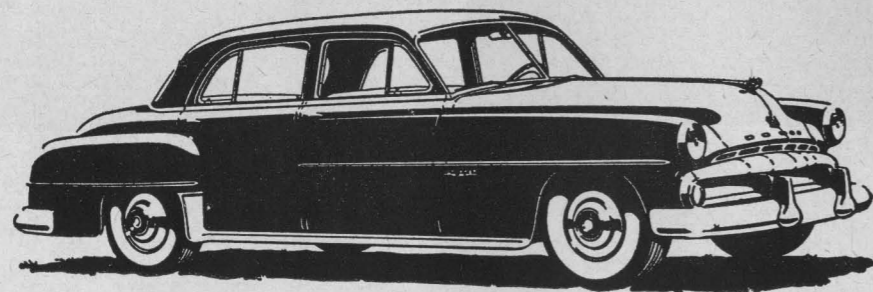
WILLIAM V. HOUSTON



38 YEARS

of automotive service to Texans

Choose a beautiful new DODGE
from a dependable dealer . . .



Jackson Motors, Ltd.

ALBERT H. BERRY

JACK W. JACKSON

Texas' Oldest Dodge and Plymouth Dealer

2404 South Main

• HOUSTON

The Rice Athletic Association Would Appreciate Your Patronizing Our Advertisers



Best wishes, always
to the BLUE and GRAY!

Cameron

IRON WORKS, INC.

HOUSTON

THE RICE INSTITUTE ATHLETIC COACHING STAFF



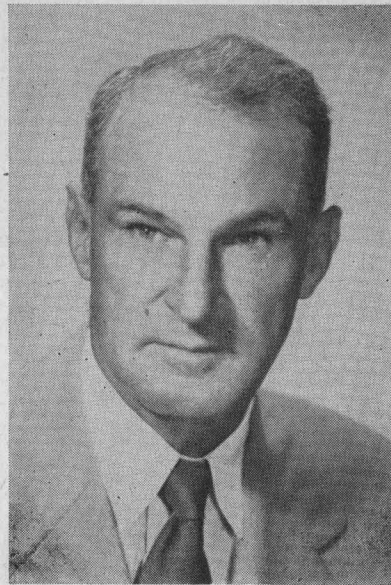
JOE DAVIS
Line Coach

CECIL GRIGG
Backfield Coach

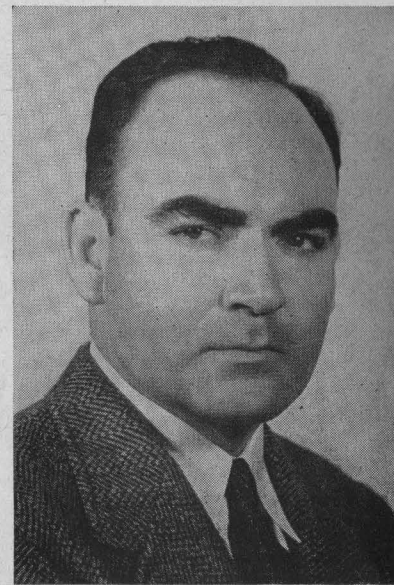
A. M. BALE
End Coach

DELL MORGAN
Asst. Coach

CHARLES MOORE
Freshman Football Coach
Freshman Basketball Coach



JESS NEELY
Head Football Coach
Athletic Director



EMMETT BRUNSON
Track Coach
Bus. Mgr. of Athletics



HAROLD STOCKBRIDGE
Asst. Coach

DON SUMAN
Basketball Coach

EDDIE WOJECKI
Head Trainer

CARROLL MARTIN
Office Manager

BILL WHITMORE
Sports News Director

OFFICIAL WATCH FOR THIS GAME

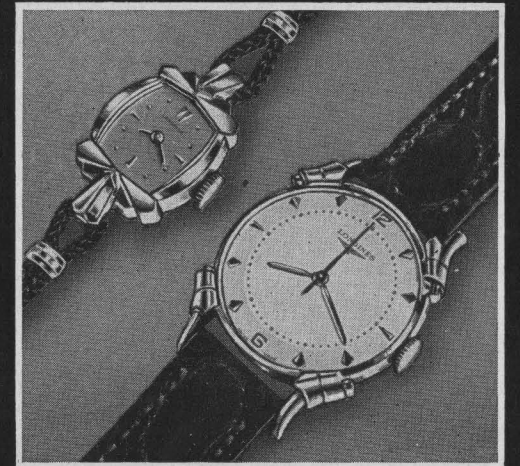


Longines



The World's Most Honored Watch

ACCEPTED AS OFFICIAL WATCH
FOR TIMING
CHAMPIONSHIP SPORTS EVENTS
IN ALL FIELDS ALL OVER THE WORLD



*Product of
Longines-Wittnauer Watch Company*

As constructors of the Rice Stadium, we take great satisfaction from the contests played here—not from the final score, but from the knowledge that on this field there is rivalry without rancor, defeat without dishonor, and victory without tyranny.

In this great game look not for the shoddy, the dishonest, the shirker and the fraud. for here he cannot survive.



Brown & Root, Inc.

Engineers — Constructors

HOUSTON

TOUCHDOWN!



Touchdown or take off with a Beech and you'll know you've got a champion on your hands. In Beech's Executive Transport and Bonanza models you'll find the World's finest airplanes designed specifically to meet the requirements of leading executives who appreciate the importance of air travel in modern industry.

To match these unexcelled planes, J. D. Reed has built a superior sales and service organization in keeping with the high standards demanded by those who accept only the best.

J.D. REED CO., Inc.
SALES SERVICE
Beechcraft
DISTRIBUTOR


HOUSTON
Municipal Airport

TODAY'S GAME

BY BILL WHITMORE
Rice Sports News Director

Closing out the home season for 1952, the Rice Owls play old rival T. C. U. of the Southwest Conference for the 31st time in a series that dates back to 1914.

As these teams scrap for an opportunity to finish well up in the first division of the SWC standings, the game will mark the final appearance in Rice Stadium of ten seniors on the Owl squad. They are co-captains Don Rhoden, line-backer and Bill Crockett, tackle; Gene Little, guard; Bobby Moore, center; "Hans" Wagner, end; James Timmons, tackle; Jack Day, end; Billy Ed Daniels, halfback; Bill Frazier, halfback; and Dickie Bob Haddox, halfback.

The resurging Owls smashed the Texas Aggies for the eighth straight time last Saturday at College Station, 16-6, for their second conference victory in a row. If they can beat the defending champs of '51 today, it not only will insure the Owls that they can at least equal last year's 3-3 mark in conference play, but that they can finish ahead of T. C. U. in the final standings.

The Frogs have a conference mark to date of

one win, one loss, and two ties with two games left, including the one here today. A narrow 7-14 defeat at the hands of the Texas Longhorns last Saturday after they led for three quarters not only was T. C. U.'s first conference defeat but coupled with the two ties meant they cannot repeat as conference titlists.

The two most experienced coaches in the Southwest guide the teams that play here today. Jess Neely is in the home stretch of his 13th year as coach of Rice, while "Dutch" Meyer has been head man at T. C. U. since 1934.

The T. C. U. offense, which includes the double wing and Meyer spread among various formations used, is sparked by tailback Ray McKown, all conference last fall, with Mal Fowler, Ronald Clinkscales, John Harville, Gil Bartosh, and others among a host of fine backs who operate behind a big, tough line.

The Owls, who got some sharp running from Kossee Johnson, Bill Frazier, and Morris Stone, last week, again are slated to have junior Leroy Fenstermaker at quarterback after his brilliant job of subbing for the injured Dan Drake. Fenstermaker also has kicked 15 extra points in 17 attempts and has a field goal to his credit this year.

W. Cecil Sisson Mortgage Company

Complete Financial Service

Roy Bean, Loan Officer

402 Rusk Building

Represented for National Advertising by DON SPENCER COMPANY, INC., 271 Madison Ave., New York 16, N.Y.

Spring Air

"Lastic Foam"

MATTRESSES and BOX SPRINGS

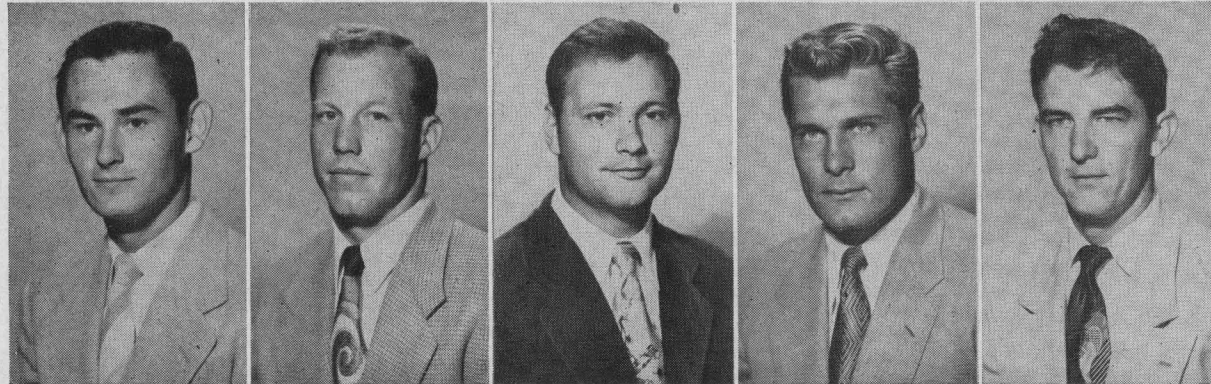
America's Finest Bedding Equipment

PARKER BEDDING COMPANY

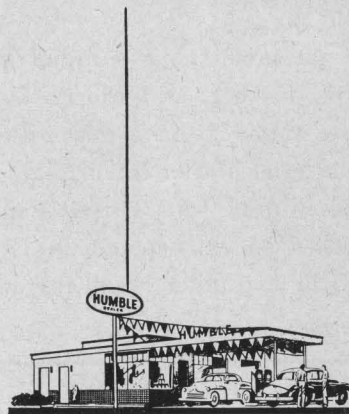
FREDERICK PARKER

HOUSTON

JOEL PARKER



11—Horton Nesrsta 15—Dickie Bob Haddox 16—Bobby Warren 19—Bob Garbrecht 20—Oree "Buzzy" Bryan



Welcome to
* **FOOTBALL**
HEADQUARTERS

*That means:

welcome under
the Humble sign in
your neighborhood.



You're always welcome under the Humble sign—every day in the year. But right now you'll find your neighborhood Humble dealer's station gaily decorated with Southwest Conference school colors in honor of the season, and provided with timely information about Humble's football broadcasts.

Come the weekends, your neighbor under the Humble sign invites you to be his guest at Humble's broadcasts of the games you can't attend. Enjoy this neighborly hospitality right in your own living room—tune in the Southwest Conference game, or games, of your choice.

When you drive to a game (and plan to see as much football as you can; there's no substitute for the glamor and excitement you find only at the stadium) stop for service at the Humble signs along your route . . . Welcome to Football Headquarters!

HUMBLE OIL & REFINING CO.

OFFICIAL SIGNALS ADOPTED BY NATIONAL COLLEGIATE ATHLETIC ASSOCIATION



1. OFFSIDE



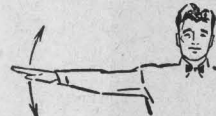
2. ILLEGAL POSITION OR PROCEDURE



3. ILLEGAL MOTION OR SHIFT



4. DELAY OF GAME



5. PERSONAL FOUL



6. ROUGHNESS AND PILING ON



7. CLIPPING



8. ROUGHING THE KICKER



9. UNSPORTSMANLIKE CONDUCT



10. DEFENSIVE HOLDING



11. ILLEGAL USE OF HANDS AND ARMS



12. INTENTIONAL GROUNDING



13. ILLEGALLY PASSING OR HANDING BALL FORWARD



14. FORWARD PASS OR KICK CATCHING INTERFERENCE



22. TIME-OUT



21. SAFETY



20. TOUCHDOWN OR FIELD GOAL



19. BALL DEAD; IF HAND IS MOVED FROM SIDE TO SIDE: TOUCHBACK



18. CRAWLING, HELPING THE RUNNER OR INTERLOCKED INTERFERENCE



17. INCOMPLETE FORWARD PASS, PENALTY DECLINED, NO PLAY OR NO SCORE



16. BALL ILLEGALLY TOUCHED, KICKED OR BATTED



15. INELIGIBLE RECEIVER DOWN FIELD ON PASS

For the best signal in TV...

see



BLACK-DAYLITE TELEVISION



Huge screen, beautiful compact cabinet and on-the-spot picture realism—it's G-E Model 21T4. Go into a huddle with your dealer—fast. Ask him to demonstrate the features.

When you can't get to the game, the next best thing is G-E Model 21T4!

GENERAL ELECTRIC SUPPLY COMPANY

1312 LIVE OAK

HOUSTON, TEXAS



FOLLOW YOUR TEAM TO THE GAME

Fly

TRANS-TEXAS
Airways

CALL TRANS-TEXAS
OR YOUR LOCAL
TRAVEL AGENT



21—Atchley Proctor 22—Billy Ed Daniels 23—Bill Gaskamp 24—Dan Drake 25—Buddy Grantham

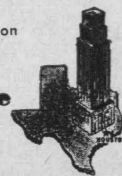
We are Proud . . .

Of our many young depositors who are starting now to acquire the independence of a savings account—the satisfaction of planned financing.

For over 30 years it has been our policy to extend to our customers a friendly understanding of their financial responsibilities. We invite you to drop by 712 Main to talk with us about our Free Services, Savings Plans, Loan Plans, Trust Facilities and Normal Charge Services.

Member Federal Deposit Insurance Corporation

National Bank of Commerce
OF HOUSTON
"The Bank of Courtesy"



WINNING COMBINATION . . .

Dependability and economy are the star performers on the United Gas service team. Dependability plays an important part throughout every season of the year . . . making it possible for your family to constantly enjoy the comfort and convenience offered by fine gas appliances. And because your natural gas service is so economical, it represents the wisest fuel investment you can make in your home, your business or your industry. United Gas is proud to have the opportunity of making this important gas service available to you and your neighbors.

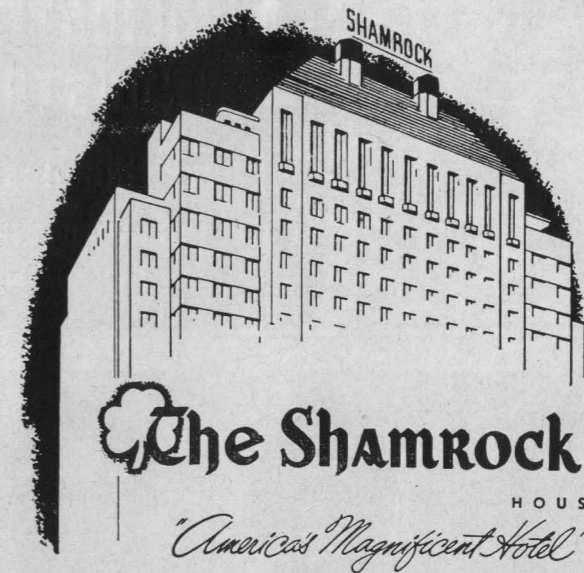
For The Best In Gas Service
Call . . . Blackstone 0271



UNITED
GAS

THE BIGGEST BARGAIN IN YOUR HOME TODAY — PHONE AT ALL
87 Years of Dependable GAS Service to Houstonians

The Rice Athletic Association Would Appreciate Your Patronizing Our Advertisers



For the
**All-American
Week-End**



Make The Shamrock your headquarters hotel — where gracious hospitality and a warm welcome await you. You'll enjoy the comfort, the faultless service, the superb cuisine, the luxurious facilities that only The Shamrock affords its guests.

Cavalcade of Stars

There's always exciting big-name entertainment in The Shamrock's famed Emerald Room . . . stars of stage, radio and motion pictures appear continually, in person, in the Cavalcade of Stars. You'll enjoy your "night out" in The Shamrock's supper clubs.

GLENN McCARTHY, President

M. JACK FERRELL, Managing Director

Represented for National Advertising by DON SPENCER COMPANY, INC., 271 Madison Ave., New York 16, N.Y.

Foote's Cafeteria

Houston's Finest Suburban Dining Room

2 Blocks West of Stadium

Continuous Service 11:00 A.M. to 8:30 P.M.

2407 RICE BOULEVARD

7 Days a Week

CONSOLIDATED CHEMICAL INDUSTRIES INC.

Heavy Chemicals for Industry

640 MELLIE ESPERSON BLDG.

HOUSTON 2, TEXAS

NAME BRAND
Sporting Goods

OPEN DAILY 9 A.M.-6 P.M.

HOUSTON SPORTS SHOP

4717 Main Street, Houston • Telephone KE-8660, JU-2131



26—Leroy Fenstemaker

31—Morris Stone

35—Bill Frazier

36—Gordon Kellogg

39—Don Costa



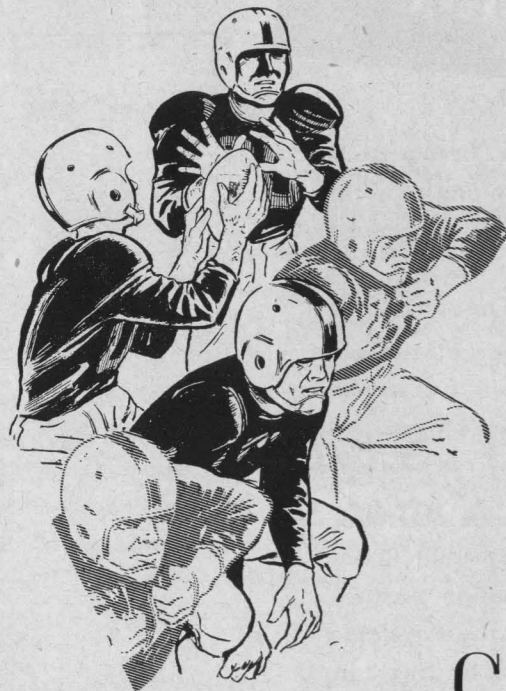
40—Tommy Lynch

42—Don Whittaker

43—Carl Johnson

45—David Johnson

47—Dicky Moegle



You,
Your Great Southerner
and Life Insurance

are an unbeatable combination for
winning financial independence for
your family and yourself.

GREAT SOUTHERN
Life Insurance Company



4310 Dunlavy • Houston 6, Texas



**EVERYBODY'S
YELLING FOR**

**THE BEER WITH THAT
SMOOTH, MILD FLAVOR**

Yes Sir,— here's a beer to cheer — Southern Select! The beer with that smooth, mild flavor! It has the extra point that makes the difference — It's Pilsenized — light and bright — always tastes just right! One taste of this wonderful golden dry brew and you'll yell for the "Sparkle beer", too!

ITS PILSENIZED — HAS SPARKLE

Southern Select BEER

GALVESTON-HOUSTON BREWERIES, INC., GALVESTON, TEXAS

Enjoy
the Finest Steaks
Obtainable

YOU SELECT the steak of your choice from our gleaming Steak Bar;

YOU BRAND IT as you wish it prepared: "R" for rare, "M" for medium, etc.

WE COOK IT on our grill, or our brand new charcoal broiler, as you prefer.

ERNEST COKER'S

Ye Old College Inn

6545 SOUTH MAIN

LY-6484

Serving Hours: 5 p.m. to 11 p.m. daily
Noon til 9 p.m. Sunday

CLOSED TUESDAY

Rice Freshman Football

Two big home games here at the Rice Stadium feature the five-game schedule of the 1952 Rice Institute freshman football team. On Friday night, October 17th, the Owlets play the S.M.U. Colts and on Friday night, October 24th, they entertain the University of Texas first year team.

Several outstanding high school players of 1951 are among the squad learning the intricacies of the Rice grid system under the tutelage of head coach Charley Moore and Harold Stockbridge.

Tickets to the two big home games of the freshman team may be purchased at the ticket window at the Rice Gymnasium.

Here is the complete schedule for the Owlets for '52:

- 3 October (Friday) 2 p.m.
T.C.U. Freshmen at Fort Worth
- 10 October (Friday) 8 p.m.
Del Mar Junior College at Corpus Christi
- 17 October (Friday) 8 p.m.
S.M.U. Freshmen at Rice Stadium
- 24 October (Friday) 8 p.m.
Texas Freshmen at Rice Stadium
- 6 November (Thursday) 2 p.m.
Texas A. & M. Freshmen at College Station

UNIVERSAL

PACKING & GASKET CO.

Houston Owned
and Operated



Home of Universal, where packings and gaskets are manufactured for every industrial need.



"The Official Watch for Timing this Game is Longines . . . The World's Most Honored Watch"

Refreshing

DRINK

Coca-Cola

RICE INSTITUTE (Offense)

BY POSITIONS

LE Day 80	LT Golemon 75	LG Little 61	C Moore 56	RG Lee 62	RT Crockett 71	RE Bridges 89
QB Fenstermaker 26						
			LH D. Johnson 45	RH Stone 31		
FB Garbrecht 19						

T. C. U. (Defense)

BY POSITIONS

LE Martin 84	LT Williams 75	LG Glenn 73	RG Buck 64	RT R. C. Harris 74	RE Rogers 81
			LB Dublin 20	RB McEachern 54	
LH Fraleay 16		Safety Robinson 25			RH Morrow 11

See line-ups on page 20 for T. C. U. offense and Rice defense



FOR YOU

FIRST PREMIUM QUALITY CIGARETTE REGULAR AND KING-SIZE!

T. C. U. SQUAD

No.	Name	Pos.	Age	Ht.	Wt.
10	Glen Jones	B	20	5-11	170
11	Sammy Morrow	B	19	6-1	180
12	Jack Ray	B	22	5-11	175
16	Ronald Fraley	B	19	6-0	165
17	Dan Hallmark	B	19	6-0	190
19	Jack Meredith	B	19	5-11	175
20	Waylon Buchanan	B	18	6-2	190
21	John Harville	B	20	6-2	200
24	David Finney	B	19	6-2	170
25	M. Robinson	B	22	5-9	150
26	Roland Maclin	T	19	5-11	180
30	Ronald Dublin	B	21	6-1	195
31	Dan Morgan	G	19	5-8	200
34	Malvin Fowler	B	21	6-2	200
35	Bill Sitton	C	19	5-10	205
38	Billy Alexander	E	19	6-1	180
39	Bill Doty	B	20	6-1	198
40	H. C. Knox	B	21	5-8	170
42	Ronald Clinkscale	B	18	6-0	175
43	Danny Powell	B	19	6-1	185
45	Gilbert Bartosh	B	22	5-10	175
46	Darrell Simmonds	T	19	6-4	205
49	Ray McKown	B	20	6-1	185
51	Carlton McCormack	C	21	6-2	240
52	Dale Brakebill	C	19	6-0	195
54	Bob McEachern	C	23	5-11	195
60	Malcolm Wallace	G	19	5-11	195
62	Norman Jett	G	19	6-3	230
63	Hal Lambert	G	20	6-4	245
64	Bill Buck	G	23	6-1	210
66	Mickey Teems	G	21	6-1	198
68	Hubert Parrett	G	20	6-2	210
69	Jack Ramsay	G	21	6-0	195
70	Jack Temple	T	20	6-2	210
71	Tom Evans	T	19	6-2	225
72	Marshall Harris	T	21	6-1	200
73	James Glenn	T	22	6-2	210
74	R. C. Harris	T	19	6-3	200
75	Morgan Williams	T	19	6-2	200
77	Charles Wrenn	T	21	6-2	250
78	Bill Sikes	T	19	6-3	215
79	Claude Roach	T	19	6-1	245
91	Bill Stephenson	T	19	6-1	235
81	Charles Rogers	E	21	6-1	190
82	Ted Vaught	E	21	6-0	190
83	Weldon Dacus	E	19	6-4	200
84	Wayne Martin	E	21	6-2	195
85	John Crouch	E	20	6-2	200
87	Bob Blair	E	21	6-0	190



RICE INSTITUTE SQUAD

No.	Name	Pos.	Age	Ht.	Wt.
11	Horton Nesrsta, 54	B	21	5-9	149
15	Dickie Bob Haddox, 53	B	20	5-9	162
16	Bobby Warren, 55	B	20	5-7	165
19	Bob Garbrecht, 54	B	20	6-1	200
20	Oree "Buzzy" Bryan, 55	B	20	6-1	185
21	Atchley Proctor, 55	B	18	6-0	170
22	Billy Ed Daniels, 53	B	21	6-0	168
23	Bill Gaskamp, 54	B	20	5-10	167
24	Dan Drake, 54	B	21	6-2	190
25	Buddy Grantham, 54	B	19	6-2	175
26	Leroy Fenstermaker, 54	B	20	6-2	195
31	Morris Stone, 55	B	19	5-9	167
35	Bill Frazier, 53	B	21	5-10	165
36	Gordon Kellogg, 55	B	19	5-10	171
39	Don Costa, 55	B	19	6-0	194
40	Tommy Lynch, 55	B	20	6-0	182
42	Don Whittaker, 54	B	19	6-1	192
43	Carl Johnson, 54	B	19	5-11	179
45	David Johnson, 54	B	20	6-0	176
47	Dicky Moegle, 55	B	18	6-0	167
49	Gino Biasatti, 55	B	20	5-10	185
50	Ronald Lassiter, 55	C	20	6-2	202
54	Don Rhoden (c-c), 53	C	19	5-11	200
55	Leo Rucka, 54	C	21	6-2	204
56	Bobby Moore, 53	C	22	6-2	205
59	Jimmy Jax, 55	C	19	6-2	200
60	Kenny Paul, 55	G	19	5-11	195
61	Gene Little, 53	G	23	6-0	205
62	LaMar "Skip" Lee, 54	G	20	6-0	197
63	Jerry Fitzpatrick, 55	C	20	6-1	202
64	Walter Schleyer, 54	G	20	5-11	190
65	Dan Hart, 54	G	20	5-10	195
66	Dan "Hans" Wagner, 55	G	21	6-1	205
67	W. C. Treadway, 54	G	20	6-1	200
68	Larry Lundstedt, 55	G	18	5-11	188
69	James Timmons, 53	G	22	6-1	198
70	John Hudson, 54	T	19	6-0	212
71	Bill Crockett (c-c), 53	T	20	6-2	206
72	Max Schuebel, 54	T	20	6-1	210
73	LaVon Cox, 55	T	19	6-0	230
74	Robert Cashion, 55	T	20	6-1	217
75	Layton Golemon, 55	T	18	6-4	210
76	James Ellis, 55	T	19	6-0	200
77	Dan Winship, 55	G	19	6-0	215
78	Richard Chapman, 54	T	19	6-6	218
79	Buddy Edwards, 54	T	21	6-2	230
80	Jack Day, 53	E	22	6-0	195
81	Bill Fisk, 54	E	21	6-0	190
82	R. E. Worthham, 55	E	19	5-11	185
83	R. J. Schroeder, 54	E	20	6-4	186
84	James Heflin, 53	E	21	6-2	188
85	"Chuck" Stephenson, 53	E	18	6-1	180
86	LaDon Cox, 53	E	19	6-0	182
87	Murff Bledsoe, 53	E	19	6-0	176
88	Sammy Ward, 54	E	20	6-0	193
89	Blois Bridges, 54	E	20	6-1	180
90	Lamoine Holland, 55	E	19	6-2	185
91	Tommy Wilson, 54	E	19	6-2	187

...Much Milder

CHESTERFIELD

LARGEST SELLING CIGARETTE IN AMERICA'S COLLEGES



Delicious



T. C. U. (Offense)

BY POSITIONS

LE Blair 87	LT Wrenn 77	LG Ramsay 69	C McCormack 51	RG Wallace 60	RT Harris 72	RE Vaught 82
	LH Ray 12		QB McKown 49		RH Jones 10	
			FB Fowler 34			

RICE INSTITUTE (Defense)

BY POSITIONS

LE Hart 65	LT Schuebel 72	LG Chapman 78	RG Paul 60	RT Hudson 70	RE Fisk 81
	LLB Rhoden 54			RLB Rucka 55	
LH Kellogg 36				RH C. Johnson 43	
		S Nesrsta 11			

See line-ups on page 17 for T. C. U. defense and Rice offense

1952 RICE OWL SENIORS



Playing in their final home game today are these seniors on the Rice squad. Left to right, front row: Bobby Moore, center; "Hans" Wagner, end; Don Rhoden, line backer and co-captain; Bill Crockett, tackle and co-captain; Dickie Bob Haddox, halfback. Back row: James Timmons, tackle; Billy Ed Daniels, halfback; Jack Day, end; Bill Frazier, halfback; Gene Little, guard.

COMPLIMENTS

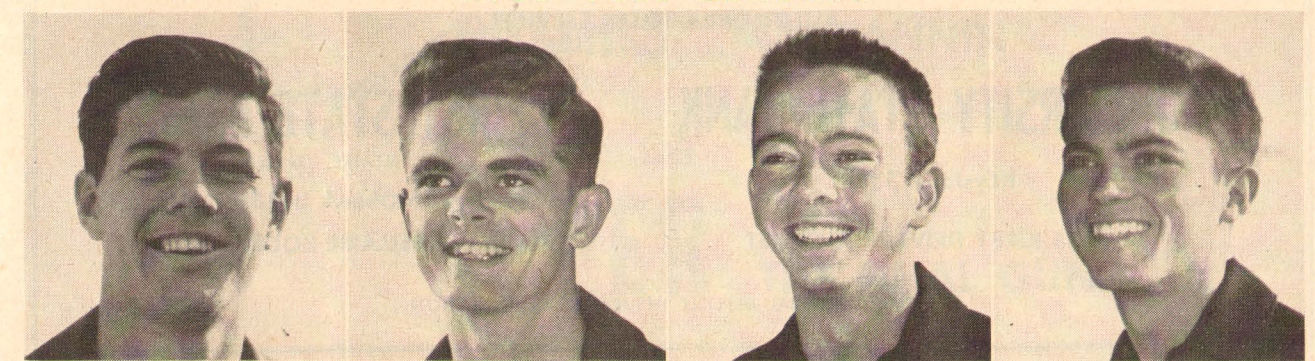
OF

HERRIN TRANSPORTATION COMPANY

2300 WALKER

FA-5111

RICE YELL LEADERS



Bill Berryman

Allen Pierce

T. F. Arner

Bill Harrison

"The Official Watch for Timing this Game is Longines . . . The World's Most Honored Watch"

QUINBY EMPLOYMENT SERVICE

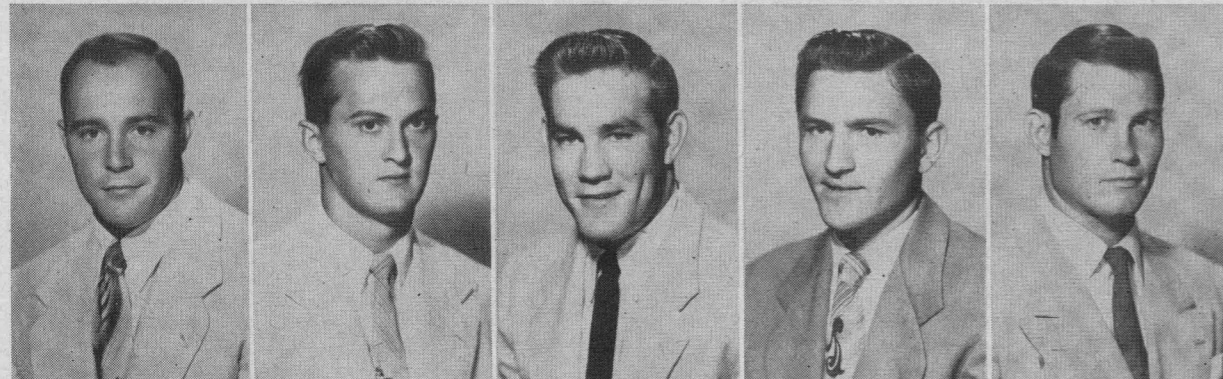
"A Name Worth Remembering"

You can benefit from our many years
experience in the personnel field
Executive, Office, Sales, and Technical Personnel

Member National Employment Board, Chamber of Commerce
and National Association Personnel Consultants

409 Bankers Mortgage Building

Houston 2, Texas



49—Gino Biasatti

50—Ronald Lassiter

54—Don Rhoden (c-c)

55—Leo Rucka

56—Bobby Moore



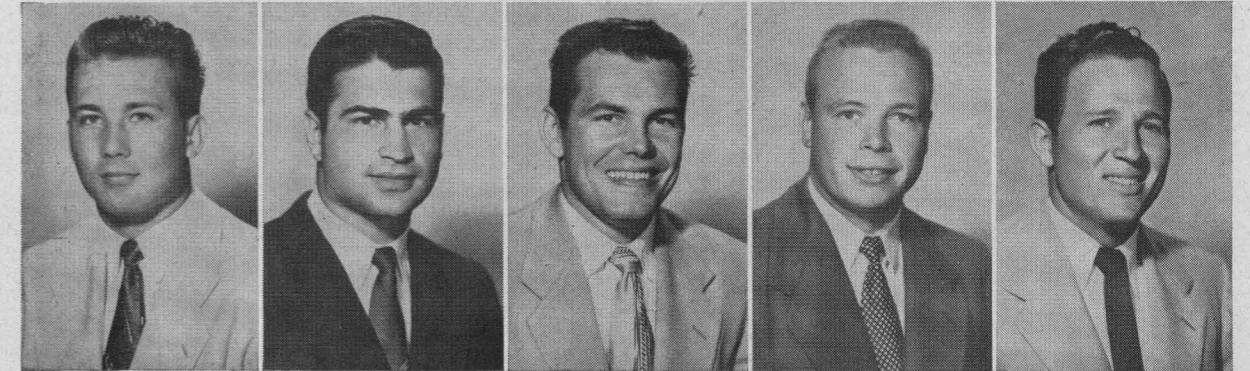
2020 Main Street

"THE BANK OF CORDIALITY"

Member Federal Deposit Insurance Corporation

BEST WISHES
TO THE OWLS

W. S. Bellows Construction Corp.



59—Jimmy Jax

60—Kenny Paul

61—Gene Little

62—LaMar "Skip" Lee

63—Jerry Fitzpatrick



COMPLETE
METROPOLITAN
SERVICE

WITH
RESIDENTIAL
CONVENIENCE



Serving Southwest Houston

West University Place, Southside Place and Bellaire

AUTOMOBILE TELLER SERVICE

UNIVERSITY STATE BANK

KEystone 5574

6135 KIRBY DRIVE at AMHERST

FIRST STATE BANK

BELLAIRE, TEXAS

MOhawk 3413

5123 BELLAIRE BOULEVARD

MEMBER FEDERAL DEPOSIT INSURANCE CORPORATION

MAKE YOUR GOAL
BEFORE THE KICKOFF
AT

Cousin's

4401 FANNIN

OR

AFTER

THE FINAL GUN

The Rice Athletic Association Would Appreciate Your Patronizing Our Advertisers

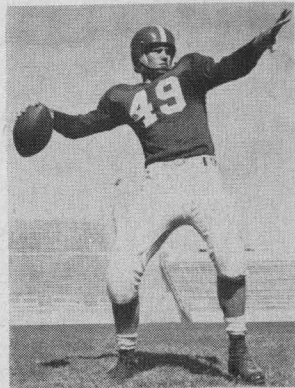


Dr. M. E. SADLER
President, T. C. U.



ADMINISTRATION BUILDING

TEXAS CHRISTIAN UNIVERSITY



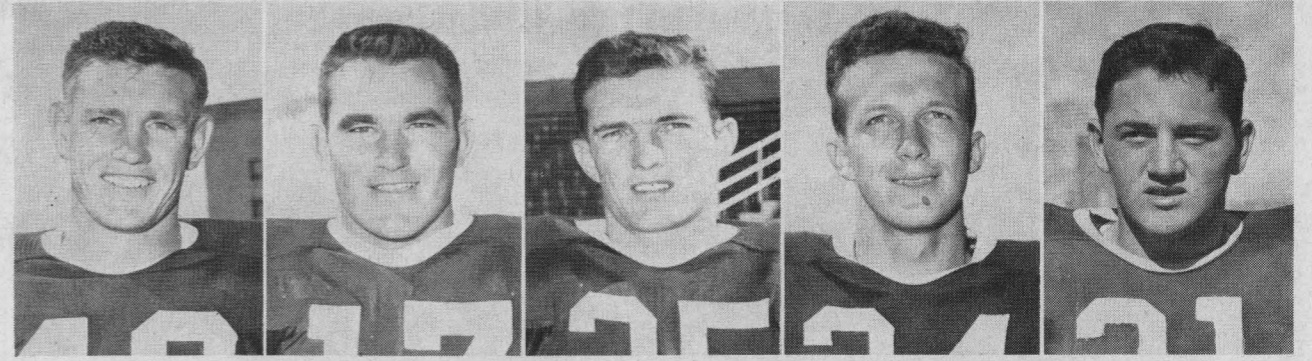
RAY McKOWN
Quarterback



L. R. "Dutch" MEYER
Head Football Coach
and Athletic Director



TED VAUGHT
End, Co-Captain

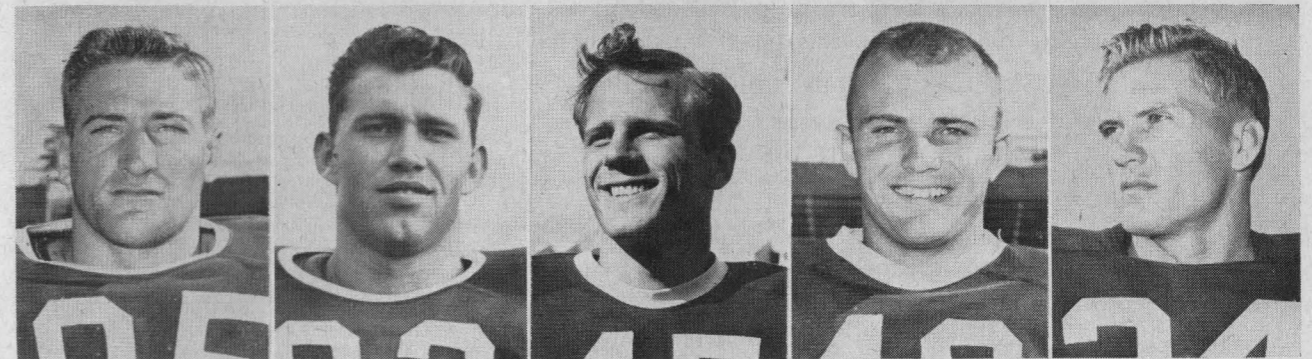


49—Ray McKown 17—Danny Hallmark 25—Marshall Robinson 24—David Finney 21—John Harville

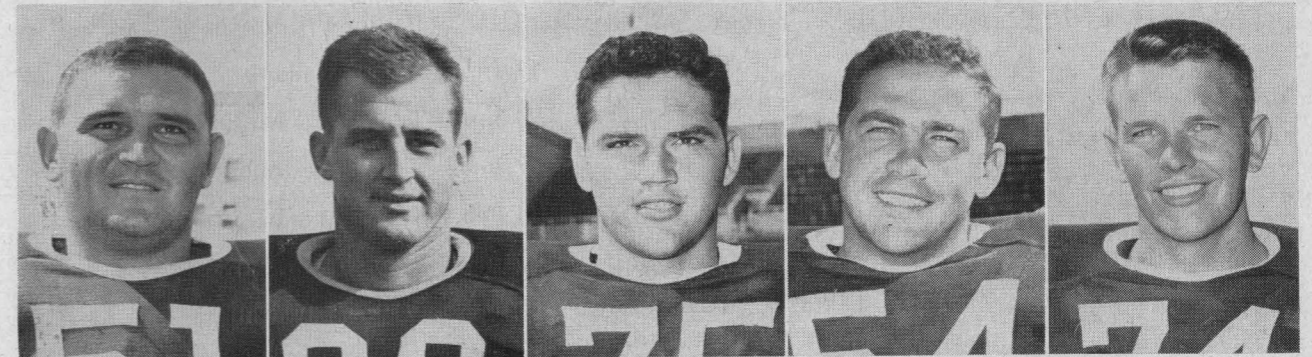


12—Jack Ray 84—Wayne Martin 87—Bob Blair 11—Sammy Morrow 16—Ronald Fraley

T.C.U. HORNED FROGS

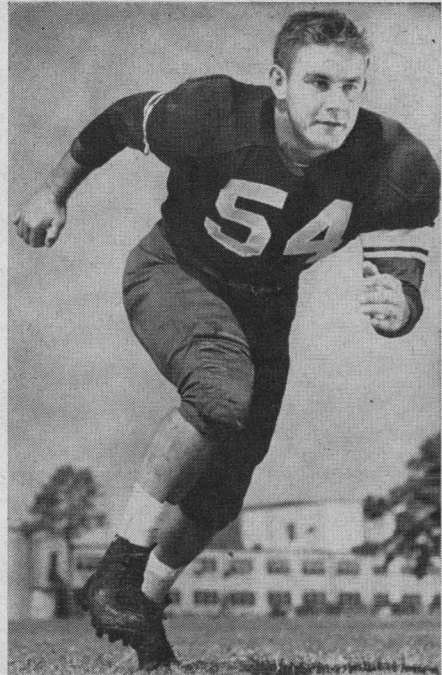


85—Johnny Crouch 82—Teddy Vaught 45—Gilbert Bartosh 42—Ronald Clinkscale 34—Malvin Fowler



51—Carlton McCormack 63—Hal Lambert 75—Morgan Williams 54—Bobby McEachern 74—R. C. Harris

1952 CO-CAPTAINS OF RICE INSTITUTE OWLS



DON RHODEN



BILL CROCKETT

RICE OWLS VARSITY BASKETBALL SCHEDULE

All home games of coach Don Suman's Owls are played on Autry Court in the new Rice Gymnasium, completed in 1951, which seats 6,000 fans for basketball games.

- 11 Dec. (Thur.) Sam Houston State at Huntsville
- 13 Dec. (Sat.) Kansas University at Houston
- 18 Dec. (Thur.) Tulane University at Houston
- 20 Dec. (Sat.) Colorado A.&M. at Houston
- 23 Dec. (Tues.) Stephen F. Austin at Nacogdoches
- 26-30 December—Owls play three games in S.W.C. tournament at Dallas
- 6 Jan. (Tues.) *Southern Methodist at Houston
- 13 Jan. (Tues.) *Baylor University at Waco
- 17 Jan. (Sat.) *Arkansas University at Fayetteville
- 20 Jan. (Tues.) *Texas Christian at Houston
- 24 Jan. (Sat.) *Texas A.&M. at Houston
- 5 Feb. (Thur.) Sam Houston State at Houston
- 7 Feb. (Sat.) *University of Texas at Austin
- 9 Feb. (Mon.) *Arkansas University at Houston
- 14 Feb. (Sat.) *Texas A.&M. at College Station
- 17 Feb. (Tues.) *Baylor University at Houston
- 21 Feb. (Sat.) *Texas Christian at Fort Worth
- 24 Feb. (Tues.) *University of Texas at Houston
- 3 Mar. (Tues.) *Southern Methodist at Dallas

* Southwest Conference Game.

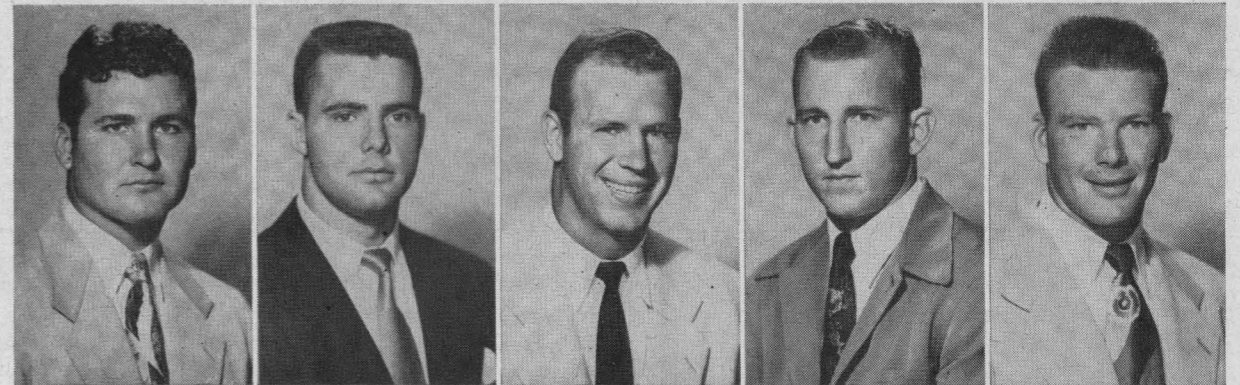
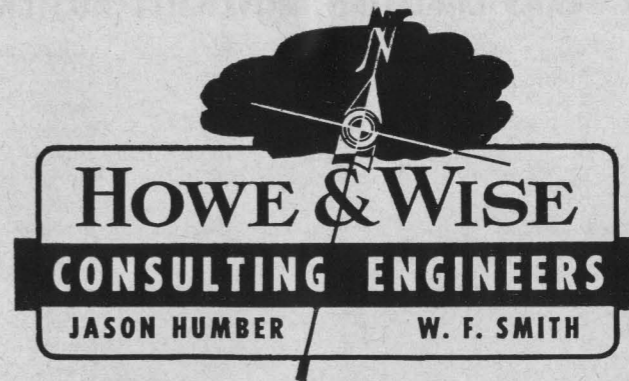
Freshman Basketball Schedule

The 1952-53 Rice freshman basketball team will play six of its 12 games at home as preliminary contests to varsity games at Autry Court in the Rice Gymnasium. Charles Moore is freshman cage coach. Here is the schedule:

- 11 Dec.—Wharton Jr. College at Wharton
- 13 Dec.—Victoria Jr. College at Houston
- 18 Dec.—Allen Academy at Houston
- 20 Dec.—Wharton Jr. College at Houston
- 13 Jan.—Baylor Freshmen at Waco
- 17 Jan.—Allen Academy at Bryan
- 24 Jan.—Texas A. & M. Freshmen at Houston
- 7 Feb.—Texas Freshmen at Austin
- 14 Feb.—Texas A. & M. Freshmen at College Station
- 17 Feb. Baylor Freshmen at Houston
- 20 Feb.—Victoria Jr. College at Victoria
- 24 Feb.—Texas Freshmen at Houston

Jason Humber
Class of '22

W. F. Smith
Class of '26



64—Walter Schleyer

65—Dan Hart

66—Dan "Hans" Wagner

67—W. C. Treadway

68—Larry Lundstedt

Complete Insurance Coverage

American General Group

American General Investment Corporation

American General Life Insurance Company

American General Insurance Company

RUSK BUILDING

HOUSTON, TEXAS

The Rice Athletic Association Would Appreciate Your Patronizing Our Advertisers

1952 TEXAS CHRISTIAN UNIVERSITY ROSTER

No.	Player	Pos.	Age	Ht.	Wt.	Class	Hometown
10	Glen Jones	B	21	5-11	170	Junior	Ft. Worth, Texas
11	Sammy Morrow	B	19	6-1	180	Junior	Paris, Texas
12	Jack Ray	B	22	5-11	180	Senior	McKinney, Texas
16	Ronald Fraley	B	19	6-0	165	Junior	Sweetwater, Texas
17	Danny Hallmark	B	19	6-0	190	Junior	Ballinger, Texas
19	Billy Meredith	B	19	5-11	175	Soph.	Mt. Vernon, Texas
20	Waylon Buchanan	B	18	6-2	190	Soph.	Naples, Texas
21	John Harville	B	20	6-2	200	Senior	Ft. Worth, Texas
24	David Finney	B	19	6-2	170	Soph.	Ft. Worth, Texas
25	Marshall Robinson	B	22	5-9	150	Senior	Ft. Worth, Texas
26	Roland Maclin	T	19	5-11	185	Soph.	Ft. Worth, Texas
30	Ronald Dublin	B	21	6-1	195	Junior	Artesia, N.M.
31	Dan Morgan	G	19	5-8	205	Soph.	Jackson, Miss
33	Johnnie Worrell	B	19	6-1	200	Junior	Iowa Park, Texas
34	Malvin Fowler	B	21	6-2	200	Junior	Van, Texas
35	Bill Sitton	C	19	5-10	205	Junior	Ft. Worth, Texas
39	Bill Doty	B	20	6-1	180	Junior	Wilson, Okla.
40	H. C. Knox	B	20	5-11	170	Junior	Graham, Texas
41	Bill Fagan	E	19	5-11	175	Junior	Ft. Worth, Texas
42	Ronald Clinkscale	B	18	6-0	170	Soph.	Ft. Worth, Texas
43	Danny Powell	B	19	6-2	185	Junior	Archer City, Texas
45	Gilbert Bartosh	B	22	5-10	170	Senior	Granger, Texas
49	Ray McKown	B	20	6-1	175	Junior	Dumas, Texas
51	Carlton McCormack	C	21	6-2	245	Senior	Henderson, Texas
52	Dale Brakebill	C	19	6-0	190	Soph.	Mt. Vernon

1952 RICE INSTITUTE OWLS VARSITY FOOTBALL ROSTER

No.	Name	Pos.	Wt.	Ht.	Age	Class	Exp.	Home Town
*11	Horton Nestrta	LH	149	5' 9"	21	Junior	1 VL	San Antonio
15	Dickie Bob Haddox	RH	162	5' 9"	20	Senior	2 VL	Navasota
16	Bobby Warren	LH	165	5' 7"	20	Soph.	Sqd.	Austin
19	Bob Garbrecht	FB	200	6' 1"	20	Junior	Sqd.	New York City, N.Y.
20	Oree "Buzzy" Bryan	QB	185	6' 1"	20	Soph.	Sqd.	Houston (San Jacinto)
21	Atchley Proctor	QB	170	6' 0"	18	Soph.	FL	DeKalb
22	Billy Ed Daniels	LH	168	6' 0"	21	Senior	1 VL	Kerrville
23	Bill Gaskamp	RH	167	5' 10"	20	Junior	J.C.	Brenham
24	Dan Drake	QB	190	6' 2"	21	Junior	1 VL	Fort Worth
25	Buddy Grantham	QB	175	6' 2"	19	Junior	Sqd.	Grand Prairie
26	Leroy Fenstemaker	QB	195	6' 2"	20	Junior	Sqd.	Llano
31	Morris Stone	RH	167	5' 9"	19	Soph.	FL	Kerrville
35	Bill Frazier	LH	165	5' 10"	21	Senior	1 VL	Padadena
36	Gordon Kellogg	LH	171	5' 10"	19	Soph.	FL	Baytown
39	Don Costa	LH	194	6' 0"	19	Soph.	FL	Houston (St. Thomas)
40	Tommy Lynch	FB	182	6' 0"	20	Soph.	FL	Houston (San Jacinto)
42	Don Whittaker	FB	192	6' 1"	19	Junior	Sqd.	Dallas
43	Carl Johnson	RH	179	5' 11"	19	Junior	Sqd.	Houston (San Jacinto)
45	David "Kosse" Johnson	FB	176	6' 0"	20	Junior	1 VL	Baytown
47	Dicky Moegle	LH	167	6' 0"	18	Soph.	FL	Taylor
49	Gino Biasatti	FB	185	5' 10"	20	Soph.	Sqd.	Dallas
50	Ronald Lassiter	C	202	6' 2"	20	Soph.	FL	Houston (San Jacinto)
54	Don Rhoden (c-c)	C	200	5' 11"	19	Senior	2 VL	Kerrville
55	Leo Rucka	C	204	6' 2"	21	Junior	1 VL	Crosby
56	Bobby Moore	C	205	6' 2"	22	Senior	2 VL	Amarillo
59	Jimmy Jax	C	200	6' 2"	19	Soph.	FL	Houston (Lamar)
60	Kenny Paul	RG	195	5' 11"	19	Soph.	FL	Houston (Lamar)
61	Gene Little	LG	205	6' 0"	23	Senior	2 VL	Corpus Christi

Always A Winning Combination!



DRILLING STABILIZERS



KINNEAR COMBINATION BITS



BURRIS KEY SEAT WIPERS

AUTO FLEX-ECCENTRIC GUIDE CASING MILL



A-1 BIT & TOOL COMPANY

CHECK



VALVES



WATER CONTROL VALVE



JET BITS



WIRE LINE CORE BARREL

SIDE CORE



WALL BARRELS



SURE SHOT DEVIATION RECORDING INSTRUMENT

MILLING



TOOLS

9000 ALMEDA ROAD

HOUSTON TEXAS

54	Bobby McEachern	B	23	5-11	195	Senior	Austin, Texas
60	Malcolm Wallace	G	19	5-11	195	Soph.	Greenville, Texas
61	Don Martin	G	21	6-1	205	Senior	Iraan, Texas
62	Norman Jett	G	19	6-3	215	Soph.	Seagoville, Texas
63	Hal Lambert	G	20	6-4	230	Junior	Port Arthur, Texas
64	Bill Buck	G	23	6-1	210	Senior	Austin, Texas
66	Mickey Teems	G	21	6-1	190	Junior	Ft. Worth, Texas
68	Hubert Parrett	G	20	6-2	205	Senior	Dallas, Texas
69	Jack Ramsey	G	21	6-0	195	Junior	Henderson, Texas
70	Jack Temple	T	20	6-2	200	Junior	Childress, Texas
71	Kenneth McQueen	T	19	6-2	225	Junior	Memphis, Texas
72	Marshall Harris	T	21	6-1	200	Senior	DeLand, Fla.
73	James Glenn	T	22	6-2	210	Senior	Mineral Wells, Texas
74	R. C. Harris	T	19	6-3	200	Junior	Vernon, Texas
75	Morgan Williams	T	19	6-2	205	Junior	Ft. Worth, Texas
76	Tom Evans	T	21	6-1	200	Junior	Corpus Christi, Texas
77	Charles Wrenn	T	21	6-2	250	Junior	Happy, Texas
78	Bill Sikes	T	19	6-3	220	Junior	Eastland, Texas
79	Claude Roach	T	19	6-1	240	Soph.	Ft. Worth, Texas
80	Alton Owens	B	22	6-0	170	Junior	Duncan, Okla.
81	Charles Rogers	E	21	6-1	185	Senior	Childress, Texas
82	Teddy Vaught	E	21	6-0	195	Senior	Lubbock, Texas
83	Weldon Dacus	E	19	6-4	190	Soph.	Abilene, Texas
84	Wayne Martin	E	21	6-2	195	Senior	Shamrock, Texas
85	Johnny Crouch	E	20	6-2	200	Soph.	Vernon, Texas
86	Don Ford	E	20	6-0	180	Junior	Farwell, Texas
87	Bob Blair	E	22	6-2	190	Senior	Texarkana, Texas
88	Albert Burgin	E	20	6-0	185	Junior	Ft. Worth, Texas
89	Bill Hill	E	21	6-1	195	Senior	Dallas, Texas

"The Official Watch for Timing this Game is Longines . . . The World's Most Honored Watch"

62	LaMar "Skip" Lee	RG	197	6' 0"	20	Junior	Sqd.	Huntsville
63	Jerry Fitzpatrick	C	202	6' 1"	20	Soph.	FL	Harlingen
64	Walter Schleyer	RG	190	5' 11"	20	Junior	Sqd.	San Angelo
65	Dan Hart	RG	195	5' 10"	20	Junior	1 VL	Houston (Milby)
66	Dan "Hans" Wagner	RG	205	6' 1"	21	Senior	1 VL	Schulenberg
67	W. C. Treadway	LG	200	6' 1"	20	Junior	1 VL	Houston (San Jacinto)
68	Larry Lundstedt	LG	188	5' 11"	18	Soph.	FL	Austin
69	James Timmons	LG	198	6' 1"	22	Senior	1 VL	Sweetwater
70	John Hudson	LT	212	6' 0"	19	Junior	1 VL	Center
71	Bill Crockett (c-c)	RT	206	6' 2"	20	Senior	2 VL	Bonham
72	Max Schuebel	LT	210	6' 1"	20	Junior	1 VL	Houston (Reagan)
73	LaVon Cox	RT	230	6' 0"	19	Soph.	FL	Galena Park
74	Robert Cashion	RT	217	6' 1"	20	Soph.	FL	Mexia
75	Layton Golemon	LT	210	6' 4"	18	Soph.	FL	Kerrville
76	James Ellis	LT	200	6' 0"	19	Soph.	FL	West Columbia
77	Dan Winship	LG	215	6' 0"	19	Soph.	Sqd.	Houston (Reagan)
78	Richard Chapman	LT	218	6' 6"	19	Junior	1 VL	Waxahachie
79	Buddy Edwards	RT	230	6' 2"	21	Junior	Sqd.	Texarkana, Ark.
80	Jack Day	RE	195	6' 0"	22	Senior	2 VL	Galena Park
81	Bill Fisk	LE	190	6' 0"	21	Junior	1 VL	Irving
82	R. E. Wortham	RE	185	5' 11"	19	Soph.	FL	Klein
83	R. J. Schroeder	LE	186	6' 4"	20	Junior	1 VL	East Bernard
84	James Heflin	LE	188	6' 2"	21	Soph.	Sqd.	Mart
85	"Chuck" Stephenson	LE	180	6' 1"	18	Soph.	FL	Bloomington
86	LaDon Cox	RE	182	6' 0"	19	Soph.	FL	Galena Park
87	Murff Bledsoe	RE	176	6' 0"	19	Soph.	FL	Pearsall
88	Sammy Ward	LE	193	6' 0"	20	Junior	Sqd.	Laredo
89	Blois Bridges	LE	180	6' 1"	20	Junior	Sqd.	Grand Prairie
90	Lamoine Holland	RE	185	6' 2"	19	Soph.	FL	San Antonio
91	Tommy Wilson	RE	187	6' 2"	19	Junior	J.C.	Graham

"The Official Watch for Timing this Game is Longines . . . The World's Most Honored Watch"

AT LUNCH OR DINNER

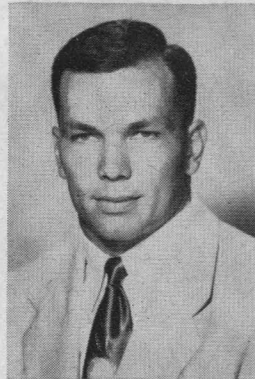
You can always enjoy a delicious meal in the Warwick's Famous Crystal Dining Room

A PLEASURE TO SERVE YOU

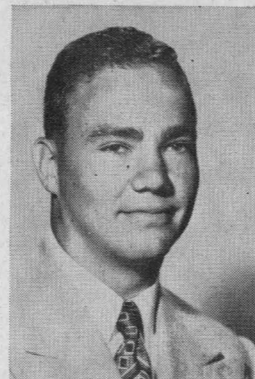


R. T. CULLATHER, Manager

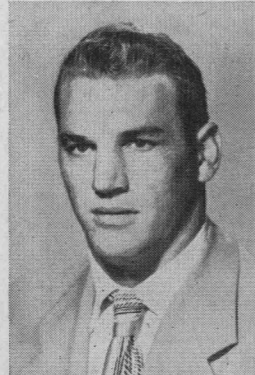
WARWICK HOTEL
AND APARTMENTS
Houston 1, Texas



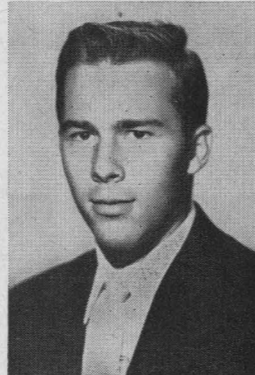
69—James Timmons



70—John Hudson



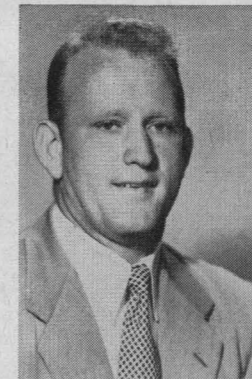
71—Bill Crockett (c-c)



72—Max Schuebel



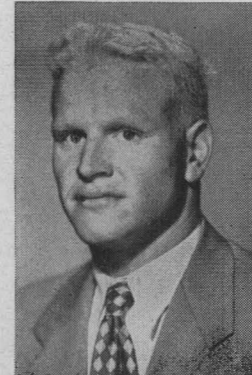
73—LaVon Cox



74—Robert Cashion



75—Layton Golemon



76—James Ellis



FANNIN AT TEXAS

912 MAIN STREET

Salutes the Rice Owls '52

"Stay Dry When the Weather is Wet"

Light weight, compact
Plastic Spectator

PONCHO
WITH HOOD

Fits into your purse
or pocket.

1.25

ORDER BY MAIL

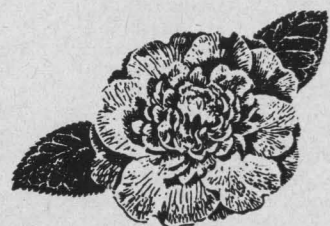
PHONE PR-2231

Oshman's Athletic Dept.



Mmmmm... **CAMELLIA** Ice Cream!

Enjoy catering-quality Camellia Ice Cream often . . . it's a great hit for any occasion . . . after-the-game snacks . . . mealtime dessert or party treat. Buy the large family-size carton . . . or individual cube shaped cartons for personalized flavor selection.



CAMELLIA
ice cream

For the name and address of your nearest dealer, call JUstin 0581.

Drinks in Stadium are cooled with
Texas Ice "Sized Ice"

TEXAS ICE & FUEL
COMPANY

6301 Harrisburg

Wayside 2154

The Rice Athletic Association Would Appreciate Your Patronizing Our Advertisers

☆ *The Southwest's
Finest
and reasonable, too!*

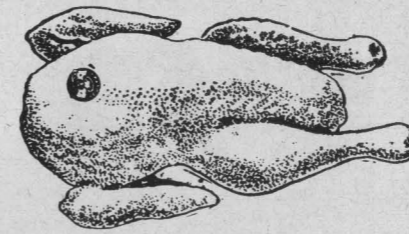
WELDON *Cafeteria*
4916 South Main

- Open Daily—11:00 a.m. through 8:30 p.m.
- Two Free Parking Lots Adjoining

South End Building Materials Co.

READY MIX CONCRETE
SAND — GRAVEL — CEMENT

South Houston Plant 5102 Galveston Road Phone MI-3328	Deer Park Plant Deer Park, Texas Phone GR-9-2251	Kirby Drive Plant 4830 Kirby Drive Phone LY-9131
---	--	--



Frederick's Best Tagged Fryers
FRESH, PLUMP, CLEAN
They Sell Themselves

FREDERICK POULTRY & EGG CO.
Vernon C. Fredericks, Sr., Pres.-Mgr.
1817 CENTER • PREston 5195



77—Dan Winship 78—Richard Chapman 79—Buddy Edwards 80—Jack Day 81—Bill Fisk

THREE SENIOR OWL BACKS



Dickie Bob Haddox



Bill Frazier



Billy Ed Daniels



WITHIN REACH!

the **RIGHT** way to
plan a play...
or a trip

A coach designs every play to go all the way . . . the same as today's bus traveler does when he chooses CONTINENTAL TRAILWAYS thru bus service between many of the metropolitan centers of America. Whether your trip be to the next town, or across the nation, make your first choice Continental!

And for weekend football trips, charter a big Continental Silverliner and follow your team wherever they play.

CONTINENTAL TRAILWAYS

"YOUR HIGHWAY HOST FROM COAST TO COAST"

At the games it's

**JASMINE FRANKS AND
HAM SANDWICHES**

(Always Government Inspected)

HOUSTON PACKING COMPANY • 3301 NAVIGATION • PREston 2361

The Best **FRIED CHICKEN** in Town

Famous throughout the Southwest for its tenderness and flavor. Fast service, low prices. Box orders to take out at no extra cost.



6441 SOUTH MAIN in HOUSTON

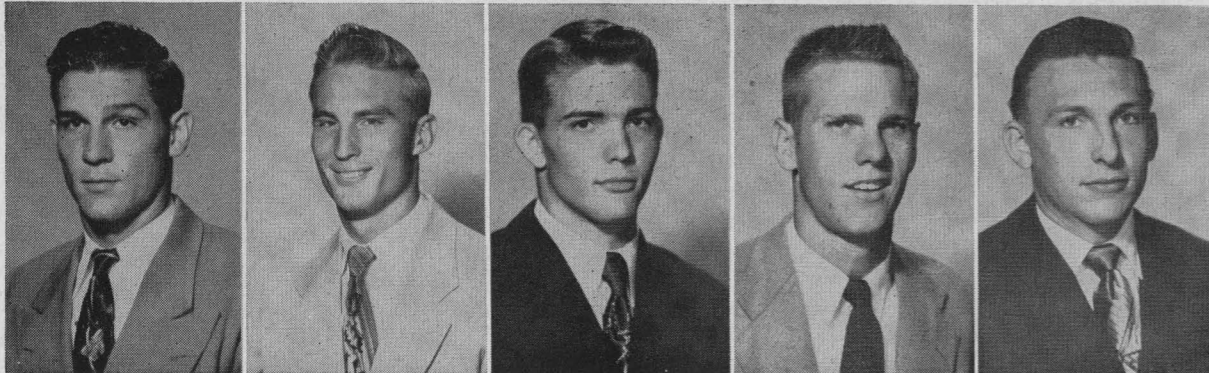
The Rice Athletic Association Would Appreciate Your Patronizing Our Advertisers

PEIDIEN IRON & STEEL CO.

ESTABLISHED 1890

WHOLESALE

HOUSTON, TEXAS



82—R. E. Wortham

83—R. J. Schroeder

84—James Heflin

85 "Chuck" Stephenson

86—LaDon Cox

UNIVERSITY BLVD.
RICE
GREENBRIAR
10 minutes
SO. SHEPHERD DR.
2015 W. GRAY

明宮
Listen to the **SCORES** right after the game on **KPRC** brought to you by the **MING PALACE**

And if you want to make a score, **DAD**, treat the family to **GOOD** Chinese and American **FOOD** tonight at the **MING PALACE**

MING PALACE
The House of Good Food

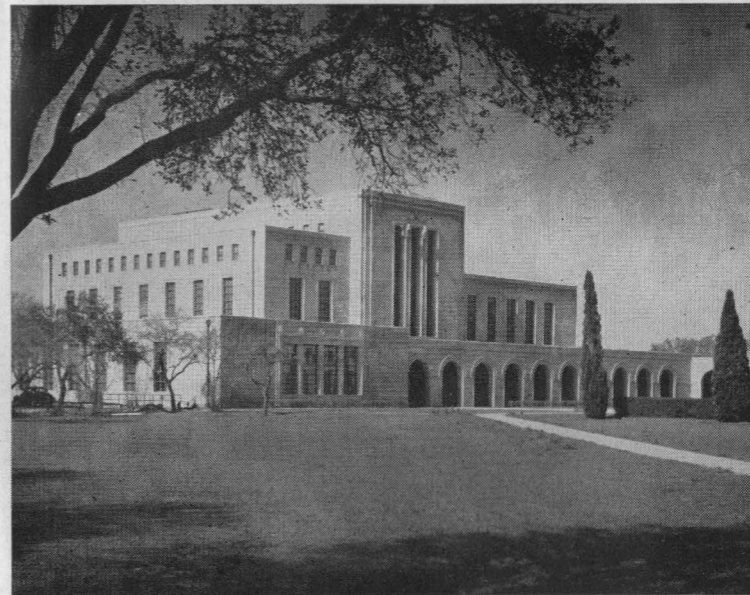
for . . .

Office Forms • Folders
Booklets • Color Printing
Letterpress and Offset
One-Time Carbon Forms
Continuous • Fanfold
Register Forms

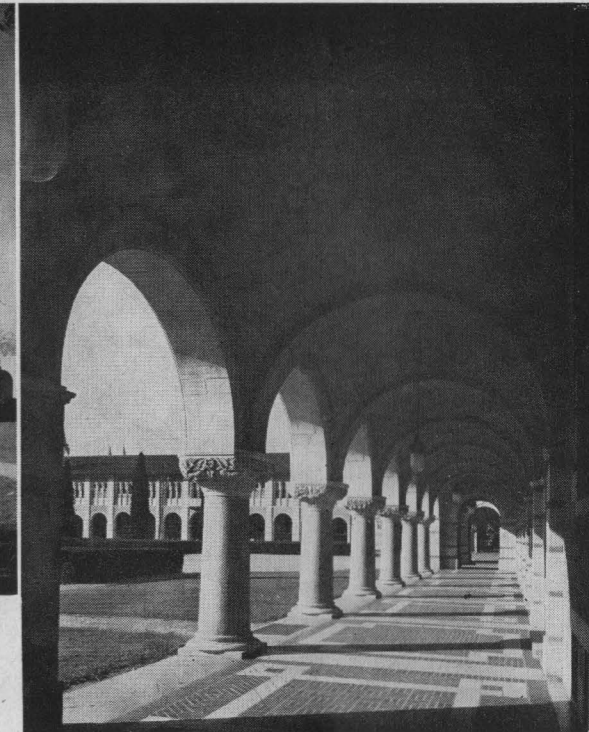


THE REIN CO.

Victor 2611



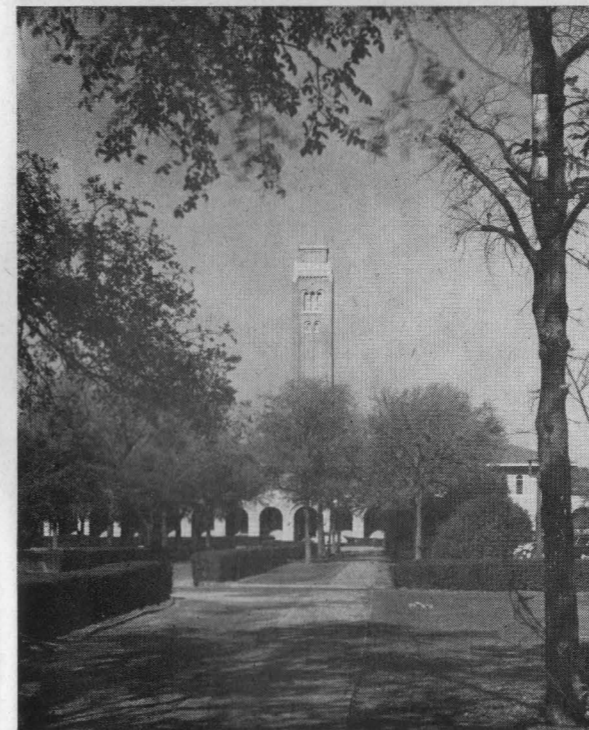
Fendren Library



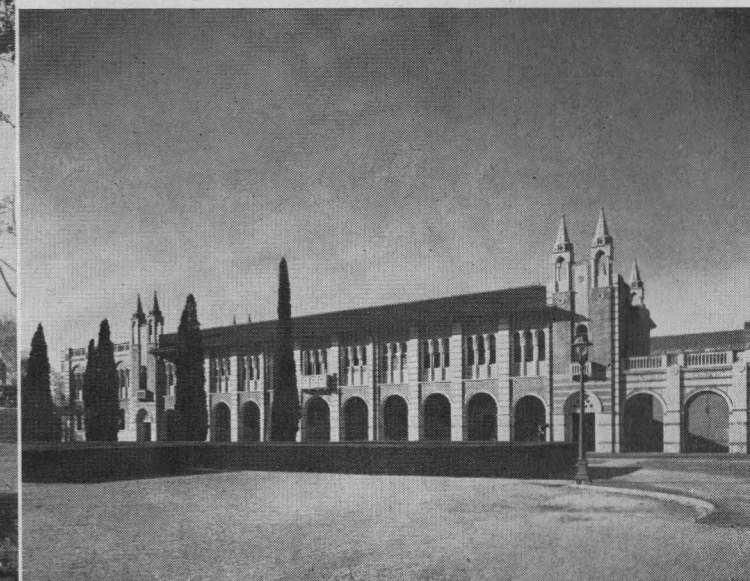
Cloisters of Lovett Hall

Campus Scenes

OF THE RICE INSTITUTE



Engineering Building and Campanile



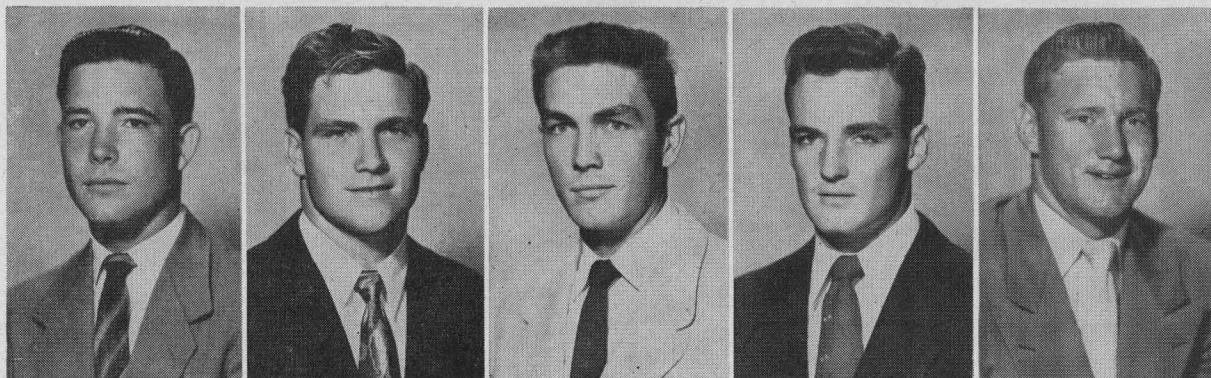
Physics Building

The "Fresh Up"
Family Drink!



You like it...
it likes you

BUY A CASE TODAY!



87—Murff Bledsoe

88—Sammy Ward

89—Blois Bridges

90—Lamoine Holland

91—Tommy Wilson

CHAMPIONSHIP AND BOWL RECORD OF THE RICE OWLS

Rice Institute has fielded a football team for forty years, and in that time the Owls have provided many thrills for grid fans of the Southwest and the nation.

The Owls have played from coast to coast with intersectional competition against teams representing some of the country's finest schools.

Many honors have come the way of Rice teams in the past. The Owls have won the Southwest Conference championship on three occasions—in 1934, 1937, and 1949—and shared the title with Arkansas in 1946.

Rice has been represented in three major bowl games, and the Owls were victorious on each occasion. The 1937 team beat Colorado 28-14 in the Cotton Bowl classic, the 1946 club stopped Tennessee 8-0 in the Orange Bowl, and the 1949 team trimmed the North Carolina Tarheels 27-13 in the Cotton Bowl.

In addition, many other honors have come the way of Rice players and coaches. Several players have been named to All-American teams, and a host of Owls have been accorded All-Southwest Conference honors.

Special honors of last year saw end Bill Howton selected on many All-American teams and invited to play for the College All-Stars, while along with teammate end Sonny McCurry he played under Rice coach Jess Neely in the East-West Shrine game for the benefit of crippled children last December.

Represented for National Advertising by DON SPENCER COMPANY, INC., 271 Madison Ave., New York 16, N.Y.

ENJOY THE GAME MORE WITH

BINOCULARS

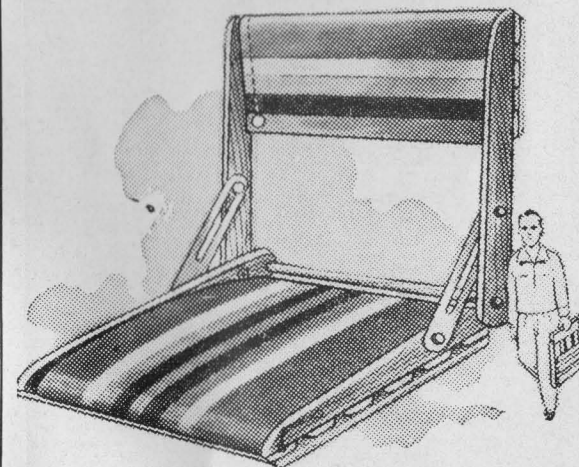
And

FIELD GLASSES



Holt's carry a complete line of fine nationally known binoculars and field glasses, all sizes, all prices.

Come in our store at your first opportunity. Visit our camera shop and let us show you these fine glasses. . . .



"Tak-Along" stadium seat and backrest, fine hardwood construction, kapok seat and back, durable fancy striped canvas, hours of comfort.



"I'd walk a mile for a
CAMEL"



*So Mild—
So Flavorful!*

