



The TEXAS TECH Game

RICE CAMPUS ☆ SEPTEMBER 27, 1952

OFFICIAL PROGRAM — TWENTY FIVE CENTS



DOROTHY COLLINS,
"The Sweetheart of Lucky Strike,"
says:

Be Happy-
GO LUCKY!

**LUCKIES
TASTE
BETTER!**



L.S./M.F.T.-Lucky Strike Means Fine Tobacco

COPR., THE AMERICAN TOBACCO COMPANY

**ONLY ONE
CAN BE
BEST**

*Taste Tru-Ade
and judge for yourself*



THE
Natural
SOFT DRINK

SOUTH TEXAS NATIONAL BANK

Progressive Banking Service Since 1886

213 MAIN STREET • HOUSTON, TEXAS
MEMBER FEDERAL DEPOSIT INSURANCE CORPORATION



Satisfy Your Hunger at



Bill Williams

6515 SOUTH MAIN
OPPOSITE RICE INSTITUTE
GOOD FOOD TO FIT YOUR APPETITE AND YOUR POCKETBOOK

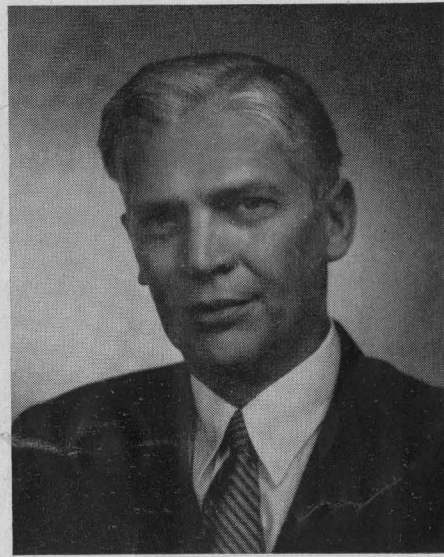
The Rice Athletic Association Would Appreciate Your Patronizing Our Advertisers

BOARD OF GOVERNORS OF THE RICE INSTITUTE

TRUSTEES



GUS S. WORTHAM



GEORGE R. BROWN
Chairman



LAMAR FLEMING, JR.



WILLIAM A. KIRKLAND



J. NEWTON RAYZOR



DR. FREDERICK R. LUMMIS



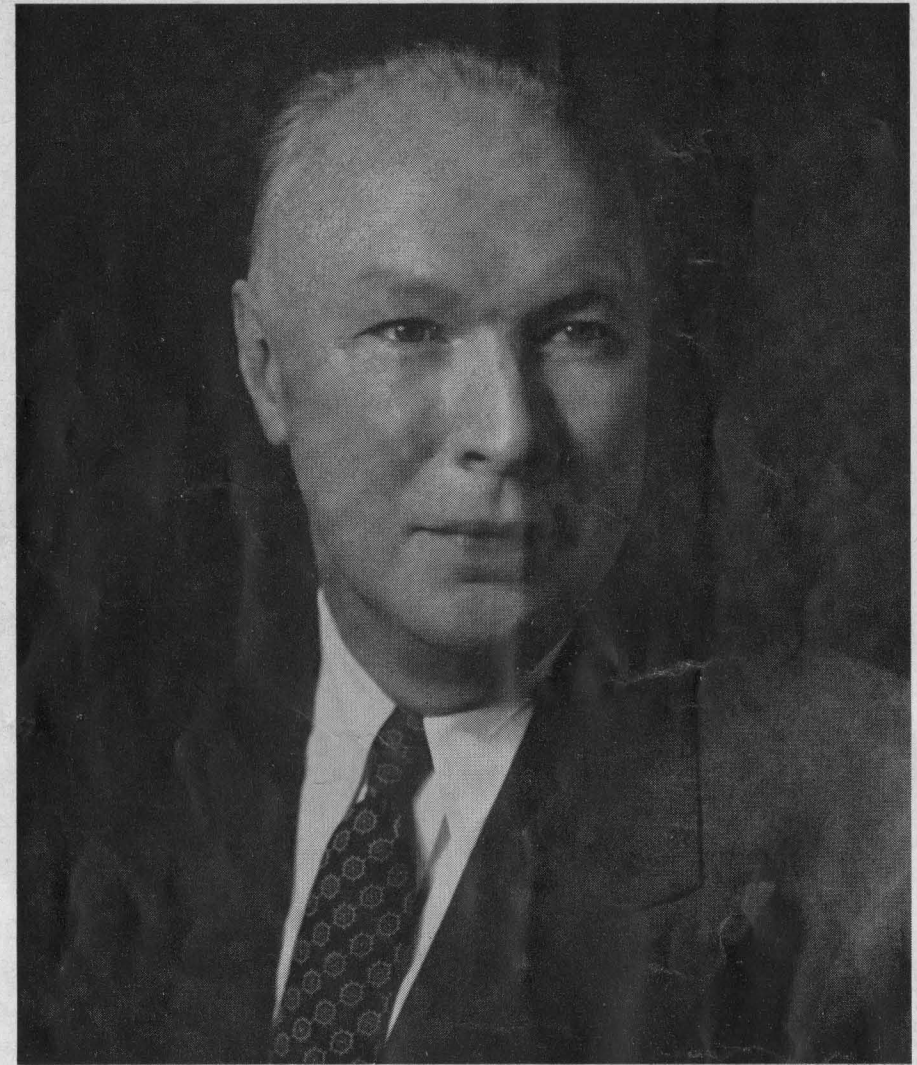
JOHN S. IVY

TERM MEMBERS

HERBERT ALLEN
ROBERT P. DOHERTY

FRANCIS T. FENDLEY
H. MALCOLM LOVETT

ROBERT H. RAY
HARMON WHITTINGTON



DR. WILLIAM V. HOUSTON
President, The Rice Institute

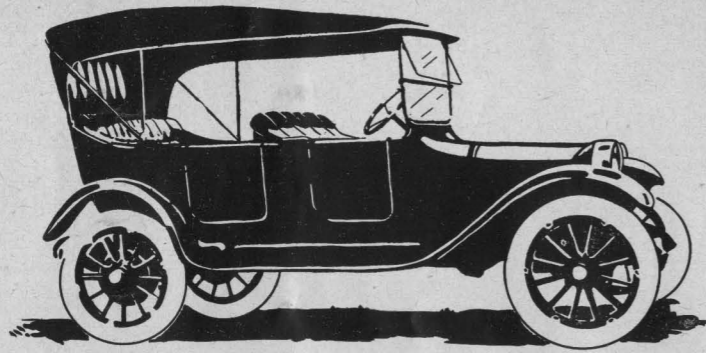
Just forty years ago the first class of freshmen entered the Rice Institute. That first freshman class organized a football team and played a schedule involving some satisfying victories along with some overwhelming, if not spectacular, defeats.

Today the Rice Institute welcomes you, its guests, to a stadium which bears little resemblance to the ball park in which our first games were played. Our physical facilities have grown with the city of Houston and because of the interest and help of its citizens.

You are all invited to spend a little time looking around the rest of our campus. Some of you may not have seen the Fondren Library, Wiess Hall, or the Abercrombie Laboratory. We hope you will visit them.

In particular, we hope you enjoy the game you have come to see. May you not be disappointed in its outcome more than half the time.

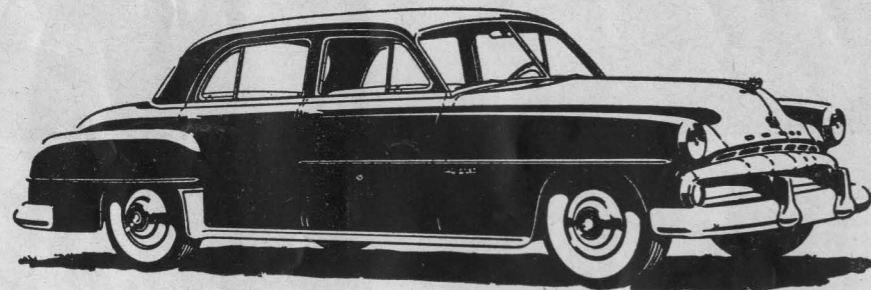
WILLIAM V. HOUSTON



38 YEARS

of automotive service to Texans

Choose a beautiful new DODGE
from a dependable dealer . . .



Jackson Motors, Ltd.

ALBERT H. BERRY

JACK W. JACKSON

Texas' Oldest Dodge and Plymouth Dealer

2404 South Main

HOUSTON



Best wishes, always
to the BLUE and GRAY!

Cameron

IRON WORKS, INC.

HOUSTON

THE RICE INSTITUTE ATHLETIC COACHING STAFF



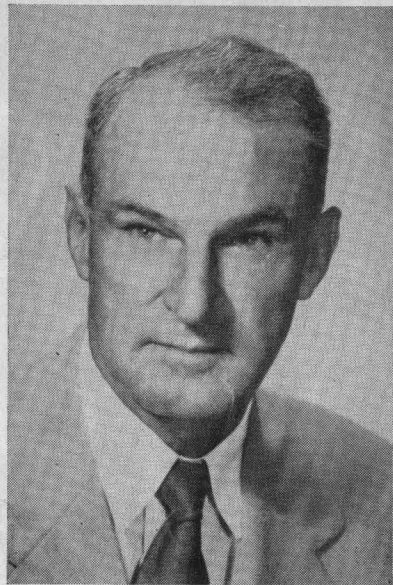
JOE DAVIS
Line Coach

CECIL GRIGG
Backfield Coach

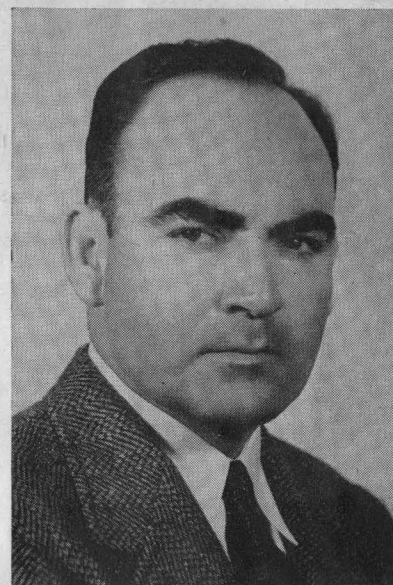
A. M. BALE
End Coach

DELL MORGAN
Asst. Coach

CHARLES MOORE
Freshman Football Coach
Freshman Basketball Coach



JESS NEELY
Head Football Coach
Athletic Director



EMMETT BRUNSON
Track Coach
Bus. Mgr. of Athletics



HAROLD STOCKBRIDGE
Asst. Coach

DON SUMAN
Basketball Coach

EDDIE WOJECKI
Head Trainer

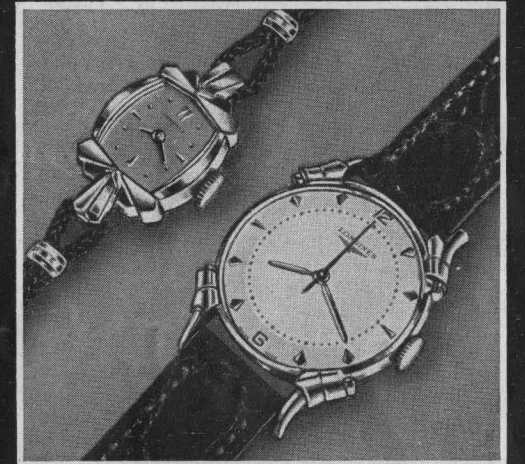
CARROLL MARTIN
Office Manager

BILL WHITMORE
Sports News Director

OFFICIAL WATCH FOR THIS GAME

Longines
The World's Most Honored Watch

ACCEPTED AS OFFICIAL WATCH
FOR TIMING
CHAMPIONSHIP SPORTS EVENTS
IN ALL FIELDS ALL OVER THE WORLD



*Product of
Longines-Wittnauer Watch Company*

As constructors of the Rice Stadium, we take great satisfaction from the contests played here—not from the final score, but from the knowledge that on this field there is rivalry without rancor, defeat without dishonor, and victory without tyranny.

In this great game look not for the shoddy, the dishonest, the shirker and the fraud, for here he cannot survive.



BROWN-BILT

Brown & Root, Inc.

Engineers — Constructors
HOUSTON

TOUCHDOWN!



Touchdown or take off with a Beech and you'll know you've got a champion on your hands. In Beech's Executive Transport and Bonanza models you'll find the World's finest airplanes designed specifically to meet the requirements of leading executives who appreciate the importance of air travel in modern industry.

To match these unexcelled planes, J. D. Reed has built a superior sales and service organization in keeping with the high standards demanded by those who accept only the best.

J. D. REED

CO., Inc.

SALES SERVICE

Beechcraft

DISTRIBUTOR

HOUSTON
Municipal Airport

TONIGHT'S GAME

BY BILL WHITMORE
Rice Sports News Director

The 1952 Rice Owls could hardly ask a sterner test for the debut of a rugged ten game schedule than tonight's grid battle with the salty Red Raiders of Texas Tech.

Fresh from a smashing 48-7 victory over West Texas State, the lads from Lubbock come into Rice Institute's swank stadium on the crest. A squad that includes a phenomenal total of 34 lettermen and several squadmen from the '51 outfit has been bolstered by some junior college transfers and freshmen, who are eligible for the varsity under Border Conference rules.

Border Conference champs last year, victors over SWC champ T.C.U. in a much-discussed upset, and conquerors of College of Pacific in the Sun Bowl, DeWitt Weaver's split T forces could be excused for being rather flushed with success.

An interesting phase of tonight's clash will be the test of the new Rice defensive unit against the high-g geared Tech offensive. Graduation and position changes have left only five members of the stalwart Owl '51 defensive starters at the same stand. Max Schuebel remains at left tackle, 6'6" Richard Chapman at left guard, Don Rhoden and Leo Rucka as linebackers, and 149-pound Horton Nesrsta at safety.

This nucleus of defenders must rally less experienced but able teammates in an effort to at least slow down such Tech scabbacks as Jim Turner, Bobby Cavazos, Sandy Welton, and Jerry Johnson. With 78 points, Turner was the second high scorer in the whole Southwest last fall, and the busy boy from Olney does several other chores besides run—such as the punting and playing defensive. Cavazos, who bulldogged steers in a couple of Central Texas

rodeos with the Owls' Rhoden during the summer, was an all-Border Conference back. Johnson runs the team as split T quarterback.

If the Owls can't completely corral this gang—and odds are against it—then the best chance for a successful evening would be to outscore them. The fans who saw that 36-27 Blue-Gray intrasquad game last week recognize that the Owls have some pretty potent offensive maneuvers themselves.

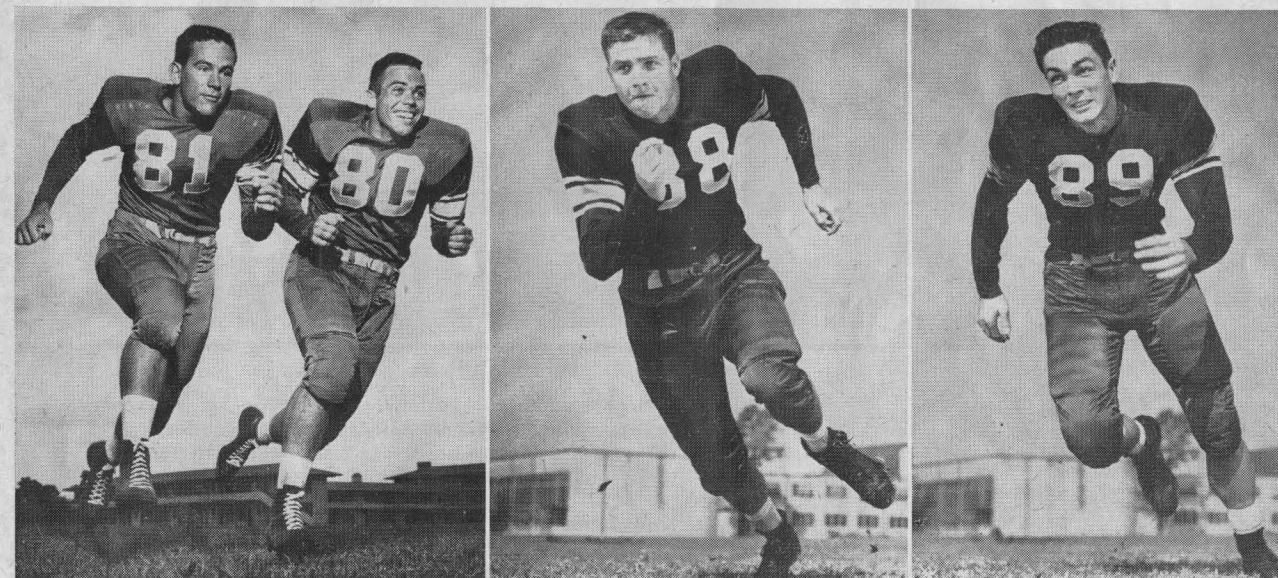
Sparking the offensive efforts for Rice will be such worthies as quarterback Dan Drake, halfbacks Carl Johnson, Billy Ed Daniels, Bill Frazier, Bill Gaskamp, and others, and fullbacks "Kosse" Johnson and Gino Biasatti.

Drake goes into a game for the first time without favorite receivers Howton and McCurry, and an interesting development of the evening's action will be to see how he fares without those veteran pass grabbers. In that host of halfbacks Rice coach Jess Neely has an unusually adept group of runners with Gaskamp's 136 yards and a nine-yard-per-carry mark in the Blue-Gray game drawing much attention. While "Kosse" Johnson apparently keeps this starting assignment at fullback and will do the punting, Biasatti shapes up as a harder runner.

Offensive linemen seldom come in for much attention since the spotlight is on the ball carriers, but the Owls figure to field a capable front line crew headed by senior right tackle and co-captain Bill Crockett, with left guard Gene Little and center Bobby Moore other two-year lettermen in that unit.

The game marks the beginning of Neely's 30th year as a coach and his 13th as head man at Rice. While he hopes the debut is a successful one, even if that should be the case there will be no chance to pause and celebrate. Scouts from Louisiana State will be in the press box charting every move by the Owls, and just a week from tonight those pesky Bengal Tigers of the Southeast Conference come into this stadium to battle Rice.

THEY BID FOR STARTING ROLES AS OWL ENDS



Fisk

Day

Ward

Bridges

Going into tonight's game, there still is quite a battle on the Rice team for starting assignments at the end positions. Among several candidates are the four men pictured above.

Bill Fisk, at the extreme left, is the only one of the quartet who lettered last season as an end. The 190-pound junior from Irving can play either offense or defense. His running mate in the left photo is his roommate, Jack Day of Galena Park. Although a senior and two-year letterman as a center, Day for the first time is playing end. The two men at the right saw brief game action last fall, but they are counted on for extensive duty this fall. Both were outstanding players in high school, Blois Bridges at Grand Prairie and Sammy Ward at Laredo.

Spring Air

"Lastic Foam"

MATTRESSES and BOX SPRINGS

America's Finest Bedding Equipment

PARKER BEDDING COMPANY

FREDERICK PARKER

HOUSTON

JOEL PARKER



11—Horton Nesrta 15—Dickie Bob Haddox 16—Bobby Warren 19—Bob Garbrecht 20—Oree "Buzzy" Bryan



Welcome to
* **FOOTBALL HEADQUARTERS**

*That means:
welcome under
the Humble sign in
your neighborhood.



You're always welcome under the Humble sign—every day in the year. But right now you'll find your neighborhood Humble dealer's station gaily decorated with Southwest Conference school colors in honor of the season, and provided with timely information about Humble's football broadcasts.

Come the weekends, your neighbor under the Humble sign invites you to be his guest at Humble's broadcasts of the games you can't attend. Enjoy this neighborly hospitality right in your own living room—tune in the Southwest Conference game, or games, of your choice.

When you drive to a game (and plan to see as much football as you can; there's no substitute for the glamor and excitement you find only at the stadium) stop for service at the Humble signs along your route . . . Welcome to Football Headquarters!

HUMBLE OIL & REFINING CO.

OFFICIAL SIGNALS ADOPTED BY NATIONAL COLLEGIATE ATHLETIC ASSOCIATION

For the best signal in **TV...**

see



BLACK-DAYLITE TELEVISION



Huge screen, beautiful compact cabinet and on-the-spot picture realism—it's G-E Model 21T4. Go into a huddle with your dealer—fast. Ask him to demonstrate the features.

When you can't get to the game,
the next best thing is G-E Model 21T4!



1. OFFSIDE



2. ILLEGAL POSITION OR PROCEDURE



3. ILLEGAL MOTION OR SHIFT



4. DELAY OF GAME



5. PERSONAL FOUL



6. ROUGHNESS AND PILING ON



7. CLIPPING



8. ROUGHING THE KICKER



9. UNSPORTSMANLIKE CONDUCT



10. DEFENSIVE HOLDING



11. ILLEGAL USE OF HANDS AND ARMS



12. INTENTIONAL GROUNDING



13. ILLEGALLY PASSING OR HANDING BALL FORWARD



14. FORWARD PASS OR KICK CATCHING INTERFERENCE



22. TIME-OUT



21. SAFETY



20. TOUCHDOWN OR FIELD GOAL



19. BALL DEAD; IF HAND IS MOVED FROM SIDE TO SIDE: TOUCHBACK



18. CRAWLING, HELPING THE RUNNER OR INTERLOCKED INTERFERENCE



17. INCOMPLETE FORWARD PASS, PENALTY DECLINED, NO PLAY OR NO SCORE



16. BALL ILLEGALLY TOUCHED, KICKED OR BATTED



15. INELIGIBLE RECEIVER DOWN FIELD ON PASS

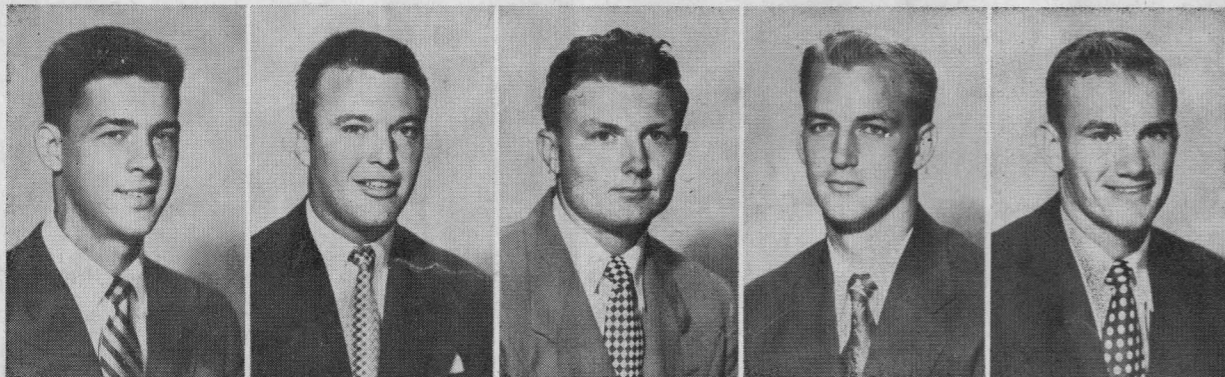


FOLLOW YOUR TEAM TO THE GAME

Fly

TRANS-TEXAS
Airways

CALL TRANS-TEXAS
OR YOUR LOCAL
TRAVEL AGENT



21—Atchley Proctor 22—Billy Ed Daniels 23—Bill Gaskamp 24—Dan Drake 25—Buddy Grantham

We are Proud . . .

Of our many young depositors who are starting now to acquire the independence of a savings account—the satisfaction of planned financing.

For over 30 years it has been our policy to extend to our customers a friendly understanding of their financial responsibilities. We invite you to drop by 712 Main to talk with us about our Free Services, Savings Plans, Loan Plans, Trust Facilities and Normal Charge Services.

Member Federal Deposit Insurance Corporation

National Bank of Commerce
OF HOUSTON
"The Bank of Courtesy"



WINNING COMBINATION . . .

Dependability and economy are the star performers on the United Gas service team. Dependability plays an important part throughout every season of the year . . . making it possible for your family to constantly enjoy the comfort and convenience offered by fine gas appliances. And because your natural gas service is so economical, it represents the wisest fuel investment you can make in your home, your business or your industry. United Gas is proud to have the opportunity of making this important gas service available to you and your neighbors.

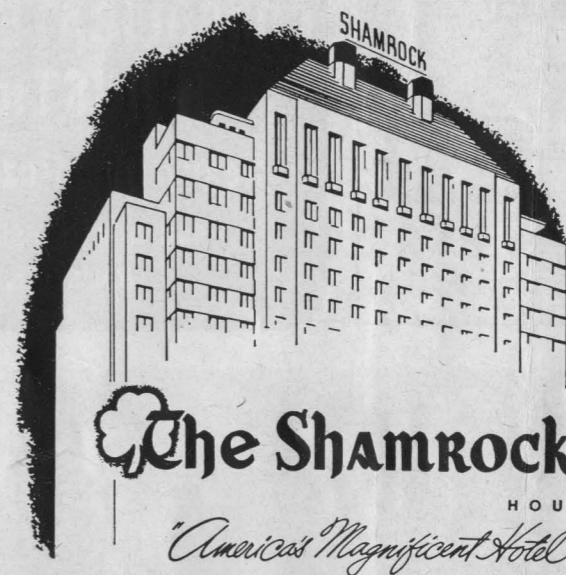
For The Best In Gas Service
Call . . . Blackstone 0271



UNITED
GAS

THE BIGGEST BARGAIN IN YOUR HOME TODAY — PHONE AT 5111
87 Years of Dependable GAS Service to Houstonians

The Rice Athletic Association Would Appreciate Your Patronizing Our Advertisers



For the
**All-American
Week-End**



Make The Shamrock your headquarters hotel — where gracious hospitality and a warm welcome await you. You'll enjoy the comfort, the faultless service, the superb cuisine, the luxurious facilities that only The Shamrock affords its guests.

Cavalcade of Stars

There's always exciting big-name entertainment in The Shamrock's famed Emerald Room . . . stars of stage, radio and motion pictures appear continually, in person, in the Cavalcade of Stars. You'll enjoy your "night out" in The Shamrock's supper clubs.

GLENN McCARTHY, President

M. JACK FERRELL, Managing Director

Foote's Cafeteria

Houston's Finest Suburban Dining Room

2 Blocks West of Stadium

Continuous Service 11:00 A.M. to 8:30 P.M.

2407 RICE BOULEVARD

7 Days a Week

CONSOLIDATED CHEMICAL INDUSTRIES INC.

Heavy Chemicals for Industry

640 MELLIE ESPERSON BLDG.

HOUSTON 2, TEXAS

NAME BRAND
Sporting Goods

OPEN DAILY 9 A.M.-6 P.M.

HOUSTON SPORTS SHOP

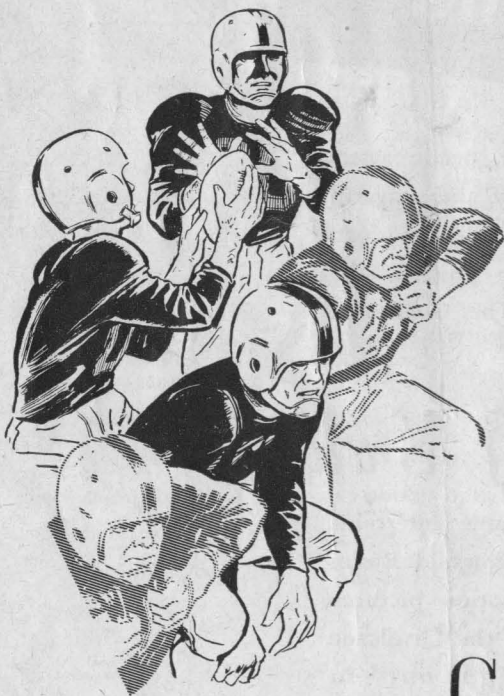
4717 Main Street, Houston • Telephone KE-8660, JU-2131



26—Leroy Fenstemaker 31—Morris Stone 35—Bill Frazier 36—Gordon Kellogg 39—Don Costa



40—Tommy Lynch 42—Don Whittaker 43—Carl Johnson 45—David Johnson 47—Dicky Moegle



*You,
Your Great Southerner
and Life Insurance*

are an unbeatable combination for
winning financial independence for
your family and yourself.

GREAT SOUTHERN
Life Insurance Company



4310 Dunlavy • Houston 6, Texas



**EVERYBODY'S
YELLING FOR**

**THE BEER WITH THAT
SMOOTH, MILD FLAVOR**

Yes Sir, — here's a beer to cheer — Southern Select! The beer with that smooth, mild flavor! It has the extra point that makes the difference — It's Pilsenized — light and bright — always tastes just right! One taste of this wonderful golden dry brew and you'll yell for the "Sparkle beer", too!

ITS PILSENIZED — HAS SPARKLE

Southern Select BEER

GALVESTON-HOUSTON BREWERIES, INC., GALVESTON, TEXAS

Enjoy
the Finest Steaks
Obtainable

YOU SELECT the steak of your choice from our gleaming Steak Bar;

YOU BRAND IT as you wish it prepared: "R" for rare, "M" for medium, etc.

WE COOK IT on our grill, or our brand new charcoal broiler, as you prefer.

ERNEST COKER'S

Ye Old College Inn

6545 SOUTH MAIN

LY-6484

Serving Hours: 5 p.m. to 11 p.m. daily
Noon til 9 p.m. Sunday

CLOSED TUESDAY

Rice Freshman Football

Two big home games here at the Rice Stadium feature the five-game schedule of the 1952 Rice Institute freshman football team. On Friday night, October 17th, the Owlets play the S.M.U. Colts and on Friday night, October 24th, they entertain the University of Texas first year team.

Several outstanding high school players of 1951 are among the squad learning the intricacies of the Rice grid system under the tutelage of head coach Charley Moore and Harold Stockbridge.

Tickets to the two big home games of the freshman team may be purchased at the ticket window at the Rice Gymnasium.

Here is the complete schedule for the Owlets for '52:

- 3 October (Friday) 2 p.m.
T.C.U Freshmen at Fort Worth
- 10 October (Friday) 8 p.m.
Del Mar Junior College at Corpus Christi
- 17 October (Friday) 8 p.m.
S.M.U. Freshmen at Rice Stadium
- 24 October (Friday) 8 p.m.
Texas Freshmen at Rice Stadium
- 6 November (Thursday) 2 p.m.
Texas A. & M. Freshmen at College Station

UNIVERSAL

PACKING & GASKET CO.

Houston Owned
and Operated



Home of Universal, where packings and gaskets are manufactured for every industrial need.



The Rice Athletic Association Would Appreciate Your Patronizing Our Advertisers

Refreshing

DRINK

Coca-Cola

REG. U. S. PAT. OFF.

RICE INSTITUTE (Offensive)

BY POSITIONS

LE Bridges 89	LT Timmons 69	LG Little 61	C Moore 56	RG Lee 62	RT Crockett 71	RE Day 80
			QB Drake 24			
			LH Frazier 35	RH C. Johnson 43		
			FB D. Johnson 45			

TEXAS TECH (Defensive)

BY POSITIONS

LE Kummer 83	LT Elmore 79	LG Lambert 77	LLB Williams 51	RG Howard 69	RT Brown 75	RE Wright 81
			RLS Hayes 57			
			LH Turner 21	RH Welton 30		
			SAFETY Thompson 52			

See line-ups on page 20 for Texas Tech offense and Rice defense



COPYRIGHT 1952, COCA-COLA COMPANY

HOUSTON COCA-COLA BOTTLING COMPANY ★ 2800 BISSONNET

FOR YOU

FIRST PREMIUM QUALITY CIGARETTE REGULAR AND KING-SIZE!

TEXAS TECH SQUAD

No.	Name	Pos.	Age	Ht.	Wt.
10	Carl Madison, 55	B	21	5-9	170
12	John Moughon, 53	B	21	6-0	180
14	James Odom, 55	B	17	6-0	170
16	Jerry Johnson, 55	B	18	5-10	170
17	Pete Edwards, 53	B	21	6-2	180
18	James Orn, 55	B	19	6-1	190
19	Don Lewis, 54	B	21	5-8	155
20	Don Harris, 56	B	19	6-0	185
21	Jim Turner, 53	B	20	5-11	175
23	John Metlock, 55	B	20	5-10	185
24	Bobby Cavazos, 54	B	21	5-11	177
25	Norman Janes, 54	B	21	6-0	169
27	Elmer Wilson, 55	B	18	5-4	155
28	Don Douglass, 54	B	20	5-10	180
29	Pat Green, 56	B	18	6-2	185
30	Charles Welton, 53	B	21	6-1	198
31	Rick Spinks, 55	B	19	5-11	195
32	James Sides, 56	B	18	5-11	190
33	Pete Rinaldi, 55	B	22	5-10	190
40	Jack Kirkpatrick, 56	B	17	6-2	180
41	Joe Moore, 56	B	18	5-10	175
42	Everett Jones, 56	B	18	5-11	180
50	Don Funk, 55	C	19	6-0	186
51	Jimmy Williams, 54	B	22	6-4	215
52	John Thompson, 54	B	20	5-11	155
53	Gary Boyer, 54	B	19	6-0	180
54	Ralph Martin, 55	B	19	6-2	197
55	R. B. Hodge, 54	C	22	6-3	230
56	Barton Massey, 55	C	22	6-4	215
57	Hilton Hayes, 54	B	20	6-0	180
60	George Thacker, 56	G	19	6-0	190
61	L. W. Fitzhugh, 55	G	22	5-10	195
62	Harold Spraggins, 54	E	20	6-0	190
63	Gale Morris, 55	G	20	6-1	205
64	Vernon Barron, 53	G	21	5-10	195
65	Don Gray, 54	G	25	6-0	195
66	Bobby Hunt, 55	G	20	6-0	195
67	Bill Whitted, 55	G	18	6-0	195
68	Hartsel Haws, 56	G	18	5-9	190
69	Ray Howard, 55	G	18	5-11	200
70	Paul Barrington, 55	T	19	6-0	205
71	Arlen Wesley, 55	T	19	6-1	200
72	Marland Ribble, 53	T	19	6-1	205
73	Minor Nelson, 56	T	18	6-2	210
74	Hollice Davis, 53	T	21	6-0	200
75	David Brown, 54	T	21	6-3	220
76	Jerry Walker, 56	T	18	6-3	215
77	Bobby Lambert, 54	T	20	6-1	225
78	Bill Waters, 56	T	18	6-6	220
79	Kenneth Elmore, 55	T	19	6-5	235
80	R. D. Bradshaw, 56	E	18	6-4	200
81	Billy Wright, 54	E	20	6-0	188
82	Dean White, 55	E	19	6-3	185
83	Ken Kummer, 55	E	20	5-11	188
84	Alton Linne, 53	E	21	6-1	198
85	Victor Spooner, 54	E	22	6-0	190
86	Lewis Crossley, 53	E	21	5-11	170
87	Bill Tillman, 54	E	25	6-1	180
88	Paul Erwin, 54	E	21	5-11	181
89	Bill Bryan, 55	E	18	6-2	195



RICE INSTITUTE SQUAD

No.	Name	Pos.	Age	Ht.	Wt.
11	Horton Nestrsta, 54	B	21	5-9	149
15	Dickie Bob Haddox, 53	B	20	5-9	162
16	Bobby Warren, 55	B	20	5-7	165
19	Bob Garbrecht, 54	B	20	6-1	200
20	Oree "Buzzy" Bryan, 55	B	20	6-1	185
21	Atchley Proctor, 55	B	18	6-0	170
22	Billy Ed Daniels, 53	B	21	6-0	168
23	Bill Gaskamp, 54	B	20	5-10	167
24	Dan Drake, 54	B	21	6-2	190
25	Buddy Grantham, 54	B	19	6-2	175
26	Leroy Fenstermaker, 54	B	20	6-2	195
31	Morris Stone, 55	B	19	5-9	167
35	Bill Frazier, 53	B	21	5-10	165
36	Gordon Kellogg, 55	B	19	5-10	171
39	Don Costa, 55	B	19	6-0	194
40	Tommy Lynch, 55	B	20	6-0	182
42	Don Whittaker, 54	B	19	6-1	192
43	Carl Johnson, 54	B	19	5-11	179
45	David Johnson, 54	B	20	6-0	176
47	Dicky Moegle, 55	B	18	6-0	167
49	Gino Biasatti, 55	B	20	5-10	185
50	Ronald Lassiter, 55	C	20	6-2	202
54	Don Rhoden (c-c), 53	C	19	5-11	200
55	Leo Rucka, 54	C	21	6-2	204
56	Bobby Moore, 53	C	22	6-2	205
59	Jimmy Jax, 55	C	19	6-2	200
60	Kenny Paul, 55	G	19	5-11	195
61	Gene Little, 53	G	23	6-0	205
62	LaMar "Skip" Lee, 54	G	20	6-0	197
63	Jerry Fitzpatrick, 55	C	20	6-1	202
64	Walter Schleyer, 54	G	20	5-11	190
65	Dan Hart, 54	G	20	5-10	195
66	Dan "Hans" Wagner, 55	G	21	6-1	205
67	W. C. Treadway, 54	G	20	6-1	200
68	Larry Lundstedt, 55	G	18	5-11	188
69	James Timmons, 53	G	22	6-1	198
70	John Hudson, 54	T	19	6-0	212
71	Bill Crockett (c-c), 53	T	20	6-2	206
72	Max Schuebel, 54	T	20	6-1	210
73	LaVon Cox, 55	T	19	6-0	230
74	Robert Cashion, 55	T	20	6-1	217
75	Layton Golemon, 55	T	18	6-4	210
76	James Ellis, 55	T	19	6-0	200
77	Dan Winship, 55	G	19	6-0	215
78	Richard Chapman, 54	T	19	6-6	218
79	Buddy Edwards, 54	T	21	6-2	230
80	Jack Day, 53	E	22	6-0	195
81	Bill Fisk, 54	E	21	6-0	190
82	R. E. Worthham, 55	E	19	5-11	185
83	R. J. Schroeder, 54	E	20	6-4	186
84	James Heflin, 53	E	21	6-2	188
85	"Chuck" Stephenson, 53	E	18	6-1	180
86	LaDon Cox, 53	E	19	6-0	182
87	Murff Bledsoe, 53	E	19	6-0	176
88	Sammy Ward, 54	E	20	6-0	193
89	Blois Bridges, 54	E	20	6-1	180
90	Lamoine Holland, 55	E	19	6-2	185
91	Tommy Wilson, 54	E	19	6-2	187

...Much Milder

CHESTERFIELD

LARGEST SELLING CIGARETTE IN AMERICA'S COLLEGES

DRINK
Coca-Cola
REG. U.S. PAT. OFF.

Delicious

TEXAS TECH (Offensive)

BY POSITIONS

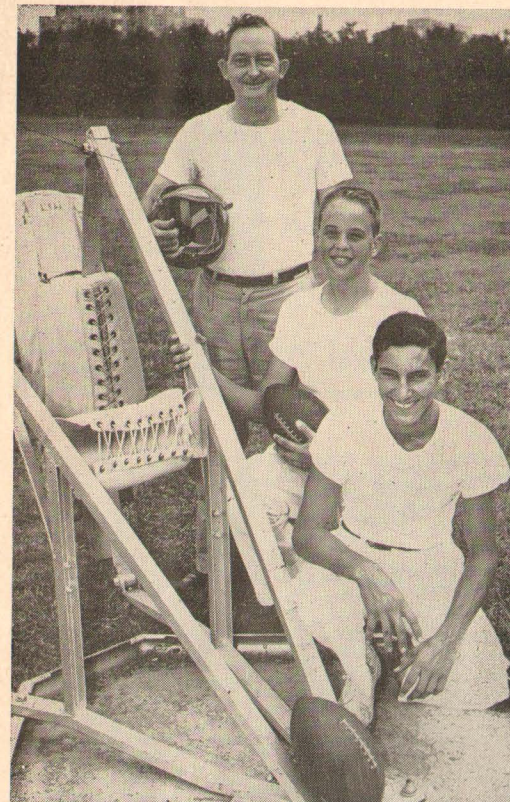
LE Erwin 88	LT Ribble 72	LG Gray 65	C Funk 50	RG Barron 64	RT Davis 74	RE Crossley 86
			QB Johnson 16			
	LH Turner 21			RH Cavazos 24		
			FB Welton 30			

RICE INSTITUTE (Defensive)

BY POSITIONS

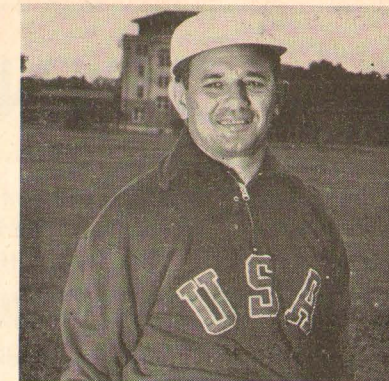
LE Fisk 81	LT Schuebel 72	LG Chapman 78	RG Ellis 76	RT Hudson 70	RE Day 80
	LLB Rhoden 54			RLB Rucka 55	
LH Kellogg 36				RH Whittaker 42	
		S Nesrsta 11			

See line-ups on page 17 for Texas Tech defense and Rice offense



J. B. Sorsby, Howard Schaumburg, Louis Loeser

The man who looks after the storing, issuing, and repairing of the Owls' athletic equipment is J. B. Sorsby, an employee of the Institute for over 20 years. The student manager of the football team is Norman Moore, who looks after the equipment on the field, assists in detail work in the dressing room, and handles a number of duties.



Trainer Eddie Wojeki

MEDICAL, TRAINING FACILITIES FOR RICE ATHLETICS

The finest in medical and training care and the most modern equipment available is provided athletes in all sports at Rice Institute. This important phase of an athletic program often is overlooked by spectators, whose chief interest is in the action on the playing field. However, there are a number of persons whose services "behind the scenes" mean a great deal toward having a successful all-round athletic program.

Dr. Hugh Welch has served as team physician for many years, and with consulting physicians Dr. Jack Brannon and Dr. E. T. Smith the Rice players have the services of an excellent medical staff.

One of the busiest men on the Rice athletic scene is head athletic trainer Eddie Wojeki. His modern training quarters are where the athletes receive top care for injuries, and where the players get advice on diet and myriad subjects.

As a tribute to his ability, Wojeki received a signal honor for Rice Institute and himself last summer when he was named head trainer for the American Olympic team that competed in Helsinki, Finland.

Ably assisting in the training room are student trainers Louis Loeser, a sophomore, and Howard Schaumburg, former Owl "mascot" and now in high school.

COMPLIMENTS

OF

HERRIN TRANSPORTATION COMPANY

2300 WALKER

FA-5111

FACTS ABOUT RICE INSTITUTE

The Rice Institute is privately endowed and non-sectarian. The Institute is named for its founder, the late William Marsh Rice of Houston. Rice Institute has a limited enrollment with a student body of about 1,500. In effect, all Rice students are on scholarships as no tuition is charged those accepted. The school's picturesque campus covers 300 acres in Houston's southwest section. A major building program has seen several million dollars in new construction on the campus. New structures include the Fondren Library, Abercrombie Engineering Laboratory, M. D. Anderson class room building, Wiess Hall, dormitory for men, and the Rice Stadium and Rice Gymnasium. The Fondren Library, one of the finest and most modern in the nation, contains about 250,000 volumes.

QUINBY EMPLOYMENT SERVICE

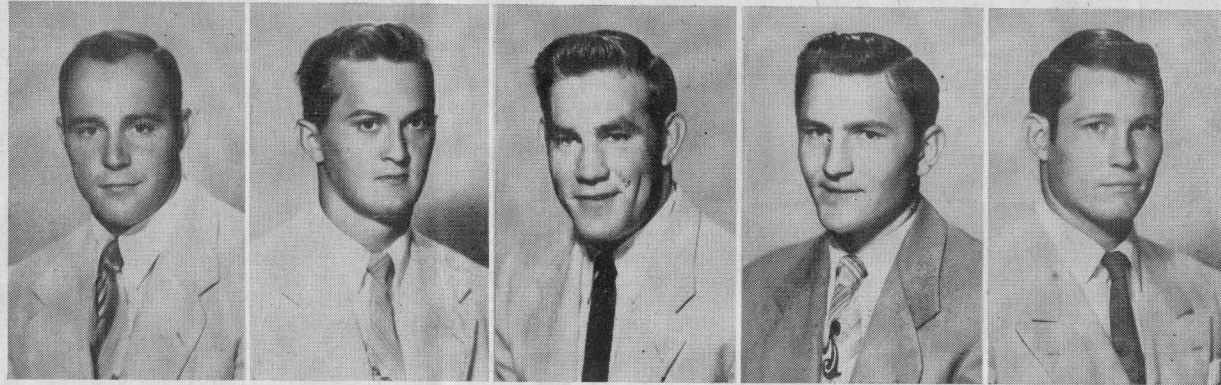
"A Name Worth Remembering"

You can benefit from our many years experience in the personnel field Executive, Office, Sales, and Technical Personnel

Member National Employment Board, Chamber of Commerce and National Association Personnel Consultants

409 Bankers Mortgage Building

Houston 2, Texas



49—Gino Biasatti

50—Ronald Lassiter

54—Don Rhoden (c-c)

55—Leo Rucka

56—Bobby Moore



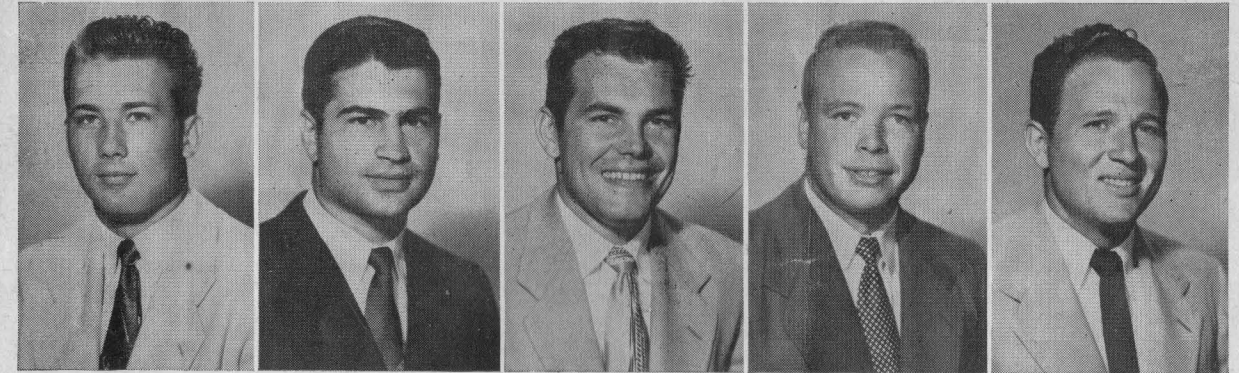
2020 Main Street

"THE BANK OF CORDIALITY"

Member Federal Deposit Insurance Corporation

BEST WISHES
TO THE OWLS

W. S. Bellows Construction Corp.



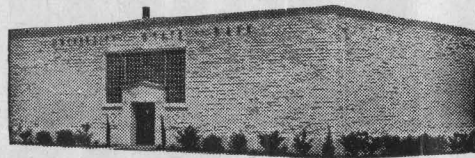
59—Jimmy Jax

60—Kenny Paul

61—Gene Little

62—LaMar "Skip" Lee

63—Jerry Fitzpatrick



COMPLETE
METROPOLITAN
SERVICE

WITH
RESIDENTIAL
CONVENIENCE



Serving Southwest Houston

West University Place, Southside Place and Bellaire

AUTOMOBILE TELLER SERVICE

UNIVERSITY STATE BANK

KEystone 5574

6135 KIRBY DRIVE at AMHERST

FIRST STATE BANK

BELLAIRE, TEXAS

MOhawk 3413

5123 BELLAIRE BOULEVARD

MEMBER FEDERAL DEPOSIT INSURANCE CORPORATION

MAKE YOUR GOAL

BEFORE THE KICKOFF

AT

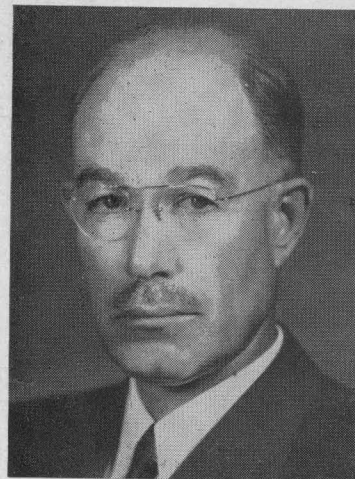
Cousin's 4401 FANNIN

OR

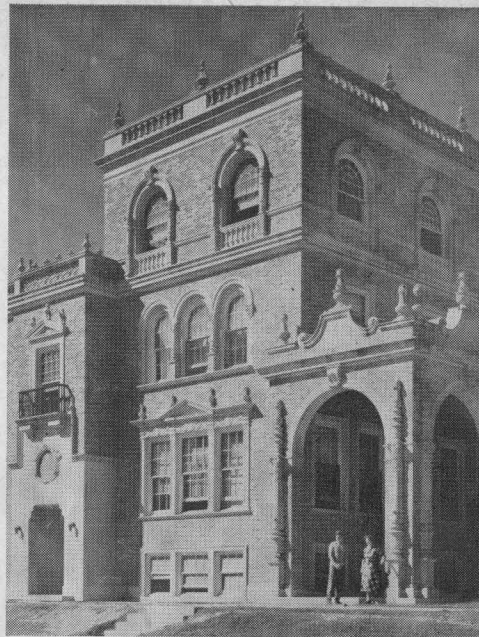
AFTER THE FINAL GUN

The Rice Athletic Association Would Appreciate Your Patronizing Our Advertisers

TEXAS



DR. E. N. JONES
President, Texas Tech



Science Hall, on Tech Campus

TECH



DeWITT WEAVER
Athletic Director, Head Coach

Texas Tech is a co-educational, state-supported college of approximately 5,400 enrollment that opened its doors in 1925. Course offerings at the Lubbock school are in the Divisions of Arts and Sciences, Business Administration, Engineering, Home Economics, Graduate, and Air and Military Science and Tactics.

Dr. E. N. Jones, formerly Dean at Baylor University and President at Texas A&I College, was promoted from vice-presidency of Texas Tech to succeed Dr. D. M. Wiggins, who resigned Sept. 1. Charles C. Thompson of Colorado City is Chairman of the Board of Directors. A Houstonian, Leon Ince, is a member of the Board.

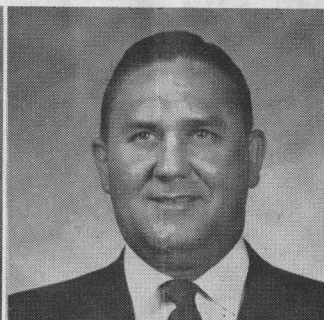
Texas Tech's athletic program includes intercollegiate competition in football, basketball, track and field, fencing, golf, tennis, and swimming. The Red Raiders are defending football champions of the Border Conference.

DeWitt T. Weaver is entering his second year as head coach of Texas Tech's Red Raiders. He graduated from the University of Tennessee, as did an assistant, Buist (Buzz) Warren. Schools of the other coaches are Oklahoma for Bobby Goad, Jack Mitchell, and Wade Walker, Georgia for Wyatt Posey, Oklahoma City for George Scott, and Texas Tech for Polk Robison.

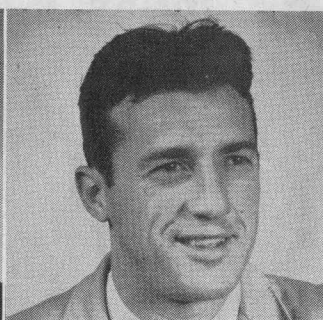
MEMBERS OF ATHLETIC STAFF



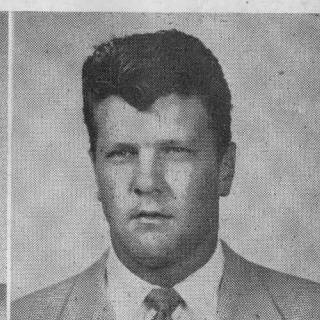
JIMMIE WILSON
Bus. Mgr. of Athletics



WYATT POSEY
Assistant Coach



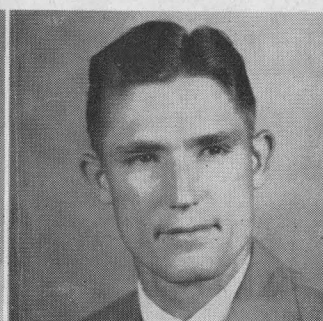
JACK MITCHELL
Assistant Coach



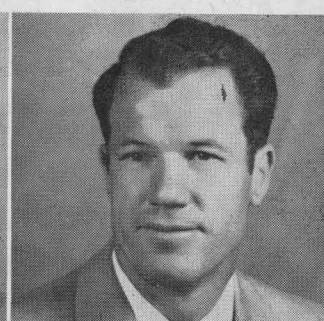
WADE WALKER
Assistant Coach



POLK ROBISON
Chief Football Scout

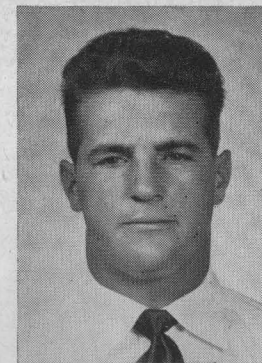


BOBBY GOAD
Assistant Coach

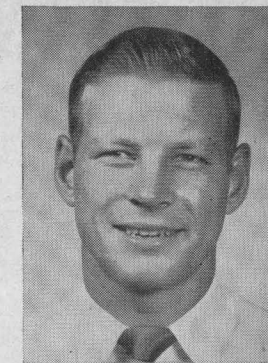


"BUZZ" WARREN
Assistant Coach

RED

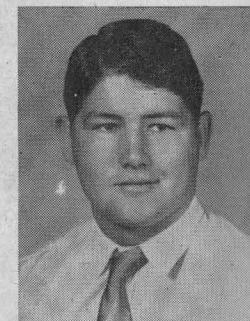


64—Vernon Barron

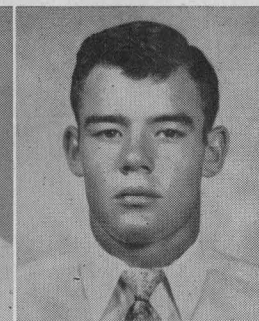


21—Jim Turner

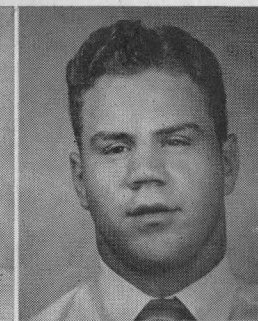
RAIDERS



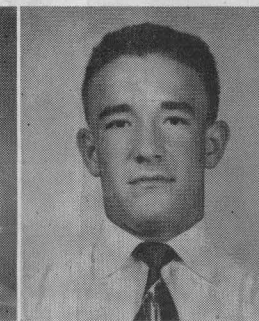
77—Bobby Lambert



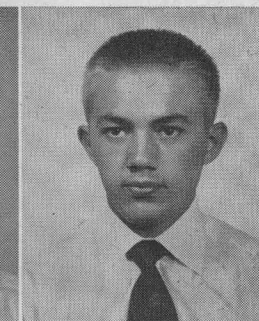
16—Jerry Johnson



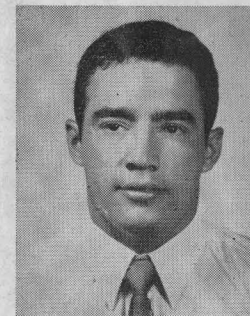
74—Hollice Davis



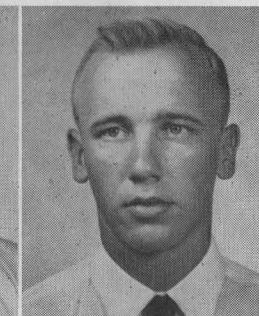
52—John Thompson



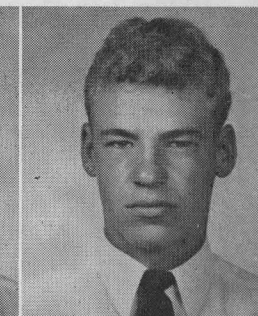
27—Elmer Wilson



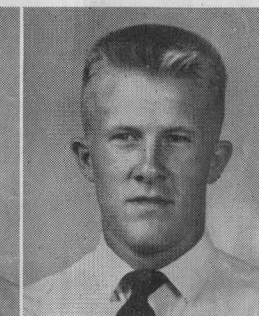
24—Bobby Cavazos



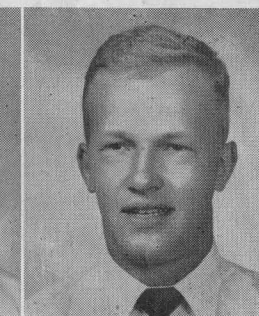
18—James Orn



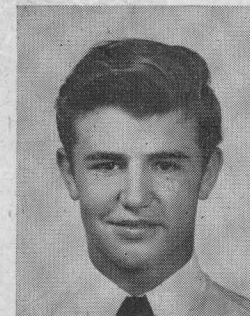
88—Paul Erwin



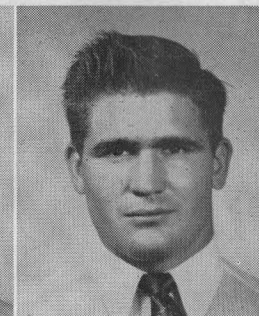
82—Dean White



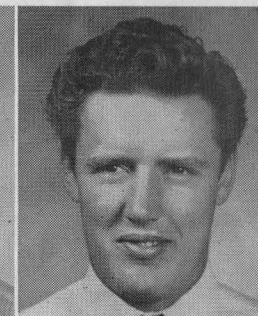
72—Marland Ribble



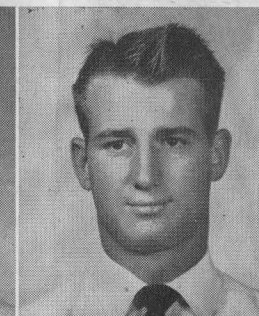
19—Don Lewis



31—Rick Spinks



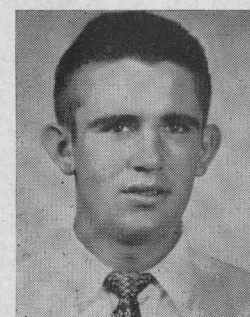
55—R. B. Hodge



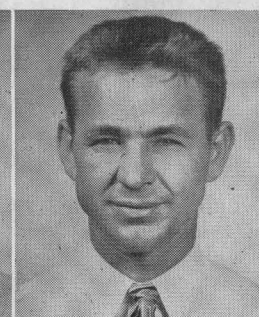
28—Don Douglass



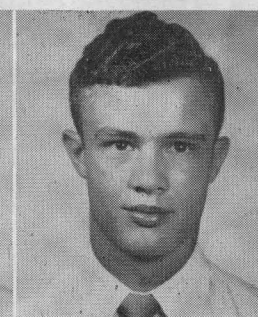
50—Don Funk



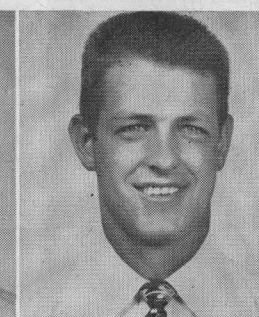
71—Arlen Wesley



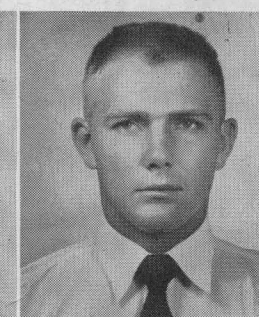
61—L. W. Fitzhugh



14—James Odom

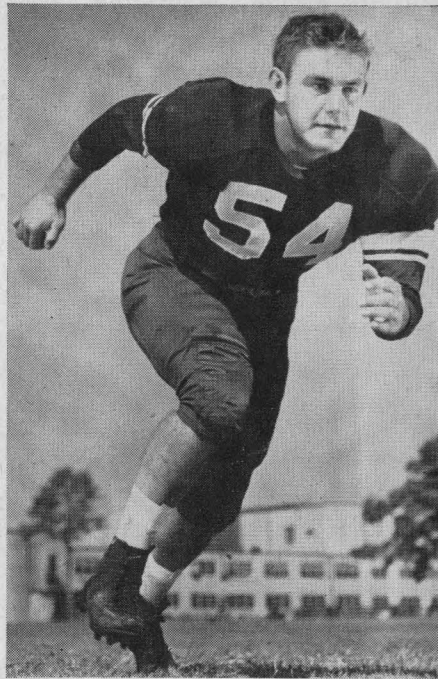


86—Lewis Crossley



69—Ray Howard

1952 CO-CAPTAINS OF RICE INSTITUTE OWLS



DON RHODEN



BILL CROCKETT

RICE OWLS VARSITY BASKETBALL SCHEDULE

All home games of coach Don Suman's Owls are played on Autry Court in the new Rice Gymnasium, completed in 1951, which seats 6,000 fans for basketball games.

11 Dec.	(Thur.)	Sam Houston State	at Huntsville
13 Dec.	(Sat.)	Kansas University	at Houston
18 Dec.	(Thur.)	Tulane University	at Houston
20 Dec.	(Sat.)	Colorado A.&M.	at Houston
23 Dec.	(Tues.)	Stephen F. Austin	at Nacogdoches
26-30 December—Owls play three games in S.W.C. tournament at Dallas			
6 Jan.	(Tues.)	*Southern Methodist	at Houston
13 Jan.	(Tues.)	*Baylor University	at Waco
17 Jan.	(Sat.)	*Arkansas University	at Fayetteville
20 Jan.	(Tues.)	*Texas Christian	at Houston
24 Jan.	(Sat.)	*Texas A.&M.	at Houston
5 Feb.	(Thur.)	Sam Houston State	at Houston
7 Feb.	(Sat.)	*University of Texas	at Austin
9 Feb.	(Mon.)	*Arkansas University	at Houston
14 Feb.	(Sat.)	*Texas A.&M.	at College Station
17 Feb.	(Tues.)	*Baylor University	at Houston
21 Feb.	(Sat.)	*Texas Christian	at Fort Worth
24 Feb.	(Tues.)	*University of Texas	at Houston
3 Mar.	(Tues.)	*Southern Methodist	at Dallas

* Southwest Conference Game.

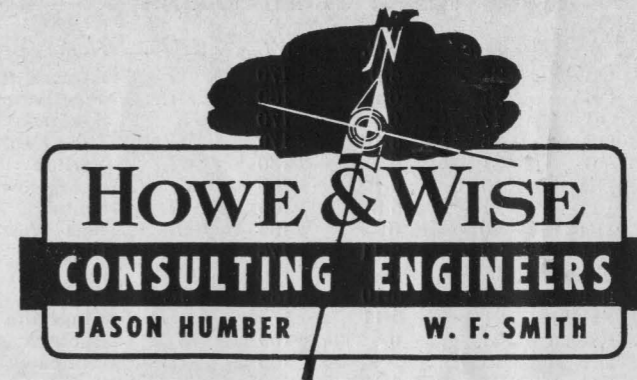
Freshman Basketball Schedule

The 1952-53 Rice freshman basketball team will play six of its 12 games at home as preliminary contests to varsity games at Autry Court in the Rice Gymnasium. Charles Moore is freshman cage coach. Here is the schedule:

11 Dec.	—Wharton Jr. College	at Wharton
13 Dec.	—Victoria Jr. College	at Houston
18 Dec.	—Allen Academy	at Houston
20 Dec.	—Wharton Jr. College	at Houston
13 Jan.	—Baylor Freshmen	at Waco
17 Jan.	—Allen Academy	at Bryan
24 Jan.	—Texas A. & M. Freshmen	at Houston
7 Feb.	—Texas Freshmen	at Austin
14 Feb.	—Texas A. & M. Freshmen	at College Station
17 Feb.	—Baylor Freshmen	at Houston
20 Feb.	—Victoria Jr. College	at Victoria
24 Feb.	—Texas Freshmen	at Houston

Jason Humber
Class of '22

W. F. Smith
Class of '26



64—Walter Schleyer

65—Dan Hart

66—Dan "Hans" Wagner

67—W. C. Treadway

68—Larry Lundstedt

Complete Insurance Coverage

American General Group

American General Investment Corporation

American General Life Insurance Company

American General Insurance Company

RUSK BUILDING

HOUSTON, TEXAS

The Rice Athletic Association Would Appreciate Your Patronizing Our Advertisers

1952 TEXAS TECH ROSTER

No.	Name	Class	Pos.	Age	Ht.	Wt.	Exp.	Home
10	Carl Madison	55	QB	21	5-9	170	Fr	Atmore, Ala.
12	John Moughon	53	QB	21	6	180	1L	Weatherford
14	James Odom	55	QB	17	6	170	S	Alvarado
16	Jerry Johnson	55	QB	18	5-10	170	1L	Hale Center
17	Pete Edwards	53	QB	21	6-2	180	2L	Vernon
18	James Orn	55	DH	19	6-1	190	S	Georgetown
19	Don Lewis	54	LH	21	5-8	155	1L	Quitaque
20	Don Harris	56	DH	19	6	185	0	Fort Worth (Laneri)
21	Jim Turner	53	LH	20	5-11	175	2L	Olney
22	Jack Kirkpatrick	56	LH	17	6-2	180	0	Post
23	John Metlock	55	RH	20	5-10	185	JC	Dalhart
24	Bobby Cavazos	54	RH	21	5-11	177	1L	Kingsville
25	Norman James	54	RH	21	6	169	S	Lubbock (Subiaco Academy)
27	Elmer Wilson	55	LH	18	5-4	155	1L	Pampa
28	Don Douglass	54	RH	20	5-10	180	S	Corpus Christi
29	Pat Green	56	RH	18	6-2	185	0	Paducah
30	Charles Welton	53	FB	21	6-1	198	2L	Fairmont, West Va.
31	Rick Spinks	55	FB	19	5-11	195	1L	Kermit
32	James Sides	56	FB	18	5-11	190	0	Lubbock
33	Pete Rinaldi	55	FB	22	5-10	190	1L	Orange, N. J.
40	Joe Moore	56	DH	18	5-10	175	0	Abilene
42	Everett Jones	56	DH	18	5-11	180	0	Childress
50	Don Funk	55	C	19	6	186	1L	Chickasha, Okla.
51	Jimmy Williams	54	LB	22	6-4	215	1L	Phillips
52	John Thompson	54	DH	20	5-11	155	1L	Brownfield
53	Gary Boyer	54	LB	19	6	180	S	Borger
54	Ralph Martin	55	LB	19	6-2	197	1L	Fort Worth (Paschal)
55	R. B. Hodge	54	C	22	6-3	230	Tr	Blytheville, Ark.

1952 RICE INSTITUTE OWLS VARSITY FOOTBALL ROSTER

No.	Name	Pos.	Wt.	Ht.	Age	Class	Exp.	Home Town
11	Horton Nestrta	LH	149	5' 9"	21	Junior	1 VL	San Antonio
15	Dickie Bob Haddox	RH	162	5' 9"	20	Senior	2 VL	Navasota
16	Bobby Warren	LH	165	5' 7"	20	Soph.	Sqd.	Austin
19	Bob Garbrecht	FB	200	6' 1"	20	Junior	Sqd.	New York City, N.Y.
20	Oree "Buzzy" Bryan	QB	185	6' 1"	20	Soph.	Sqd.	Houston (San Jacinto)
21	Atchley Proctor	QB	170	6' 0"	18	Soph.	FL	DeKalb
22	Billy Ed Daniels	LH	168	6' 0"	21	Senior	1 VL	Kerrville
23	Bill Gaskamp	RH	167	5' 10"	20	Junior	J.C.	Brenham
24	Dan Drake	QB	190	6' 2"	21	Junior	1 VL	Fort Worth
25	Buddy Grantham	QB	175	6' 2"	19	Junior	Sqd.	Grand Prairie
26	Leroy Fenstermaker	QB	195	6' 2"	20	Junior	Sqd.	Llano
31	Morris Stone	RH	167	5' 9"	19	Soph.	FL	Kerrville
35	Bill Frazier	LH	165	5' 10"	21	Senior	1 VL	Pasadena
36	Gordon Kellogg	LH	171	5' 10"	19	Soph.	FL	Baytown
39	Don Costa	LH	194	6' 0"	19	Soph.	FL	Houston (St. Thomas)
40	Tommy Lynch	FB	182	6' 0"	20	Soph.	FL	Houston (San Jacinto)
42	Don Whittaker	FB	192	6' 1"	19	Junior	Sqd.	Dallas
43	Carl Johnson	RH	179	5' 11"	19	Junior	Sqd.	Houston (San Jacinto)
45	David "Kosse" Johnson	FB	176	6' 0"	20	Junior	1 VL	Baytown
47	Dicky Moegle	LH	167	6' 0"	18	Soph.	FL	Taylor
49	Gino Biasatti	FB	185	5' 10"	20	Soph.	Sqd.	Dallas
50	Ronald Lassiter	C	202	6' 2"	20	Soph.	FL	Houston (San Jacinto)
54	Don Rhoden (c-c)	C	200	5' 11"	19	Senior	2 VL	Kerrville
55	Leo Rucka	C	204	6' 2"	21	Junior	1 VL	Crosby
56	Bobby Moore	C	205	6' 2"	22	Senior	2 VL	Amarillo
59	Jimmy Jax	C	200	6' 2"	19	Soph.	FL	Houston (Lamar)
60	Kenny Paul	RG	195	5' 11"	19	Soph.	FL	Houston (Lamar)
61	Gene Little	LG	205	6' 0"	23	Senior	2 VL	Corpus Christi

Always A Winning Combination!



DRILLING STABILIZERS



KINNEAR COMBINATION BITS



BURRIS KEY SEAT WIPERS

AUTO FLEX-ECCENTRIC GUIDE CASING MILL



A-1 BIT & TOOL COMPANY

CHECK



VALVES



WATER CONTROL VALVE



JET BITS



WIRE LINE CORE BARREL

SIDE CORE



WALL BARRELS



SURE SHOT DEVIATION RECORDING INSTRUMENT

MILLING



TOOLS

9000 ALMEDA ROAD

HOUSTON TEXAS

56	Barton Massey	55	C	22	6-4	215	1L	Bowie
57	Hilton Hayes	54	LB	20	6	180	JC	San Angelo
60	George Thacker	56	RG	19	6	190	0	San Antonio (Jefferson)
61	L. W. Fitzhugh	55	LG	22	5-10	195	Tr	Blytheville, Ark.
62	Harold Spraggins	54	DLE	20	6	190	JC	West Point, Ga.
63	Gale Morris	55	LG	20	6-1	205	0	Monument, N. M. (Hobbs HS)
64	Vernon Barron	53	RG	21	5-10	195	2L	Temple
65	Don Gray	54	LG	25	6	195	1L	Breckenridge
66	Bobby Hunt	55	RG	20	6	195	1L	Altus, Okla.
67	Bill Whitted	55	LG	18	6	195	1L	Hot Springs, Ark.
68	Hartsel Haws	56	RG	18	5-9	190	0	Altus, Okla.
69	Ray Howard	55	RG	18	5-11	200	1L	Childress
70	Paul Barrington	55	LT	19	6	205	1L	Chippewa Falls, Wis. (Subiaco Acdy)
71	Arlen Wesley	55	RT	19	6-1	200	1L	Littlefield
72	Marland Ribble	53	LT	19	6-1	205	2L	Fort Worth (Arlington Heights)
73	Minor Nelson	56	RT	18	6-2	210	0	Winters
74	Hollice Davis	53	RT	21	6	200	1L	Fort Worth (Diamond Hill)
75	David Brown	54	RT	21	6-3	220	1L	Weatherford
76	Jerry Walker	56	RT	18	6-3	215	0	Pampa
77	Bobby Lambert	54	LT	20	6-1	225	JC	Nixon
78	Bill Waters	56	RT	18	6-6	220	0	Lubbock
79	Kenneth Elmore	55	LT	19	6-5	235	1L	Carlsbad, N. M.
80	R. D. Bradshaw	56	LE	18	6-4	200	0	Childress
81	Billy Wright	54	DRE	20	6	188	1L	Lubbock
82	Dean White	55	LE	19	6-3	185	1L	Lubbock
83	Ken Kummer	55	DLE	20	5-11	188	1L	Detroit, Mich. (Central Catholic)
84	Alton Linne	53	DLE	21	6-1	198	1L	Monahans
85	Victor Spooner	54	RE	22	6	190	JC	Colquitt, Ga.
86	Lewis Crossley	53	RE	21	5-11	170	2L	Eastland
87	Bill Tillman	54	LE	25	6-1	180	1L	Surrency, Ga.
88	Paul Erwin	54	LE	21	5-11	181	1L	Odessa
89	Bill Bryan	55	RE	18	6-2	195	1L	Pecos

62	LaMar "Skip" Lee	RG	197	6' 0"	20	Junior	Sqd.	Huntsville
63	Jerry Fitzpatrick	C	202	6' 1"	20	Soph.	FL	Harlingen
64	Walter Schleyer	RG	190	5' 11"	20	Junior	Sqd.	San Angelo
65	Dan Hart	RG	195	5' 10"	20	Junior	1 VL	Houston (Milby)
66	Dan "Hans" Wagner	RG	205	6' 1"	21	Senior	1 VL	Schulenberg
67	W. C. Treadway	LG	200	6' 1"	20	Junior	1 VL	Houston (San Jacinto)
68	Larry Lundstedt	LG	188	5' 11"	18	Soph.	FL	Austin
69	James Timmons	LG	198	6' 1"	22	Senior	1 VL	Sweetwater
70	John Hudson	LT	212	6' 0"	19	Junior	1 VL	Center
71	Bill Crockett (c-c)	RT	206	6' 2"	20	Senior	2 VL	Bonham
72	Max Schuebel	LT	210	6' 1"	20	Junior	1 VL	Houston (Reagan)
73	LaVon Cox	RT	230	6' 0"	19	Soph.	FL	Galena Park
74	Robert Cashion	RT	217	6' 1"	20	Soph.	FL	Mexia
75	Layton Golemon	LT	210	6' 4"	18	Soph.	FL	Kerrville
76	James Ellis	LT	200	6' 0"	19	Soph.	FL	West Columbia
77	Dan Winship	LG	215	6' 0"	19	Soph.	Sqd.	Houston (Reagan)
78	Richard Chapman	LT	218	6' 6"	19	Junior	1 VL	Waxahachie
79	Buddy Edwards	RT	230	6' 2"	21	Junior	Sqd.	Texarkana, Ark.
80	Jack Day	RE	195	6' 0"	22	Senior	2 VL	Galena Park
81	Bill Fisk	LE	190	6' 0"	21	Junior	1 VL	Irving
82	R. E. Wortham	RE	185	5' 11"	19	Soph.	FL	Klein
83	R. J. Schroeder	J.F.	186	6' 4"	20	Junior	1 VL	East Bernard
84	James Heflin	LE	188	6' 2"	21	Soph.	Sqd.	Mart
85	"Chuck" Stephenson	LE	180	6' 1"	18	Soph.	FL	Bloomington
86	LaDon Cox	RE	182	6' 0"	19	Soph.	FL	Galena Park
87	Murff Bledsoe	RE	176	6' 0"	19	Soph.	FL	Pearsall
88	Sammy Ward	LE	193	6' 0"	20	Junior	Sqd.	Laredo
89	Blois Bridges	LE	180	6' 1"	20	Junior	Sqd.	Grand Prairie
90	Lamoine Holland	RE	185	6' 2"	19	Soph.	FL	San Antonio
91	Tommy Wilson	RE	187	6' 2"	19	Junior	J.C.	Graham

AT LUNCH OR DINNER

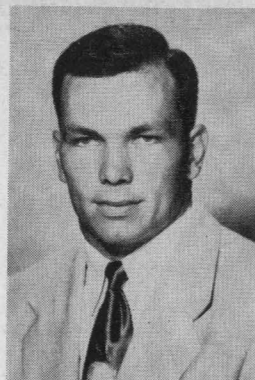
You can always enjoy a delicious meal in the Warwick's Famous Crystal Dining Room

A PLEASURE TO SERVE YOU

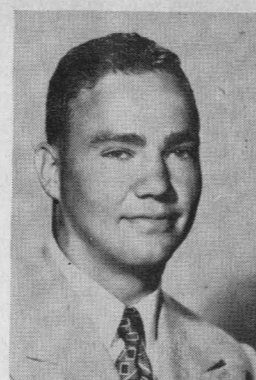


R. T. CULLATHER, Manager

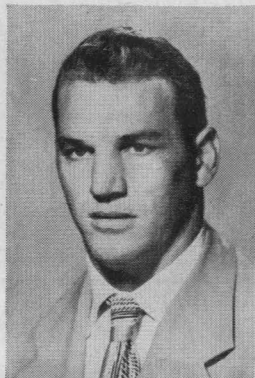
WARWICK HOTEL
AND APARTMENTS
Houston 1, Texas



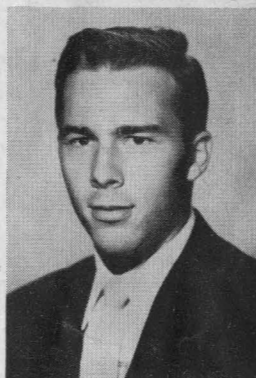
69—James Timmons



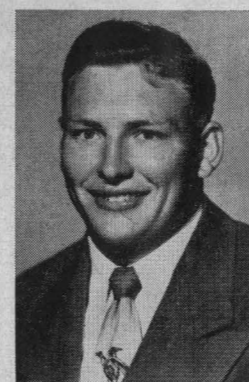
70—John Hudson



71—Bill Crockett (c-c)



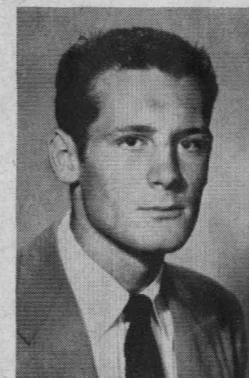
72—Max Schuebel



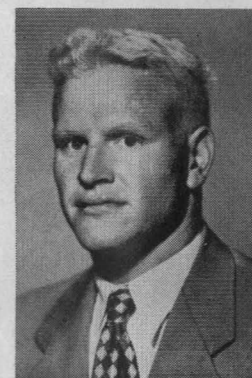
73—LaVon Cox



74—Robert Cashion



75—Layton Golemon



76—James Ellis



FANNIN AT TEXAS

912 MAIN STREET

Salutes the Rice Owls '52

"Stay Dry When the Weather is Wet"

Light weight, compact
Plastic Spectator

PONCHO
WITH HOOD

Fits into your purse
or pocket.

1.25

ORDER BY MAIL

PHONE PR-2231

Oshman's Athletic Dept.



Mmmmm... **CAMELLIA** Ice Cream!

Enjoy catering-quality Camellia Ice Cream often . . . it's a great hit for any occasion . . . after-the-game snacks . . . mealtime dessert or party treat. Buy the large family-size carton . . . or individual cube shaped cartons for personalized flavor selection.



For the name and address of your nearest dealer, call JUstin 0581.

Drinks in Stadium are cooled with
Texas Ice "Sized Ice"

TEXAS ICE & FUEL
COMPANY

6301 Harrisburg

WAside 2154

The Rice Athletic Association Would Appreciate Your Patronizing Our Advertisers

☆ *The Southwest's
Finest
and reasonable, too!*

WELDON *Cafeteria*
4916 South Main

- Open Daily—11:00 a.m. through 8:30 p.m.
- Two Free Parking Lots Adjoining

South End Building Materials Co.

READY MIX CONCRETE

SAND — GRAVEL — CEMENT

South Houston Plant 5102 Galveston Road Phone MI-3328	Deer Park Plant Deer Park, Texas Phone GR-9-2251	Kirby Drive Plant 4830 Kirby Drive Phone LY-9131
---	--	--



77—Dan Winship 78—Richard Chapman 79—Buddy Edwards 80—Jack Day 81—Bill Fisk



WITHIN REACH!

the **RIGHT** way to
plan a play...
or a trip

A coach designs every play to go all the way . . . the same as today's bus traveler does when he chooses **CONTINENTAL TRAILWAYS** thru bus service between many of the metropolitan centers of America. Whether your trip be to the next town, or across the nation, make your first choice Continental!

And for weekend football trips, charter a big Continental Silverliner and follow your team wherever they play.

CONTINENTAL TRAILWAYS

"YOUR HIGHWAY HOST FROM COAST TO COAST"



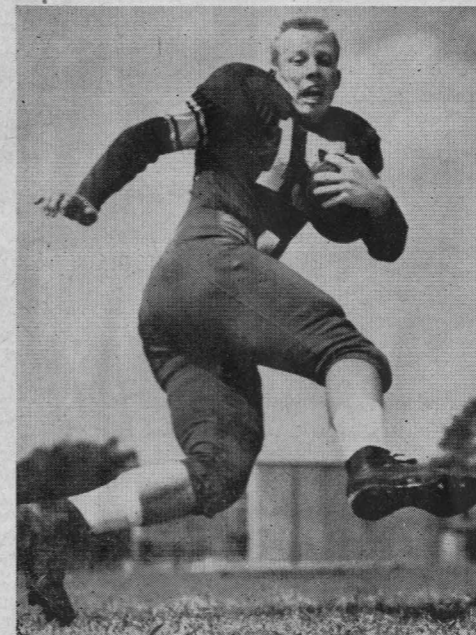
Frederick's Best Tagged Fryers
FRESH, PLUMP, CLEAN
They Sell Themselves

FREDERICK POULTRY & EGG CO.

Vernon C. Fredericks, Sr., Pres.-Mgr.

1817 CENTER • PReston 5195

THREE SENIOR OWL BACKS



Dickie Bob Haddox



Bill Frazier



Billy Ed Daniels

At the games it's

**JASMINE FRANKS AND
HAM SANDWICHES**

(Always Government Inspected)

HOUSTON PACKING COMPANY • 3301 NAVIGATION • PReston 2361

The Best FRIED CHICKEN in Town

Famous throughout the Southwest for its tenderness and flavor. Fast service, low prices. Box orders to take out at no extra cost.

6441 SOUTH MAIN in HOUSTON



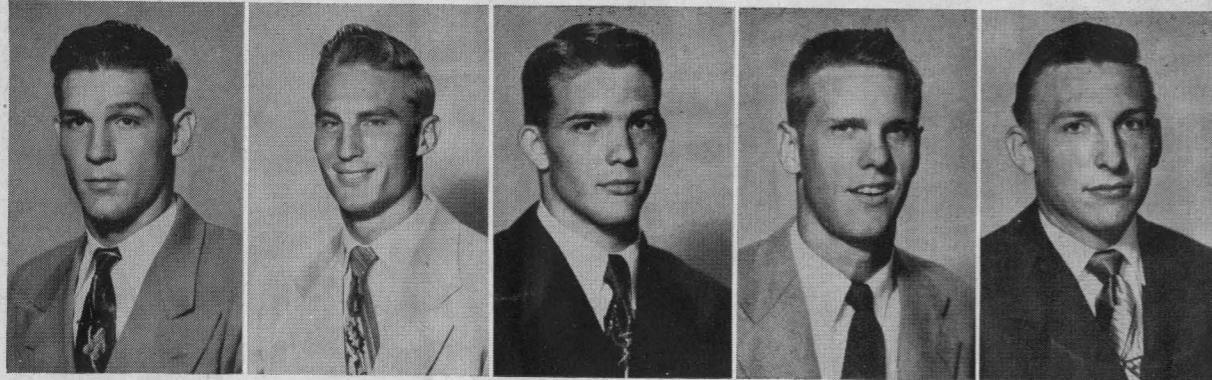
The Rice Athletic Association Would Appreciate Your Patronizing Our Advertisers

PEIDIEN IRON & STEEL CO.

ESTABLISHED 1890

WHOLESALE

HOUSTON, TEXAS



82—R. E. Wortham 83—R. J. Schroeder 84—James Heflin 85 "Chuck" Stephenson 86—LaDon Cox

UNIVERSITY BLVD.
RICE GREENGRASS
10 minutes
SO. SHEPHERD DR.
2015 W. GRAY

明宮
Listen to the **SCORES** right after the game on **KPRC** brought to you by the **MING PALACE**

And if you want to make a score, **DAD**, treat the family to **GOOD** Chinese and American **FOOD** tonight at the **MING PALACE**
The House of Good Food

In the River Oaks Shopping Center

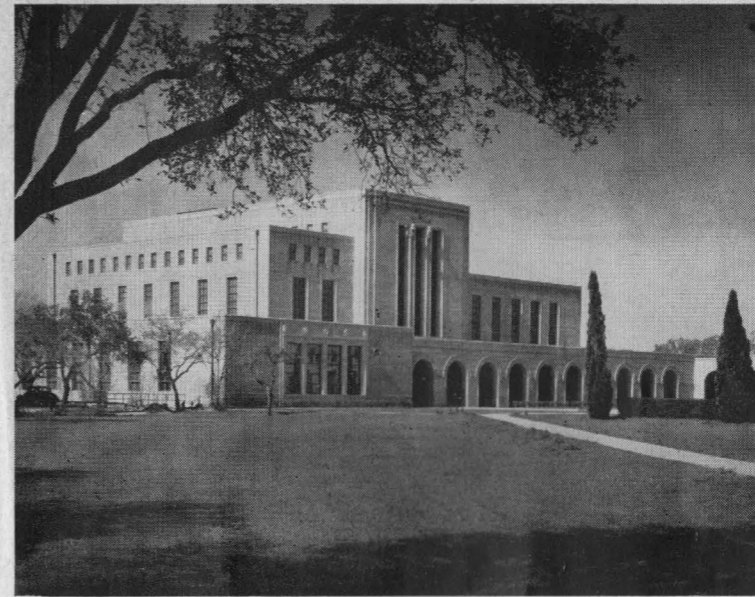
for . . .

Office Forms • Folders
Booklets • Color Printing
Letterpress and Offset
One-Time Carbon Forms
Continuous • Fanfold
Register Forms

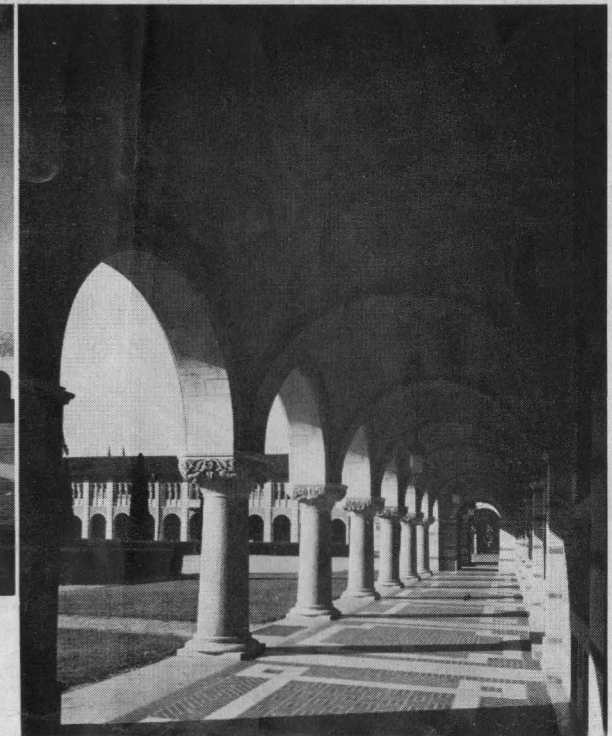


THE REIN CO.

Victor 2611



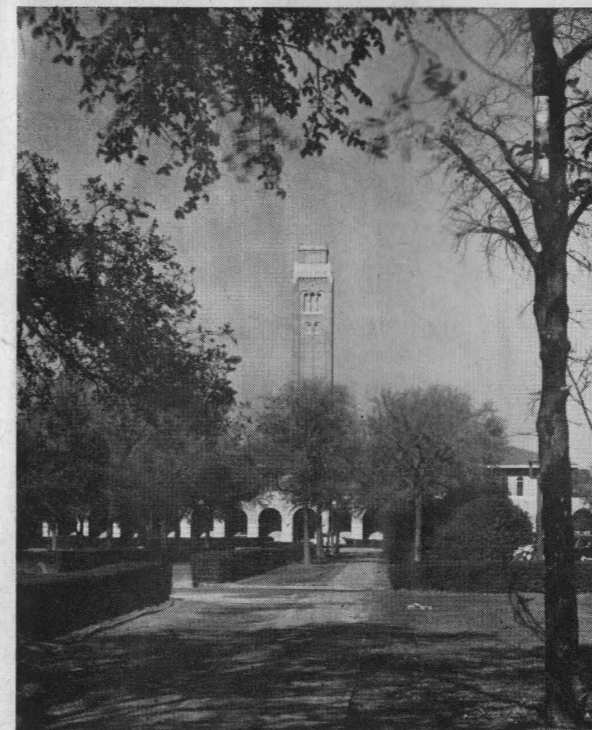
Fondren Library



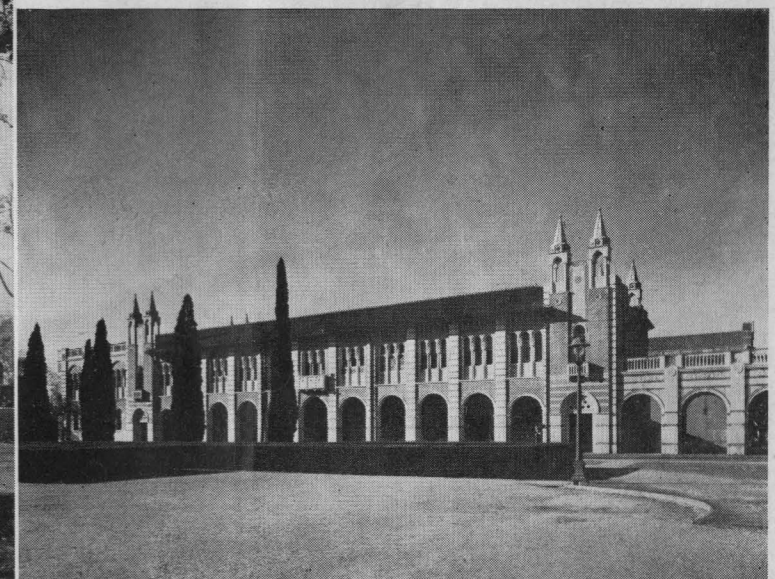
Cloisters of Lovett Hall

Campus Scenes

OF THE RICE INSTITUTE



Engineering Building and Campanile



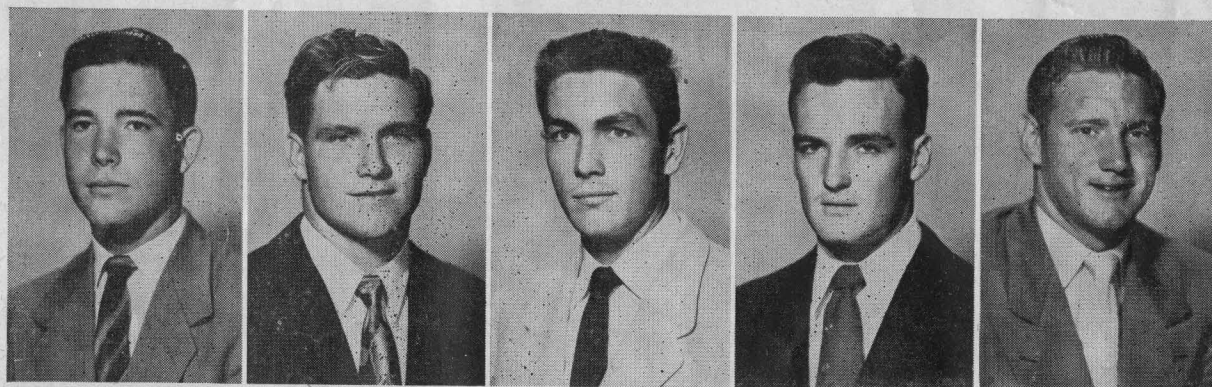
Physics Building

The "Fresh Up"
Family Drink!



You like it...
it likes you

BUY A CASE TODAY!



87—Murff Bledsoe 88—Sammy Ward 89—Blois Bridges 90—Lamoine Holland 91—Tommy Wilson

CHAMPIONSHIP AND BOWL RECORD OF THE RICE OWLS

Rice Institute has fielded a football team for forty years, and in that time the Owls have provided many thrills for grid fans of the Southwest and the nation.

The Owls have played from coast to coast with intersectional competition against teams representing some of the country's finest schools.

Many honors have come the way of Rice teams in the past. The Owls have won the Southwest Conference championship on three occasions—in 1934, 1937, and 1949—and shared the title with Arkansas in 1946.

Rice has been represented in three major bowl games, and the Owls were victorious on each occasion. The 1937 team beat Colorado 28-14 in the Cotton Bowl classic, the 1946 club stopped Tennessee 8-0 in the Orange Bowl, and the 1949 team trimmed the North Carolina Tarheels 27-13 in the Cotton Bowl.

In addition, many other honors have come the way of Rice players and coaches. Several players have been named to All-American teams, and a host of Owls have been accorded All-Southwest Conference honors.

Special honors of last year saw end Bill Howton selected on many All-American teams and invited to play for the College All-Stars, while along with teammate end Sonny McCurry he played under Rice coach Jess Neely in the East-West Shrine game for the benefit of crippled children last December.

ENJOY THE GAME MORE WITH



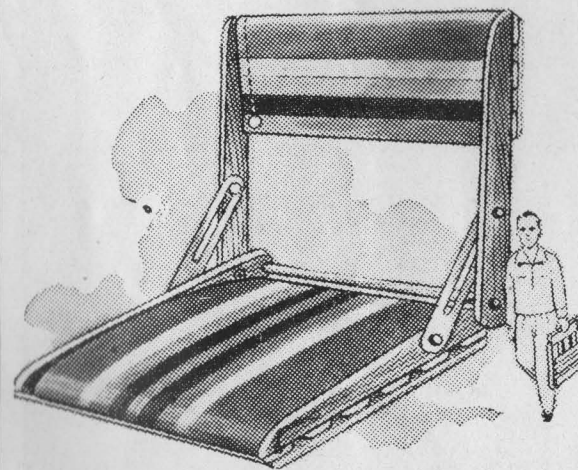
BINOCULARS

And

FIELD GLASSES

Holt's carry a complete line of fine nationally known binoculars and field glasses, all sizes, all prices.

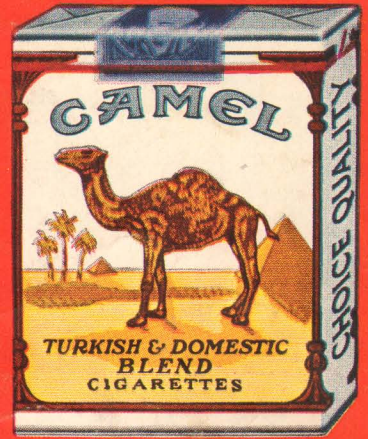
Come in our store at your first opportunity. Visit our camera shop and let us show you these fine glasses. . . .



"Tak-Along" stadium seat and backrest, fine hardwood construction, kapok seat and back, durable fancy striped canvas, hours of comfort.



"I'd walk a mile for a
CAMEL"



*So Mild—
So Flavorful!*

