



Rice vs. Clemson

RICE CAMPUS ★ SEPTEMBER 29

OFFICIAL PROGRAM 25c

**Be Happy -
Go Lucky!**

EILEEN WILSON, Lucky Star of TV and Radio, says:
**At football games I love to cheer
 "Go team!" and "Hip Hooray!"
 But for a better taste I shout,
 "Go Lucky Strike today!"**
(Luckies taste better than any other cigarette!)



**LUCKIES TASTE BETTER
 THAN ANY OTHER CIGARETTE!**

**L.S./M.F.T.-
 Lucky Strike Means Fine Tobacco**

COPR., THE AMERICAN TOBACCO COMPANY

**ONLY ONE
 CAN BE
 BEST**

*Taste Tru-Ade
 and judge for yourself*



THE
Natural
 SOFT DRINK

SOUTH TEXAS NATIONAL BANK

Progressive Banking Service Since 1886

213 MAIN STREET • HOUSTON, TEXAS
 MEMBER FEDERAL DEPOSIT INSURANCE CORPORATION



NOW IN ITS FIFTH YEAR OF OPERATION



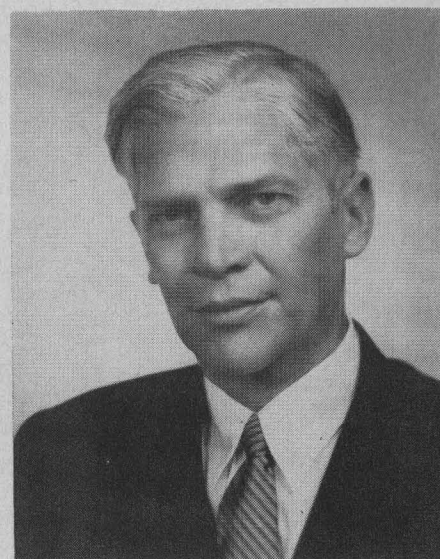
TRANS-TEXAS
 Airways

BOARD OF GOVERNORS OF THE RICE INSTITUTE

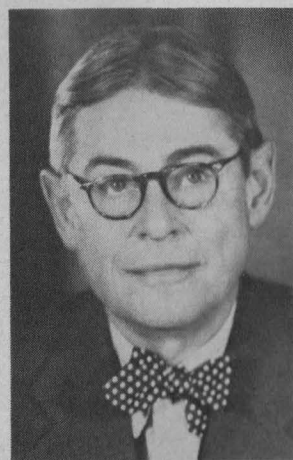
TRUSTEES



Gus S. Wortham



George R. Brown
Chairman



Lamar Fleming, Jr.



William A. Kirkland



J. Newton Rayzor



Dr. Frederick R. Lummis



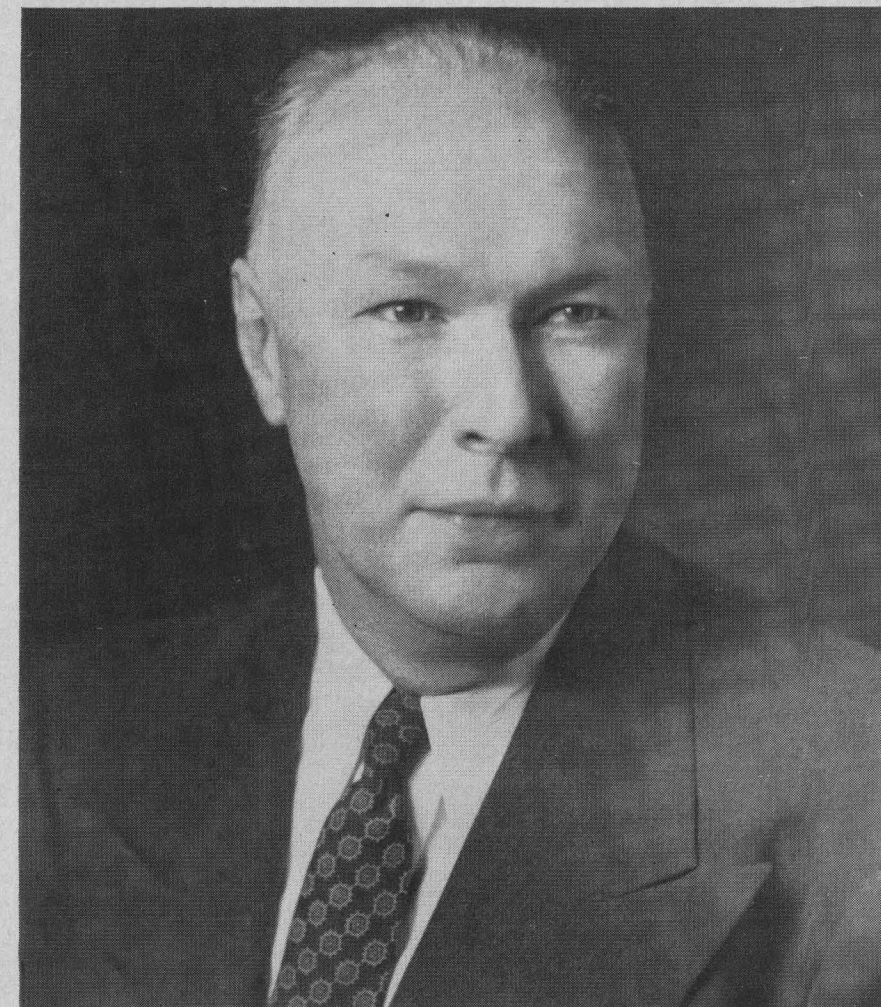
John S. Ivy

TERM MEMBERS

Herbert Allen
Robert P. Doherty

Francis T. Fendley
Walter L. Goldston
H. Malcolm Lovett

Robert H. Ray
Harmon Whittington



DR. WILLIAM V. HOUSTON
President, The Rice Institute

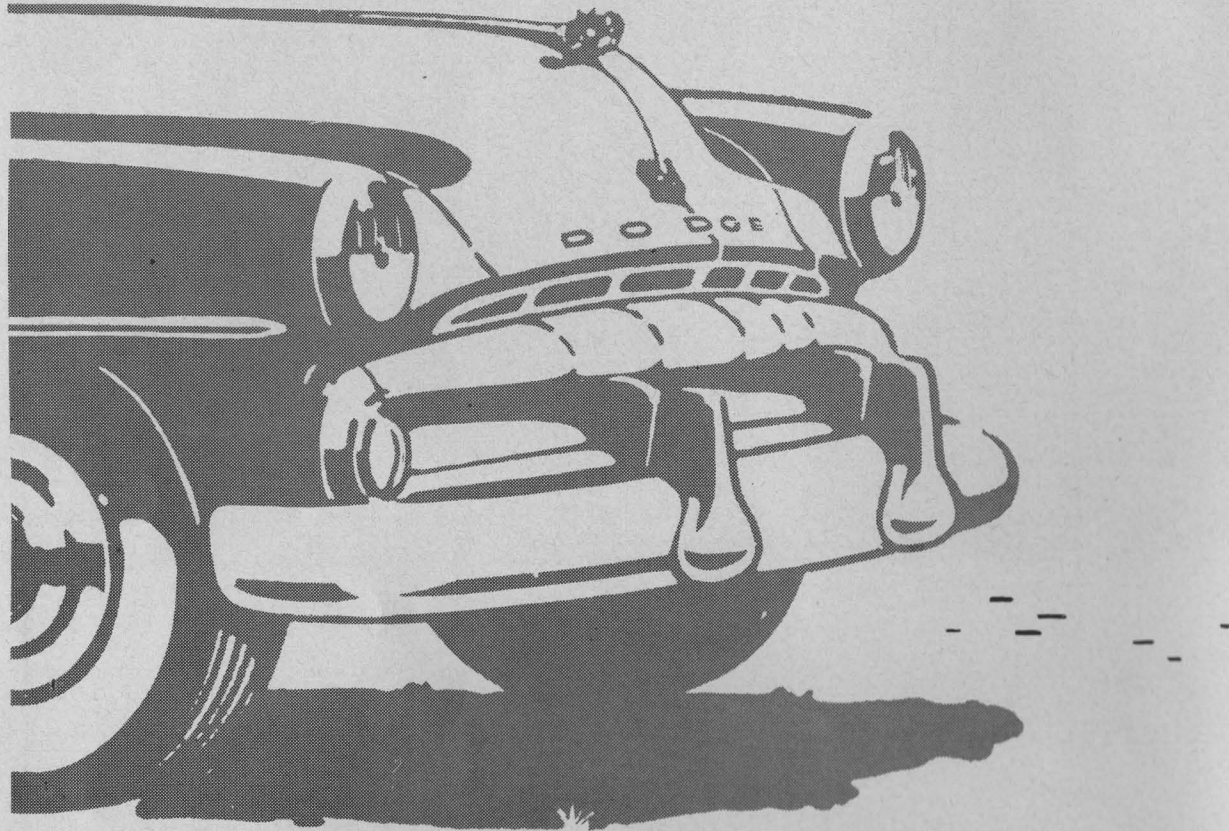
The Rice Institute is pleased to welcome you, as its guests, to this stadium. We are especially proud of it, not only of the structure itself, but of the generous and enthusiastic way in which it was provided by so many citizens of Houston.

Those of you who have not had a previous opportunity are invited to spend a little time looking around the rest of our campus. You may be especially interested in some of the newer buildings such as the Fondren Library, the Abercrombie Engineering Laboratory, and the Gymnasium.

We hope you may enjoy the game you have come to see, and we know that whatever may be the score both of the competing teams will be worthy representatives of their respective institutions.

WILLIAM V. HOUSTON

For the thrill of the season
that lasts for years . . .



Drive a New Dodge
from
JACKSON MOTORS, Ltd.

2404 South Main • Houston

Jackson's Expert Repair Service

Helps You Keep Your Car in Top Shape



Growing *with* *Houston*

CAMERON IRON WORKS, INC.

KATY AT SILVER ROAD
HOUSTON

Oil Well Specialties

TONIGHT'S GAME

Rice Institute's 40th year of competition in intercollegiate football begins tonight with a game against Clemson College that shapes up as a "natural" in a number of ways.

The Owls are opening their second campaign of play in their magnificent new 70,000 seat stadium here on the Rice campus the same as last year—against a team that was victorious the previous January in the Orange Bowl game at Miami. Last year the Owls were fortunate in scoring an impressive 27-7 triumph over Santa Clara in the first game ever played in this stadium. Clemson may be a much tougher customer, for 24 lettermen return from the Tiger squad that was undefeated in ten regular season games last fall (there was one tie in that string), and trimmed the University of Miami 15-14 in the Florida classic New Year's Day.

This game marks the second time in three seasons the Owls have opened their season against Clemson. In 1949, the only other time these two teams have played each other, the Owls scored a smashing 33-7 triumph that set them off on one of the most successful seasons in Rice grid history—climaxed by winning the Cotton Bowl game over North Carolina after annexing the Southwest Conference title. Clemson has been champing at the bit for some time to get even with the Owls.

There are unusually close connections among the coaches of the Rice and Clemson teams. Rice athletic director and head grid coach Jess Neely was the head man at Clemson for nine seasons before coming to the Institute in 1940. His successor at Clemson was Frank Howard, who had played at the University of Alabama when Neely was an assistant there, and who had been a Neely aide throughout his stay at Clemson. Rice line coach Joe Davis came to the Owl camp with Neely from Clemson, and present Tiger assistants Bob Jones and "Goat" McMillan also served under Neely.

It is a pretty good bet that at least one of the stars of tonight's game will be a lad named Billy. The Tigers bill their triple-threat tailback, Billy Hair, as the finest offensive performer in the South, if not the nation. The Owls have a host

of top notch running backs, and three of them are named Billy—Burkhalter, Daniels, and Frazier.

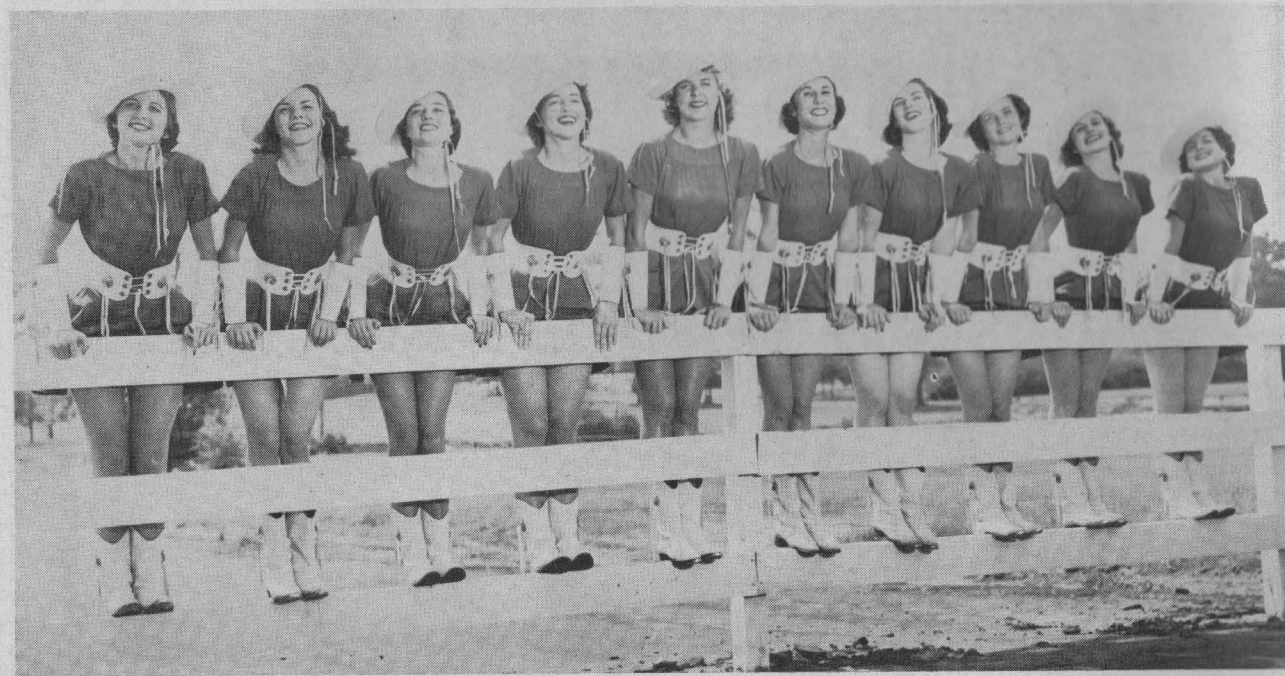
Clemson runs from the single wing and has achieved great success with the so-called "old fashioned" attack. Last season the Tigers had their second undefeated season in three years, and were ranked tenth in the nation in the final Associated Press poll. Hair is the man who guides the attack with extreme capability. Buck George is a hard running wingback threat, and the Tigers are quite adept at passing, as their 23.3 yards per pass completion last fall will testify.

Neely switched from the single wing to the standard "T" (though he mixes in some single wing blocking techniques) several years ago at Rice. Tonight's game will give an indication how well this unusually young and inexperienced group of Owls can make the intricate "T" plays function. While 16 lettermen return from the '50 squad, Rice still must rely quite heavily on sophomores at key positions. Going into the opening game, the Owls still have to determine who will be the No. 1 quarterback, a very important post in the "T" since the man under calls the signals and handles the ball on virtually every play. Neely says he may alternate the three top candidates for the quarterback job all season, but it will be interesting to see who "clicks" best tonight among Dan Drake, Leroy Fenstermaker, and Buddy Grantham.

Owl fans are urged to keep an eye on the fleet halfbacks who can really scamper if they can break loose—such boys as "Kosse" Johnson, Horton Nesrsta, Dickie Bob Haddox, Sammie Burk, the previously mentioned Burkhalter, Daniels, and Frazier, and some others.

The Rice line will get a stern test against the Tigers, as Howard, who was line coach under Neely, still concentrates on fashioning strong lines.

Not only should fans at tonight's game see a good ball game, but the halftime ceremony should be one of the finest ever to be presented at a grid game here. The famed Kilgore Rangerettes, who have appeared at the Rose, Sugar and Cotton Bowl games and at the College All-Star game in Chicago, will give the entire halftime show with a closely timed 13-minute routine.



TEN KILGORE RANGERETTES

Touchdown OWLS!



MODEL 17T2

For your favorite sport on TV...

See



**BLACK-DAYLITE
TELEVISION**

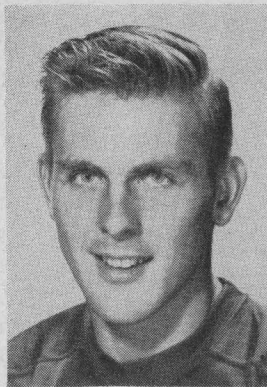
All year round, your favorite sport is at your fingertips, clearly and sharply, with a new G-E Black-Daylite Television receiver. Thrill to the big-as-life, close-up, steady picture in a beautiful cabinet. You'll be delighted with any of the smart up-to-date models your G-E dealer is now showing. Ask for a home demonstration. Before you buy TV, see G-E.

Distributed By:

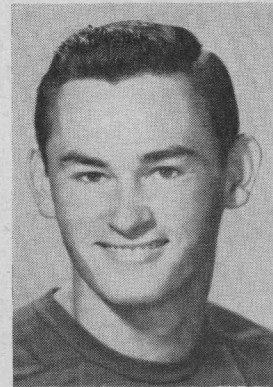
GENERAL ELECTRIC SUPPLY CORPORATION

Houston • Beaumont • Corpus Christi • San Antonio

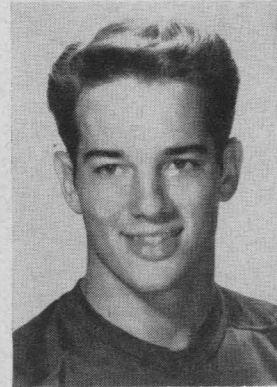
Listen to the G-E Football Roundup with Red Barber every Saturday over Station KNUZ



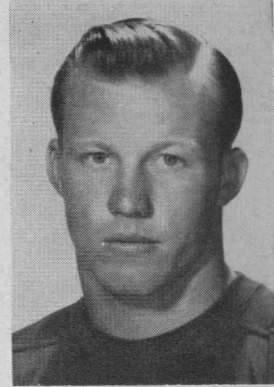
10—Sammie Burk



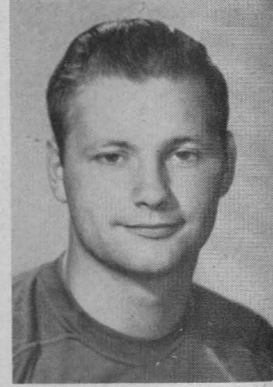
11—Horton Nesrsta



12—Bill Burkhalter



15—Dickie Bob Haddox



16—Bobby Warren

NAME BRAND *Sporting Goods*

OPEN DAILY 9 A.M.-6 P.M.

AT REDUCED PRICES

Houston Sports Shop

4717 Main Street, Houston • Telephone KE-8660, JU-2131

We are Proud . . .

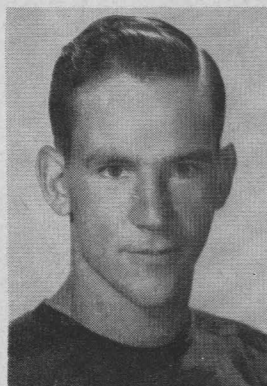
Of our many young depositors who are starting now to acquire the independence of a savings account—the satisfaction of planned financing.

For over 30 years it has been our policy to extend to our customers a friendly understanding of their financial responsibilities. We invite you to drop by 712 Main to talk with us about our Free Services, Savings Plans, Loan Plans, Trust Facilities and Normal Charge Services.

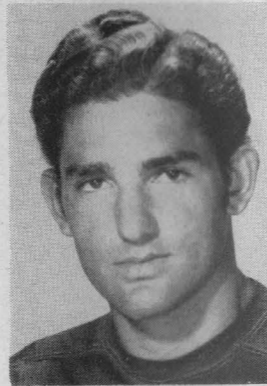
Member Federal Deposit Insurance Corporation

National Bank of Commerce
OF HOUSTON

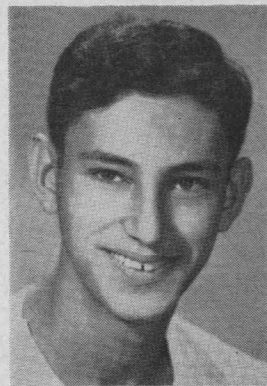
"The Bank of Courtesy"



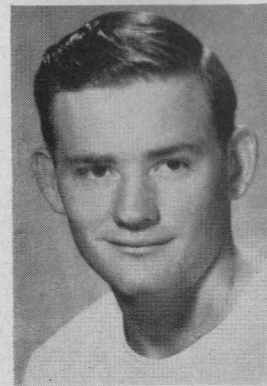
91—Billy Fisk



90—George Pontikes



Louis Loeser, Asst. Trainer



Weldon Price, Manager



For the All-American Week-End



Make The Shamrock your headquarters hotel — where gracious hospitality and a warm welcome await you. You'll enjoy the comfort, the faultless service, the superb cuisine, the luxurious facilities that only The Shamrock affords its guests.

Cavalcade of Stars

There's always exciting big-name entertainment in The Shamrock's famed Emerald Room . . . stars of stage, radio and motion pictures appear continually, in person, in the Cavalcade of Stars. You'll enjoy your "night out" in The Shamrock's supper clubs.

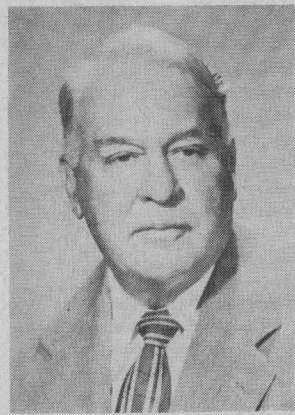
GLENN McCARTHY, President

M. JACK FERRELL, Executive Manager

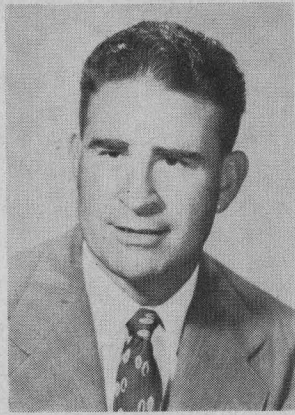
THE RICE INSTITUTE ATHLETIC COACHING STAFF



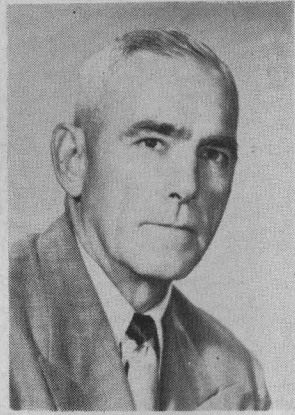
Joe Davis
Line Coach



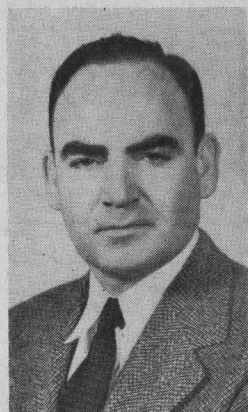
Cecil Grigg
Backfield Coach



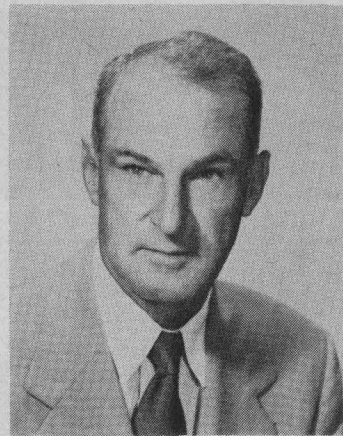
A. M. Bale
End Coach



Dell Morgan
Asst. Coach



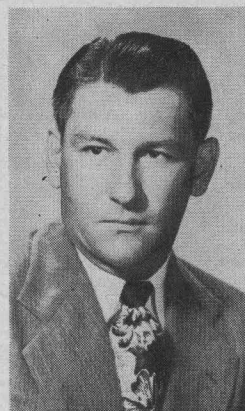
Emmett Brunson
Track Coach
Bus. Mgr. of Athletics



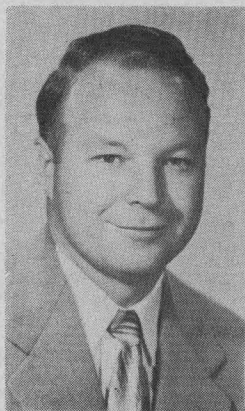
Jess Neely
Athletic Director
Head Football Coach



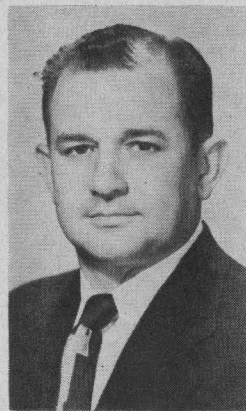
Charles Moore
Freshman Football Coach



Harold Stockbridge
Baseball Coach
Asst. Football Coach



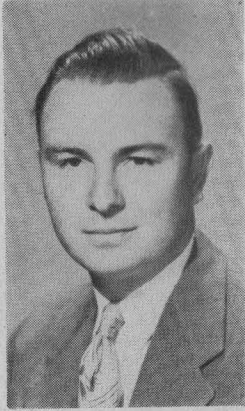
Don Suman
Basketball Coach



Eddie Wojecki
Head Trainer



Carroll Martin
Office Manager



Bill Whitmore
Sports News Director

OFFICIAL WATCH FOR THIS GAME

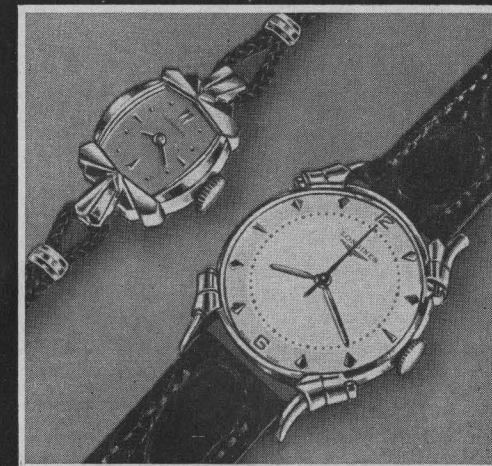


Longines



The World's Most Honored Watch

ACCEPTED AS OFFICIAL WATCH
FOR TIMING
CHAMPIONSHIP SPORTS EVENTS
IN ALL FIELDS ALL OVER THE WORLD



*Product of
Longines Wittnauer Watch Company*

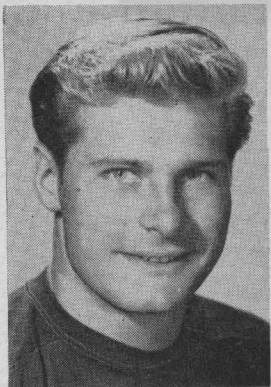
UNIVERSAL PACKING & GASKET CO.

Houston Owned
and Operated

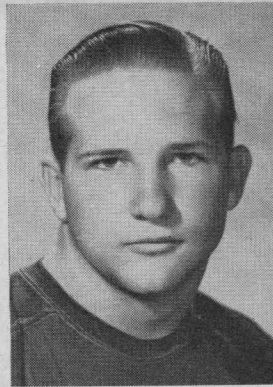


Home of Universal, where packings and gaskets are manufactured
for every industrial need.

The Rice Athletic Association Would Appreciate You Patronizing Our Advertisers



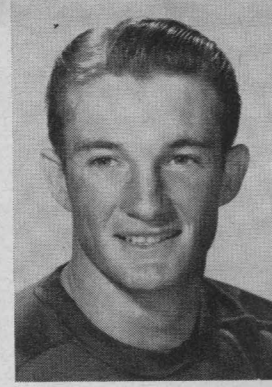
19—Bob Garbrecht



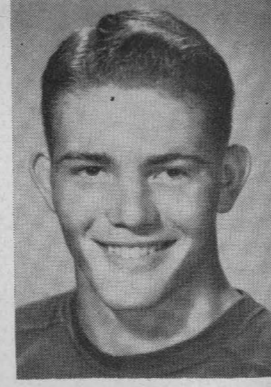
20—Bobby Leggett



21—Denny Marsters



22—Gene Silver



23—James Heflin



GO TO THE GAMES with **HUMBLE**

The Humble station in your neighborhood is football headquarters. It has full details of Southwest Conference football schedules, road maps and other information.

Stop there before you start this year's football trips so that your car will perform better, look better, as you drive to the games:

Have your car washed and lubricated; change the oil to Esso Extra (best you can buy!);

let the driveway salesman check your battery, your radiator, your fan-belt, your tires; and fill up with Esso Extra gasoline for extra performance on every mile you travel.

Then . . . on your way . . . stop for service under the Humble sign. Humble rest rooms are extra clean, Humble service is friendly, courteous and prompt . . . Again this year, go to the games with Humble!

HUMBLE OIL & REFINING CO.



KERN TIPS
Houston



CHARLIE JORDAN
Dallas



BILL MICHAELS
San Antonio



VES BOX
Dallas

Tune in Humble's broadcasts of the Southwest Conference games you just can't see. This quartet of top-notch sportscasters will be on the air each weekend. This is another *extra* service under the Humble sign!

See Humble's FOOTBALL FILMS on TV—Sundays

QUINBY EMPLOYMENT SERVICE

"A Name Worth Remembering"

You can benefit from our many years experience in the personnel field

Executive, Office, Sales, and Technical Personnel

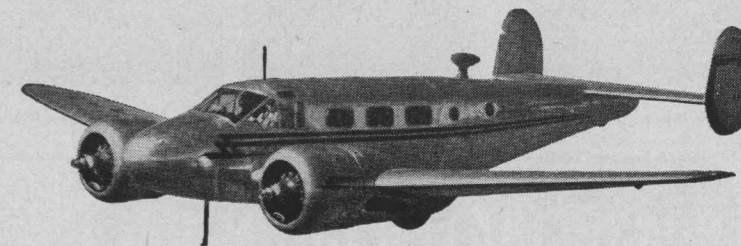
Member National Employment Board, Chamber of Commerce and Employment Counselors

409 Bankers Mortgage Bldg.

Houston 2, Texas



Beechcraft *in the air*



and REED on the ground

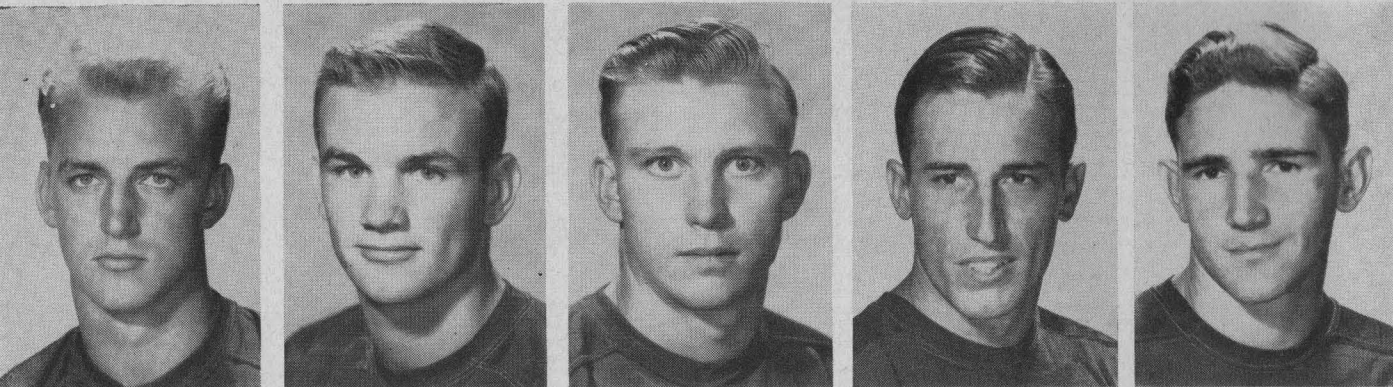


Beechcraft is a great name in the air. The Beech Executive Transport and Bonanza models are the World's finest airplanes designed specifically to meet the requirements of leading executives who appreciate the importance of air travel in modern industry.

On the ground the name Reed means more efficient, economical and pleasant hours in the air for you. The J. D. Reed Company has built a superior sales and service organization to serve those who accept only the best. Twenty years of such service has placed Reed far ahead in facilities and technical know-how.

If you are in the market for a new aircraft or in need of service on your present one, you will find the J. D. Reed Company a good place to do business





24—Dan Drake

25—Buddy Grantham

26—Leroy Fenstermaker

31—Teddy Riggs

35—Bill Frazier

CONSOLIDATED CHEMICAL INDUSTRIES INC.

Heavy Chemicals for Industry

640 MELLIE ESPERSON BLDG.
HOUSTON 2, TEXAS

ERNEST COKER'S

The Old College Inn

FAMOUS FOR THIRTY YEARS FOR THE FINEST
STEAKS AND BIG BAKED POTATOES

CLOSED TUESDAYS

6545 SOUTH MAIN STREET

LY 6484

Touchdown!

You are the quarterback . . . you plot your own financial objective . . . today, tomorrow and beyond. You call the touchdowns, when and how you want them, when you put life insurance on your team. If your strategy calls for an adequate retirement income . . . for a college education for the children . . . for cash and monthly income for the family, life insurance has exactly the "play" needed for your offensive. Ask your Great Southerner to chart these "plays" for you.

GREAT SOUTHERN

Life

INSURANCE COMPANY

HOME OFFICE

HOUSTON, TEXAS

The Rice Athletic Association Would Appreciate You Patronizing Our Advertisers

Good Luck Owls!

W. D. HADEN CO.

CAMERON IRON WORKS

ED LOREHN

MISSION MANUFACTURING CO.

T. CAMPBELL

W. L. GOLDSTON

W. J. GOLDSTON

JOHNSTON OIL FIELD SERVICE CORP.

BILL TAYLOR

FLOYD KARSTEN

SEISMIC EXPLORATIONS, INC.

F. F. REYNOLDS

DOW CHEMICAL CO.

CHAS. F. REED

FALCON SEABOARD DRILLING CO.

McCULLOUGH TOOL CO.

O. J. McCULLOUGH

HOUSTON UNDERWRITERS' AGENCY

A. W. LARKIN

WALLACE WILSON

TRANS TEXAS AIRWAYS

EARL McKAUGHAN

GERALD MORA, CONTRACTOR

GAYLORD JOHNSON

FOSTER SCHEMPF

H. F. ROSENBUSH

H. C. COCKBURN

NATIONAL TANK CO.

FLOYD SENTER

GULF TRACTOR & EQUIPMENT CO.

GEORGE MARTIN

LANSON DITTO

W. STEWART BOYLE

LYNN B. HAMILTON

DICK SCHWAB

JACK FRAZIER

J. A. NEATH

ROBERT E. MOORE

W. S. BAILEY

TRIANGLE REFINERIES, INC.

J. B. SAUNDERS

KING CONSTRUCTION CO.

C. E. KING

LOUIS PULASKI

PRODUCTION SERVICE CORP.

J. F. CORLEY

GROVER GEISELMAN

JOHN COFFEE

DAN MOODY

ALVIN MOODY

C. W. HANKS

HOWARD TELLEPSEN

TRINITY RIVER LUMBER CO.

HOUSTON SHELL & CONCRETE CO.

TOMMY HUDGENS

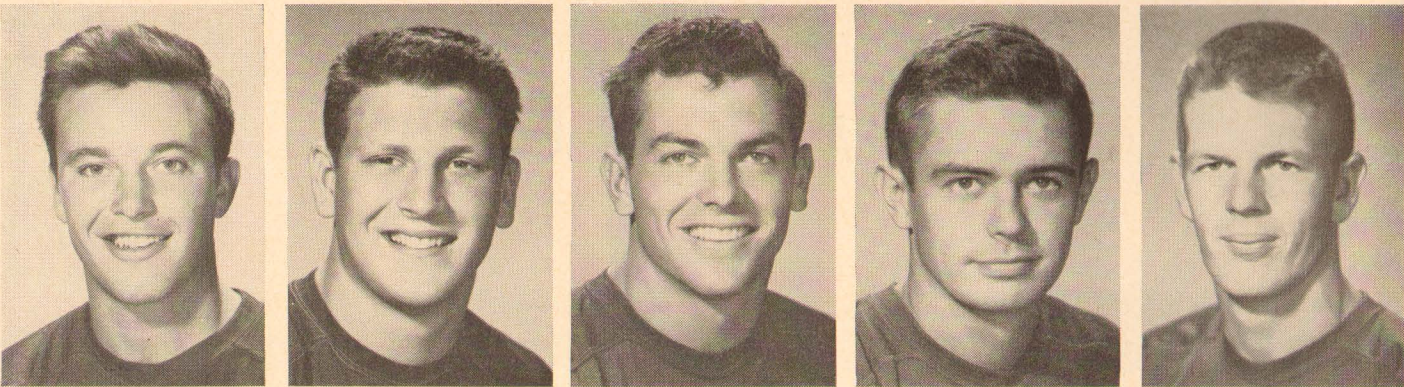
M. C. DAVIDSON

W. CECIL SISSON

BLACK BROLLIER INC.

COOPER & MATTHEWS LUMBER CO.

E. D. ADAMS



36—Billy Ed Daniels 42—Don Whittaker 43—Carl Johnson 44—Herb Eubanks 45—David "Kosse" Johnson

Guy Francis

RESTAURANT

ON YOUR WAY TO THE STADIUM

SEA FOODS — STEAK — CHICKEN

3801 Farnham St.

(Located Between Shepherd and Greenbriar—1 Block South Richmond)

THE EXTRA POINT THAT MAKES THE DIFFERENCE —PILSENIZED—

Join the "Select" group today!

After the game tonight, enjoy a big glass of today's Southern Select beer. It's *really* dry and light—*really* bitter-free and satisfying.

New Pilsenized Southern Select gives you greater beer-drinking pleasure all evening long! Try it—tonight!


Galveston-Houston Breweries, Inc.

Galveston, Texas

Southern Select BEER

My Friends and I agree
It's Really Dry and
Bitter-free! says Molly
Timbrook of Houston.

DRINK **Coca-Cola** *add Zest*



RICE (OFFENSIVE) BY POSITIONS

LE Howton 84	LT Walls 73	LG Little 61	C Day 50	RG Wagner 66	RT Crockett 71	RE McCurry 80
			QB Drake 26			
LHB Riggs 31		FB D. Johnson 45		RHB Burkhalter 12		

★

CLEMSON (DEFENSIVE) BY POSITIONS

LE Withers 63	LT Patton 60	LG Barton 37	C D. Wade 22	RG Crawford 50	RT Gressette 44	RE Smith 84
			LB Quarles 40			
LHB Baker 57		S Moxley 38		RHB Knoebel 81		

OFFICIALS

Referee: Ray McCulloch; Umpire: C. A. Powell; Head Linesman: Lou Evans;
Field Judge: J. W. Grey; Electric Clock Operator: Lamar Camp

See line-ups on page 20 for Clemson offense and Rice defense.

RICE INSTITUTE
SQUAD

10	Sammie Burk '53	B	19	5-11	170
11	Horton Nesrsta '54	B	20	5-9	149
12	Bill Burkhalter '52	B	21	5-10	175
15	Dickie B. Haddox '53	B	19	5-9	160
16	Bobby Warren '54	B	19	5-7	150
19	Bob Garbrecht '54	B	19	6-1	190
20	Bobby Leggett '54	B	18	6-0	170
21	Denny Marsters '54	B	19	6-2	175
22	Gene Silver '52	B	22	5-10	160
23	James Heflin '54	B	20	6-2	195
24	Dan Drake '54	B	20	6-1	188
25	Buddy Grantham '54	B	18	6-2	180
26	LeroyFenstermaker '54	B	19	6-2	190
31	Teddy Riggs '52	B	21	5-10	172
35	Bill Frazier '53	B	20	5-10	165
36	Billy Ed Daniels '53	B	20	6-0	175
42	Don Whittaker '54	B	18	6-1	187
43	Carl Johnson '54	B	18	5-11	177
44	Herb Eubanks '53	B	20	5-9	150
45	"Kosse" Johnson '54	B	19	6-0	180
46	James Spencer '54	B	19	5-11	180
49	Gino Biasatti '54	B	19	5-10	184
50	Jack Day '53	C	21	6-0	200
54	Don Rhoden '53	C	18	5-11	195
55	Leo Rucka '54	C	20	6-3	204
56	Bobby Moore '53	C	21	6-1	210
59	A. J. Loth '54	C	20	6-1	220
60	Simon Verret '52	G	22	5-9	190
61	Gene Little '53	G	22	6-1	205
62	LaMar Lee '54	G	19	5-11	195
64	Walter Schleyer '54	G	19	5-11	190
65	Dan Hart '54	G	19	5-10	190
66	"Hans" Wagner '53	G	20	6-1	198
67	W. C. Treadway '54	G	21	6-1	201
68	John Boswell '54	G	20	6-0	200
69	James Timmons '53	G	21	6-2	210
70	John Hudson '54	T	18	6-0	210
71	Bill Crockett '53	T	19	6-2	203
72	Max Schuebel '54	T	19	6-1	195
73	Glenn Walls '52	T	22	6-3	210
74	Hugh Wilson '54	T	20	6-0	215
75	Ted Watson '53	T	21	6-3	202
76	Kenneth Lewis '54	T	19	6-3	212
77	Dan Winship '54	T	19	6-0	215
78	Richard Chapman '54	T	18	6-5	214
79	Buddy Edwards '54	T	20	6-2	230
80	Sonny McCurry '52	E	21	6-4	185
81	Jack Taylor '54	T	21	6-1	193
82	Bobby Allen '53	E	20	6-2	172
83	R. J. Schroeder '54	E	18	6-4	190
84	Bill Howton '52	E	21	6-2	180
85	Al Boughton '52	E	21	6-5	200
86	Bill Wright '52	E	21	6-1	212
87	Hardy Dean '53	E	21	6-1	180
88	Sammy Ward '54	E	19	6-0	190
89	Blois Bridges '54	E	19	6-1	178
90	George Pontikes '53	E	20	6-1	190
91	Billy Fisk '54	E	20	6-0	170

SCIENCE
DISCOVERED IT
YOU CAN
PROVE IT-



"NO UNPLEASANT
AFTER-TASTE"

WHEN YOU SMOKE

CHESTERFIELD

MORE COLLEGE MEN AND WOMEN BUY
CHESTERFIELD THAN ANY OTHER CIGARETTE

CLEMSON COLLEGE
SQUAD

20	Cook '53	B	20	5-9	153
21	Paredes '54	B	21	5-8	174
22	J. D. Wade '53	C	21	6-1	181
23	Hankinson '55	B	18	5-11	190
25	Hudson '53	G	21	6-2	186
26	Ross '55	B	19	5-10	170
27	DiMucci '52	G	20	5-9	192
29	Whitten '55	B	17	5-9	180
30	George '55	B	19	6-0	175
31	L. Gressette '54	B	21	6-0	190
32	Ward '53	B	20	5-8	157
34	Knight '52	G	22	6-1	190
36	D. A. Wade '53	B	21	5-10	175
37	Barton '53	G	22	6-1	176
38	Moxley '54	B	19	6-0	172
40	Quarles '54	B	20	5-10	188
41	Manos '52	G	20	5-10	189
42	Wyatt '54	G	19	5-11	195
43	Freudenberger '54	G	21	6-2	198
44	N. Gressette '54	T	20	6-1	210
45	Wrightenberry '53	T	21	6-2	209
46	Pate '54	B	20	5-11	190
47	Byrd '54	T	19	6-2	204
48	Rodgers '54	B	20	5-9	179
50	Crawford '54	G	21	5-10	190
51	White '55	T	19	6-3	215
52	Graham '52	T	21	6-4	218
55	Rivers '55	B	18	6-0	185
57	Baker '53	E	19	6-2	163
58	Noel '54	E	20	6-0	190
59	Thompson '53	B	21	5-9	178
60	Patton '52	T	23	6-0	219
61	Hipp '54	T	19	6-1	215
63	Withers '54	E	19	6-2	173
64	Mooneyhan '52	T	20	6-2	208
65	Herlong '52	B	21	6-0	204
66	Kempson '53	E	19	6-2	178
67	Rowe '54	B	21	6-0	202
68	Kennedy '53	B	19	5-10	181
69	Hopkins '55	B	19	6-2	215
70	Wells '54	B	19	6-0	176
73	Bryant '53	C	20	6-0	186
74	Jolly '54	C	20	6-3	185
75	McLellan '54	C	18	5-11	205
76	Gaskins '53	E	20	6-4	197
77	Hair '53	B	21	5-10	170
78	Jackson '55	E	18	6-1	185
80	Arnold '53	T	22	5-10	192
81	Knoebel '53	B	22	5-11	169
82	Radcliff '53	B	19	5-10	178
83	Preacher '52	E	23	6-1	195
84	Smith '52	E	20	6-1	182
86	La Montagne '53	G	19	6-0	205
87	Gentry '53	E	20	6-1	170
88	Shirley '53	B	19	6-3	211

DRINK *Coca-Cola*

add Zest



CLEMSON (OFFENSIVE)

BY POSITIONS

LE	LT	LG	C	RG	RT	RE
Kempson	Mooneyhan	Manos	Bryant	DiMucci	Byrd	G. Smith
66	64	41	73	27	47	84
			BB			WB
			Rodgers			George
			48			30
	TB		FB			
	Hair		Shirley			
	77		88			



RICE (DEFENSIVE)

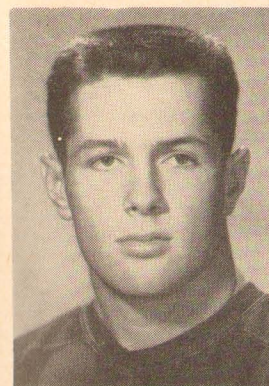
BY POSITIONS

LE	LT	LG	C	RG	RT	RE
Howton	Chapman	Verret	Little	Timmons	Hudson	McCurry
84	78	60	61	69	70	80
			LB			
			Rhoden			
			54			
	LH				RH	
	Silver				Burk	
	22				10	
			S			
			Daniels			
			36			

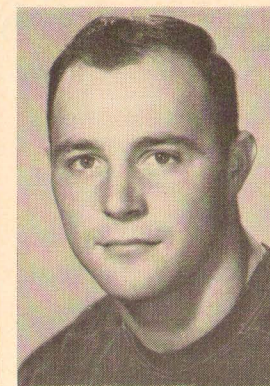
OFFICIALS

Referee: Ray McCulloch; Umpire: C. A. Powell; Head Linesman: Lou Evans;
Field Judge: J. W. Grey; Electric Clock Operator: Lamar Camp

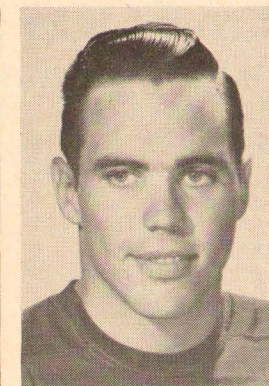
See line-ups on page 17 for Clemson defense and Rice offense.



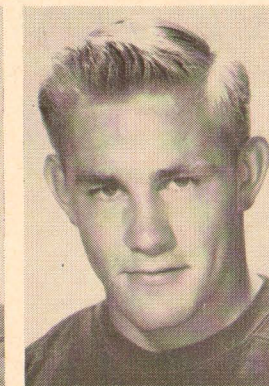
46—James Spencer



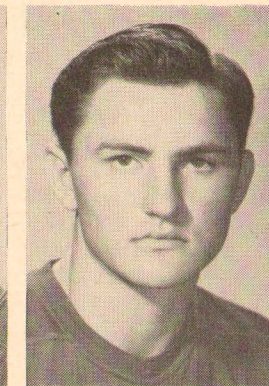
49—Gino Biasatti



50—Jack Day



54—Don Rhoden



55—Leo Rucka



220 Main Street

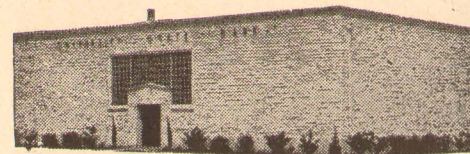
"THE BANK OF CORDIALITY"

Member Federal Deposit Insurance Corporation

"It takes good teamwork to play championship football and to build buildings."

— CONGRATULATIONS —

W. S. Bellows Construction Corp.



COMPLETE
METROPOLITAN
SERVICE

WITH
RESIDENTIAL
CONVENIENCE



Serving Southwest Houston

West University Place, Southside Place and Bellaire

AUTOMOBILE TELLER SERVICE

UNIVERSITY STATE BANK

Keystone 5574

6135 KIRBY DRIVE at AMHERST

FIRST STATE BANK

BELLAIRE, TEXAS

MOhawk 3413

5123 BELLAIRE BOULEVARD

MEMBER FEDERAL DEPOSIT INSURANCE CORPORATION

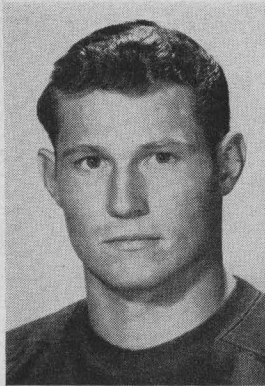
1951 RICE OWLS' FOOTBALL ROSTER

NUMERICAL ORDER

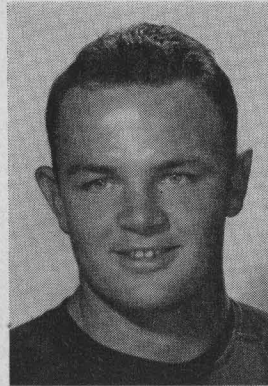
No.	Name	Pos.	Wt.	Ht.	Age	Class	Exp.	Home Town
10	Sammie Burk	HB	170	5' 11"	19	Jr.	1 VL	Luling
11	Horton Nesrsta	HB	149	5' 9"	20	Soph.	1 Sq.	San Antonio
12	Bill Burkhalter, Tri-Capt.	HB	175	5' 10"	21	Sr.	2 VL	Bandera
15	Dickie Bob Haddox	HB	160	5' 9"	19	Jr.	1 VL	Navasota
16	Bobby Warren	HB	150	5' 7"	19	Soph.	Frosh	Austin
19	Bob Garbrecht	FB	190	6' 1"	19	Soph.	Frosh	New York City
20	Bobby Leggett	QB	170	6' 0"	18	Soph.	Frosh	Harlingen
21	Denny Marsters	FB	175	6' 2"	19	Soph.	Frosh	Kingsville
22	Gene Silver	HB	160	5' 10"	22	Sr.	1 VL	Harlingen
23	James Heflin	HB	195	6' 2"	20	Soph.	Frosh	Mart
24	Dan Drake	QB	188	6' 1"	20	Soph.	1 Sq.	Fort Worth
25	Buddy Grantham	QB	180	6' 2"	18	Soph.	Frosh	Grand Prairie
26	Leroy Fenstemaker	QB	190	6' 2"	19	Soph.	Frosh	Llano
31	Teddy Riggs	HB	172	5' 10"	21	Sr.	1 VL	Pearsall
35	Bill Frazier	FB	165	5' 10"	20	Jr.	1 Sq.	Pasadena
36	Billy Ed Daniels	HB	175	6' 0"	20	Jr.	1 Sq.	Kerrville
42	Don Whittaker	FB	187	6' 1"	18	Soph.	Frosh	Dallas
43	Carl Johnson	HB	177	5' 11"	18	Soph.	Frosh	Houston
44	Herb Eubanks	HB	150	5' 9"	20	Jr.	Tsfr.	Houston
45	David "Kosse" Johnson	FB	180	6' 0"	19	Soph.	Frosh	Baytown
46	James Spencer	HB	180	5' 11"	19	Soph.	Frosh	Conroe
49	Gino Biasatti	FB	184	5' 10"	19	Soph.	Frosh	Dallas
50	Jack Day	C	200	6' 0"	21	Sr.	1 VL	Galena Park
54	Don Rhoden	C	195	5' 11"	18	Jr.	1 VL	Kerrville
55	Leo Rucka	C	204	6' 3"	20	Soph.	Frosh	Crosby
56	Bobby Moore	C	210	6' 1"	21	Jr.	1 VL	Amarillo
59	A. J. Loth	C	220	6' 1"	20	Soph.	1 Sq.	Fredericksburg
60	Simon Verret	LG	190	5' 9"	22	Sr.	1 VL	Port Arthur
61	Gene Little	LG	205	6' 1"	22	Jr.	1 VL	Corpus Christi
62	LaMar Lee	RG	195	5' 11"	19	Soph.	Frosh	Porest Lake, Minn.
64	Walter Schleyer	LG	190	5' 11"	19	Soph.	Frosh	San Angelo
65	Dan Hart	RG	190	5' 10"	19	Soph.	Frosh	Houston
66	Dan "Hans" Wagner	RG	198	6' 1"	20	Jr.	1 Sq.	Schulenburg
67	W. C. Treadway	LG	201	6' 1"	21	Soph.	Frosh	Houston
68	John Boswell	RG	200	6' 0"	20	Soph.	1 Sq.	Nocona
69	James Timmons	RG	210	6' 2"	21	Jr.	1 Sq.	Sweetwater
70	John Hudson	LT	210	6' 0"	18	Soph.	Frosh	Center
71	Bill Crockett	RT	203	6' 2"	19	Jr.	1 VL	Bonham
72	Max Schuebel	RT	195	6' 1"	19	Soph.	Frosh	Houston
73	Glenn Walls, Tri-Capt.	LT	210	6' 3"	22	Sr.	2 VL	Dallas
74	Hugh Wilson	RT	215	6' 0"	20	Soph.	Frosh	Port Arthur
75	Ted Watson	RT	202	6' 3"	21	Jr.	1 VL	Corpus Christi
76	Kenneth Lewis	LT	212	6' 3"	19	Soph.	Frosh	Conroe
77	Dan Winship	LT	215	6' 0"	19	Soph.	Frosh	Houston
78	Richard Chapman	RT	214	6' 5"	18	Soph.	Frosh	Waxahachie
79	Buddy Edwards	LT	230	6' 2"	20	Sopt.	1 Sq.	Texarkana, Ark.
80	Sonny McCurry	RE	185	6' 4"	21	Sr.	2-VL	Wharton
81	Jack Taylor	LT	193	6' 1"	21	Soph.	Frosh	Baytown
82	Bobby Allen	RE	172	6' 2"	20	Jr.	1 VL	Sonora
83	R. J. Schroeder	RE	190	6' 4"	18	Soph.	Frosh	East Bernard
84	Bill Howton, Tri-Capt.	LE	180	6' 2"	21	Sr.	2-VL	Plainview
85	Al Boughton	RE	200	6' 5"	21	Sr.	2 Sq.	Sonora
86	Bill Wright	LE	212	6' 1"	21	Sr.	1 VL	Houston
87	Hardy Dean	RE	180	6' 1"	21	Jr.	2 Sq.	Conroe
88	Sammy Ward	RE	190	6' 0"	19	Soph.	Frosh	Laredo
89	Blois Bridges	RE	178	6' 1"	19	Soph.	Frosh	Grand Prairie
90	George Pontikes	LE	190	6' 1"	20	Jr.	1 Sq.	Houston
91	Billy Fisk	LE	170	6' 0"	20	Soph.	1 Sq.	Irving

1951 CLEMSON COLLEGE ROSTER

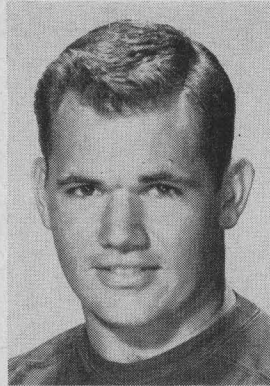
No.	Name	Pos.	Wt.	Ht.	Age	Class	Home Town
73	Joe Bryant	C	186	6' 0"	20	Junior	Savannah, Ga.
75	Bill McLellan	C	205	5' 11"	18	Soph.	Dillon, S. C.
22	Don Wade	C	181	6' 1"	21	Senior	Lenoir City, Tenn.
74	Bobby Jolly	C	185	6' 3"	20	Soph.	Lenoir City, Tenn.
27	Dan DiMucci	G	192	5' 9"	20	Senior	McKeesport, Pa.
41	Pete Manos	G	189	5' 10"	20	Senior	Brooklyn, N. Y.
25	J. C. Hudson	G	186	6' 2"	21	Junior	North Charleston, S. C.
50	Barclay Crawford	G	190	5' 10"	21	Junior	Kelso, Tenn.
37	Tom Barton	G	176	6' 1"	22	Junior	Lancaster, S. C.
34	Herman Knight	G	190	6' 1"	22	Senior	Rock Hill, S. C.
86	Joe La Montagne	G	205	6' 0"	19	Soph.	Walterboro, S. C.
42	Charlie Wyatt	G	195	5' 11"	19	Soph.	Greenville, S. C.
43	Otto Freudenberger	G	198	6' 2"	21	Soph.	St. Petersburg, Fla.
64	Jack Mooneyhan	T	208	6' 2"	20	Senior	Columbia, S. C.
47	Gary Byrd	T	204	6' 2"	19	Junior	Hartsville, S. C.
61	Joe Hipp	T	215	6' 1"	19	Soph.	Newberry, S. C.
80	David Arnold	T	192	5' 10"	22	Junior	Clanton, Alabama
60	Bob Patton	T	219	6' 0"	23	Senior	Gray Court, S. C.
52	Bernie Graham	T	218	6' 4"	21	Senior	Erie, Pa.
45	Earl Wrightenberry	T	209	6' 2"	21	Junior	Burlington, N. C.
44	Nathan Gressette	T	210	6' 1"	20	Soph.	St. Matthews, S. C.
51	Clyde White	T	215	6' 3"	19	Fresh.	Greenville, S. C.
84	Glenn Smith	E	182	6' 1"	20	Senior	Washington, D. C.
63	George Withers	E	173	6' 2"	19	Junior	Spencer, N. C.
83	Billy Preacher	E	195	6' 1"	23	Senior	Ridgeland, S. C.
66	Otis Kempson	E	178	6' 2"	19	Junior	Kingstree, S. C.
57	Archie Baker	E	163	6' 2"	19	Junior	Charleston, S. C.
87	Frank Gentry	E	170	6' 1"	20	Junior	Erwin, Tenn.
76	Dreher Gaskins	E	197	6' 4"	20	Junior	Orangeburg, S. C.
58	Everett Noel	E	190	6' 0"	20	Soph.	Saluda, S. C.
78	Scott Jackson	E	185	6' 1"	18	Fresh.	Manning, S. C.
48	George Rodgers	BB	179	5' 9"	20	Junior	Pittsburgh, Pa.
65	Doug Herlong	BB	204	6' 0"	21	Senior	Rock Hill, S. C.
46	Milton Pate	BB	190	5' 11"	20	Soph.	Winsboro, S. C.
40	Jimmy Quarles	BB	188	5' 10"	20	Soph.	Abbeville, S. C.
67	Bennie Rowe	BB	202	6' 0"	21	Soph.	Hartsville, S. C.
30	Buck George	WB	175	6' 0"	19	Fresh.	Rock Hill, S. C.
68	Frank Kennedy	WB	181	5' 10"	19	Junior	Midland, Pa.
23	Crimmins Hankinson	WB	190	5' 11"	18	Fresh.	Waynesboro, Ga.
36	D. A. Wade	WB	175	5' 10"	21	Junior	Spartanburg, S. C.
32	Jimmy Ward	WB	157	5' 8"	20	Junior	Jackson, Tenn.
81	Fred Knoebel	WB	169	5' 11"	22	Junior	West Orange, N. J.
29	Red Whitten	WB	180	5' 9"	17	Fresh.	Macon, Ga.
69	Jim Hopkins	WB	215	6' 2"	19	Fresh.	McCormick, S. C.
88	Jim Shirley	FB	211	6' 3"	19	Junior	Seneca, S. C.
31	Lawrence Gressette	FB	190	6' 0"	21	Soph.	St. Matthews, S. C.
59	Marion Thompson	FB	178	5' 9"	21	Junior	N. Augusta, S. C.
82	Charles Radcliff	FB	178	5' 10"	19	Junior	Norfolk, Va.
77	Billy Hair	TB	170	5' 10"	21	Junior	Walterboro, S. C.
21	Bob Paredes	TB	174	5' 8"	21	Soph.	Irwin, Pa.
70	Jimmie Wells	TB	176	6' 0"	19	Soph.	Columbia, S. C.
20	Peter Cook	TB	153	5' 9"	20	Junior	Spartanburg, S. C.
38	Gene Moxley	TB	172	6' 0"	19	Soph.	Dublin, Ga.
55	Buddy Rivers	TB	185	6' 0"	18	Fresh.	Louisville, Ga.
26	Don Ross	TB	170	5' 10"	19	Soph.	Rock Hill, S. C.



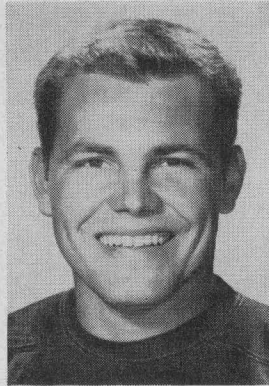
56—Bobby Moore



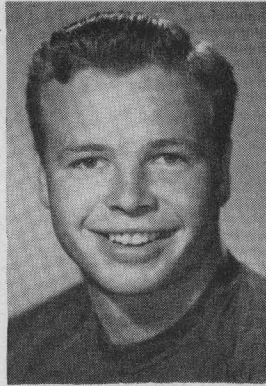
59—A. J. Loth



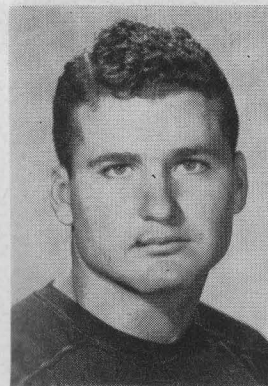
60—Simon Verret



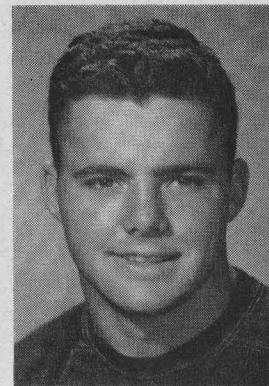
61—Gene Little



62—LaMar Lee



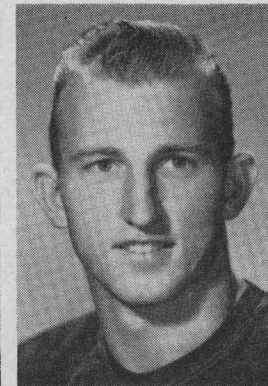
64—Walter Schleyer



65—Dan Hart



66—Dan "Hans" Wagner



67—W. C. Treadway



68—John Boswell

☆ *The Southwest's
Finest
and reasonable, too!*

WELDON Cafeteria

4916 South Main

- Open Daily—11:00 a.m. through 8:30 p.m.
- Two Free Parking Lots Adjoining

South End Building Materials Co.

READY MIX CONCRETE

SAND — GRAVEL — CEMENT

South Houston Plant
5102 Galveston Road
Phone MI-3328

Kirby Drive Plant
4830 Kirby Drive
Phone LY-9131

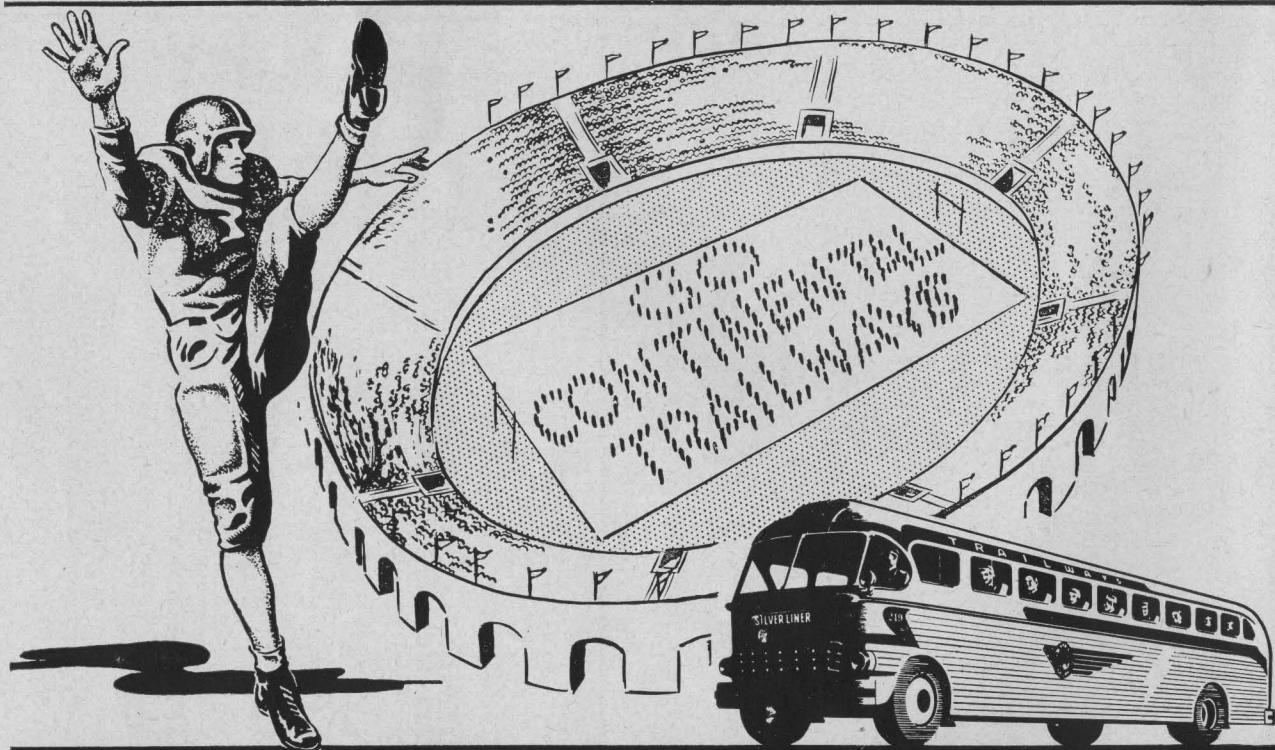
COMPLIMENTS

OF

HERRIN TRANSPORTATION COMPANY

2300 WALKER

FA-5111



CHARTER BUSES FOR GROUP TRAVEL

Drinks in Stadium are
cooled with Texas Ice "Sized Ice"

TEXAS ICE & FUEL COMPANY

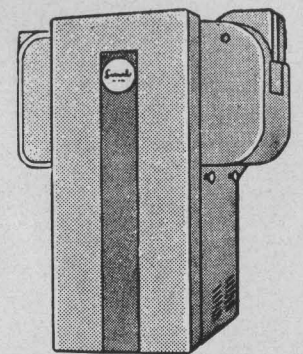


6301 Harrisburg

• WAYSIDE 2154

Servel All-Year GAS AIR CONDITIONING

★ Keep healthy in your
business and in your home
. . . Install Servel All-Year
Gas Air Conditioning. The
ONE UNIT that gives you
the perfect comforts of
WINTER HEATING . . .
SUMMER COOLING and
Controlled Air Circulation
for the "in-between sea-
sons."



FOR THE BEST IN GAS SERVICE CALL . . .

UNITED GAS

THE BIGGEST BARGAIN IN YOUR HOME TODAY.
PHONE AT 5111



RICE
ATHLETIC
MEDICAL
STAFF

Rice Institute athletes receive the finest of care in regard to the treatment and prevention of injuries.

In the photo at the upper left are the men who oversee this important phase of the athletic program, the team physicians and head trainer.

Left to right, they are Dr. Jack Brannon and Dr. Ed Smith, consulting physicians, Dr. Hugh Welch, team physician, and Eddie Wojecki, head trainer.

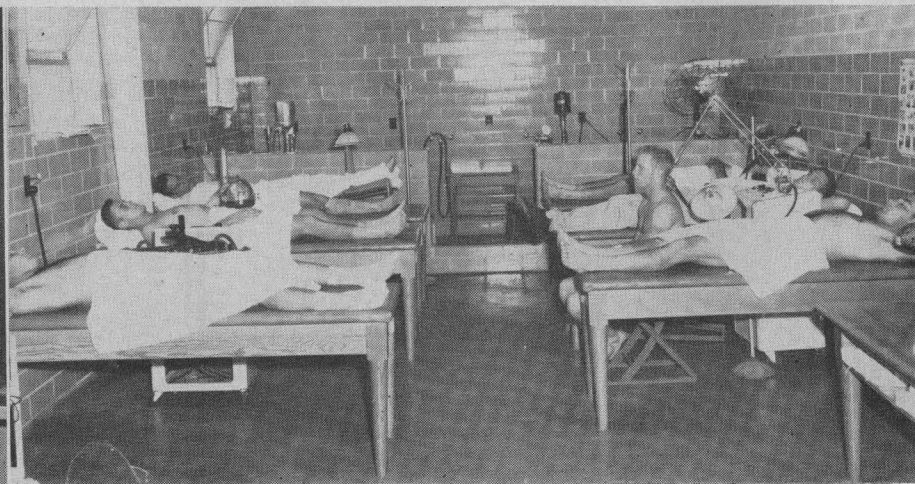
A very important factor in prevention of injuries to athletes is the acquisition and maintenance of good equipment designed to provide the greatest protection. The man who looks after the Owls' athletic equipment is J. B. Sorsby (lower left), who has been at Rice 20 years, the last ten years with the athletic department.

One of the principal features of Rice's fine new gymnasium is the elaborate training room quarters, supervised by the Owls' well-known trainer, Wojecki, who was named National "Trainer of the Year" in 1946. At lower right are some Owl gridmen making use of the varied devices specifically designed for treatment of athletic injuries.

No injury, regardless of how minor, escapes the attention of the trainer. Each player is given a thorough physical examination by a special team of ten physicians before the season begins.

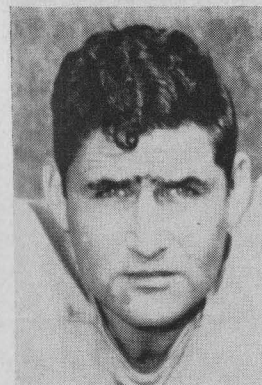


ATHLETIC EQUIPMENT ROOM



TRAINER'S ROOM

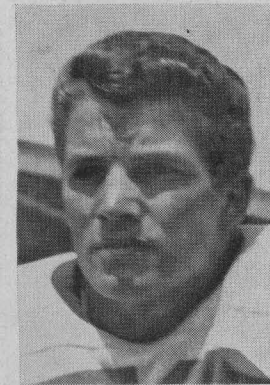
CLEMSON TIGERS



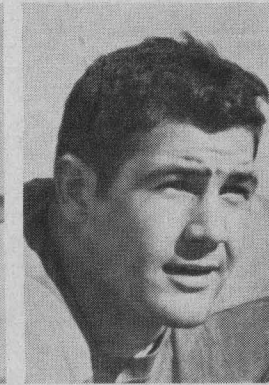
37—Tom Barton



52—Bernie Graham



59—Marion Thompson



27—Dan DiMucci



82—Charles Radcliff

Jason Humber
Class of '22

W. F. Smith
Class of '26

HOWE & WISE
CONSULTING ENGINEERS
JASON HUMBER / W. F. SMITH

AT LUNCH OR DINNER

You can always enjoy a delicious meal in the
Warwick's Famous Crystal Dining Room

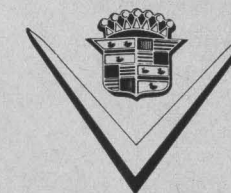
A PLEASURE TO SERVE YOU



R. T. CULLATHER, Manager

WARWICK HOTEL
AND APARTMENTS

Houston 1, Texas



**D. B. McDANIEL CADILLAC
COMPANY**

1320 MILAM STREET

HOUSTON, TEXAS

The Rice Athletic Association Would Appreciate You Patronizing Our Advertisers

Do Your Level Best!

That's what YOU expect of the athletes who represent you on the football field, the cinder track, the basketball court and in all other events.

That's what YOU will expect from the great athletes who will represent the United States in the Olympic Games at Helsinki, Finland, next summer.

By the same token, that's what the athletes expect of YOU, Mr. and Mrs. American Fan.

They expect you to DO YOUR LEVEL BEST in contributing to the United States Olympic Fund so that EVERY great athlete in the nation will sail the Ocean to meet the challenge of the world.

Other nations are going to send forth powerful teams to end America's amazing record of Olympic victories. WE must meet that challenge. WE must have the financial assistance of ALL America.

Do YOUR level best now. Make your check or money order to
THE UNITED STATES OLYMPIC ASSOCIATION

And mail to

RICE ATHLETIC ASSOCIATION
P. O. Box 1892
Houston 1, Texas

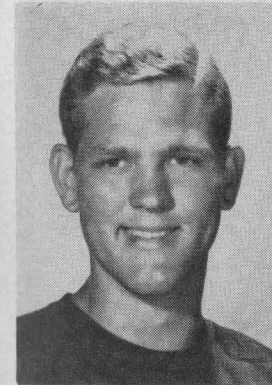
Please fill out this form:

I herewith subscribe \$ _____ to the United States Olympic Fund.

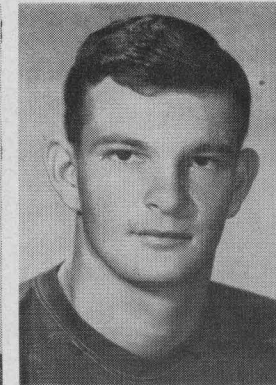
Name of donor _____

Address _____

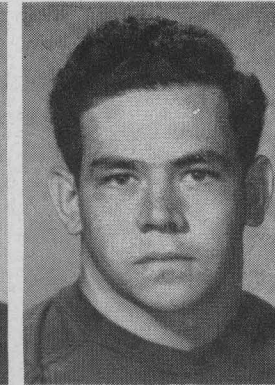
Every donor of twenty-five or more dollars will receive a complimentary pictorial summary of the 1952 Olympic Games.



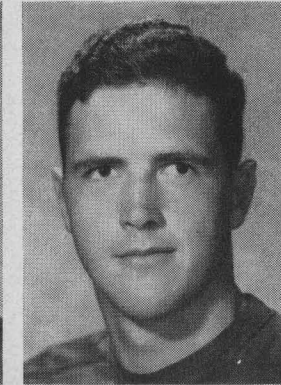
75—Ted Watson



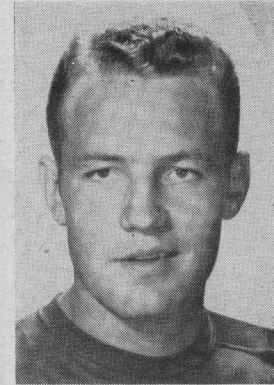
76—Kenneth Lewis



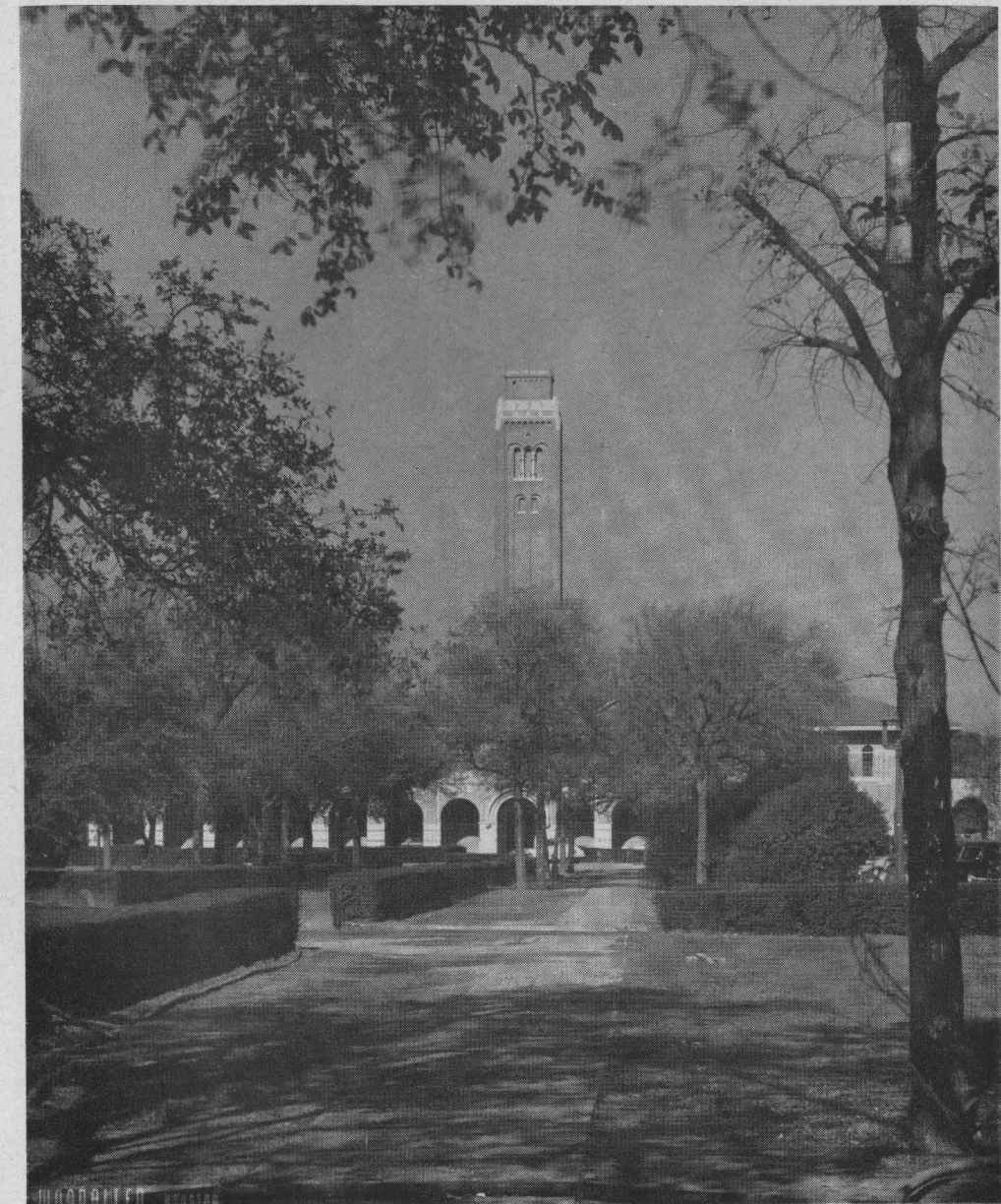
77—Dan Winship



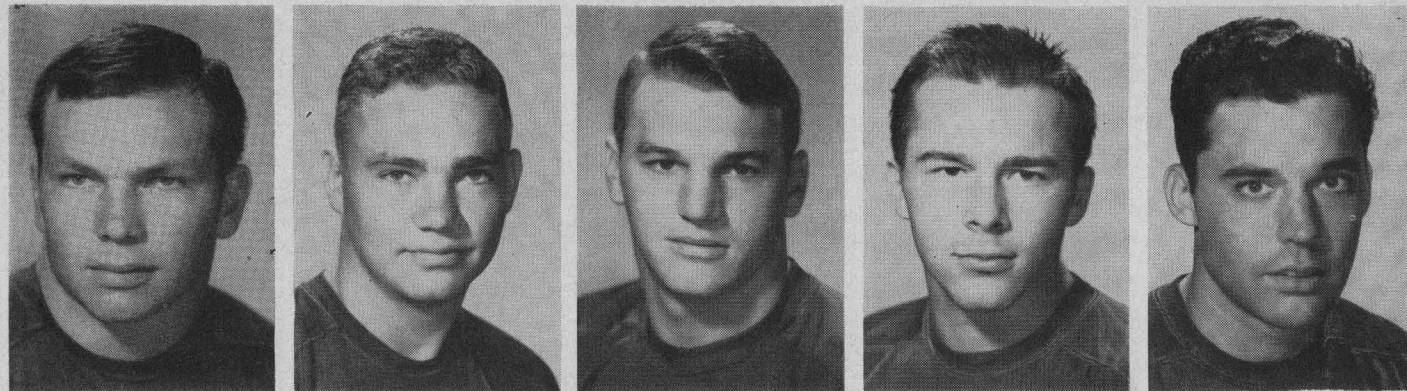
78—Richard Chapman



79—Buddy Edwards



The Campanile on Rice Institute Campus



69—James Timmons 70—John Hudson 71—Bill Crockett 72—Max Schuebel 73—Glenn Walls

RICE 1951-52

BASKETBALL SCHEDULES

VARSITY SCHEDULE

(non-conference games)

- November 27 (Tues.) Stephen F. Austin College at Nacogdoches
- December 1 (Sat.) Sam Houston State College at Huntsville
- December 3 (Mon.) Louisiana State University at Houston
- December 8 (Sat.) Tulane University at New Orleans
- December 11 (Tues.) Sam Houston State College at Houston
- December 14 (Fri.) Stephen F. Austin College at Houston
- December 18 (Tues.) Kansas University at Lawrence, Kansas
- December 20 (Thur.) Vanderbilt University at Nashville, Tennessee
- December 22 (Sat.) Tennessee University at Knoxville, Tennessee
- December 26-27-28-29 Southwest Conference Tournament at Dallas

(conference games)

- January 5 (Sat.) Southern Methodist University at Dallas
- January 8 (Tues.) Texas Christian University at Houston
- January 11 (Fri.) Texas A. & M. College at College Station
- January 15 (Tues.) University of Texas at Houston
- January 19 (Sat.) University of Arkansas at Fayetteville, Arkansas
- January 25 (Fri.) Baylor University at Waco

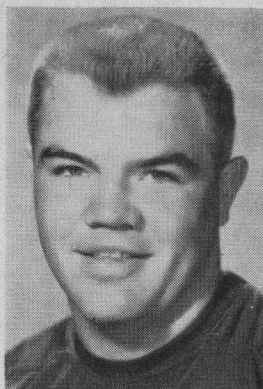
(Interim for mid-term examinations)

- February 9 (Sat.) University of Arkansas at Houston
 - February 12 (Tues.) Texas Christian University at Ft. Worth
 - February 15 (Fri.) Baylor University at Houston
 - February 19 (Tues.) Southern Methodist University at Houston
 - February 26 (Tues.) University of Texas at Austin
 - March 1 (Sat.) Texas A. & M. College at Houston
- All Rice home games at the Rice Gym will begin at 8:15 p.m.

FRESHMAN SCHEDULE

- December 7 (Fri.) Allen Academy at Bryan
- December 12 (Wed.) Wharton Jr. College at Wharton
- January 11 (Fri.) Texas A. & M. frosh at College Station
- January 15 (Tues.) U. of Texas frosh at Houston
- January 19 (Sat.) Victoria Jr. College at Victoria
- February 9 (Sat.) Victoria Jr. College at Houston
- February 15 (Fri.) Wharton Jr. College at Houston
- February 19 (Tues.) Allen Academy at Houston
- February 26 (Tues.) U. of Texas at Austin
- March 1 (Sat.) Texas A. & M. frosh at Houston

(Two games to be added later)



74—Hugh Wilson

CLEMSON TIGERS



73—Joe Bryant 45—Earl Wrightenberry 60—Bob Patton 47—Gary Byrd 64—Jack Mooneyhan

Frederick Poultry and Egg Co.

Distributors of

PETER RABBIT (LARGE WHITE SELECTED)
FRESH EGGS

and also that

DELICIOUS BARREL-BREADED NORTHWESTER
PHEASANT CHICKEN AT YOUR GROCER

VERNON C. FREDERICK, President

1817 Center Phone PR 5195 HOUSTON, TEXAS

Foote's Cafeteria

*Houston's Finest Suburban
Dining Room*

2 Blocks West of Stadium

Continuous Service 11:00 A.M. to 8:30 P.M.

2407 RICE BOULEVARD

7 Days a Week

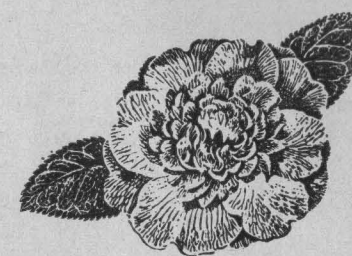
Mmmm . . . delicious . . . that's no exaggeration about Diced Cream being 35% richer than ordinary ice cream.

And, say . . . the individual carton appeals to me, too . . . and the idea that everyone gets the flavor he likes.

Yes, I'm sold on Diced Cream . . . there's nothing like it in all the world!



For Name and Address of
Nearest Dealer Call JU-0581



CAMELLIA DICED CREAM

The Rice Athletic Association Would Appreciate You Patronizing Our Advertisers

RICE ALL-AMERICAN FOOTBALL PLAYERS

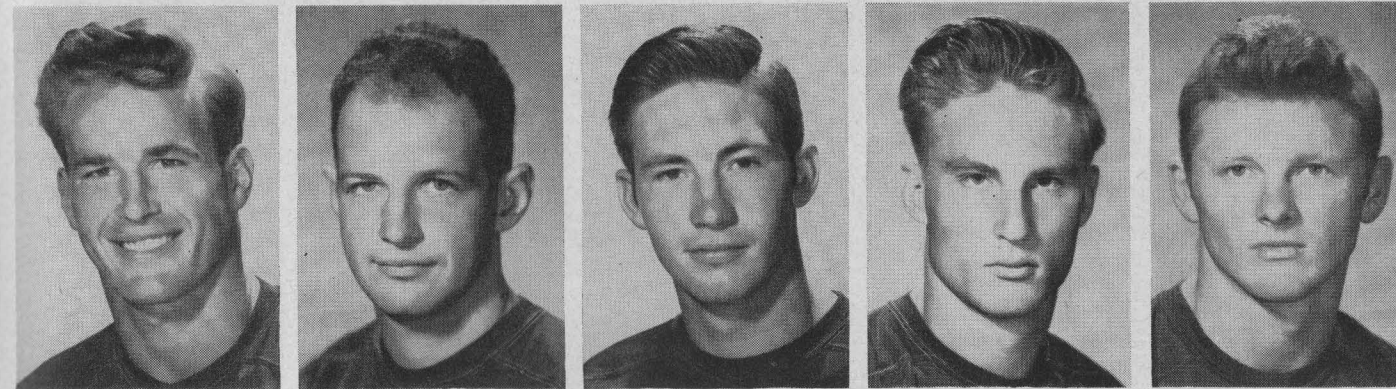
- 1949—"FROGGY" WILLIAMS, *end*
 JOE WATSON, *center*
- 1946—WELDON HUMBLE, *guard*
- 1944—H. J. NICHOLS, *guard*
- 1935—JOHN McCAULEY, *fullback*
- 1934—BILL WALLACE, *halfback*

RICE ALL-SOUTHWEST CONFERENCE PLAYERS

- | | |
|---------------------------------------------------------------------------------------------------------------------------------------|-----------------------------------------------------------------------------------------------------|
| 1950—PAUL GIROSKI, <i>tackle</i> | 1942—WELDON HUMBLE, <i>guard</i>
DICK DWELLE, <i>fullback</i> |
| 1949—"FROGGY" WILLIAMS, <i>end</i>
JOE WATSON, <i>center</i>
RALPH MURPHY, <i>tackle</i>
GERALD WEATHERLY, <i>linebacker</i> | 1941—ART GOFORTH, <i>guard</i> |
| 1948—"FROGGY" WILLIAMS, <i>end</i>
JOE WATSON, <i>center</i> | 1940—FRED HARTMAN, <i>tackle</i>
KEN WHITLOW, <i>center</i> |
| 1947—JOE WATSON, <i>center</i>
J. W. MAGEE, <i>guard</i> | 1939—OLIE CORDILL, <i>halfback</i> |
| 1946—WELDON HUMBLE, <i>guard</i>
HUEY KEENEY, <i>halfback</i>
CARL RUSS, <i>fullback</i> | 1935—JOHN McCAULEY, <i>fullback</i>
LECHE SYLVESTER, <i>end</i> |
| 1945—BOB NEMIR, <i>halfback</i> | 1934—BILL WALLACE, <i>halfback</i>
JOHN McCAULEY, <i>fullback</i>
PRIMO MILLER, <i>tackle</i> |
| 1944—H. J. NICHOLS, <i>guard</i>
GEORGE WALMSLEY, <i>halfback</i> | 1931—LOU HASSELL, <i>tackle</i> |
| 1943—CHARLES MALMBERG, <i>tackle</i> | 1926—WASH UNDERWOOD, <i>guard</i> |
| | 1925—WASH UNDERWOOD, <i>guard</i>
1921—JOHN UNDERWOOD, <i>guard</i> |
| | 1920—JOHN UNDERWOOD, <i>guard</i>
EDDIE DYER, <i>halfback</i> |

No recognized all-conference teams were picked prior to 1920. However, the Owls had several stars in the 'teens when football at Rice was just beginning.

Among these early grid greats of Rice were such men as Mick Brown, first Owl player to gain wide acclaim in the Southwest . . . "Tony" Bell, first four-year letterman in the sport, and a fine back . . . Shirley Brick, who came back from World War I in 1919 to captain the team, a player that fans of that era say would have been All-American end if the Southwest had been getting the notice of the press then as now . . . Jim Dain, another fine end and captain of the 1920 team . . . W. M. Standish . . . Graves McGee . . . Tiny Kalb, and many others.



80—Sonny McCurry 81—Jack Taylor 82—Bobby Allen 83—R. J. Schroeder 84—Bill Howton

SONGS

RICE'S HONOR

All for Rice's honor, we will fight on.
 We will be fighting when this day is done;
 And, when the dawn comes breaking,
 We'll be fighting on, Rice,
 For the Gray and Blue. We will be loyal
 To Rice be true.

GRAY BONNET

Put on your old gray bonnet, with the blue ribbon on it,
 And we'll hitch Old Sammy to the fray,
 And we'll rock, rock, rock 'em,
 And we'll sock, sock, sock 'em,
 To the end of Judgment Day.

FIGHT SONG

Fight for Rice; Rice, fight on; Loyal sons, arise!
 The Blue and Gray, of Rice today
 Comes breaking through the skies.
 Stand and cheer! Victory's near!
 Sammy leads the way.
 Onward go, to crush the foe.
 We'll fight for the Blue and Gray.
 Rice . . . Fight . . . never dies.
 Blue . . . Gray . . . in the skies.
 Stand . . . Cheer . . . Rah, Rah, Rah.
 Go . . . Go . . . Yeaaaaa Rice!

YELLS

"THE AXE"

Give 'em the axe,
 Give 'em the axe,
 Give 'em the axe,
 Where?
 Right in the neck,
 Right in the neck,
 Right in the neck,
 There!
 Give the axe, the axe, the axe,
 Where!
 Right in the neck, the neck,
 the neck, there!
 Yea, RICE!

YEA BLUE, YEA GRAY

Yea B-L-U-E-
 Yea G-R-A-Y-
 Yea R-I-C-E
 Hey, Hey, Hey!

WHISPER YELL

(Whisper)
 With an R
 With an R
 With an ICE
 With an O
 With an O
 With a WLS
 Rice Owls Fight!
 Louder: Repeat same Very Loud:
 Repeat same.

LOCOMOTIVE

Sssssssssssssss, Boom!
 R-I-C-E, rah rah (slow)
 R-I-C-E, rah rah (faster)
 R-I-C-E, rah rah (real fast)
 Rice, Owls, Fight!

FIGHT 'EM, OWLS

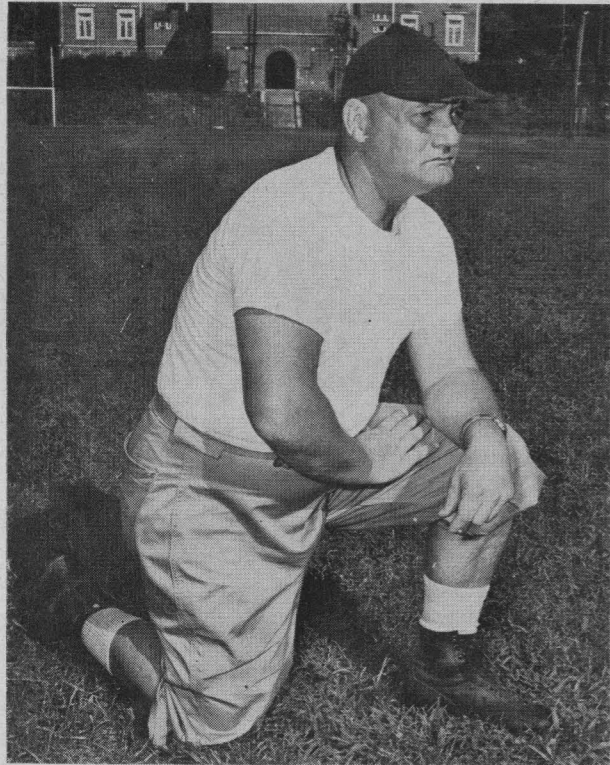
Fight 'em Owls
 Fight 'em Owls
 Fight 'em, fight 'em,
 fight 'em, Owls
 Fight 'em Owls
 Fight 'em Owls
 Fight 'em, fight 'em,
 fight 'em, Owls
 Rice Owls Fight!

DELAYED YELL

Count (to self)
 1, 2, 3, 4, 5, 6, 7, 8—R
 1, 2, 3, 4, 5, 6, 7, 8—I
 1, 2, 3, 4, 5, 6, 7, 8—C
 1, 2, 3, 4, 5, 6, 7, 8—E
 Rice Owls Fight!



Yell Leaders: Earl Bellamy, Teddy Montz, Willie Moreno, T. F. Arner. Drum Majorettes: Sue Levenson, Virginia Easley, Doris Neal, Barbara Sawyer, Sherrill Carmichael.



FRANK HOWARD
Head Coach

COACHING STAFF CLEMSON COLLEGE

Frank Howard begins his twelfth season as Head Coach and Athletic Director at Clemson this year. He graduated from Alabama in 1931 and was a member of the '30 Alabama Rose Bowl team.



l. to r.: Bob Jones, End Coach; Covington McMillan, Offensive Backfield Coach; Frank Howard, Head Coach; Russ Cohen, Defensive Backfield Coach; and Bob Smith, Assistant Coach.

CLEMSON COLLEGE

TIGERS



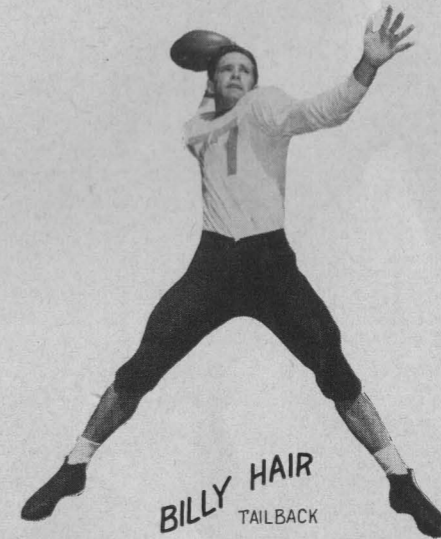
GLENN SMITH
END



PETE COOK
TAILBACK



FRANK GENTRY
END



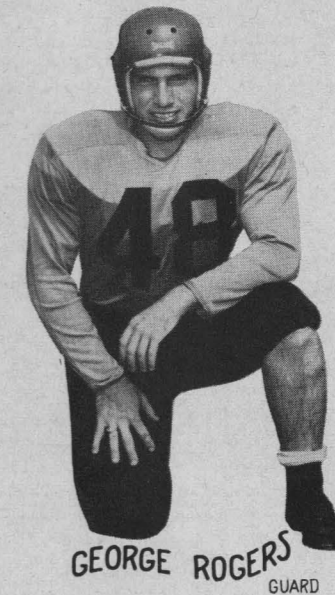
BILLY HAIR
TAILBACK



JIM SHIRLEY
FULLBACK



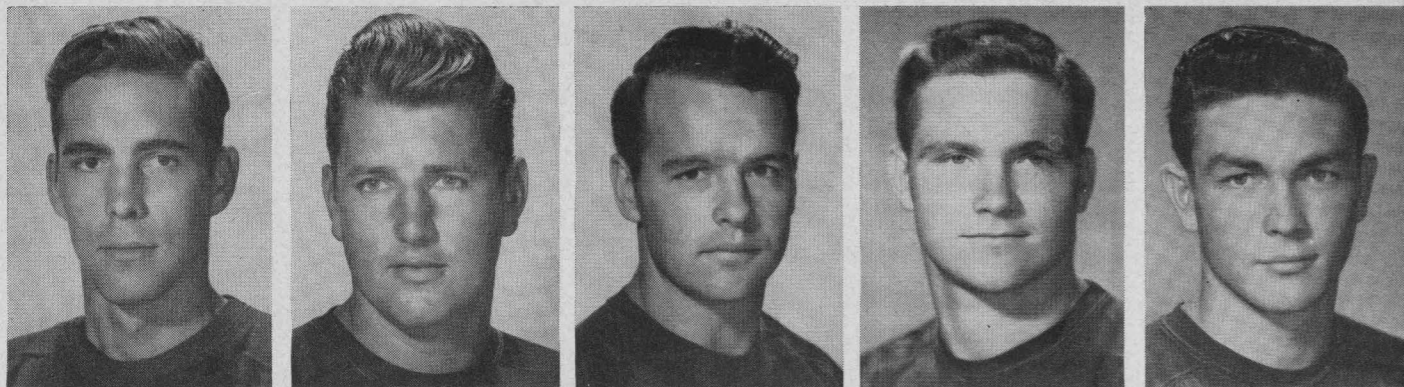
BARCLAY CRAWFORD
GUARD



GEORGE ROGERS
GUARD



FRED KNOEBEL
WINGBACK



85—Al Boughton

86—Bill Wright

87—Hardy Dean

88—Sammy Ward

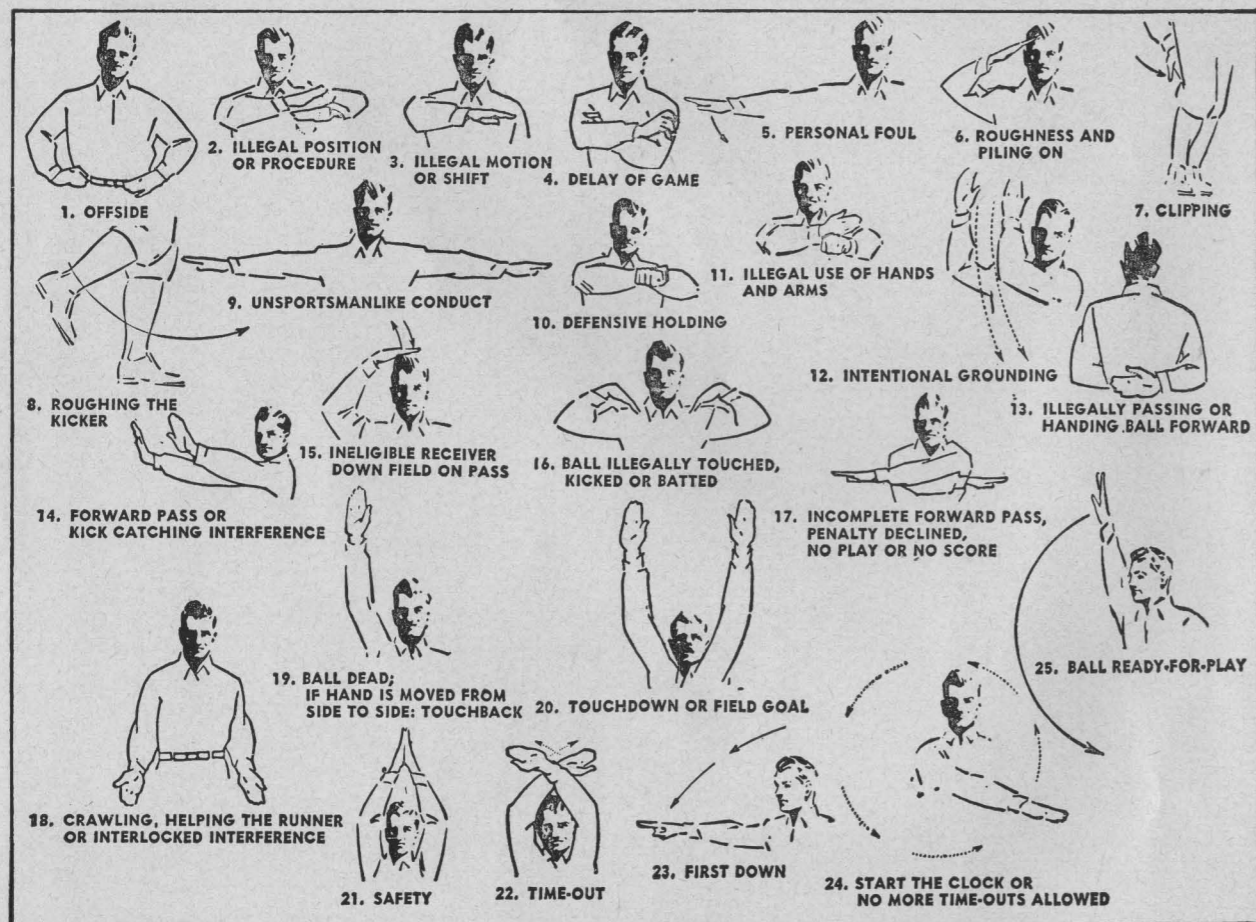
89—Blois Bridges

RICE FRESHMEN FOOTBALL SCHEDULE 1951

Coach—CHARLEY MOORE

Asst.—HAROLD STOCKBRIDGE

5 October (Friday)	T.C.U. freshmen at Houston
12 October (Friday)	Del Mar Jr. College at Houston
19 October (Friday)	S.M.U. freshmen at Dallas
26 October (Friday)	Texas freshmen at Austin
9 November (Friday)	Texas A.&M. freshmen at Houston



Holt's Sporting Goods

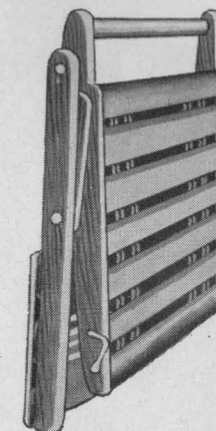
Where Houston Shops for FUN!

Comfort at Every Sporting Event!

**"Take-Along"
BACKREST**



Note the Handle for Easy Carrying! **\$4⁹⁵** Each



The **first** really comfortable BACK REST . . . for boats, stadiums, . . . and a dozen other uses! Made of selected OAK, with soft cushions of smudge-proof painted water-repellent drill. Cadmium plated metal parts with hooks for fastening to boat seat. "Take-Along" BACK REST was designed to bring comfort at a price everyone can afford! Buy yours NOW for this season's big games!

ORDER BY MAIL—get yours in time for week-end football games, for your next fishing or boating trip!



HOLT'S SPORTING GOODS
Fannin at Lamar, Houston 2, Texas
Please send me () "Take-Along"
BACK REST at \$4.95 each.

NAME _____

ADDRESS _____

CITY _____ STATE _____

CASH CHARGE C.O.D.

America's most popular cigarette



FLAVOR

MILDNESS

