



Rice vs. Arkansas

RICE CAMPUS ★ NOVEMBER 10

OFFICIAL PROGRAM 25c

**Be Happy -
Go Lucky!**

EILEEN WILSON, Lucky Star of TV and Radio, says:
**At football games I love to cheer
 "Go team!" and "Hip Hooray!"
 But for a better taste I shout,
 "Go Lucky Strike today!"**
(Luckies taste better than any other cigarette!)



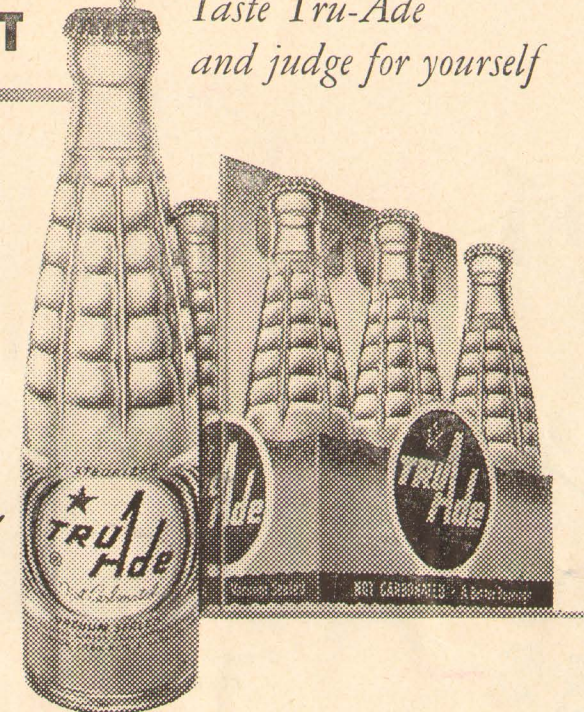
**LUCKIES TASTE BETTER
 THAN ANY OTHER CIGARETTE!**

**L.S./M.F.T.-
 Lucky Strike Means Fine Tobacco**

COPR., THE AMERICAN TOBACCO COMPANY

**ONLY ONE*
 CAN BE
 BEST**

**Taste Tru-Ade
 and judge for yourself*



**THE
 Natural
 SOFT DRINK**

SOUTH TEXAS NATIONAL BANK

Progressive Banking Service Since 1886

213 MAIN STREET • HOUSTON, TEXAS
 MEMBER FEDERAL DEPOSIT INSURANCE CORPORATION



NOW IN ITS FIFTH YEAR OF OPERATION



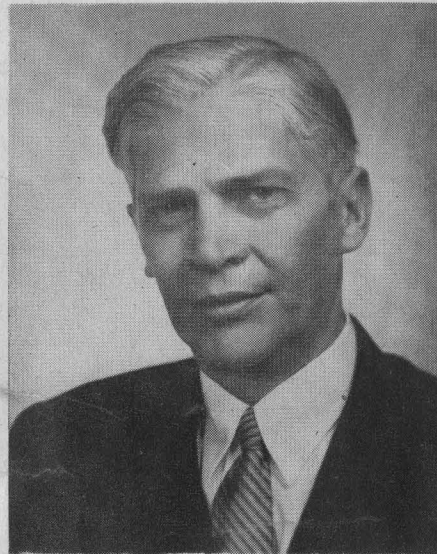
TRANS-TEXAS
 Airways

BOARD OF GOVERNORS OF THE RICE INSTITUTE

TRUSTEES



Gus S. Wortham



George R. Brown
Chairman



Lamar Fleming, Jr.



William A. Kirkland



J. Newton Rayzor



Dr. Frederick R. Lummis



John S. Ivy

TERM MEMBERS

Herbert Allen
Robert P. Doherty

Francis T. Fendley
Walter L. Goldston
H. Malcolm Lovett

Robert H. Ray
Harmon Whittington



DR. WILLIAM V. HOUSTON
President, The Rice Institute

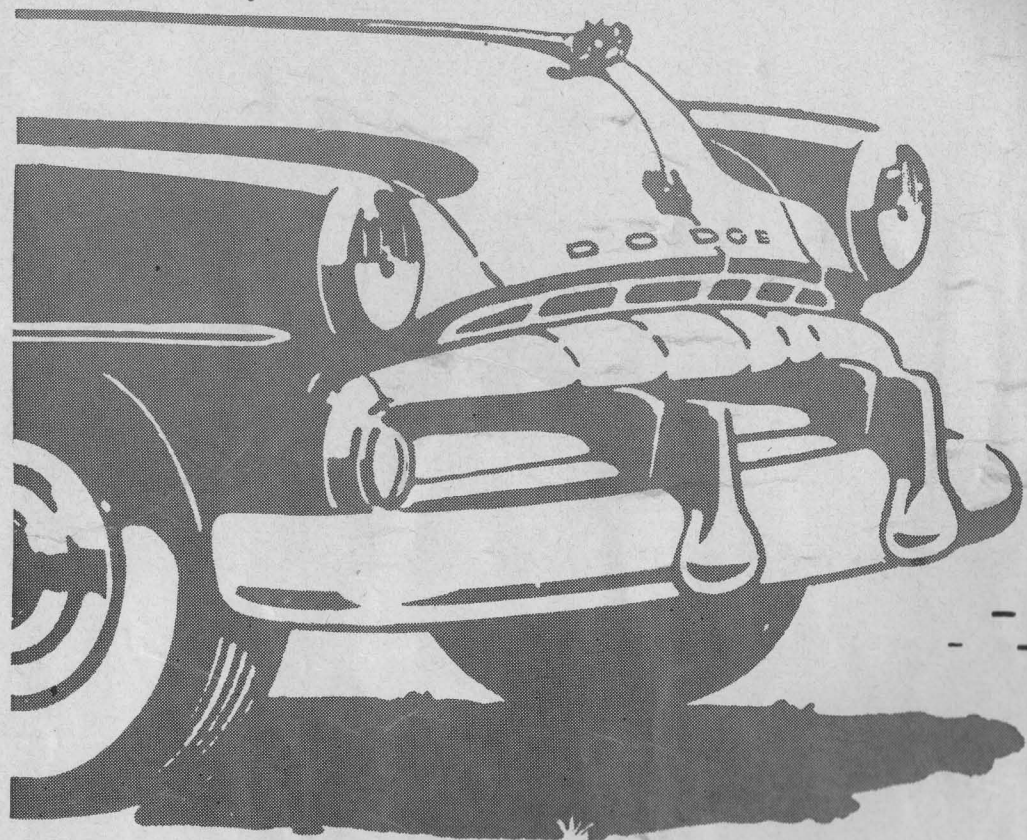
The Rice Institute is pleased to welcome you, as its guests, to this stadium. We are especially proud of it, not only of the structure itself, but of the generous and enthusiastic way in which it was provided by so many citizens of Houston.

Those of you who have not had a previous opportunity are invited to spend a little time looking around the rest of our campus. You may be especially interested in some of the newer buildings such as the Fondren Library, the Abercrombie Engineering Laboratory, and the Gymnasium.

We hope you may enjoy the game you have come to see, and we know that whatever may be the score both of the competing teams will be worthy representatives of their respective institutions.

WILLIAM V. HOUSTON

For the thrill of the season
that lasts for years . . .



Drive a New Dodge
from
JACKSON MOTORS, Ltd.

2404 South Main • Houston

Jackson's Expert Repair Service

Helps You Keep Your Car in Top Shape



Growing
with
Houston

CAMERON IRON WORKS, INC.

KATY AT SILVER ROAD
HOUSTON

Oil Well Specialties

TONIGHT'S GAME

Rice Institute's young battlers get an acid test tonight when they go against a powerful and dangerous foe in the Razorbacks of the University of Arkansas.

This is the first of four consecutive Southwest Conference games for the Owls who are still in the running for the title if they can sweep these four games, and would still have the possibility of sharing the crown even with one more loss.

Arkansas may well be the toughest of the four games to come. Although beaten twice in conference competition early in the campaign by T.C.U. and Baylor, the husky Porkers have since humbled the Texas Longhorns and the Texas Aggies. Coach Otis Douglas' giants were very impressive in whipping A. & M. last weekend in Fayetteville, 33-21. And they bear in mind, like Rice, that even two losses does not knock a team out of a chance to share the crown in this topsy turvy league, so the will to win will be strong for the Razorbacks.

Jess Neely's Owls face several problems in trying to cope with the Porkers from the Ozarks. One of the

largest teams in the nation with a defensive line averaging close to 220 pounds, Arkansas presents a hefty defense headed by husky Bob Griffin, number 54. The Arkansas defense is fashioned after the one used by the professional Philadelphia Eagles, and is a different style than that usually seen by grid fans in Houston.

On offense, Arkansas is slated to strike with the split T attack, built around the all-around passing and running ability of Lamar McHan, the Razorbacks' sophomore quarterback.

Rice's hopes depend a good deal on a soph quarterback, too. Dan Drake has been a standout in Rice's victories over Navy, S.M.U., and Pittsburgh in games to date. The running of little Teddy Riggs at halfback has helped a lot in the Owls' offensive punch.

This game marks the first time the Razorbacks have ever played the Owls at nighttime in Houston, and marks the first appearance of the Arkansas team in the big Rice Stadium.

THREE STALWART RICE INSTITUTE TACKLES



Glenn Walls

John Hudson

Bill Crockett

The three rugged young men pictured above, along with 6' 5" and 215 pound soph Richard Chapman provide the Rice Owls with perhaps the best set of tackles of any team in the Southwest Conference. Walls, a senior and tri-captain, and Crockett, a junior, play primarily on offense, though Crockett occasionally gets a defensive assignment. Chapman and Hudson have won regular positions on defense as tackles in their sophomore year.

Touchdown OWLS!



MODEL 17T2

For your favorite sport on TV...

See



**BLACK-DAYLITE
TELEVISION**

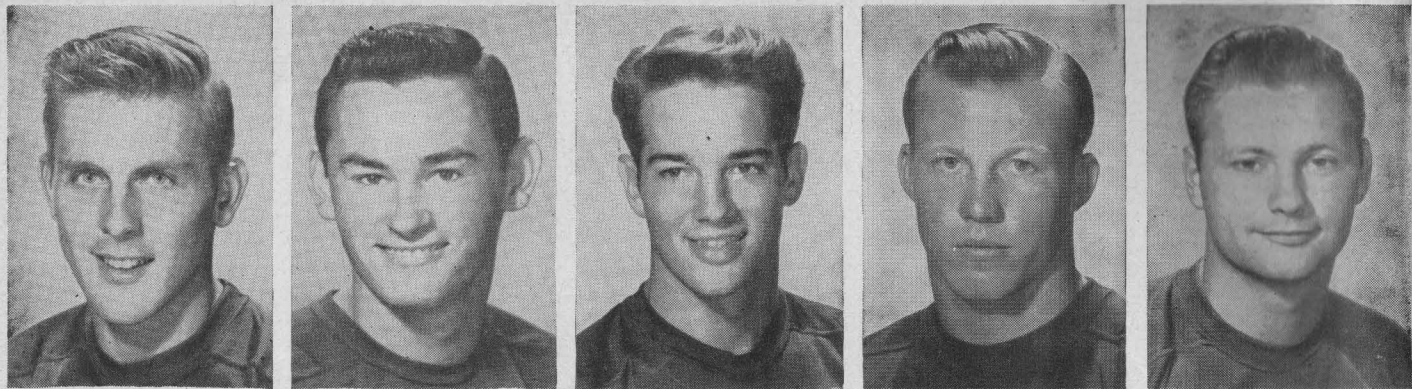
All year round, your favorite sport is at your fingertips, clearly and sharply, with a new G-E Black-Daylite Television receiver. Thrill to the big-as-life, close-up, steady picture in a beautiful cabinet. You'll be delighted with any of the smart up-to-date models your G-E dealer is now showing. Ask for a home demonstration. Before you buy TV, see G-E.

Distributed By:

GENERAL ELECTRIC SUPPLY CORPORATION

Houston • Beaumont • Corpus Christi • San Antonio

Listen to the G-E Football Roundup with Red Barber every Saturday over Station KNUZ



10—Sammie Burk 11—Horton Nesrsta 12—Bill Burkhalter 15—Dickie Bob Haddox 16—Bobby Warren

NAME BRAND
Sporting Goods

OPEN DAILY 9 A.M.-6 P.M.

AT REDUCED PRICES

Houston Sports Shop

4717 Main Street, Houston • Telephone KE-8660, JU-2131

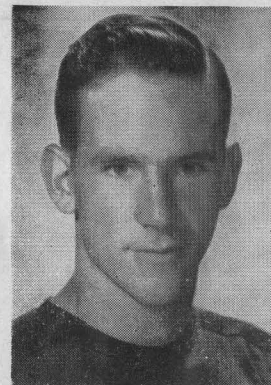
We are Proud . . .

Of our many young depositors who are starting now to acquire the independence of a savings account—the satisfaction of planned financing.

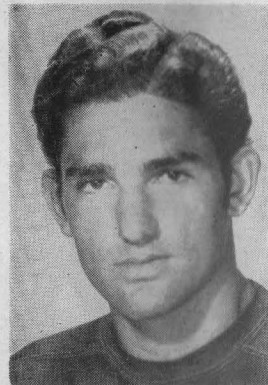
For over 30 years it has been our policy to extend to our customers a friendly understanding of their financial responsibilities. We invite you to drop by 712 Main to talk with us about our Free Services, Savings Plans, Loan Plans, Trust Facilities and Normal Charge Services.

Member Federal Deposit Insurance Corporation

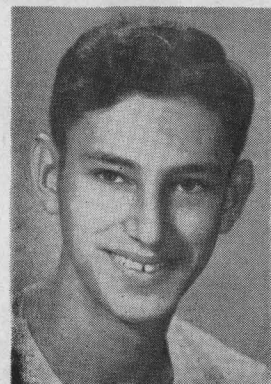
National Bank of Commerce
 OF HOUSTON
 "The Bank of Courtesy"



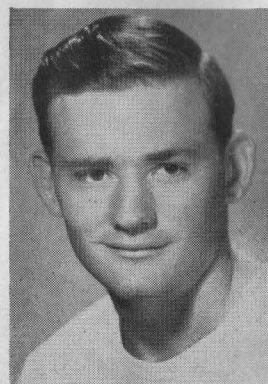
91—Billy Fisk



90—George Pontikes



Louis Loeser, Asst. Trainer



Weldon Price, Manager



For the
All-American Week-End



Make The Shamrock your headquarters hotel — where gracious hospitality and a warm welcome await you. You'll enjoy the comfort, the faultless service, the superb cuisine, the luxurious facilities that only The Shamrock affords its guests.

Cavalcade of Stars

There's always exciting big-name entertainment in The Shamrock's famed Emerald Room . . . stars of stage, radio and motion pictures appear continually, in person, in the Cavalcade of Stars. You'll enjoy your "night out" in The Shamrock's supper clubs.

GLENN McCARTHY, President

M. JACK FERRELL, Executive Manager

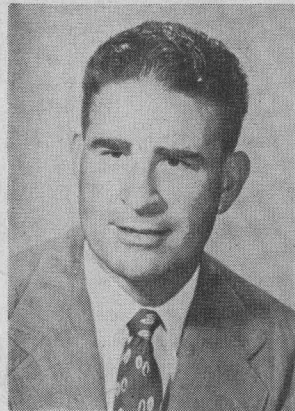
THE RICE INSTITUTE ATHLETIC COACHING STAFF



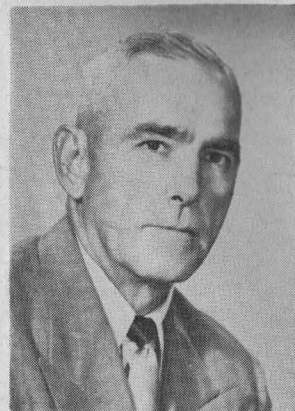
Joe Davis
Line Coach



Cecil Grigg
Backfield Coach



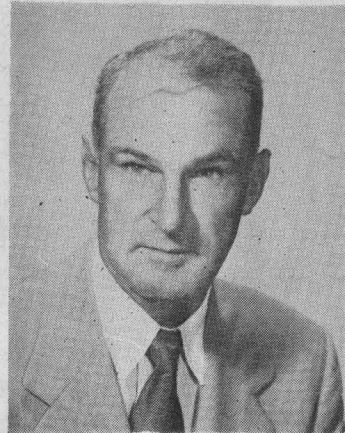
A. M. Bale
End Coach



Dell Morgan
Asst. Coach



Emmett Brunson
Track Coach
Bus. Mgr. of Athletics



Jess Neely
Athletic Director
Head Football Coach



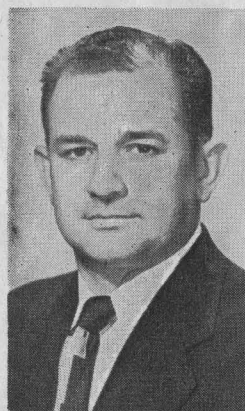
Charles Moore
Freshman Football Coach



Harold Stockbridge
Baseball Coach
Asst. Football Coach



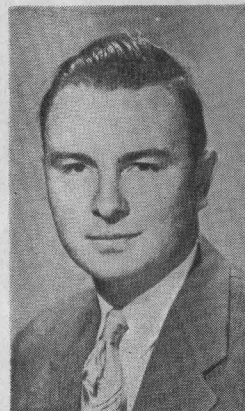
Don Suman
Basketball Coach



Eddie Wojceki
Head Trainer



Carroll Martin
Office Manager



Bill Whitmore
Sports News Director

OFFICIAL WATCH FOR THIS GAME

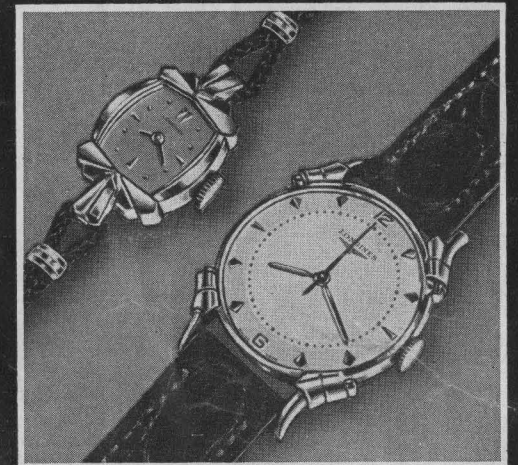


Longines



The World's Most Honored Watch

ACCEPTED AS OFFICIAL WATCH
FOR TIMING
CHAMPIONSHIP SPORTS EVENTS
IN ALL FIELDS ALL OVER THE WORLD



*Product of
Longines-Wittnauer Watch Company*

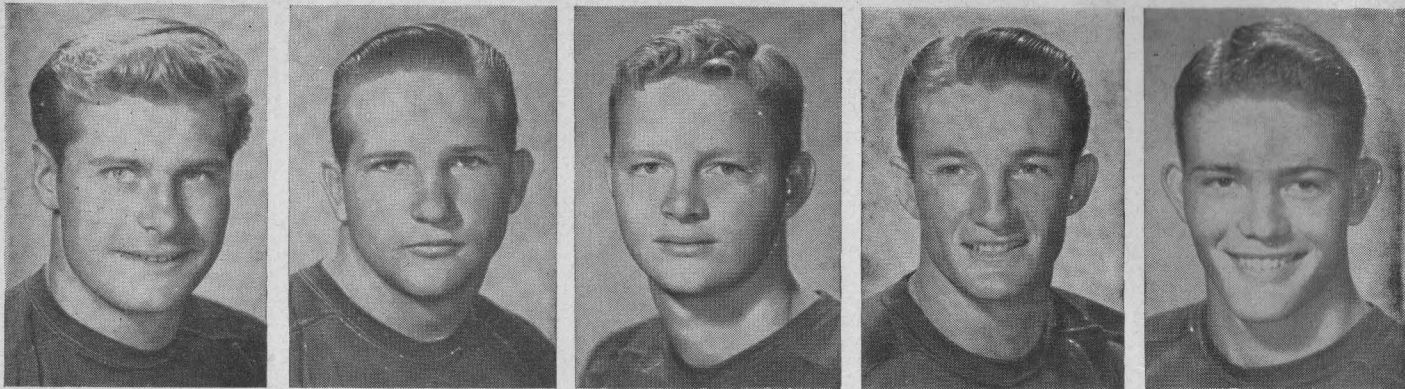
UNIVERSAL PACKING & GASKET CO.

Houston Owned
and Operated



Home of Universal, where packings and gaskets are manufactured
for every industrial need.

The Rice Athletic Association Would Appreciate You Patronizing Our Advertisers



19—Bob Garbrecht 20—Bobby Leggett 21—Denny Marsters 22—Gene Silver 23—James Heflin



GO TO THE GAMES with **HUMBLE**

The Humble station in your neighborhood is football headquarters. It has full details of Southwest Conference football schedules, road maps and other information.

Stop there before you start this year's football trips so that your car will perform better, look better, as you drive to the games:

Have your car washed and lubricated; change the oil to Esso Extra (best you can buy!);

let the driveway salesman check your battery, your radiator, your fan-belt, your tires; and fill up with Esso Extra gasoline for extra performance on every mile you travel.

Then . . . on your way . . . stop for service under the Humble sign. Humble rest rooms are extra clean, Humble service is friendly, courteous and prompt . . . Again this year, go to the games with Humble!

HUMBLE OIL & REFINING CO.



KERN TIPS
Houston



CHARLIE JORDAN
Dallas



BILL MICHAELS
San Antonio



VES BOX
Dallas

Tune in Humble's broadcasts of the Southwest Conference games you just can't see. This quartet of top-notch sportscasters will be on the air each weekend. This is another extra service under the Humble sign!

See Humble's FOOTBALL FILMS on TV—Sundays

QUINBY EMPLOYMENT SERVICE

"A Name Worth Remembering"

You can benefit from our many years experience in the personnel field

Executive, Office, Sales, and Technical Personnel

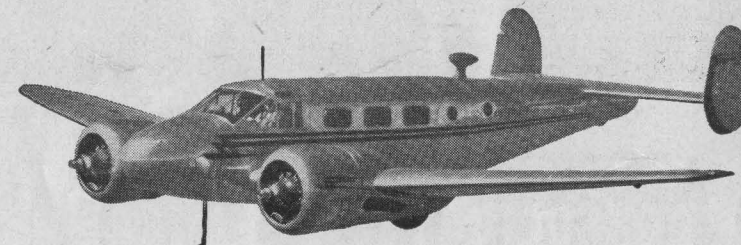
Member National Employment Board, Chamber of Commerce and Employment Counselors

409 Bankers Mortgage Bldg.

Houston 2, Texas



Beechcraft in the air



and REED on the ground



Beechcraft is a great name in the air. The Beech Executive Transport and Bonanza models are the World's finest airplanes designed specifically to meet the requirements of leading executives who appreciate the importance of air travel in modern industry.

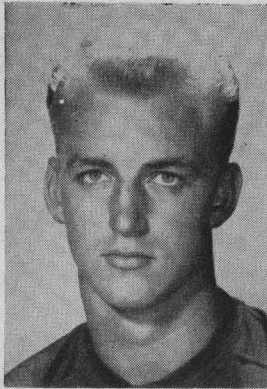
On the ground the name Reed means more efficient, economical and pleasant hours in the air for you. The J. D. Reed Company has built a superior sales and service organization to serve those who accept only the best. Twenty years of such service has placed Reed far ahead in facilities and technical know-how.

If you are in the market for a new aircraft or in need of service on your present one, you will find the J. D. Reed Company a good place to do business

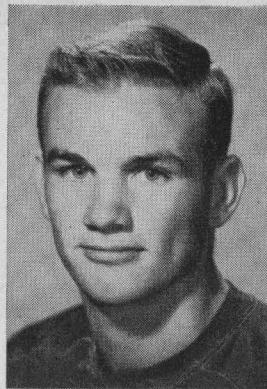
J.D. REED CO. Inc.
SALES SERVICE
Beechcraft
DISTRIBUTOR



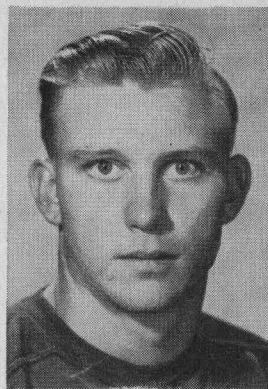
MUNICIPAL AIRPORT
HOUSTON, TEXAS



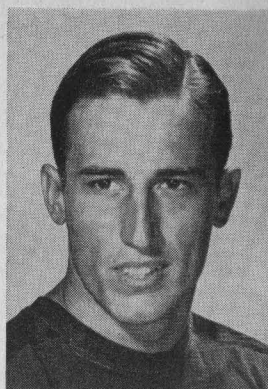
24—Dan Drake



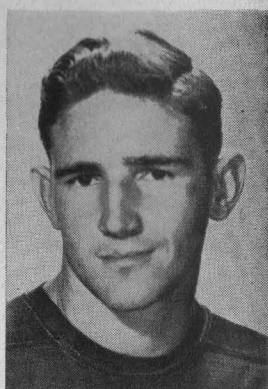
25—Buddy Grantham



26—Leroy Fenstermaker



31—Teddy Riggs



35—Bill Frazier

CONSOLIDATED CHEMICAL INDUSTRIES INC.

Heavy Chemicals for Industry

640 MELLIE ESPERSON BLDG.
HOUSTON 2, TEXAS

ERNEST COKER'S

The Old College Inn

FAMOUS FOR THIRTY YEARS FOR THE FINEST
STEAKS AND BIG BAKED POTATOES

CLOSED TUESDAYS

6545 SOUTH MAIN STREET — LY 6484

Touchdown!

You are the quarterback . . . you plot your own financial objective . . . today, tomorrow and beyond. You call the touchdowns, when and how you want them, when you put life insurance on your team. If your strategy calls for an adequate retirement income . . . for a college education for the children . . . for cash and monthly income for the family, life insurance has exactly the "play" needed for your offensive. Ask your Great Southerner to chart these "plays" for you.

GREAT SOUTHERN

Life

INSURANCE COMPANY

HOME OFFICE

HOUSTON, TEXAS

The Rice Athletic Association Would Appreciate You Patronizing Our Advertisers

Good Luck Owls!

W. D. HADEN CO.

CAMERON IRON WORKS

ED LOREHN

MISSION MANUFACTURING CO.

T. CAMPBELL

W. L. GOLDSTON

W. J. GOLDSTON

JOHNSTON OIL FIELD SERVICE CORP.

BILL TAYLOR

FLOYD KARSTEN

SEISMIC EXPLORATIONS, INC.

F. F. REYNOLDS

DOW CHEMICAL CO.

CHAS. F. REED

FALCON SEABOARD DRILLING CO.

McCULLOUGH TOOL CO.

O. J. McCULLOUGH

HOUSTON UNDERWRITERS' AGENCY

A. W. LARKIN

WALLACE WILSON

TRANS TEXAS AIRWAYS

EARL McKAUGHAN

GERALD MORA, CONTRACTOR

GAYLORD JOHNSON

FOSTER SCHEMPF

H. F. ROSENBUSH

H. C. COCKBURN

NATIONAL TANK CO.

FLOYD SENTER

GULF TRACTOR & EQUIPMENT CO.

GEORGE MARTIN

LANSON DITTO

W. STEWART BOYLE

LYNN B. HAMILTON

DICK SCHWAB

JACK FRAZIER

J. A. NEATH

ROBERT E. MOORE

W. S. BAILEY

TRIANGLE REFINERIES, INC.

J. B. SAUNDERS

KING CONSTRUCTION CO.

C. E. KING

LOUIS PULASKI

PRODUCTION SERVICE CORP.

J. F. CORLEY

GROVER GEISELMAN

JOHN COFFEE

DAN MOODY

ALVIN MOODY

C. W. HANKS

HOWARD TELLEPSEN

TRINITY RIVER LUMBER CO.

HOUSTON SHELL & CONCRETE CO.

TOMMY HUDGENS

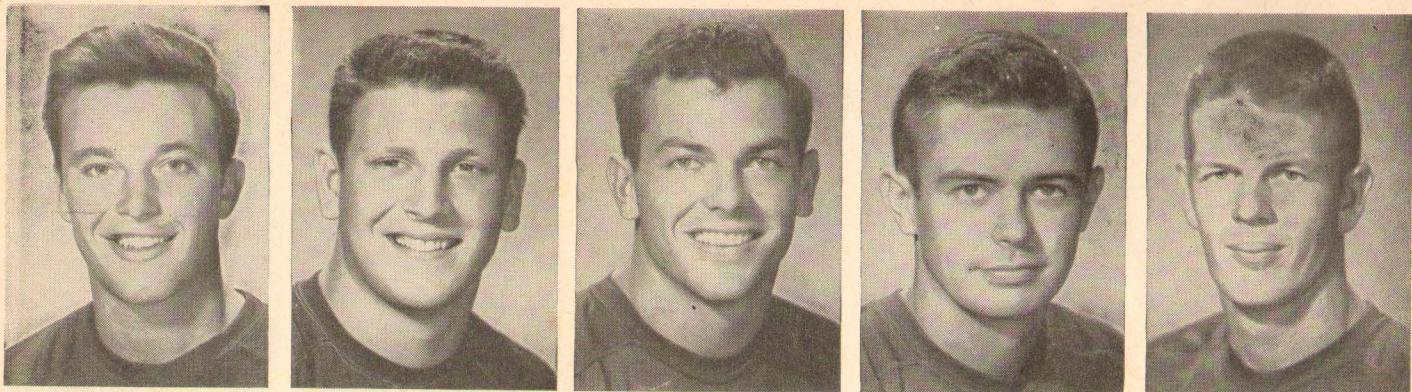
M. C. DAVIDSON

W. CECIL SISSON

BLACK BROLLIER INC.

COOPER & MATTHEWS LUMBER CO.

E. D. ADAMS



36—Billy Ed Daniels 42—Don Whittaker 43—Carl Johnson 44—Herb Eubanks 45—David "Kosse" Johnson

Guy Francis

RESTAURANT

ON YOUR WAY TO THE STADIUM

SEA FOODS — STEAK — CHICKEN

3801 Farnham St.

(Located Between Shepherd and Greenbriar—1 Block South Richmond)



My Friends and I agree
It's Really Dry and
Bitter-free! says Molly
Timbrook of Houston.

THE EXTRA POINT THAT MAKES THE DIFFERENCE —PILSENIZED—

Join the "Select" group today!

After the game tonight, enjoy a big glass of today's Southern Select beer. It's *really* dry and light—really bitter-free and satisfying.

New Pilsenized Southern Select gives you greater beer-drinking pleasure all evening long! Try it—tonight!

Galveston-Houston Breweries,
Inc.
Galveston, Texas

Southern Select BEER

DRINK
Coca-Cola
add Zest

RICE (OFFENSIVE)
BY POSITIONS

LE Howton 84	LT Walls 73	LG Little 61	C Day 50	RG Wagner 66	RT Crockett 71	RE McCurry 80
QB Drake 24						
LHB Riggs 31			RHB Burkhalter 12			
FB D. Johnson 45						

★

ARKANSAS (DEFENSIVE)
BY POSITION

LE Summerall 88	LT Griffin 54	MOC Williams 75	RT Hanner 71	RE Fischel 85
OB Sagely 32	IB Carpenter 34	IB Smith 51	OB Sutton 41	
LHB Pryor 44			RHB Cole 40	

OFFICIALS

Referee: Ray McCulloch; Umpire: Jimmie Higgins; Head Linesman: Lon Evans;
Field Judge: Johnny Morrow; Electric Clock Operator: Lamar Camp.

See line-ups on page 20 for Arkansas offense and Rice defense.

RICE INSTITUTE
SQUAD

10	Sammie Burk '53	B	19	5-11	170
11	Horton Nesrsta '54	B	20	5-9	149
12	Bill Burkhalter '52	B	21	5-10	175
15	Dickie B. Haddox '53	B	19	5-9	160
16	Bobby Warren '54	B	19	5-7	150
19	Bob Garbrecht '54	B	19	6-1	190
20	Bobby Leggett '54	B	18	6-0	170
21	Denny Marsters '54	B	19	6-2	175
22	Gene Silver '52	B	22	5-10	160
23	James Heflin '54	B	20	6-2	195
24	Dan Drake '54	B	20	6-1	188
25	Buddy Grantham '54	B	18	6-2	180
26	LeroyFenstermaker '54	B	19	6-2	190
31	Teddy Riggs '52	B	21	5-10	172
35	Bill Frazier '53	B	20	5-10	165
36	Billy Ed Daniels '53	B	20	6-0	175
42	Don Whittaker '54	B	18	6-1	187
43	Carl Johnson '54	B	18	5-11	177
44	Herb Eubanks '53	B	20	5-9	150
45	"Kosse" Johnson '54	B	19	6-0	180
46	James Spencer '54	B	19	5-11	180
49	Gino Biasatti '54	B	19	5-10	184
50	Jack Day '53	C	21	6-0	200
54	Don Rhoden '53	C	18	5-11	195
55	Leo Rucka '54	C	20	6-3	204
56	Bobby Moore '53	C	21	6-1	210
59	A. J. Loth '54	C	20	6-1	220
60	Simon Verret '52	G	22	5-9	190
61	Gene Little '53	G	22	6-1	205
62	LaMar Lee '54	G	19	5-11	195
64	Walter Schleyer '54	G	19	5-11	190
65	Dan Hart '54	G	19	5-10	190
66	"Hans" Wagner '53	G	20	6-1	198
67	W. C. Treadway '54	G	21	6-1	201
68	John Boswell '54	G	20	6-0	200
69	James Timmons '53	G	21	6-2	210
70	John Hudson '54	T	18	6-0	210
71	Bill Crockett '53	T	19	6-2	203
72	Max Schuebel '54	T	19	6-1	195
73	Glenn Walls '52	T	22	6-3	210
74	Hugh Wilson '54	T	20	6-0	215
75	Ted Watson '53	T	21	6-3	202
76	Kenneth Lewis '54	T	19	6-3	212
77	Dan Winship '54	T	19	6-0	215
78	Richard Chapman '54	T	18	6-5	214
79	Buddy Edwards '54	T	20	6-2	230
80	Sonny McCurry '52	E	21	6-4	185
81	Jack Taylor '54	T	21	6-1	193
82	Bobby Allen '53	E	20	6-2	172
83	R. J. Schroeder '54	E	18	6-4	190
84	Bill Howton '52	E	21	6-2	180
85	Al Boughton '52	E	21	6-5	200
86	Bill Wright '52	E	21	6-1	212
87	Hardy Dean '53	E	21	6-1	180
88	Sammy Ward '54	E	19	6-0	190
89	Blois Bridges '54	E	19	6-1	178
90	George Pontikes '53	E	20	6-1	190
91	Billy Fisk '54	E	20	6-0	170

UNIVERSITY OF
ARKANSAS SQUAD

10	Rinehart '52	B	21	5-11	175
11	McHan '54	B	18	6-1	190
13	Troillett '54	B	20	6-0	165
17	Hogue '53	B	19	5-11	185
21	Nix '54	B	19	6-0	170
22	Britt '53	B	19	5-8	155
23	Long '54	B	19	5-10	165
24	McFarland	B	21	6-0	175
25	Reginelli '54	B	19	5-11	165
26	Thomason '53	B	21	5-11	170
29	Reeves '53	B	22	5-10	175
32	Sagely '54	B	19	6-0	185
34	Carpenter '53	B	19	6-1	195
35	Sharp '54	B	22	5-10	185
36	Warren, B. '54	B	19	6-1	195
40	Cole '53	B	20	6-2	170
41	Sutton '53	B	20	6-1	190
42	Dugan '53	B	21	6-0	180
43	Troxell '54	B	18	5-11	170
44	Pryor '53	B	20	5-11	185
46	Phillips '52	B	22	5-10	170
47	Elton '53	B	21	6-0	175
49	Hallum '54	B	19	6-0	180
51	Smith, J. '52	C	20	5-11	200
52	Ramsey '54	C	19	6-1	200
53	Watkins '54	C	19	6-2	195
54	Griffin '52	C	22	6-3	230
60	Lashley '54	G	19	5-11	190
61	Linebarrier '53	G	19	6-2	200
62	Spain '54	G	20	6-0	200
65	Marshall '52	G	21	5-9	185
66	Dumas '54	G	19	6-2	200
67	Roth '54	G	18	6-0	190
69	Warren, E. '54	G	19	5-11	190
70	Faulkinberry '54	T	20	6-3	230
71	Hanner '52 (C)	T	21	6-3	235
72	Garlington '54	T	19	6-2	220
73	Jones '53	T	19	6-3	205
74	Leohner '54	T	19	6-3	230
75	Williams '52	G	21	6-4	190
76	Stringer '53	T	20	6-6	225
77	Smith, D. '53	T	19	6-4	220
78	Graves '54	T	19	6-4	235
79	Sperring '54	G	27	6-2	230
80	Huffines '54	E	20	6-1	180
81	Perry '54	E	18	6-4	205
82	Jurney '52	E	20	6-1	190
84	Bogard '54	E	19	6-2	180
85	Fischel '52	E	24	6-2	200
86	Forrester '54	E	19	6-0	185
87	Pickens '54	E	19	6-0	180
88	Summerall '52 (C)	E	21	6-3	215

SCIENCE
DISCOVERED IT
YOU CAN
PROVE IT-

"NO UNPLEASANT
AFTER-TASTE"

WHEN YOU SMOKE

CHESTERFIELD

MORE COLLEGE MEN AND WOMEN BUY
CHESTERFIELD THAN ANY OTHER CIGARETTE

DRINK

Coca-Cola

add Zest



ARKANSAS (OFFENSIVE)

BY POSITION

LE	LT	LG	C	RG	RT	RE
Jurney	Garlington	Williams	Griffin	Dumas	Hanner	Summerall
82	72	75	54	66	71	88

QB

Rinehart
10

LHB

Pryor
44

FB

Carpenter
34

RHB

Sutton
41



RICE (DEFENSIVE)

BY POSITIONS

LE	LT	LG	C	RG	RT	RE
Fisk	Chapman	Crockett	Treadway	Rucka	Hudson	McCurry
91	78	71	67	55	70	80

LB

Rhoden
54

LH

Silver
22

RH

Burkhalter
12

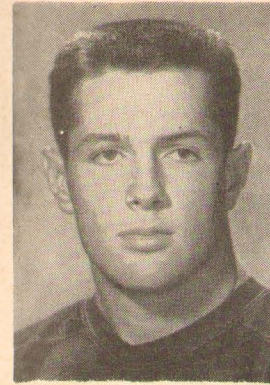
S

Nesrsta
11

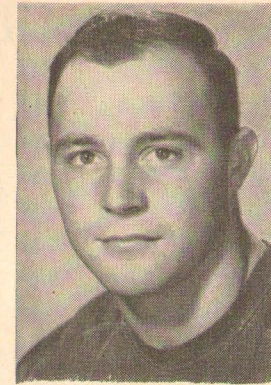
OFFICIALS

Referee: Ray McCulloch; Umpire: Jimmie Higgins; Head Linesman: Lon Evans;
Field Judge: Johnny Morrow; Electric Clock Operator: Lamar Camp.

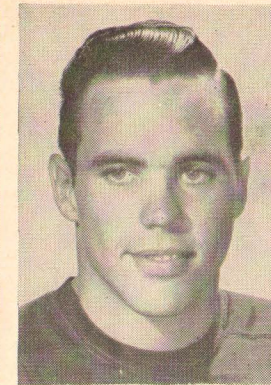
See line-ups on page 17 for Arkansas defense and Rice offense.



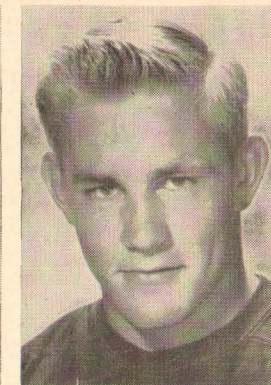
46—James Spencer



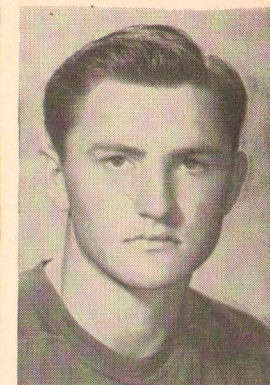
49—Gino Biasatti



50—Jack Day



54—Don Rhoden



55—Leo Rucka



220 Main Street

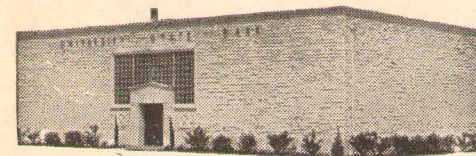
"THE BANK OF CORDIALITY"

Member Federal Deposit Insurance Corporation

"It takes good teamwork to play championship football and to build buildings."

— CONGRATULATIONS —

W. S. Bellows Construction Corp.



COMPLETE METROPOLITAN SERVICE

WITH RESIDENTIAL CONVENIENCE



Serving Southwest Houston

West University Place, Southside Place and Bellaire

AUTOMOBILE TELLER SERVICE

UNIVERSITY STATE BANK

Keystone 5574

6135 KIRBY DRIVE at AMHERST

MEMBER FEDERAL DEPOSIT INSURANCE CORPORATION

FIRST STATE BANK

BELLAIRE, TEXAS

MOhawk 3413

5123 BELLAIRE BOULEVARD

1951 RICE OWLS' FOOTBALL ROSTER

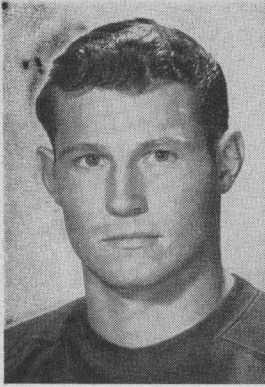
NUMERICAL ORDER

No.	Name	Pos.	Wt.	Ht.	Age	Class	Exp.	Home Town
10	Sammie Burk	HB	170	5' 11"	19	Jr.	1 VL	Luling
11	Horton Nesrsta	HB	149	5' 9"	20	Soph.	1 Sq.	San Antonio
12	Bill Burkhalter, Tri-Capt.	HB	175	5' 10"	21	Sr.	2 VL	Bandera
15	Dickie Bob Haddox	HB	160	5' 9"	19	Jr.	1 VL	Navasota
16	Bobby Warren	HB	150	5' 7"	19	Soph.	Frosh	Austin
19	Bob Garbrecht	FB	190	6' 1"	19	Soph.	Frosh	New York City
20	Bobby Leggett	QB	170	6' 0"	18	Soph.	Frosh	Harlingen
21	Denny Marsters	FB	175	6' 2"	19	Soph.	Frosh	Kingsville
22	Gene Silver	HB	160	5' 10"	22	Sr.	1 VL	Harlingen
23	James Heflin	HB	195	6' 2"	20	Soph.	Frosh	Mart
24	Dan Drake	QB	188	6' 1"	20	Soph.	1 Sq.	Fort Worth
25	Buddy Grantham	QB	180	6' 2"	18	Soph.	Frosh	Grand Prairie
26	Leroy Fenstemaker	QB	190	6' 2"	19	Soph.	Frosh	Llano
31	Teddy Riggs	HB	172	5' 10"	21	Sr.	1 VL	Pearsall
35	Bill Frazier	FB	165	5' 10"	20	Jr.	1 Sq.	Pasadena
36	Billy Ed Daniels	HB	175	6' 0"	20	Jr.	1 Sq.	Kerrville
42	Don Whittaker	FB	187	6' 1"	18	Soph.	Frosh	Dallas
43	Carl Johnson	HB	177	5' 11"	18	Soph.	Frosh	Houston
44	Herb Eubanks	HB	150	5' 9"	20	Jr.	Tsfr.	Houston
45	David "Kosse" Johnson	FB	180	6' 0"	19	Soph.	Frosh	Baytown
46	James Spencer	HB	180	5' 11"	19	Soph.	Frosh	Conroe
49	Gino Biasatti	FB	184	5' 10"	19	Soph.	Frosh	Dallas
50	Jack Day	C	200	6' 0"	21	Sr.	1 VL	Galena Park
54	Don Rhoden	C	195	5' 11"	18	Jr.	1 VL	Kerrville
55	Leo Rucka	C	204	6' 3"	20	Soph.	Frosh	Crosby
56	Bobby Moore	C	210	6' 1"	21	Jr.	1 VL	Amarillo
59	A. J. Loth	C	220	6' 1"	20	Soph.	1 Sq.	Fredericksburg
60	Simon Verret	LG	190	5' 9"	22	Sr.	1 VL	Port Arthur
61	Gene Little	LG	205	6' 1"	22	Jr.	1 VL	Corpus Christi
62	LaMar Lee	RG	195	5' 11"	19	Soph.	Frosh	Porest Lake, Minn.
64	Walter Schleyer	LG	190	5' 11"	19	Soph.	Frosh	San Angelo
65	Dan Hart	RG	190	5' 10"	19	Soph.	Frosh	Houston
66	Dan "Hans" Wagner	RG	198	6' 1"	20	Jr.	1 Sq.	Schulenburg
67	W. C. Treadway	LG	201	6' 1"	21	Soph.	Frosh	Houston
68	John Boswell	RG	200	6' 0"	20	Soph.	1 Sq.	Nocona
69	James Timmons	RG	210	6' 2"	21	Jr.	1 Sq.	Sweetwater
70	John Hudson	LT	210	6' 0"	18	Soph.	Frosh	Center
71	Bill Crockett	RT	203	6' 2"	19	Jr.	1 VL	Bonham
72	Max Schuebel	RT	195	6' 1"	19	Soph.	Frosh	Houston
73	Glenn Walls, Tri-Capt.	LT	210	6' 3"	22	Sr.	2 VL	Dallas
74	Hugh Wilson	RT	215	6' 0"	20	Soph.	Frosh	Port Arthur
75	Ted Watson	RT	202	6' 3"	21	Jr.	1 VL	Corpus Christi
76	Kenneth Lewis	LT	212	6' 3"	19	Soph.	Frosh	Conroe
77	Dan Winship	LT	215	6' 0"	19	Soph.	Frosh	Houston
78	Richard Chapman	RT	214	6' 5"	18	Soph.	Frosh	Waxahachie
79	Buddy Edwards	LT	230	6' 2"	20	Sopt.	1 Sq.	Texarkana, Ark.
80	Sonny McCurry	RE	185	6' 4"	21	Sr.	2-VL	Wharton
81	Jack Taylor	LT	193	6' 1"	21	Soph.	Frosh	Baytown
82	Bobby Allen	RE	172	6' 2"	20	Jr.	1 VL	Sonora
83	R. J. Schroeder	RE	190	6' 4"	18	Soph.	Frosh	East Bernard
84	Bill Howton, Tri-Capt.	LE	180	6' 2"	21	Sr.	2-VL	Plainview
85	Al Boughton	RE	200	6' 5"	21	Sr.	2 Sq.	Sonora
86	Bill Wright	LE	212	6' 1"	21	Sr.	1 VL	Houston
87	Hardy Dean	RE	180	6' 1"	21	Jr.	2 Sq.	Conroe
88	Sammy Ward	RE	190	6' 0"	19	Soph.	Frosh	Laredo
89	Blois Bridges	RE	178	6' 1"	19	Soph.	Frosh	Grand Prairie
90	George Pontikes	LE	190	6' 1"	20	Jr.	1 Sq.	Houston
91	Billy Fisk	LE	170	6' 0"	20	Soph.	1 Sq.	Irving

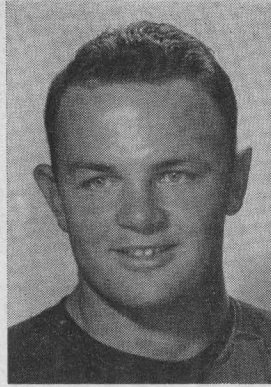
1951 ARKANSAS FOOTBALL ROSTER

No.	Name	Pos.	Wgt.	Hgt.	Age	Class	MS*	Home Town
11	McHan, Lamar	QB	190	6' 1"	18	'54	BA2	Lake Village
13	Troillett, Ralph	QB	165	6' 0"	20	'54	BA2	Little Rock
17	Hogue, Larry	FB	185	5' 11"	19	'53	Adv	Dermott
21	Nix, Edsel	HB	170	6' 0"	19	'54	BA2	Hope
22	Britt, Tommy	HB	155	5' 8"	19	'53	Adv	Hope
25	Reginelli, Phillip	HB	165	5' 11"	19	'54	BA2	Lake Village
26	Thomason, George	HB	170	5' 11"	21	'53	Adv	Hot Springs
29	Reeves, Sam	HB	175	5' 10"	22	'53	Adv	Lake Village
32	Sagely, Floyd	FB	185	6' 0"	19	'54	BA2	Van Buren
34	Carpenter, Lewis	FB	195	6' 1"	19	'53	Adv	West Memphis
40	Cole, Johnny	HB	170	6' 2"	20	'53	Adv	Warren
41	Sutton, Buddy	HB	190	6' 1"	20	'53	Adv	Hope
43	Troxell, Jack	HB	170	5' 11"	18	'54	BA2	Jonesboro
46	Phillips, Jiggs	HB	170	5' 10"	22	'52	**	Westville, Okla.
47	Elton, Murray	HB	175	6' 0"	21	'53	Adv	Crossett
49	Hallum, Charles	HB	180	6' 0"	19	'54	BA2	Camden
51	Smith, Jim	C	200	5' 11"	20	'52	Adv	Dermott
52	Ramsey, Charles	C	200	6' 1"	19	'54	BA2	Texarkana
53	Watkins, Wayne	C	195	6' 2"	19	'54	BA2	El Dorado
54	Griffin, Bob	C	230	6' 3"	22	'52	1-A	Frederick, Okla.
60	Lashley, Dave	G	190	5' 11"	19	'54	BA2	Fayetteville
61	Linebarier, Bob	G	200	6' 2"	19	'53	Adv	Camden
62	Spain, Harold	G	200	6' 0"	20	'54	BA2	Smackover
65	Marshall, Herbert	G	185	5' 9"	21	'52	Adv	Charleston, Mo.
66	Dumas, Sammy	G	200	6' 2"	19	'54	BA2	El Dorado
71	Hanner, Dave (Co-Capt)	T	235	6' 3"	21	'52	**	Parkin
72	Garlington, Tom	T	220	6' 2"	19	'54	BA2	El Dorado
73	Jones, Hershel	T	205	6' 3"	19	'53	Adv	Tichnor
75	Williams, Fred	G	230	6' 4"	21	'52	1-A	Little Rock
76	Stringer, Tom	T	225	6' 6"	20	'54	3-A	Stuttgart
77	Smith, Don	T	220	6' 4"	19	'53	Adv	Omaha, Neb.
78	Graves, Buster	T	235	6' 4"	19	'54	BA2	Memphis, Tenn.
79	Sperring, Jim	G	230	6' 2"	27	'54	Vet	Paxtang, Pa.
80	Huffines, Wesley	E	180	6' 1"	20	'54	BA2	Crum Lynne, Pa.
81	Perry, Pat	E	205	6' 4"	18	'54	BA2	Magnolia
84	Bogard, Jerry	E	180	6' 2"	19	'54	BA2	Stuttgart
85	Fischel, Fank	E	200	6' 2"	24	'52	Adv	Helena
86	Forrester, Bill	E	185	6' 0"	19	'54	BA2	Springfield, Pa.
87	Pickens, Billy	E	180	6' 0"	19	'54	NG	DeQueen
88	Summerall, Pat (Co-Capt)	E	215	6' 3"	21	'52	*	Lake City, Fla.

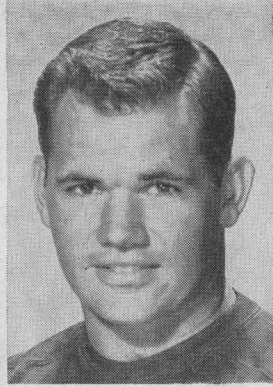
* (Military Status)—BA2-Basic ROTC 2nd Year; Adv-Advanced ROTC; NG-National Guard; Vet-Non reserve veteran; Def-Completed ROTC and deferred; 3-A Dependency deferment; *-Army Reserve; **Naval Reserve.



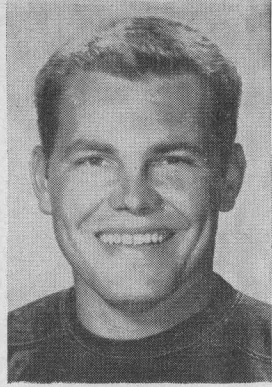
56—Bobby Moore



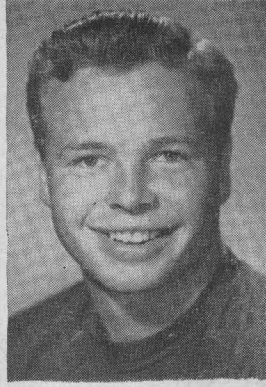
59—A. J. Loth



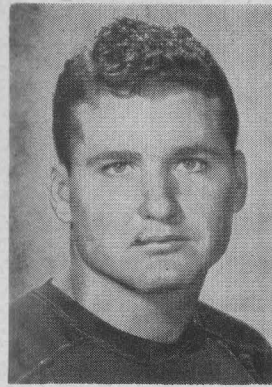
60—Simon Verret



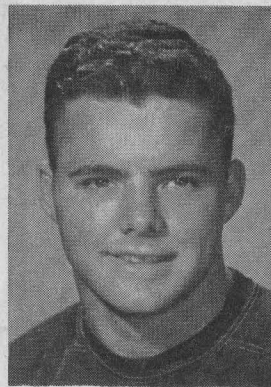
61—Gene Little



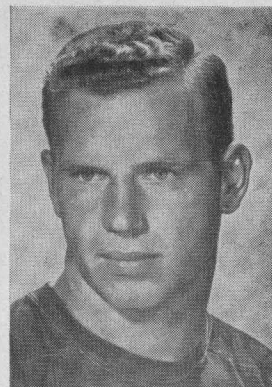
62—LaMar Lee



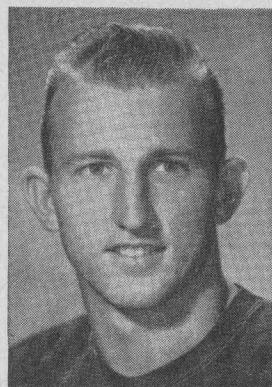
64—Walter Schleyer



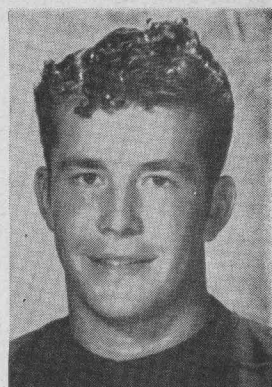
65—Dan Hart



66—Dan "Hans" Wagner



67—W. C. Treadway



68—John Boswell

☆ *The Southwest's
Finest . . .
and reasonable, too!*

WELDON Cafeteria

4916 South Main

- Open Daily—11:00 a.m. through 8:30 p.m.
- Two Free Parking Lots Adjoining

South End Building Materials Co.

READY MIX CONCRETE
SAND — GRAVEL — CEMENT

South Houston Plant
5102 Galveston Road
Phone MI-3328

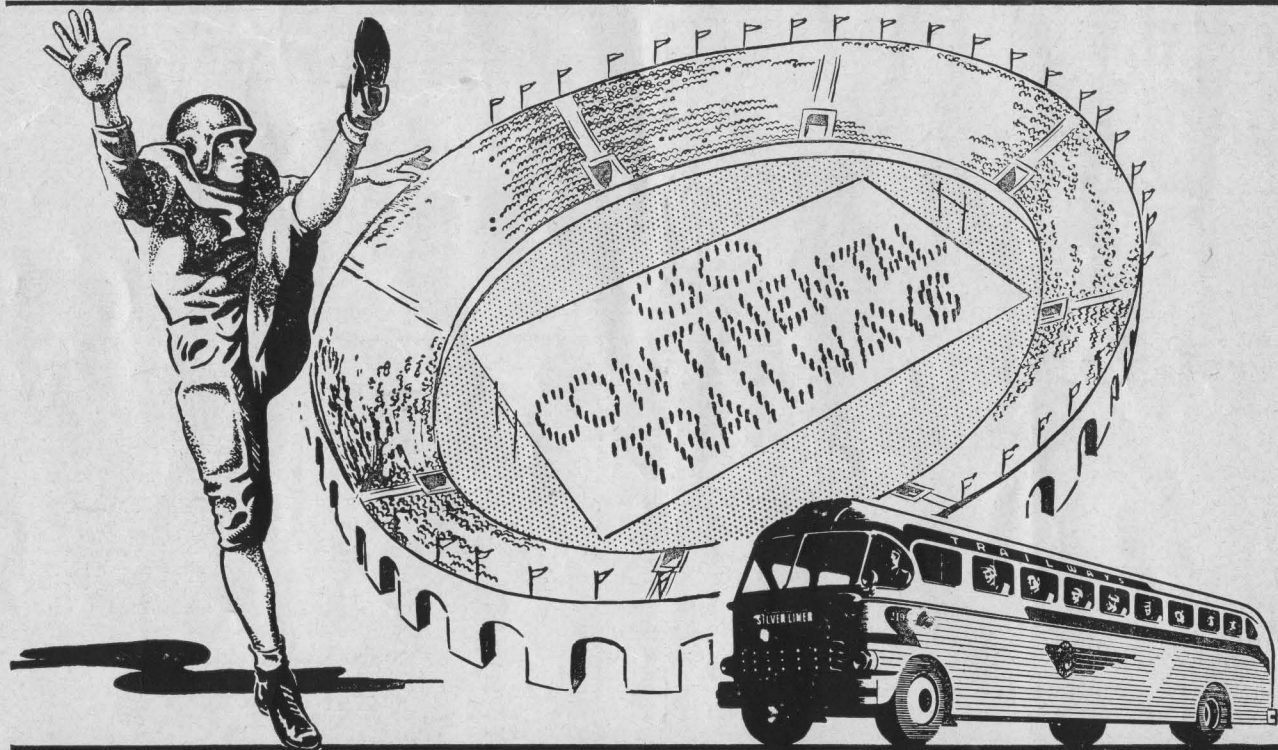
Kirby Drive Plant
4830 Kirby Drive
Phone LY-9131

COMPLIMENTS
OF

HERRIN TRANSPORTATION COMPANY

2300 WALKER

FA-5111



CHARTER BUSES FOR GROUP TRAVEL

Drinks in Stadium are
cooled with Texas Ice "Sized Ice"

TEXAS ICE & FUEL COMPANY

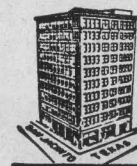
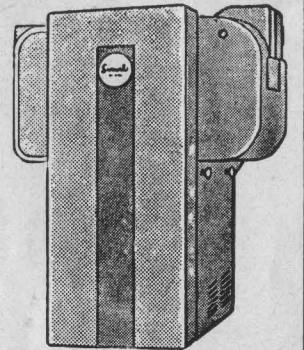


6301 Harrisburg

• WAYSIDE 2154

Servel All-Year GAS AIR CONDITIONING

★ Keep healthy in your
business and in your home
. . . Install Servel All-Year
Gas Air Conditioning. The
ONE UNIT that gives you
the perfect comforts of
WINTER HEATING . . .
SUMMER COOLING and
Controlled Air Circulation
for the "in-between sea-
sons."



FOR THE BEST IN GAS SERVICE CALL . . .

UNITED GAS

THE BIGGEST BARGAIN IN YOUR HOME TODAY



RICE
ATHLETIC
MEDICAL
STAFF

Rice Institute athletes receive the finest of care in regard to the treatment and prevention of injuries. In the photo at the upper left are the men who oversee this important phase of the athletic program, the team physicians and head trainer.

Left to right, they are Dr. Jack Brannon and Dr. Ed Smith, consulting physicians, Dr. Hugh Welch, team physician, and Eddie Wojecki, head trainer.

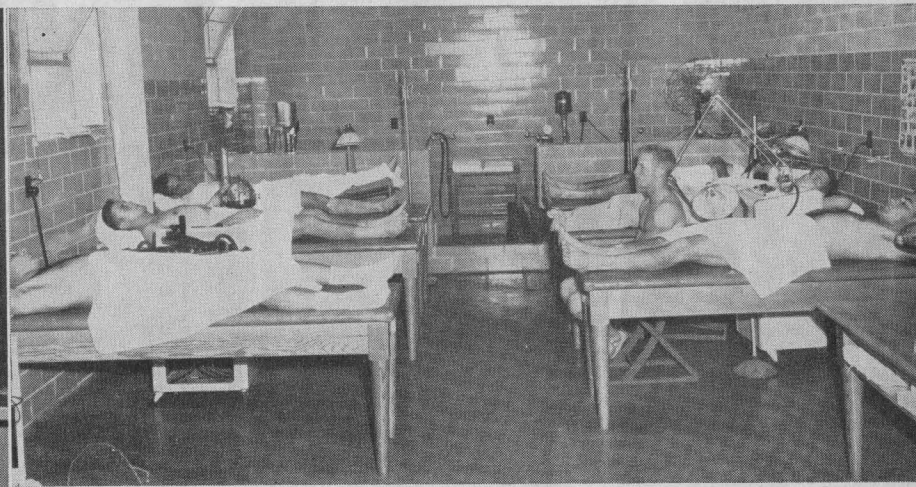
A very important factor in prevention of injuries to athletes is the acquisition and maintenance of good equipment designed to provide the greatest protection. The man who looks after the Owls' athletic equipment is J. B. Sorsby (lower left), who has been at Rice 20 years, the last ten years with the athletic department.

One of the principal features of Rice's fine new gymnasium is the elaborate training room quarters, supervised by the Owls' well-known trainer, Wojecki, who was named National "Trainer of the Year" in 1946. At lower right are some Owl gridmen making use of the varied devices specifically designed for treatment of athletic injuries.

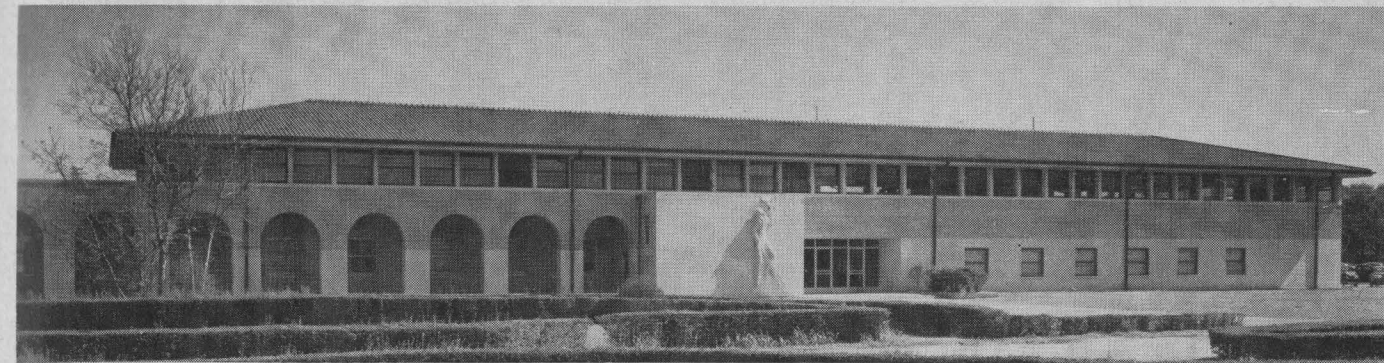
No injury, regardless of how minor, escapes the attention of the trainer. Each player is given a thorough physical examination by a special team of ten physicians before the season begins.



ATHLETIC EQUIPMENT ROOM



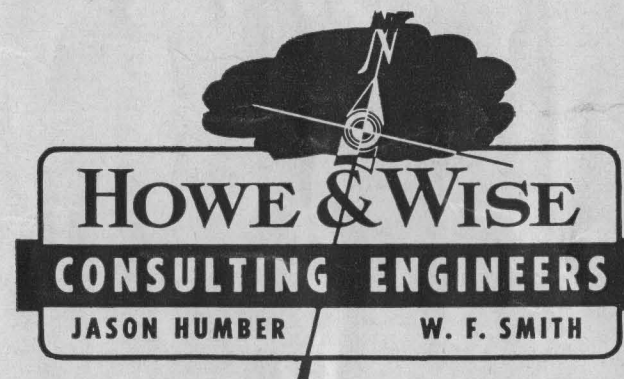
TRAINER'S ROOM



J. S. ABERCROMBIE LABORATORY BUILDING LABORATORIES, CLASS ROOMS, DRAFTING ROOMS FOR ELECTRICAL, CHEMICAL AND MECHANICAL ENGINEERING.

Jason Humber
Class of '22

W. F. Smith
Class of '26



AT LUNCH OR DINNER

You can always enjoy a delicious meal in the
Warwick's Famous Crystal Dining Room

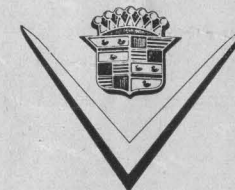
A PLEASURE TO SERVE YOU



R. T. CULLATHER, Manager

WARWICK HOTEL
AND APARTMENTS

Houston 1, Texas



D. B. McDANIEL CADILLAC
COMPANY

1320 MILAM STREET

HOUSTON, TEXAS

The Rice Athletic Association Would Appreciate Your Patronizing Our Advertisers

Do Your Level Best!

That's what YOU expect of the athletes who represent you on the football field, the cinder track, the basketball court and in all other events.

That's what YOU will expect from the great athletes who will represent the United States in the Olympic Games at Helsinki, Finland, next summer.

By the same token, that's what the athletes expect of YOU, Mr. and Mrs. American Fan.

They expect you to DO YOUR LEVEL BEST in contributing to the United States Olympic Fund so that EVERY great athlete in the nation will sail the Ocean to meet the challenge of the world.

Other nations are going to send forth powerful teams to end America's amazing record of Olympic victories. WE must meet that challenge. WE must have the financial assistance of ALL America.

Do YOUR level best now. Make your check or money order to
THE UNITED STATES OLYMPIC ASSOCIATION

And mail to

RICE ATHLETIC ASSOCIATION

P. O. Box 1892

Houston 1, Texas

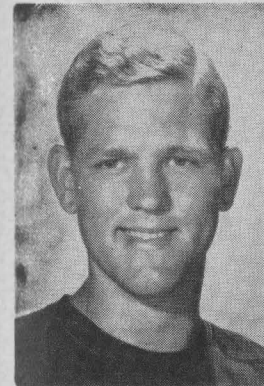
Please fill out this form:

I herewith subscribe \$ _____ to the United States Olympic Fund.

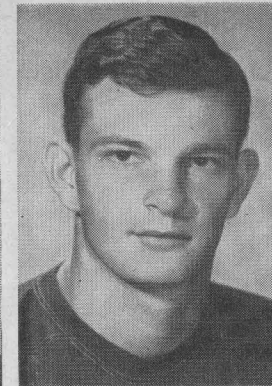
Name of donor _____

Address _____

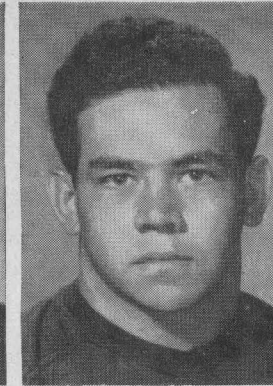
Every donor of twenty-five or more dollars will receive a complimentary pictorial summary of the 1952 Olympic Games.



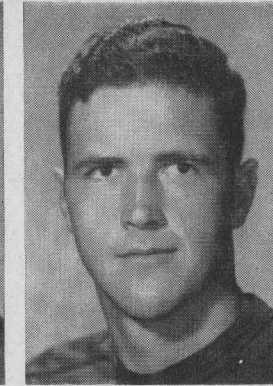
75—Ted Watson



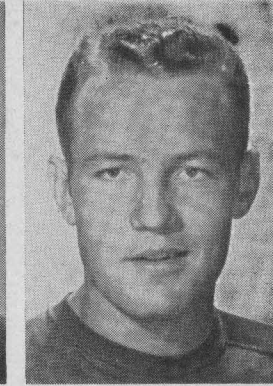
76—Kenneth Lewis



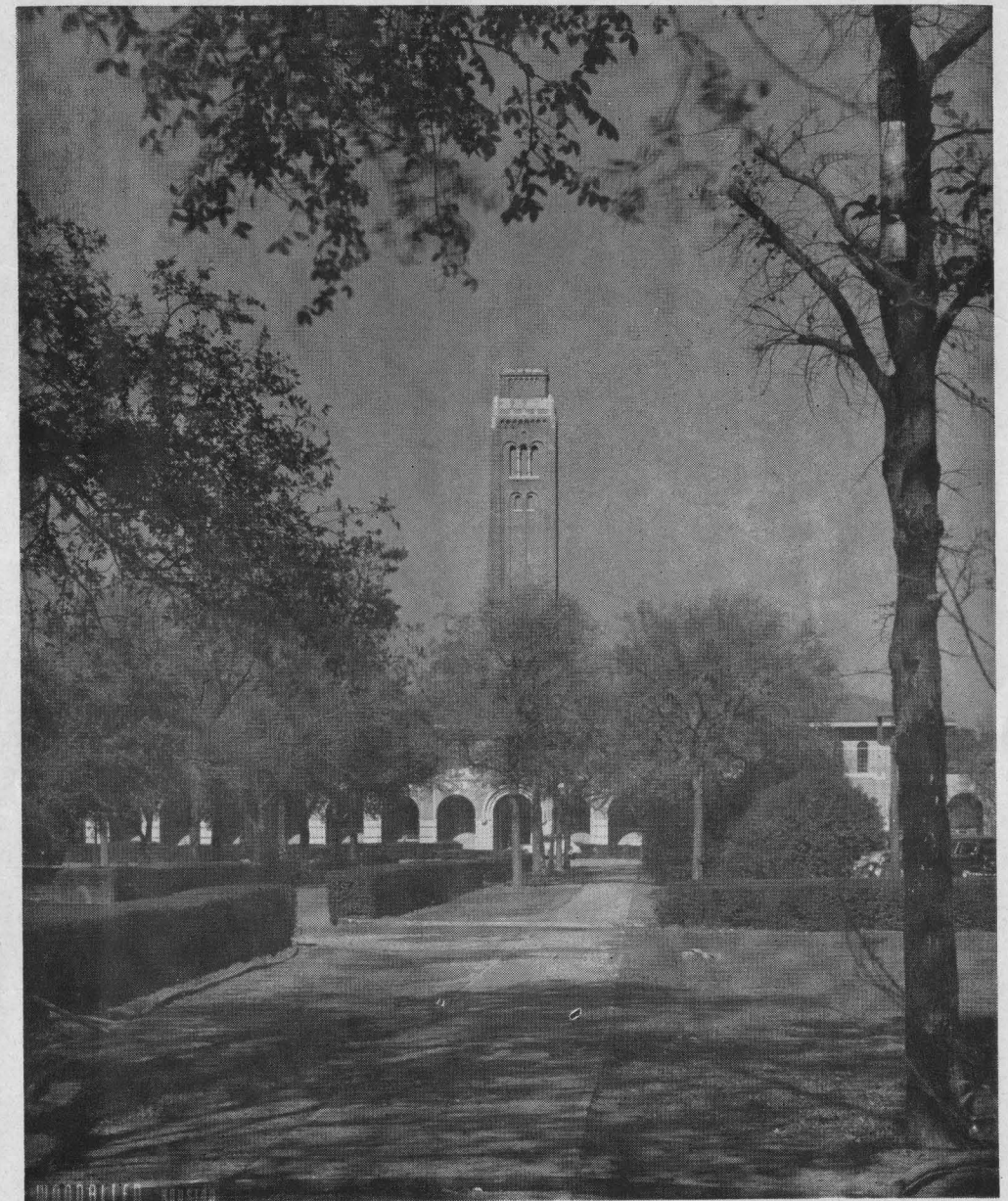
77—Dan Winship



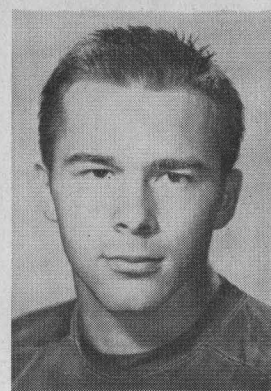
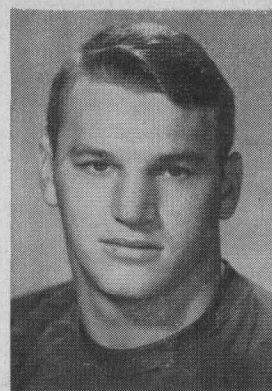
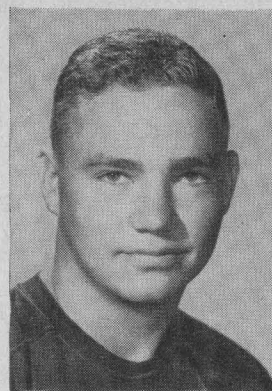
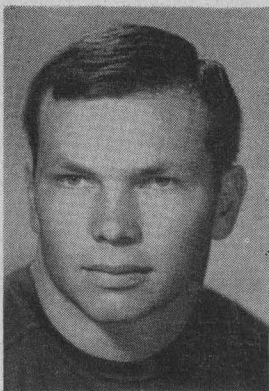
78—Richard Chapman



79—Buddy Edwards



The Campanile on Rice Institute Campus



69—James Timmons

70—John Hudson

71—Bill Crockett

72—Max Schuebel

73—Glenn Walls

RICE 1951-52

BASKETBALL SCHEDULES

VARSITY SCHEDULE

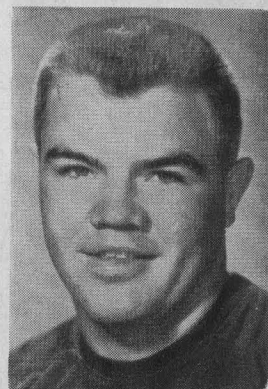
(non-conference games)

- November 27 (Tues.) Stephen F. Austin College at Nacogdoches
- December 1 (Sat.) Sam Houston State College at Huntsville
- December 3 (Mon.) Louisiana State University at Houston
- December 8 (Sat.) Tulane University at New Orleans
- December 11 (Tues.) Sam Houston State College at Houston
- December 14 (Fri.) Stephen F. Austin College at Houston
- December 18 (Tues.) Kansas University at Lawrence, Kansas
- December 20 (Thur.) Vanderbilt University at Nashville, Tennessee
- December 22 (Sat.) Tennessee University at Knoxville, Tennessee
- December 26-27-28-29 Southwest Conference Tournament at Dallas

(conference games)

- January 5 (Sat.) Southern Methodist University at Dallas
- January 8 (Tues.) Texas Christian University at Houston
- January 11 (Fri.) Texas A. & M. College at College Station
- January 15 (Tues.) University of Texas at Houston
- January 19 (Sat.) University of Arkansas at Fayetteville, Arkansas
- January 25 (Fri.) Baylor University at Waco

(Interim for mid-term examinations)



74—Hugh Wilson

- February 9 (Sat.) University of Arkansas at Houston
 - February 12 (Tues.) Texas Christian University at Ft. Worth
 - February 15 (Fri.) Baylor University at Houston
 - February 19 (Tues.) Southern Methodist University at Houston
 - February 26 (Tues.) University of Texas at Austin
 - March 1 (Sat.) Texas A. & M. College at Houston
- All Rice home games at the Rice Gym will begin at 8:15 p.m.

FRESHMAN SCHEDULE

- December 7 (Fri.) Allen Academy at Bryan
- December 12 (Wed.) Wharton Jr. College at Wharton
- January 11 (Fri.) Texas A. & M. frosh at College Station
- January 15 (Tues.) U. of Texas frosh at Houston
- January 19 (Sat.) Victoria Jr. College at Victoria
- February 9 (Sat.) Victoria Jr. College at Houston
- February 15 (Fri.) Wharton Jr. College at Houston
- February 19 (Tues.) Allen Academy at Houston
- February 26 (Tues.) U. of Texas at Austin
- March 1 (Sat.) Texas A. & M. frosh at Houston

(Two games to be added later)

Foote's Cafeteria

Houston's Finest Suburban Dining Room

2 Blocks West of Stadium
Continuous Service 11:00 A.M. to 8:30 P.M.
2407 RICE BOULEVARD
7 Days a Week

Frederick Poultry and Egg Co.

Distributors of
PETER RABBIT (LARGE WHITE SELECTED)
FRESH EGGS
and also that
DELICIOUS BARREL-BREADED NORTHWESTER
PHEASANT CHICKEN AT YOUR GROCER
VERNON C. FREDERICK, President
1817 Center Phone PR 5195 HOUSTON, TEXAS



Rice Ends Sonny McCurry and Bill Howton

Mmmm . . . delicious . . . that's no exaggeration about Diced Cream being 35% richer than ordinary ice cream.

And, say . . . the individual carton appeals to me, too . . . and the idea that everyone gets the flavor he likes.

Yes, I'm sold on Diced Cream . . . there's nothing like it in all the world!



For Name and Address of Nearest Dealer Call JU-0581



CAMELLIA DICED CREAM

The Rice Athletic Association Would Appreciate Your Patronizing Our Advertisers

RICE ALL-AMERICAN FOOTBALL PLAYERS

1949—"FROGGY" WILLIAMS, *end*
JOE WATSON, *center*

1946—WELDON HUMBLE, *guard*

1944—H. J. NICHOLS, *guard*

1935—JOHN McCAULEY, *fullback*

1934—BILL WALLACE, *halfback*

RICE ALL-SOUTHWEST CONFERENCE PLAYERS

1950—PAUL GIROSKI, *tackle*

1949—"FROGGY" WILLIAMS, *end*
JOE WATSON, *center*
RALPH MURPHY, *tackle*
GERALD WEATHERLY, *linebacker*

1948—"FROGGY" WILLIAMS, *end*
JOE WATSON, *center*

1947—JOE WATSON, *center*
J. W. MAGEE, *guard*

1946—WELDON HUMBLE, *guard*
HUEY KEENEY, *halfback*
CARL RUSS, *fullback*

1945—BOB NEMIR, *halfback*

1944—H. J. NICHOLS, *guard*
GEORGE WALMSLEY, *halfback*

1943—CHARLES MALMBERG, *tackle*

1942—WELDON HUMBLE, *guard*
DICK DWELLE, *fullback*

1941—ART GOFORTH, *guard*

1940—FRED HARTMAN, *tackle*
KEN WHITLOW, *center*

1939—OLIE CORDILL, *halfback*

1935—JOHN McCAULEY, *fullback*
LECHE SYLVESTER, *end*

1934—BILL WALLACE, *halfback*
JOHN McCAULEY, *fullback*
PRIMO MILLER, *tackle*

1931—LOU HASSELL, *tackle*

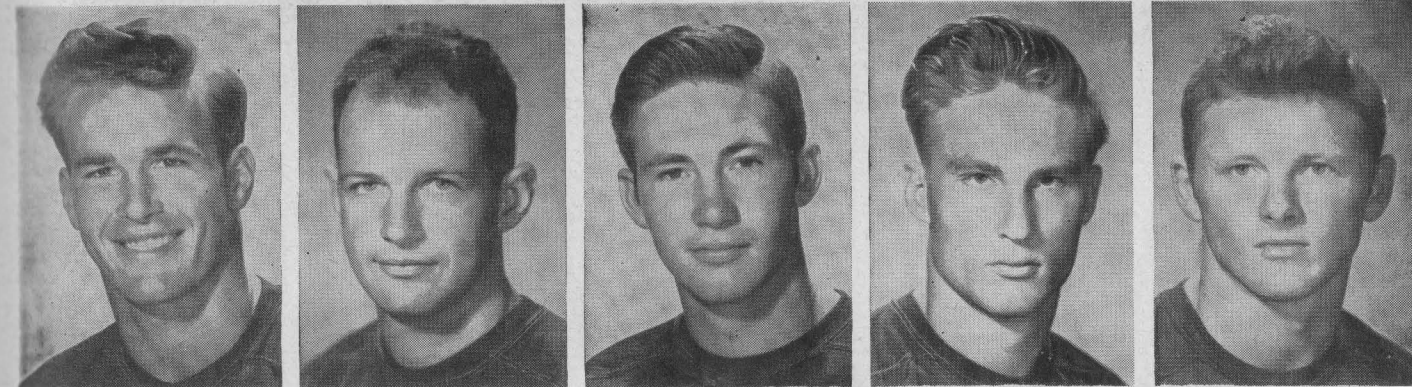
1926—WASH UNDERWOOD, *guard*

1925—WASH UNDERWOOD, *guard*
1921—JOHN UNDERWOOD, *guard*

1920—JOHN UNDERWOOD, *guard*
EDDIE DYER, *halfback*

No recognized all-conference teams were picked prior to 1920. However, the Owls had several stars in the 'teens when football at Rice was just beginning.

Among these early grid greats of Rice were such men as Mick Brown, first Owl player to gain wide acclaim in the Southwest . . . "Tony" Bell, first four-year letterman in the sport, and a fine back . . . Shirley Brick, who came back from World War I in 1919 to captain the team, a player that fans of that era say would have been All-American end if the Southwest had been getting the notice of the press then as now . . . Jim Dain, another fine end and captain of the 1920 team . . . W. M. Standish . . . Graves McGee . . . Tiny Kalb, and many others.



80—Sonny McCurry

81—Jack Taylor

82—Bobby Allen

83—R. J. Schroeder

84—Bill Howton

SONGS

RICE'S HONOR

All for Rice's honor, we will fight on.
We will be fighting when this day is done;
And, when the dawn comes breaking,
We'll be fighting on, Rice,
For the Gray and Blue. We will be loyal
To Rice be true.

GRAY BONNET

Put on your old gray bonnet, with the blue ribbon on it,
And we'll hitch Old Sammy to the fray,
And we'll rock, rock, rock 'em
And we'll sock, sock, sock 'em,
To the end of Judgment Day.

FIGHT SONG

Fight for Rice; Rice, fight on; Loyal sons, arise!
The Blue and Gray, of Rice today
Comes breaking through the skies.
Stand and cheer! Victory's near!
Sammy leads the way.
Onward go, to crush the foe.
We'll fight for the Blue and Gray.
Rice . . . Fight . . . never dies.
Blue . . . Gray . . . in the skies.
Stand . . . Cheer . . . Rah, Rah, Rah.
Go . . . Go . . . Yeaaaaa Rice!

YELLS

"THE AXE"

Give 'em the axe,
Give 'em the axe,
Give 'em the axe,
Where?
Right in the neck,
Right in the neck,
Right in the neck,
There!
Give the axe, the axe, the axe,
Where!
Right in the neck, the neck,
the neck, there!
Yea, RICE!

YEA BLUE, YEA GRAY

Yea B-L-U-E.
Yea G-R-A-Y.
Yea R-I-C-E
Hey, Hey, Hey!

WHISPER YELL

(Whisper)
With an R
With an R
With an ICE
With an O
With an O
With a WLS
Rice Owls Fight!
Louder: Repeat same Very Loud:
Repeat same.

LOCOMOTIVE

Sssssssssssssssss, Boom!
R-I-C-E, rah rah (slow)
R-I-C-E, rah rah (faster)
R-I-C-E, rah rah (real fast)
Rice, Owls, Fight!

FIGHT 'EM, OWLS

Fight 'em Owls
Fight 'em Owls
Fight 'em, fight 'em,
fight 'em, Owls
Fight 'em Owls
Fight 'em Owls
Fight 'em, fight 'em,
fight 'em, Owls
Rice Owls Fight!

DELAYED YELL

Count (to self)
1, 2, 3, 4, 5, 6, 7, 8—R
1, 2, 3, 4, 5, 6, 7, 8—I
1, 2, 3, 4, 5, 6, 7, 8—C
1, 2, 3, 4, 5, 6, 7, 8—E
Rice Owls Fight!



Yell Leaders: Earl Bellamy, Teddy Montz, Willie Moreno, T. F. Arner.

Drum Majorettes: Sue Levenson, Virginia Easley, Doris Neal, Barbara Sawyer, Sherrill Carmichael.

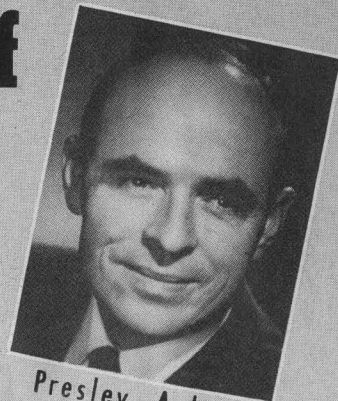
University of Arkansas Coaching Staff



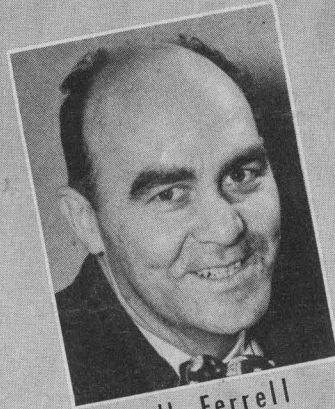
Johnny Morriss
Track



JOHN BARNHILL, Athletic Director



Presley Askew
Basketball



Bill Ferrell
Football



OTIS DOUGLAS, Head Coach



George Cole
Football



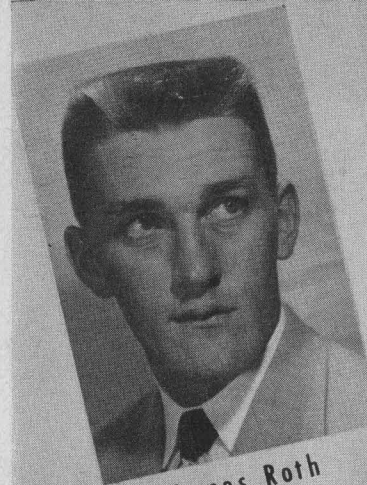
Dick Humbert
Football



Charles Hanks
Football



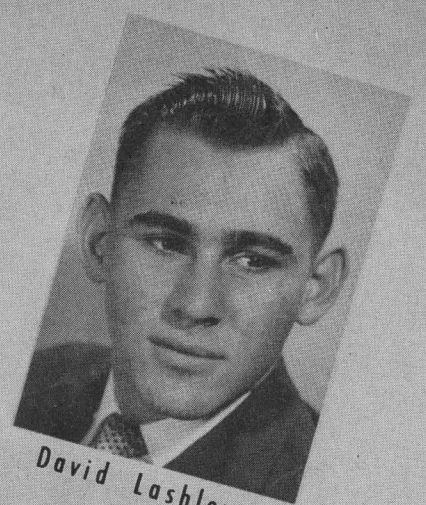
Tommy Thompson
Football



James Roth



Herbert Marshall



David Lashley



Sammy Dumas



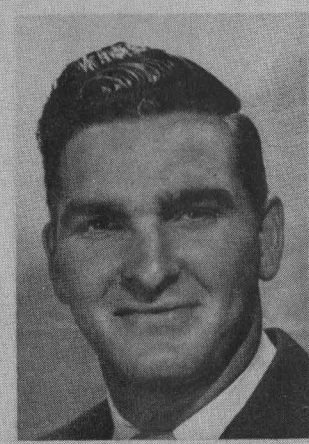
Tom Springer



Don Smith



Rupert Leohner



Hershel Jones



Dave Hanner

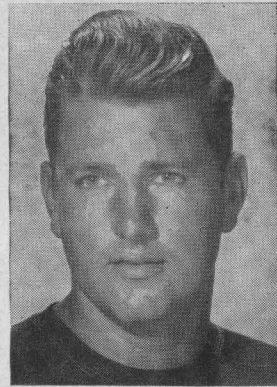


Buster Graves

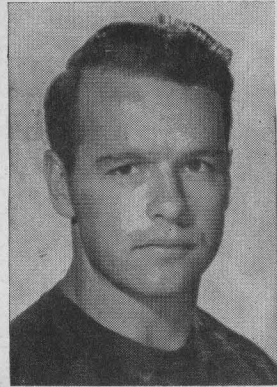
ARKANSAS



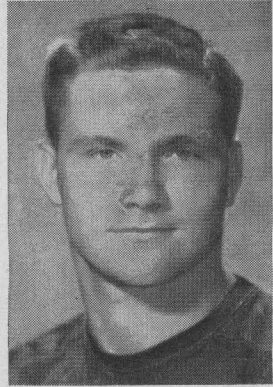
85—Al Boughton



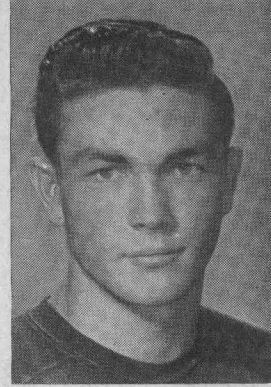
86—Bill Wright



87—Hardy Dean



88—Sammy Ward



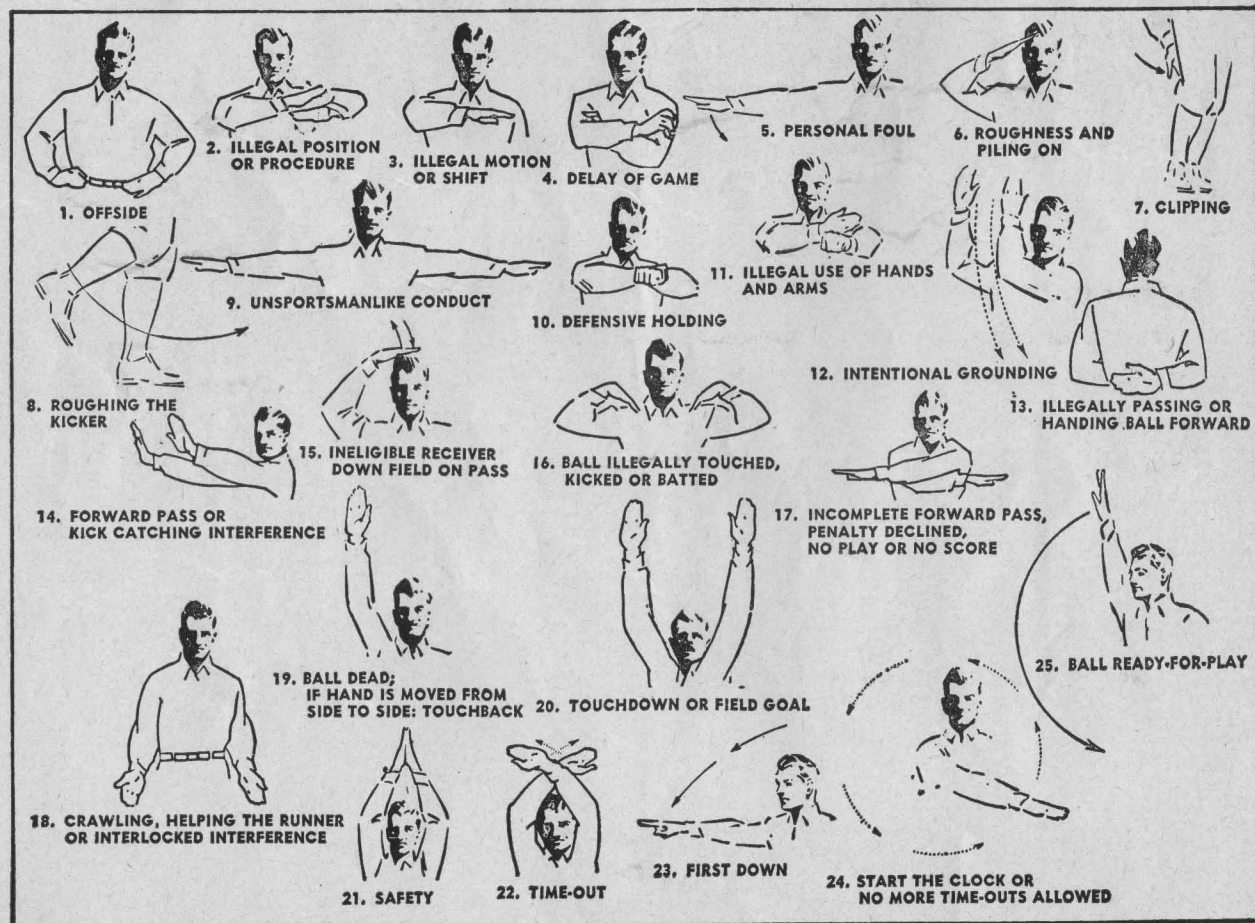
89—Blois Bridges

RICE FRESHMEN FOOTBALL SCHEDULE 1951

Coach—CHARLEY MOORE

Asst.—HAROLD STOCKBRIDGE

5 October (Friday)	T.C.U. freshmen at Houston
12 October (Friday)	Del Mar Jr. College at Houston
19 October (Friday)	S.M.U. freshmen at Dallas
26 October (Friday)	Texas freshmen at Austin
9 November (Friday)	Texas A.&M. freshmen at Houston

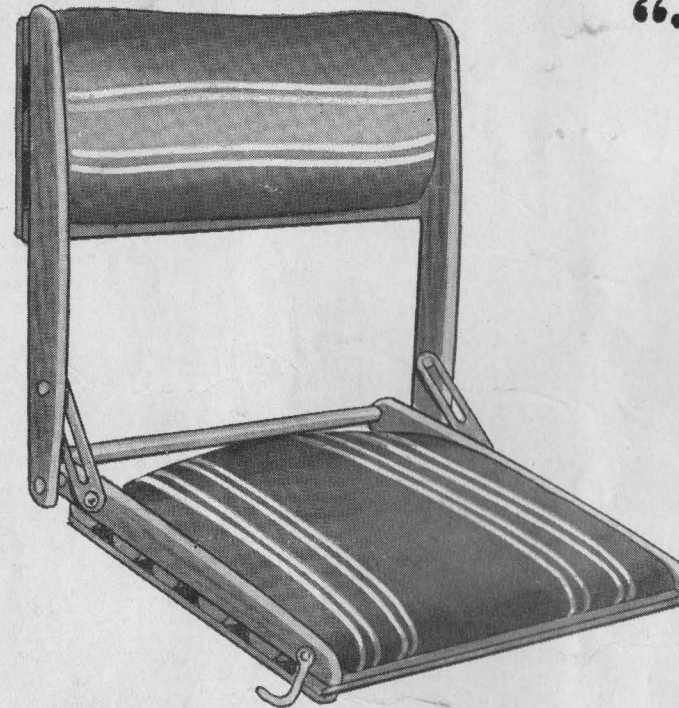


Holt's Sporting Goods

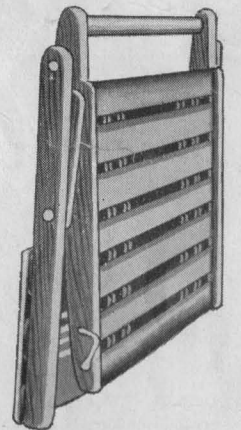
Where Houston Shops for FUN!

Comfort at Every Sporting Event!

"Take-Along" BACKREST



Note the **\$4⁹⁵**
Handle for
Easy Carrying! Each



The **first** really comfortable BACK REST . . . for boats, stadiums, . . . and a dozen other uses! Made of selected OAK, with soft cushions of smudge-proof painted water-repellent drill. Cadmium plated metal parts with hooks for fastening to boat seat. "Take-Along" BACK REST was designed to bring comfort at a price everyone can afford! Buy yours NOW for this season's big games!

ORDER BY MAIL—get yours in time for week-end football games, for your next fishing or boating trip!



HOLT'S SPORTING GOODS
Fannin at Lamar, Houston 2, Texas
Please send me () "Take-Along"
BACK REST at \$4.95 each.

NAME _____

ADDRESS _____

CITY _____ STATE _____

CASH CHARGE C.O.D.

America's most
popular cigarette



FLAVOR

MILDNESS

