



RICE vs. T.C.U.

RICE CAMPUS ★ NOVEMBER 25

OFFICIAL PROGRAM • TWENTY-FIVE CENTS

I lead the crowd in "Rah Rah Rah"
To cheer the team we like;
But when it comes to cigarettes
I cheer for Lucky Strike!



I really am a Lucky guy,
Just got my Ph. D.
To prove to you how much I know,
L.S., sir means F.T.



Be Happy- Go Lucky!

Enjoy your cigarette! Enjoy truly fine tobacco
that combines both perfect mildness and rich
taste in one great cigarette - Lucky Strike!

Perfect mildness? You bet. Scientific tests,
confirmed by three independent consulting
laboratories, prove that Lucky Strike is milder
than any other principal brand. Rich taste?
Yes, the full, rich taste of truly fine tobacco.

Only fine tobacco gives you both real mildness
and rich taste. And Lucky Strike means fine
tobacco. So enjoy the happy blending that com-
bines perfect mildness with a rich, true tobacco
taste. Be Happy—Go Lucky!



Some claim this and some claim that,
But when all is said and done...
For full, rich taste and mildness, too,
Lucky Strike's the one!



L.S./M.F.T.-
Lucky Strike
Means Fine Tobacco

COPR., THE AMERICAN TOBACCO COMPANY

Texas Christian University

FORT WORTH; TEXAS

vs.

Rice Institute

HOUSTON, TEXAS

Published by:

THE RICE INSTITUTE ATHLETIC ASSOCIATION

DON SUMAN, Program Manager

Official

FOOTBALL PROGRAM

Price 25c

SOUTH TEXAS NATIONAL BANK

Progressive Banking Service Since 1886

213 MAIN STREET • HOUSTON, TEXAS

MEMBER FEDERAL DEPOSIT INSURANCE CORPORATION



Satisfy Your Hunger at



6515 SOUTH MAIN
OPPOSITE RICE INSTITUTE

Bill Williams

GOOD FOOD TO FIT YOUR APPETITE AND YOUR POCKETBOOK

Represented for National Advertising by DON SPENCER COMPANY, INC., 271 Madison Ave., New York City.

TODAY'S

For RICE

If there is anything more unpredictable than Texas weather, it is Texas football, especially of the Southwest Conference variety.

That is why today's grid battle at the new stadium between the Rice Owls and T.C.U. Horned Frogs is strictly a toss-up, even though to date the Owls have won six and lost only two games in the 1950 season, while the Frogs have won only three and have lost five.

By this stage of the season in this sector, anybody is liable to beat anybody else, and there are thrills aplenty for the fans. Thrills should abound today as the Owls close out their home schedule for the season in the 29th meeting between these SWC rivals.

The Rice-T.C.U. series has produced one of the most unusual records of team rivalry in the nation as a check of the scores through the years listed below will reveal.

T. C. U. has won 15 games to 10 for Rice while 3 have been ties. Although the series began back in 1914, it was not until 1928 that the Owl-Frog meetings began on an annual basis without interruption. Beginning with that so-called modern era, the Froggies held a most commanding edge—in fact, reeled off 12 consecutive victories. But in his first year as head coach at Rice, Jess Neely fashioned a team (in 1940) that broke the T. C. U. jinx with a 13-6 triumph. Since then, the Owls have held a strong upper hand with seven victories against only two losses and a tie during the reign of Neely.

But one of those victories was a narrow squeak of 20-14 last season in which the Horned Frogs in a great second half rally scared the day lights out of the Southwest Conference champion Owls.

Chances are fairly good for today's game to set a new scoring mark for one or the other or both

teams in this era of all-out offensive football. However, as the scores reveal, the pattern has been one of defense with the most total points for one game a rather meager 36 back in 1938, while in 28 meetings Rice has never done better than 33 points in one game, or T.C.U. better than 29 in a contest with the Owls.

Defense certainly played a major part in last week's stirring 21-13 upset victory by the Owls over the Texas Aggies to knock the latter out of the running and hand the conference title to Texas. Although thin in experienced reserves, the Owl line played superbly to stop the fabulous Aggie offense sparked by Bob Smith. Today's assignment will be just as tough, as the Frogs threaten with their fine offensive threat, Gilbert Bartosh.

Much of the Frogs troubles in mid-season could be attributed to the absence of Bartosh, along with several other key men, because of injuries. And the same goes for the Owls. Had both teams been at full strength all the way, the conference race may have been a bit different. A few weeks ago, T.C.U. coach Dutch Meyer sardonically remarked "T.C.U. and Rice ought to play for the hospital championship."

But as this game takes place this afternoon, though still short of full strength, both squads are in much better shape, and this may be quite a grid battle. It certainly will not be a "hospital championship" game and the conference crown already has been won by Texas, but the Owls have their sights set on a second place finish. A victory today is a "must" to get that goal.

So, behind a line sparked by the blocking of Glenn Walls, Gene Little, and Ike Neumann, and with such defenders as Lee Stonestreet, Paul Giroski, Bob Winship, Bill Howton, Sonny McCurry and others, the Owl first string backfield quartet of Glass, Burkhalter, Wyatt, and Glauser will go for victory today.

ALL-TIME RICE AND T. C. U. FOOTBALL RECORD

1914—Rice 0T.C.U. 0	1931—Rice 6T.C.U. 7	1941—Rice 0T.C.U. 0
1915—Rice 33T.C.U. 3	1932—Rice 6T.C.U. 16	1942—Rice 26T.C.U. 0
1916—Rice 7T.C.U. 7	1933—Rice 3T.C.U. 26	1943—Rice 13T.C.U. 6
1917—Rice 26T.C.U. 0	1934—Rice 2T.C.U. 7	1944—Rice 6T.C.U. 9
1923—Rice 0T.C.U. 6	1935—Rice 6T.C.U. 27	1945—Rice 13T.C.U. 14
1924—Rice 7T.C.U. 3	1936—Rice 0T.C.U. 13	1946—Rice 13T.C.U. 0
1928—Rice 0T.C.U. 7	1937—Rice 2T.C.U. 7	1947—Rice 7T.C.U. 0
1929—Rice 0T.C.U. 24	1938—Rice 7T.C.U. 29	1948—Rice 21T.C.U. 7
1930—Rice 0T.C.U. 20	1939—Rice 0T.C.U. 21	1949—Rice 20T.C.U. 14
		1940—Rice 13T.C.U. 6		

Rice victories10
T.C.U. victories15
Ties3
Most points 1 game (total)36 (1938)

Most points 1 game by Rice33 (1915)
Most points 1 game by T.C.U.29 (1938)
Biggest Rice victory margin30 (1915)
Biggest T.C.U. victory margin24 (1929)

GAME

For T. C. U.

Back in the early thirties a tall, skinny kid came out of West Texas to become an All-American and an all-time Southwest Conference performer at T.C.U. He was a fellow named Sammy Baugh, and at T.C.U. he wore jersey number 45. There's another youngster at Frogland now, also rather slight of build, and he wears number 45. A boy by the name of Gilbert Bartosh from Granger.

He is only a sophomore, but the Bartosh guy is off to a great start on his college career as the acknowledged leader of the T.C.U. Horned Frogs offense. Keep an eye on that 45 today, because past performances of the Froggies this season bear out the contention that as Bartosh goes, so goes the Frogs.

Last weekend, the little man was in fine form and came much closer than a lot of folks realize to leading his teammates to an upset that would have matched or surpassed the Rice Owls' upending of the Texas Aggies. The Texas Longhorns beat the Frogs 21-7, at Fort Worth. But it was a much closer game than the score would indicate.

It was just about the best showing of the season by the Frogs, despite the loss to power-laden Texas.

And the Froggies would like very much to keep in the groove of improved play.

Today's game finds both the Frogs and Owls in much the same position. Both clubs were crippled by mid-season injuries, but now have shaken off most of that hospital pallor and are ready to go at it.

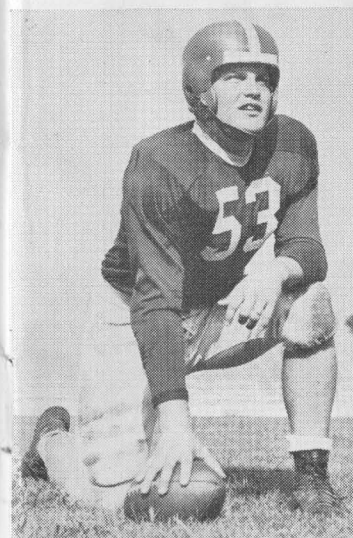
T.C.U., ably coached by the veteran Dutch Meyer, always presents intricate offense and defense formations to keep the opponents off balance and the fans intrigued. Today, the Froggies likely will present another wide assortment of their trickery in an effort to slip up on the Owls, who are back in the lime-light after the triumph over the Aggies.

Bartosh is slated to direct the T.C.U. offense, and will handle the ball on a majority of the plays. He gets able assistance from offensive backfield teammates, Bob McFarland, Bobby Jack Floyd, and John Morton.

The Frogs have a flock of top notch linemen, including such old standbys as seniors Max Eubank at center, Captain Clarence Marable at tackle, and the Moorman twins at the ends, all who play on both offense and defense.

With the right kind of breaks, this is a good spot for a T.C.U. victory, and the Froggies will be out to give their best and make the most of their opportunity.

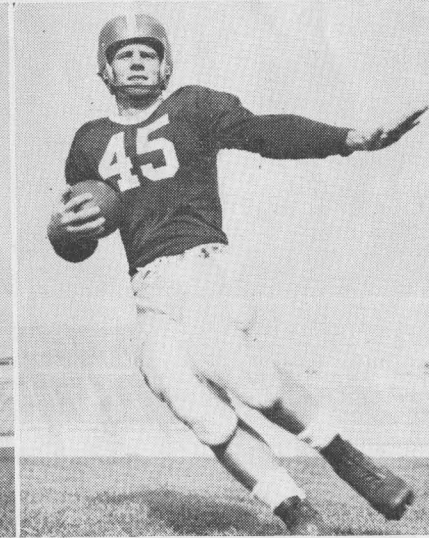
T. C. U. HORNED FROGS



Max Eubank



Bob Jack Floyd



Gilbert Bartosh

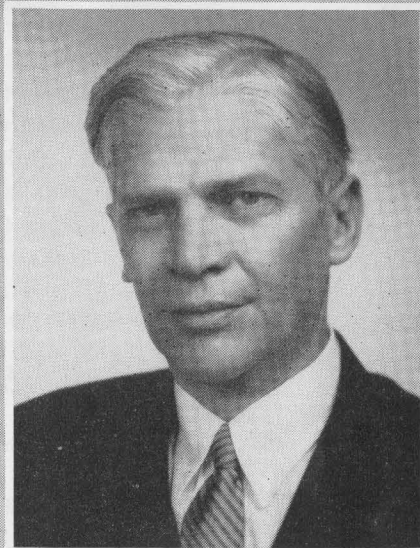


Clarence Marable

BOARD OF GOVERNORS OF THE RICE INSTITUTE
 ...TRUSTEES...



GUS S. WORTHAM



GEORGE R. BROWN
 CHAIRMAN



LAMAR FLEMING, JR.



WILLIAM A. KIRKLAND



J. NEWTON RAYZOR



DR. FREDRICK R. LUMMIS

TERM MEMBERS

HERBERT ALLEN
 ROBERT P. DOHERTY

FRANCIS T. FENDLEY
 WALTER L. GOLDSTON
 JOHN S. IVY

ROBERT H. RAY
 HARMON WHITTINGTON



DR. WILLIAM V. HOUSTON
 President, The Rice Institute

The Rice Institute is honored to welcome its guests in this new stadium. We can all be proud of the finished structure but we are still more proud of the way in which it has been provided by so many citizens of Houston.

Some thirteen thousand seat options were purchased by those who gave the initial impetus to the Stadium. The general contracting firm and many of the suppliers of material donated their normal profits and overhead costs to permit the finest possible design. And very especially, the hundreds of men working on the construction put into it their full and enthusiastic efforts to complete a magnificent job in record time.

To all of those who gave of their time, their efforts, and their money I want to express Rice's thanks. To you, our guests, may I express the wish that the stadium may fulfill its purpose in your enjoyment, and in the achievements of Rice's teams.

DR. WILLIAM V. HOUSTON



THE NEW STADIUM

Football fans who attend the home games of The Rice Institute Owls are privileged to see major college football in the newest and finest stadium in the nation.

This beautiful structure, which can seat 70,000 fans, is not only the first of such size to be constructed in its entirety in the nation in many years, it is the most modern plant anywhere.

All of the finest features of major stadia elsewhere in the nation have been incorporated into this one, along with many new outstanding features.

This new stadium on the campus of The Rice Institute was constructed to provide proper facilities for fans of the great and growing Houston area to see major college football. Its presence is slated to make Houston the grid capital of the greater Southwest.

The new stadium at Rice has been built without profit by Brown & Root, Inc. of Houston. George R. Brown, chairman of the Board of Trustees of The Rice Institute, is executive vice-president of that firm.

Other prominent Houstonians or firms which figured in on the building of the new stadium include Lloyd & Morgan, and Milton McGinty, who were the architects... Lockwood & Andrews, civil and mechanical engineers... Walter P. Moore, structural engineer... Mancill Allen, sodding expert... C. J. Rollo, general superintendent of the project... and Frank Kuich, construction superintendent.

SPECIAL FEATURES OF NEW STADIUM

You, who are spectators at this fine new stadium, may look about and see for yourself the many outstanding features of this mammoth structure that was built in less than ten months.

Note that the stands slant at a concave angle, that is, they incline gradually from 25 to 35 degrees, rather than at a straight 30 degree angle as in the old stadium. This provides a greatly improved direct line of vision of the playing field. With the elimination of a track around the field, the stands are closer to the field of play to help more than ever in putting spectators right on top of the field action.

The opera-type fold-back seats in the boxes beyond a doubt are the finest in the nation for viewing a football game with relation to location and comfort. The remainder of the seats are of the best quality—they are made of planks of redwood, which do not splinter. Note that each seat is 18 inches wide and 12 inches deep, well above the average space per spectator as in most stadia.

The concourses on the lower and upper decks are of maximum width, 60 to 90 feet on the lower, and 20 to 60 feet on the upper, to provide for a maximum of traffic flow.

Such services as concession stands, rest rooms (22 in all), telephones, etc., have been strategically located on the concourses so that no one will have a long walk to reach such facilities.

The lighting system is one of the finest in the world. There are 24 lamps on each of the '16 towers. Light intensity is measured at 55 foot candles. These lights have a special control beam so they will not shine directly into the eyes of players or fans.

The huge press box atop the west stands is one of the largest and most modern anywhere. It serves a minimum of 300 working newsmen, broadcasters, and photographers. The triple deck press box is 240 feet in length, with the first deck the "radio level," the second deck is "press row," and the top deck is for photographers and newsreel cameramen.

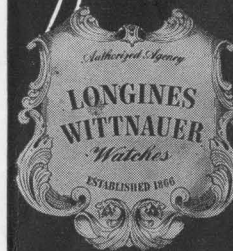
OFFICIAL TIMING WATCH FOR THE

RICE-T. C. U. FOOTBALL GAME

Longines

The World's Most Honored Watch

THE WORLD STANDARD OF ACCURACY FOR SPORTS
TIMING . . . 10 WORLD'S FAIR GRAND PRIZES, 28 GOLD
MEDALS . . . HIGHEST OBSERVATORY ACCURACY HONORS



Product of

Longines-Wittnauer Watch Company

SINCE 1866, WATCHES OF THE HIGHEST CHARACTER

LONGINES WATCHES from \$71.50; WITTAUER WATCHES from \$34.75



GO GET 'EM, OWLS!

The **HOUSE**
of **CARPETS**

FLOOR COVERINGS

ALSO

CONTRACT DEPARTMENT

FOR COMMERCIAL USE

3703 SOUTH MAIN ST.

LI-2005

JA-9633

AT LUNCH OR DINNER

You can always enjoy a delicious meal in the
Warwick's Famous Crystal Dining Room

A PLEASURE TO SERVE YOU



R. T. CULLATHER, Manager

WARWICK HOTEL

AND APARTMENTS

Houston 1, Texas

"The Official Watch for Timing this Game is Longines . . . The World's Most Honored Watch"



For the
**All-American
Week-End**



Make The Shamrock your "home-team" hotel — where gracious hospitality and a warm welcome are yours, whoever your team is in today's game.

It's well to "suit-up" at The Shamrock and enjoy the comfort, the faultless service, the superb cuisine, the luxurious facilities that only The Shamrock affords its guests.

Cavalcade of Stars

There's always exciting big-name entertainment in The Shamrock's famed Emerald Room . . . stars of stage, radio and motion pictures appear continually, in person, in the Cavalcade of Stars. You'll enjoy your "night out" in The Shamrock's supper clubs.

GLENN McCARTHY, President

M. JACK FERRELL, Exec. Manager

The Rice Athletic Association Would Appreciate You Patronizing Our Advertisers

TEXAS' OLDEST DODGE & PLYMOUTH DISTRIBUTOR



COME IN . . .

drive the new Dodge yourself
at **JACKSON MOTORS**

- Rugged Beauty
- Famous Dodge Dependability
- Solid Comfort

Always Keep Your Car in Top Shape with
Jackson's Expert Repair Service

JACKSON MOTORS
Houston
2404 Main Street

THE RICE INSTITUTE ATHLETIC COACHING STAFF



JOE DAVIS
LINE COACH



CECIL GRIGG
BACKFIELD COACH



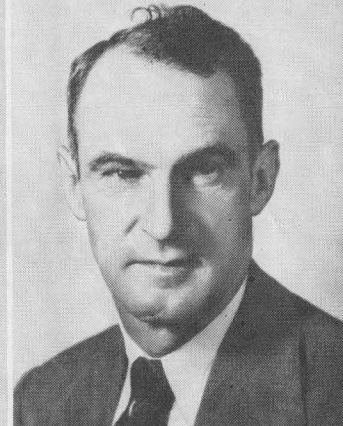
A.M. BALE
END COACH



CHARLES MOORE
FRESHMAN COACH



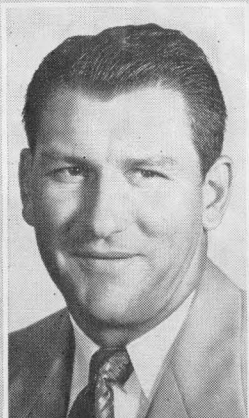
EMMETT BRUNSON
TRACK COACH
BUS. MGR. OF ATHLETICS



JESS NEELY
ATHLETIC DIRECTOR
HEAD FOOTBALL COACH



DON SUMAN
BASKETBALL COACH



HAROLD STOCKBRIDGE
BASEBALL COACH
ASST FOOTBALL COACH



JACK McBRIDE
ASST FOOTBALL COACH



EDDIE WOJECKI
HEAD TRAINER



CARROLL MARTIN
OFFICE MGR.



BILL WHITMORE
SPORTS NEWS DIRECTOR

TOUCHDOWN

OWLS!



For your favorite sports on TV... See



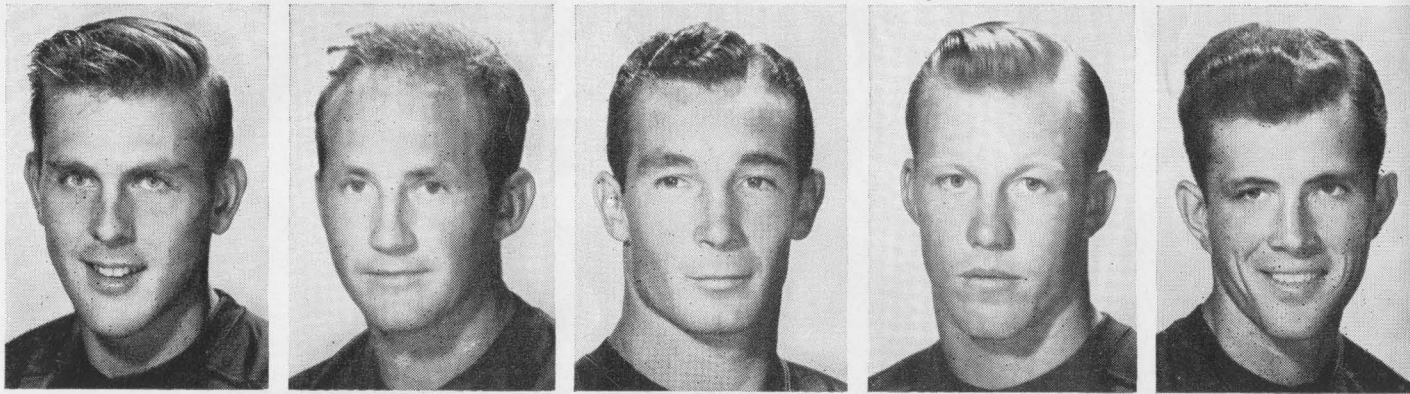
BLACK-DAYLITE TELEVISION

All year round, your favorite sport is at your fingertips, clearly and sharply, with a new G-E Black Daylite Television receiver. Thrill to the big-as-life, close-up, steady picture in a beautiful cabinet. You'll be delighted with any of the smart up-to-date models your G-E dealer is now showing. Ask for a home demonstration. Before you buy TV see G-E.

MONTGOMERY-WARD, Inc.

901 CAPITOL AVENUE

HOUSTON, TEXAS



10—Sammy Burk 44—Sonny Wyatt 20—Donald Campbell 15—Dickie Bob Haddox 45—Rex Proctor

SAMMY BURK, Back—Soph, 170, 5'11". This youngster from Luling played so well in fall drills he quickly moved up to battle for a starting job as a defensive halfback . . . very aggressive.

SONNY WYATT, Back—Senior, 172, 5'8". Smallest (in stature) but one of best backs on squad . . . very fast starter, seldom loses ground . . . was team's leading ground gainer, third in conference behind Rote and Mazzanti last fall . . . had a net gain of 704 yards, lost only 11 in 137 carries . . . will do much of the punting . . . only full season '49 regular returning . . . was one of most under-rated backs in Southwest last fall, should be in spotlight in his wind-up as Senior.

DON CAMPBELL, Back—Senior, 168, 5'10". All-stater from Port Arthur has been in background because of host of experienced backs two previous years . . . may come through this fall.

DICKIE BOB HADDOX, Back—Soph, 160, 5'9". Smallish, but talented, this will be his "year to learn" as soph.

REX PROCTOR, Back—Senior, 173, 5'10". Ranked fourth in conference in punt returns in '49 with 13.8 yard average in 19 returns . . . valuable safetyman . . . from the quaintly named town of Sour Lake . . . an all-around athlete, he plays baseball and basketball, too.

Our Congratulations to Rice Institute
on their New Stadium, and to Brown
& Root, Contractors for an Outstand-
ing Job Performed in Record Time.

FARNSWORTH & CHAMBERS Co., Inc.

CONTRACTORS **F&C** ENGINEERS

ATwood 2451 • BOX 74 • 3018 LEELAND

HOUSTON 1, TEXAS

The Rice Athletic Association Would Appreciate You Patronizing Our Advertisers

3 RISING STARS *going places — fast!*

HOUSTON Stadium
POWER PACKED Gasoline & Oils

ADA OIL COMPANY
Your Friendly SERVICE STATIONS

Just as your new HOUSTON STADIUM adds to your football pleasure this season—so, too, your new *improved* PHILLIPS 66 gasoline adds to your motoring pleasure this year.

Higher anti-knock, *power-packed* for greater mileage and lower cost, PHILLIPS 66 is the gasoline for *your* car, for *your* budget.

The odds are 3 to 1 you'll find the car with that extra-smooth, *gliding* start . . . with that fast, *effortless* get-away—using PHILLIPS 66 gasoline and lubricants!

In motoring, as in football . . . it's *performance* that counts. That's why each week, more and more thousands of Texas motorists improve their score with PHILLIPS 66.

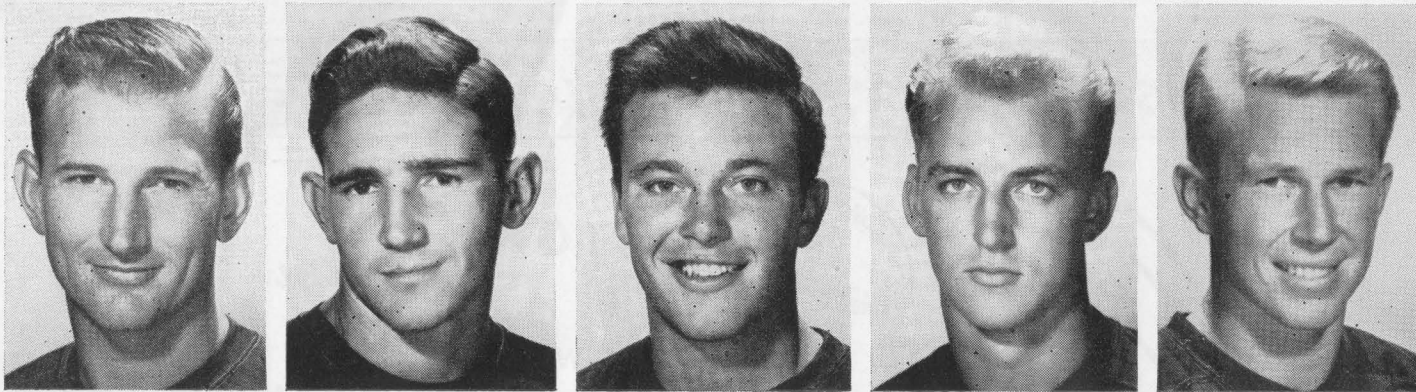
Today, tomorrow — *always* — drive into one of the more than 300 Phillips 66 Service Stations serviced by ADA OIL COMPANY. You'll like their friendly, fast, and thorough service. You'll marvel at the greater mileage and lower operating costs their products give you.

FOR GOING PLACES *fast* . . .

IT'S *Always* PHILLIPS 66

ADA OIL COMPANY
DISTRIBUTORS IN THE TEXAS GULF COAST AREA
POWER PACKED
Petroleum Products

PHONE **WOadcrest 9666** **609 HUGHES STREET HOUSTON, TEXAS**



25—Harmon Carswell 35—Bill Frazier 36—Billy Ed Daniels 26—Dan Drake 16—Vernon Glass

HARMON CARSWELL, Back—Senior, 167, 5'11". May be ready for good year...injuries so far have kept this former all-state back from Lufkin under cover. Can pass with best of them.

BILL FRAZIER, Back—Soph, 175, 5'10". Small, but smart, he's a fine field general...makes good grades...good passer...from nearby Pasadena. Can play fullback, too.

BILLY ED DANIELS, Back—Soph, 175, 6'. Lacks only experience to be a top notch halfback...noted for speed in high school at Kerrville in "hill country."

DAN DRAKE, Back—Soph, 175, 6'1". This Ft. Worth youngster showed up well with frosh. Needs experience, but developing fast.

VERNON GLASS, Back—Senior, 170, 5'11". A key man in Rice grid picture...has lettered twice, but never been full-fledged regular as played behind Tobin Rote...well-groomed for the role, should make team "go" as leader and play-caller. Excellent passer, adept ball handler.

It's **REALLY DRY**—

You've Been Waiting For

a really DRY, really LIGHT, beer like today's sensational Premium Quality Southern Select. It's everything you've always wanted in a beer! Discover it yourself.

It's
Southern
Select

**FOR ALL-
EVENING
FUN!**



Galveston-Houston Breweries, Inc.
Galveston, Texas

ON BEHALF OF THE EMPLOYEES,
MANAGEMENT AND OWNERS OF
W. D. HADEN CO.....

Congratulations TO RICE INSTITUTE

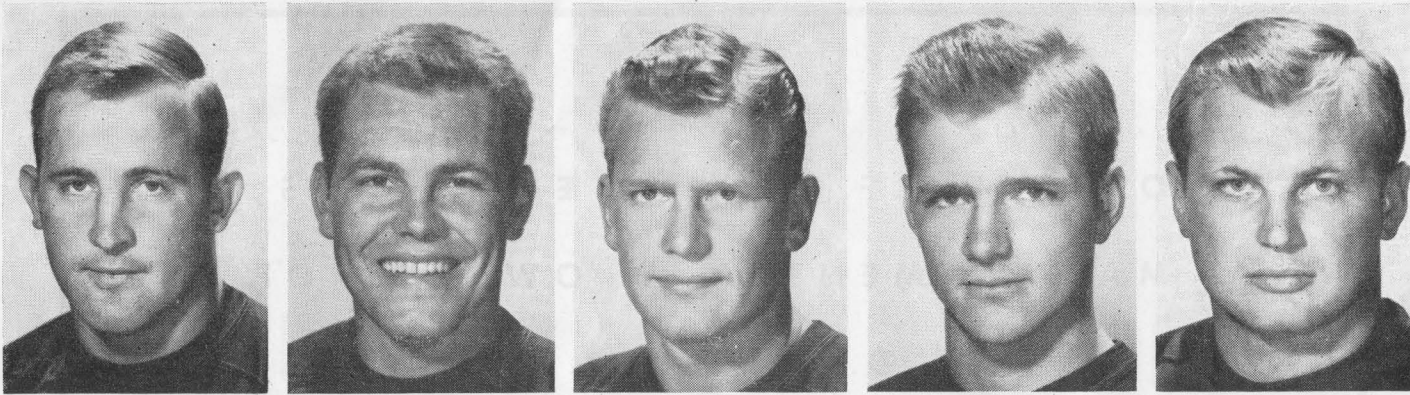
*for the vision and foresight
in bringing to Houston the
magnificent facilities of
this splendid new stadium*

W. D. HADEN CO.

Suppliers of all Concrete for Rice Stadium

GALVESTON HOUSTON PORT ARTHUR BEAUMONT

The Rice Athletic Association Would Appreciate You Patronizing Our Advertisers



65—Ed McLeaish 61—Eugene Little 67—Charles Stearnes 64—Don Mullenix 62—Ike Neumann

ED McLEAISH, Guard—Junior, 195, 6'. A "holdout" last fall, has three more years eligibility...likely will play a lot on defense.

GENE LITTLE, Guard—Soph, 210, 6'1". Comes from a "football family" in Corpus Christi...only soph likely to be a starter... will help a lot if he matches spring performance in the fall...rough and ready.

CHARLES STEARNS, Guard—Junior, 202, 6'. Fits same category as McLeaish, although he played a little and has only two years eligibility...moves well for a big man.

DON MULLENIX, Guard—Junior, 201, 6'1". Sat out the '49 season as far as playing in games was concerned, so had three years eligibility beginning with '50. Learned a lot scrimmaging against strong varsity...played well in spring training...can be valuable man at "short" position if he comes through.

IKE NEUMANN, Guard—Senior, 197, 5'11". A converted fullback, the Port Arthur lad has found his niche...showed up very well as guard and linebacker on defense in late season games... had a good day in Cotton Bowl game...may be an "iron man" as he's a fine blocker as well as defensive performer.

DOWNTOWN CHEVROLET CO.
OF HOUSTON



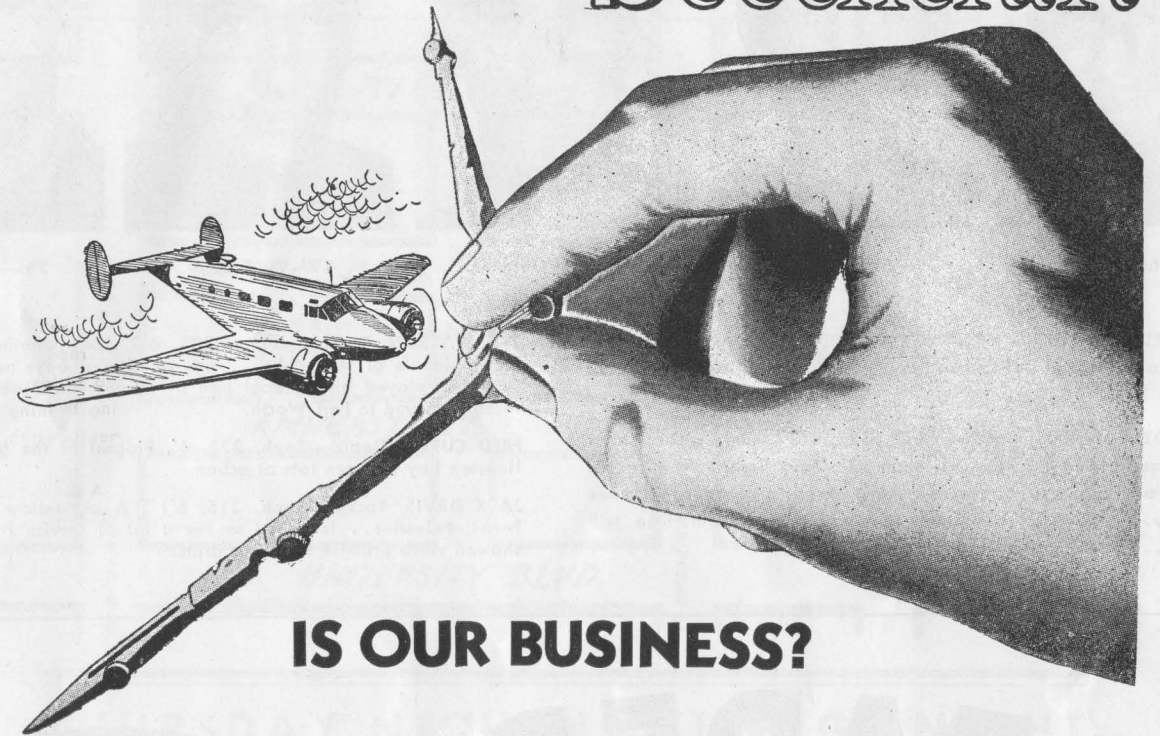
Sales and Service

McKinney at Austin

PReston 1204

The Rice Athletic Association Would Appreciate You Patronizing Our Advertisers

THE *Life Span* OF YOUR **Beechcraft**



IS OUR BUSINESS?

In keeping with the progress of advanced Beechcraft design, the J. D. Reed Company has developed an engineering and economic approach resulting in important new maintenance standards that have substantially reduced costs for customers and lengthened the life span of their aircraft.

The maintenance procedure in our shop is a miracle of speed and efficiency with new methods, new tools and new techniques—all perfected by the J. D. Reed Company engineering staff.

We urge you to avail yourself of the superior facilities offered by the J. D. Reed Company—a company backed by 20 years of know-how derived from experience, engineering and research.



HOUSTON
Municipal Airport

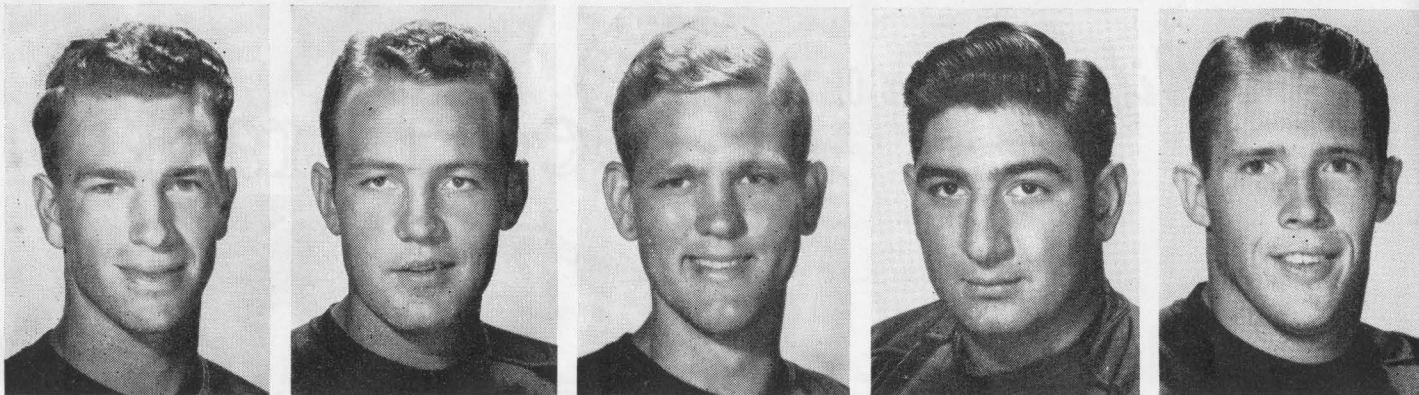


Better performance, less maintenance, lower operating costs—the specifications of any J. D. Reed Company work order.

Phone: OLive 4351



SALES ★ SERVICE



70—Charles Bittner 79—Buddy Edwards 75—Ted Watson 69—Fred Curry 78—Jack Davis

CHARLES BITTNER, Tackle—Junior, 200, 6'2". Another of the several sophs of '49 holdouts...this Corsicana boy can be of some help.

BUDDY EDWARDS, Tackle—Soph, 225, 6'2". Only out-of-stater on squad, and he lives less than mile from Texas on Arkansas side of Texarkana...question mark performer because of knee injury...off-season operation apparent success, but time will tell...friendly, talkative young man.

TED WATSON, Tackle—Junior, 202, 6'3". Still another of line-men holdouts of '49 sophs... one of biggest boys on squad in height...played high school ball at Corpus Christi, but parents recently moved to Fort Worth.

FRED CURRY, Guard—Soph, 225, 6'. Biggest of the guards, the Houston boy may see lots of action.

JACK DAVIS, Tackle—Soph, 215, 6'1". A big fellow from East Texas, Palestine...is slated to see a lot of service this fall... showed much promise in spring drills.

LEADERS!

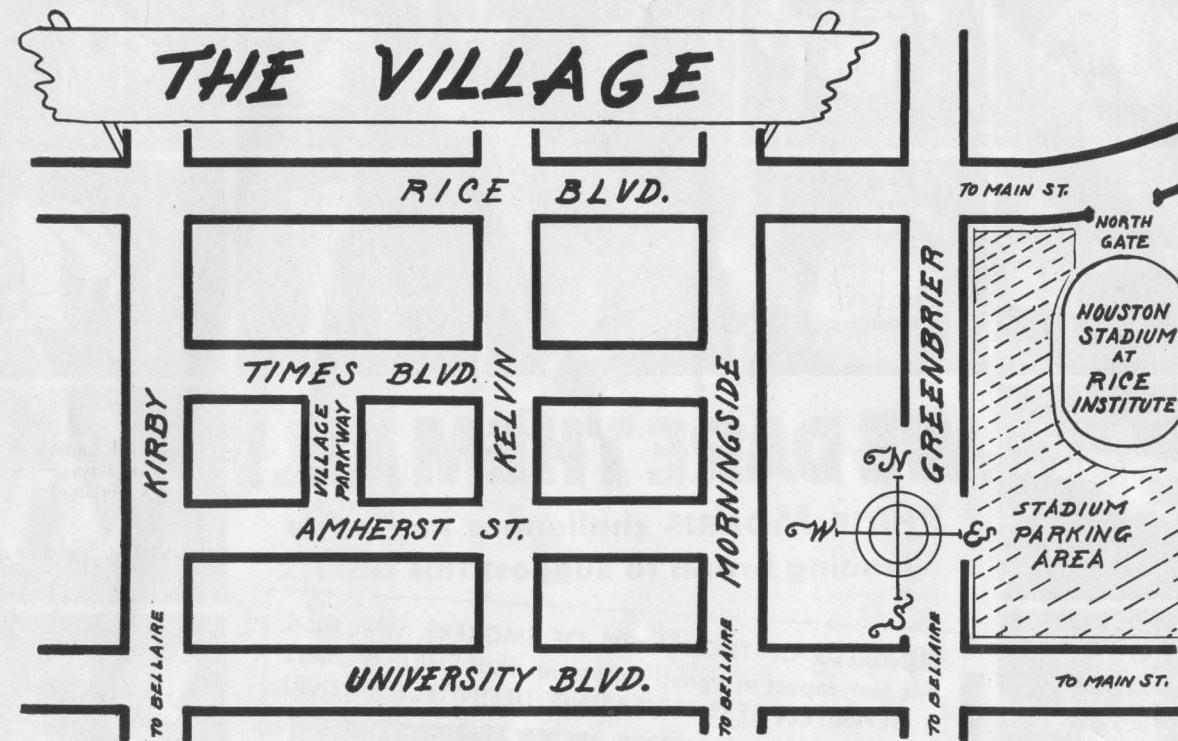
Humble Esso Extra Gasoline was first in the field of post-war gasolines for post-war automobiles... is still the leader... with extra anti-knock performance, extra power, extra quick starting and pick-up... plus a patented solvent oil to keep engines extra clean. Many automobile dealers recommend Esso Extra gasoline to new car owners; drivers of any make and model will find Esso Extra's extra performance something extra for their money.

Humble Esso Extra Motor Oil is the best you can buy. That is a statment of fact based on road tests and laboratory analysis. It is the only motor oil that combines extra cleaning quality, extra wetting ability, extra acid and sludge resistant characteristics with highest viscosity index. Users recommend Humble Esso Extra Motor Oil.

- Stop at any Humble sign for extra service
- ... to fill up with Esso Extra gasoline
- ... to change to Esso Extra Motor Oil.



HUMBLE OIL & REFINING COMPANY



THURSDAY NIGHT IS VILLAGE NIGHT

YOU CAN FIND IT IN THE VILLAGE

It is the answer to the ever increasing demand for an unclogged business district with plenty of parking space.

Over 200 stores to fill your every need.

Sponsored by the Village Association — an Association of Merchants and Businessmen formed to give to the surrounding community the finest shopping center in the South.

- | | |
|-------------------------------------|-----------------------------------|
| 2 Auto Supply & Appliance Stores | 2 Insurance Agencies |
| 2 Auto Repair Shops | 3 Interior Designers & Upholstery |
| 1 Bakery | 4 Jewelers |
| 1 Bank | 1 Kitchen Designer |
| 7 Beauty and Barber Shops | 12 Ladies Ready to Wear |
| 1 Bicycle Shop | 1 House of Lamps |
| 2 Book Stores | 5 Laundries |
| 2 Camera Shops | 3 Liquor Stores |
| 1 Candy Store | 3 Lounges |
| 8 Cafes | 3 Meat Markets |
| 2 Children's Wear | 3 Men & Boys Shops |
| 4 Cleaners | 2 Newspapers |
| 2 Dancing Studios | 3 Paint & Wallpaper Stores |
| 3 Developers & Leasers | 1 Post Office |
| 3 Dentists | 1 Picture Framing Store |
| 2 Department Stores | 6 Physicians & Surgeons |
| 4 Drug Stores | 4 Radio & Television |
| 3 Drive in Grocers | 4 Real Estate Agencies |
| 2 Engineers | 1 Roofing Contractor |
| 2 Florists | 1 Seed Store |
| 1 Fabric Center | 1 Sewing Machine Center |
| 2 Food Lockers | 4 Service Stations |
| 4 Furniture Stores | 3 Shoe Repairs |
| 4 Gift Shops | 4 Shoe Stores |
| 4 Grocery Stores | 1 Specialty Shop |
| 1 American Legion Hall | 2 Sporting Goods |
| 2 Heating & Home Improvement Stores | 1 Slenderizing System |
| 1 Houseware Store | 1 Theatre |
| 3 Home Appliance Stores | 2 Variety Stores |
| 1 Ice Cream Store | 2 Weavers |

1 OFF-SIDE

2 ILLEGAL POSITION or PROCEDURE

3 ILLEGAL MOTION or SHIFT

4 DELAY of GAME

5 PERSONAL FOUL

6 ROUGHNESS and PILING ON

7 CLIPPING

8 ROUGHING KICKER

9 UNSPORTSMANLIKE CONDUCT

10 HOLDING by DEFENSE

11 ILLEGAL USE of HANDS and ARMS

12 INTENTIONAL GROUNDING

13 ILLEGALLY PASSING or HANDING BALL FORWARD

14 FORWARD PASS or KICK CATCHING INTERFERENCE

15 INELIGIBLE RECEIVER DOWN FIELD on PASS

16 BALL ILLEGALLY TOUCHED, KICKED or BATTED

17 INCOMPLETE FORWARD PASS; PENALTY DECLINED; NO PLAY or NO SCORE

18 CRAWLING; HELPING the RUNNER or INTERLOCKED INTERFERENCE

19 TOUCHDOWN or FIELD GOAL

20 SAFETY

21 TIME-OUT

CALL FOR PHILIP MORRIS

ESTABLISHED OVER 100 YEARS
PHILIP MORRIS & Co. Ltd.
 SPECIAL BLEND
 MADE IN U.S.A.
 PHILIP MORRIS & CO. LTD., INC. NEW YORK

WE DARE THEM ALL!

PHILIP MORRIS challenges any other leading brand to suggest this test!

HUNDREDS OF THOUSANDS OF SMOKERS, who tried this test, report in signed statements that **PHILIP MORRIS** is **DEFINITELY LESS IRRITATING, DEFINITELY MILDER!**



1 ... Light up a PHILIP MORRIS. Just take a puff—DON'T INHALE—and s-l-o-w-l-y let the smoke come through your nose. Easy, isn't it? And NOW ...

2 ... Light up your present brand. Do exactly the same thing—DON'T INHALE. Notice that bite, that sting? Quite a difference from PHILIP MORRIS!

Try this simple test. We believe that you, too, will agree... **PHILIP MORRIS** is indeed, America's **FINEST** Cigarette!

NO CIGARETTE HANGOVER

means **MORE SMOKING PLEASURE!**

CALL FOR PHILIP MORRIS

Have a Coke

DRINK **Coca-Cola**



RICE (OFFENSE)

BY POSITIONS						
LE	LT	LG	C	RG	RT	RE
Howton 84	Walls 73	Little 61	Stonestreet 55	Neumann 62	Watson 75	McCurry 80
Boughton 85	Winship 77	Verrett 60	Day 50	Stearns 67	Moore 76	B. Allen 11
QB						
Glass 16						
Carswell 25						
LH			RH			
Wyatt 44			Burkhalter 12			
Proctor 45			Campbell 20			
FB						
Glauer 42						
Braden 23						

T. C. U. (DEFENSE)

BY POSITIONS						
LE	LT	LG	C	RG	RT	RE
Bill Moorman 80	Conaway 77	Zimmerman 62	Eubank 53	Buck 64	Struska 74	Bob Moorman 85
Martin 84	Marable 72	Willingham 61	Pitcock 55	Hughes 79	Wilburn 73	Vaught 82
QB						
Tompkins 27						
Bassinger 47						
LH			RH			
McFarland 22			Hickey 11			
Harville 21			Medanich 14			
FB						
Flowers 34						
Amburg 31						

OFFICIALS

Referee: Clifford Shaw (Arkansas)
 Umpire: Maxey Hart (Texas)
 Head Linesman: Gene Bedford (S. M. U.)
 Field Judge: Clifford Domingue (Texas A. & M.)

See line-ups on page 24 for T.C.U. offense and Rice defense.

T. C. U. SQUAD

10—Johnny Dunn, '51	B	21	6'2"	175
11—Jim Hickey, '51	B	22	5'11"	175
13—Marshall Harris, '53	T	20	6'0"	210
14—John Medanich, '52	B	22	5'11"	185
15—Malvin Fowler, '53	B	19	6'1"	196
21—John Harville, '53	B	18	6'2"	190
22—Bob McFarland, '52	B	20	6'2"	165
24—Bobby Harding, '53	B	19	6'1"	181
27—Homer Tompkins, '51	B	23	5'10"	165
31—Jim Amburg, '53	B	19	6'	200
32—Bobby Jack Floyd, '53	B	20	5'11"	200
34—Keith Flowers, '52	B	20	6'	193
35—Homer Ludiker, '51	B	24	5'10"	205
37—Don Martin, '53	B	20	6'	185
38—Jack Ray, '53	G	19	6'	220
39—John Morton, '52	B	21	6'3"	220
42—Dan Wilde, '52	B	20	5'11"	175
44—Duane Grissent, '53	B	21	6'	180
45—Gilbert Bartosh, '53	B	20	5'10"	175
46—Bennie Poarch, '53	G	19	6'	200
47—Dexter Bassinger, '51	B	22	5'11"	180
51—Carlton McCormack, '53	C	19	6'1"	240
52—Tommy Moorman, '53	C	20	6'	195
53—Max Eubank, '51	C	21	6'	205
54—Bobby McEarchern, '53	C	21	5'11"	195
55—Roy Pitcock, '52	C	21	5'10"	180
58—Robert Zotz, '53	T	19	6'	228
60—Alton Taylor, '52	G	22	5'11"	178
61—Billy Willingham, '51	G	23	5'10"	215
62—Herbert Zimmerman, '52	G	20	6'	195
63—Tom Evans, '53	G	19	6'	204
64—Bill Buck, '53	G	20	6'1"	210
65—Dick Lowe, '51	G	22	6'1"	188
66—Mickey Teems, '53	G	19	6'	203
67—Hubert Parret, '53	G	19	5'11"	210
68—Milton Farmer, '51	G	21	6'	197
69—Jack Ramsey, '53	G	19	5'11"	204
70—Jack Temple, '53	T	19	6'1"	207
72—Clarence Marable, '51	T	24	6'3"	220
73—Eddie Wilburn, '53	T	19	5'11"	215
74—Frank Struska, '51	T	21	6'1"	213
76—Willie Mathis, '51	T	23	6'1"	200
77—Douglas Conaway, '52	T	20	6'2"	225
78—Charles Lowry, '53	T	19	6'1"	215
79—Norman Hughes, '52	T	21	6'5"	200
80—Bill Moorman, '51	E	21	6'1"	195
81—Charles Rogers, '53	E	19	6'1"	176
82—Teddy Vaught, '53	E	19	5'11"	185
83—Wilson George, '52	E	20	6'2"	191
84—Wayne Martin, '53	E	19	6'	187
85—Bob Moorman, '51	E	21	6'	195
86—Joe Knapp, '53	E	19	5'11"	195
87—Bob Blair, '53	E	19	6'2"	190
89—Bill Hill, '53	E	19	6'	190

THE LARGEST SELLING CIGARETTE IN AMERICA'S COLLEGES

BY LATEST NATIONAL SURVEY



RICE SQUAD

10—Sammy Burk '53	B	18	5'11"	175
11—Bobby Allen '53	E	19	6'2"	170
12—Billy Burkhalter '52	B	20	5'10"	175
14—Elywn Stobaugh '53	B	19	5'11"	160
15—Dickie Bob Haddox '53	B	18	5'9"	165
16—Vernon Glass '51	B	21	5'11"	170
19—Donald Dean '53	E	19	5'11"	185
20—Donald Campbell '51	B	23	5'10"	168
21—Tom McMillan '53	B	18	5'10"	170
22—Gene Silver '52	B	21	5'10"	160
23—Emmanuel Braden '52	B	23	6'	180
25—Harmon Carswell '51	B	23	5'11"	167
26—Dan Drake '53	B	19	6'2"	190
31—Teddy Riggs '52	B	21	5'10"	172
35—Bill Frazier '53	B	19	5'10"	162
36—Billy Ed Daniels '53	B	19	6'	175
40—Jerome Bindseil '53	B	19	5'11"	184
42—George Glauser '51	B	21	6'2"	195
44—Sonny Wyatt '51	B	22	5'8"	172
45—Rex Proctor '51	B	21	5'10"	173
49—Doyle Weldon '51	B	22	6'	210
50—Jack Day '52	C	20	6'	200
54—Don Rhoden '53	C	18	5'11"	195
55—Lee Stonestreet '51	C	21	6'	205
56—Weldon Wersterfer '53	C	19	6'	196
60—Simon Verrett '52	G	21	5'9"	200
61—Gene Little '52	G	21	6'	210
62—Ike Neumann '51	G	23	5'11"	197
64—Don Mullenix '52	G	20	6'1"	195
65—Ed McLeaish '52	G	21	6'1"	207
66—Hans Wagner '53	G	19	6'1"	192
67—Charles Stearns '52	G	20	6'	202
68—John Boswell '53	T	19	6'1"	205
69—Fred Curry '53	G	19	6'	225
71—Bill Crockett '53	T	18	6'2"	203
72—Lynn Preston '52	T	20	6'1"	215
73—Glenn Walls '51	T	21	6'3"	210
74—Paul Gioski '51	T	24	6'5"	250
75—Ted Watson '52	T	20	6'4"	210
76—Bobby Moore '53	T	20	6'2"	200
77—Bob Winship '51	T	20	6'2"	235
78—Jack Davis '53	T	19	6'1"	205
79—Buddy Edwards '53	T	19	6'3"	230
80—Sonny McCurry '52	E	20	6'4"	192
81—George Pontikes '53	E	19	6'1"	198
82—George Wright '53	E	20	6'1"	182
83—A. J. Loth '53	T	19	6'1"	220
84—Bill Howton '52	E	20	6'2"	177
85—Al Boughton '51	E	22	6'5"	200
86—Billy Wright '52	E	22	6'1"	210
87—Hardy Dean '52	E	21	6'1"	180
88—Billy Fisk '53	E	19	6'2"	177
89—Frank Allen '51	E	23	6'1"	182

Always **B**uy **MUCH MILDER** **C**CHESTERFIELD

Have a Coke

DRINK

Coca-Cola

TRADE-MARK ®

T. C. U. (OFFENSE)

BY POSITIONS

<u>LE</u>	<u>LT</u>	<u>LG</u>	<u>C</u>	<u>RG</u>	<u>RT</u>	<u>RE</u>
George 83	Marable 72	Lowe 65	Eubank 53	Farmer 68	Mathis 76	Bill Moorman 80
Bob Moorman 85	Hughes 79	Willingham 61	McCormack 51	Taylor 60	Struska 74	Vaught 82

QB

Bartosh
45
Wilde
42

LH

McFarland
22
Tompkins
27

RH

Morton
37
Hickey
11

FB

Floyd
32
Harville
21

RICE (DEFENSE)

BY POSITIONS

<u>LE</u>	<u>LT</u>	<u>LG</u>	<u>C</u>	<u>RG</u>	<u>RT</u>	<u>RE</u>
Howton 84	Winship 77	Verrett 60	Stonestreet 55	Stearns 67	Giroski 74	McCurry 80
Boughton 85	Moore 76	Crockett 71	Day 50	Mullenix 64	Moore 76	B. Allen 11

QB

Proctor
45
Haddox
15

LH

Silver
22
Braden
23

RH

Burkhalter
12
Burk
10

FB

Neumann
62
Weldon
49

OFFICIALS

Referee: Clifford Shaw (Arkansas)
Umpire: Maxey Hart (Texas)
Head Linesman: Gene Bedford (S. M. U.)
Field Judge: Clifford Domingue (Texas A. & M.)

See line-ups on page 21 for T.C.U. defense and Rice offense.

COMPLIMENTS OF

WHITAKER ELECTRIC CO.

Electrical Contractors
for Rice Field House

900 Pacific, Houston 6, Texas

LY-1661

JU-4643

GRANT E. WHITAKER, Owner



KARR CONSTRUCTION
AMERICA'S FINEST BEDDING ENSEMBLE

NOW comes PARKER'S

Lastic Foam

RUBBER MATTRESS

AND

PARKER'S

Custom Quality 10" Box Spring

PARKER
BEDDING COMPANY

OF HOUSTON

FREDERICK PARKER

JOEL PARKER

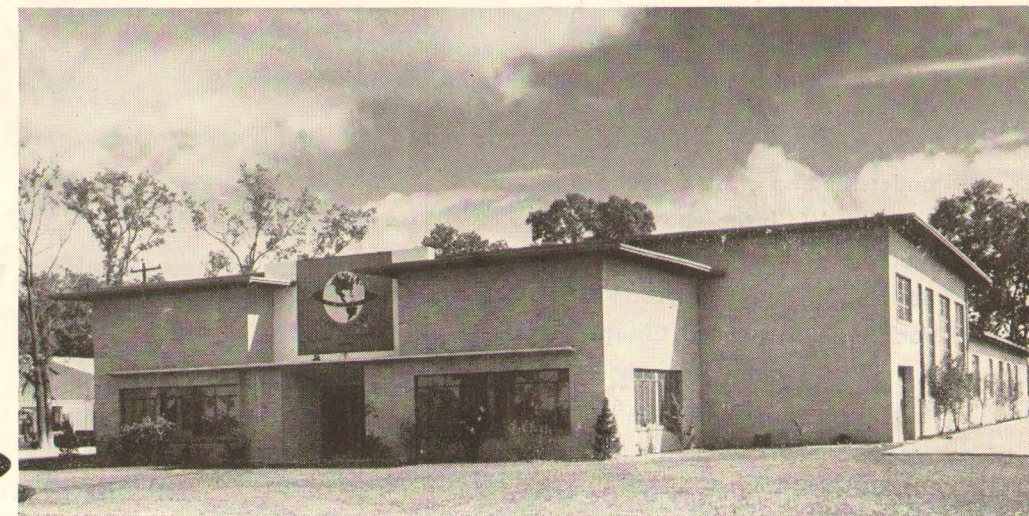
UNIVERSAL

PACKING & GASKET CO.

5210 CLINTON DRIVE

CHarter 6757

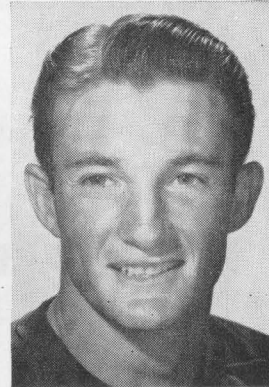
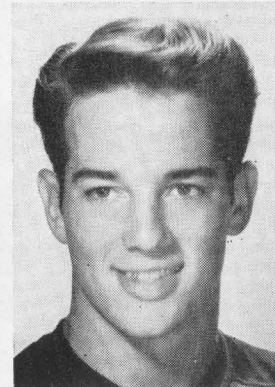
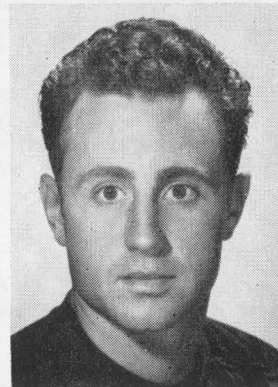
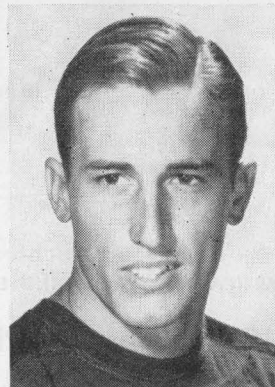
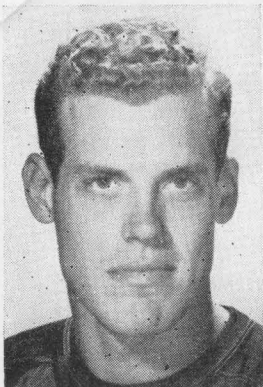
Houston Owned
and Operated



Home of Universal Where Packings and Gaskets
Are Manufactured for Every Industrial Need

HOUSTON COCA COLA BOTTLING COMPANY ★ 2800 BISSONNET

The Rice Athletic Association Would Appreciate You Patronizing Our Advertisers



42—George Glauser

31—Teddy Riggs

23—Emmanuel Braden

12—Billy Burkhalter

22—Gene Silver

GEORGE GLAUSER, Back—Senior, 195, 6'2". Made a fine showing in spring training...can be a surprise...runs with knees high...has long stride...can run wide as well as up the middle...as rough a man as there is on squad...like Glass, has only one year to be a regular, but should make most of it as successor to Bobby Lantrip.

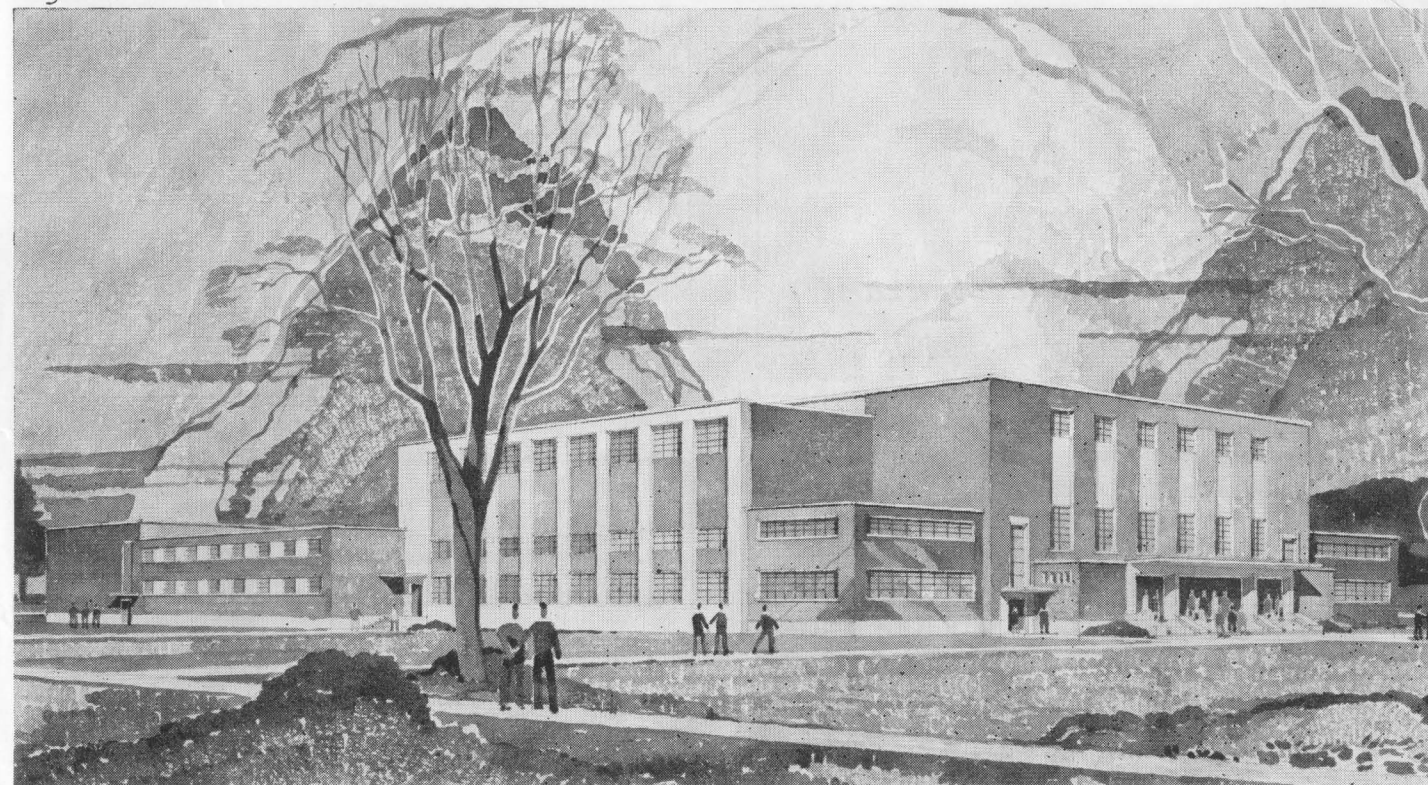
TEDDY RIGGS, Back—Junior, 172, 5'10". One of fastest of the backs, was standout as frosh in '48...should see more action this fall...nicknamed "Speed"—both for own ability and after the famous tobacco auctioneer.

EMMANUEL BRADEN, Back—Junior, 180, 6'. Returns after '49 ineligibility...will be valuable utility man...can play both right half and fullback, safety or halfback on defense...has speed,

quick start...hails from Eagle Lake, which produced Rice All-American back Bill Wallace of early thirties.

BILLY BURKHALTER, Back—Junior, 175, 5'10". Can be "the man" this fall...made the team in '49 with fine performance in Texas game subbing for injured senior Van Ballard...went on to be rated best back in Cotton Bowl game over the vaunted Charley Justice. Like running mate, Wyatt, relies on quick start on "T" for success, seldom loses yardage...second team All-Conference in '49...was all-state at Texarkana...smallish, clean-cut features, does not resemble top gridder until he starts running...good pass receiver.

GENE SILVER, Back—Junior, 170, 5'10". Was Riggs' running mate on '48 frosh...fast starter...all-around athlete, he's member of Rice golf team, one of state's top softball pitchers.



THE NEW PHYSICAL EDUCATION BUILDING

In addition to the new stadium, another fine athletic structure is being added to the campus scene at The Rice Institute this year. Just a few hundred yards from the southeast corner of the stadium is located the beautiful new Physical Education Building, now in the final stages of construction.

Here, beginning this winter, Rice Institute will play host to some of the nation's outstanding basketball teams on the Autry Court. Over 6,000 spectators can be accommodated for cage games.

The first game in the new gym will be against the Tulane University Green Wave on the night of December 9th. The Owl cagers also have home games with Northwestern University (Dec. 20), the Columbia University Lions of New York (Dec. 22), and Georgia Tech (Jan. 2) in addition to several other non-

conference contests and the annual clashes with Southwest Conference foes S. M. U., Texas, T. C. U., Baylor, Texas A. & M., and Arkansas.

The basketball court will have such features as a four-sided electrical scoreboard, glass backboards, and a 124 foot press box suspended from the roof above the court.

The new physical education building will have a special large trophy case in the spacious main lobby.

The building will serve as headquarters for all officials of the athletic and physical training departments.

The new gymnasium will have a large indoor swimming pool, handball courts, squash courts, boxing, wrestling, tumbling rooms and a target range.

There will be a wing for women's physical training facilities.

We are Proud . . .

Of our many young depositors who are starting now to acquire the independence of a savings account—the satisfaction of planned financing.

For over 30 years it has been our policy to extend to our customers a friendly understanding of their financial responsibilities. We invite you to drop by 712 Main to talk with us about our Free Services, Savings Plans, Loan Plans, Trust Facilities and Normal Charge Services.

Member Federal Deposit Insurance Corporation

National Bank of Commerce
OF HOUSTON
"The Bank of Courtesy"



D. B. McDANIEL CADILLAC
COMPANY

1320 MILAM STREET

HOUSTON, TEXAS

AFTER THE GAME . . .

Bar and Dining Room
Open Till Midnight

Madeline's Restaurant

4218 MONTROSE

JA 1944



220 MAIN STREET

"THE BANK OF CORDIALITY"

Member Federal Deposit Insurance Corporation



EXTRA GOOD
DAIRY PRODUCTS
MILK-ICE CREAM
JU-4163

Sanitary
FARM DAIRIES

It takes good teamwork to build buildings
and to play championship football.

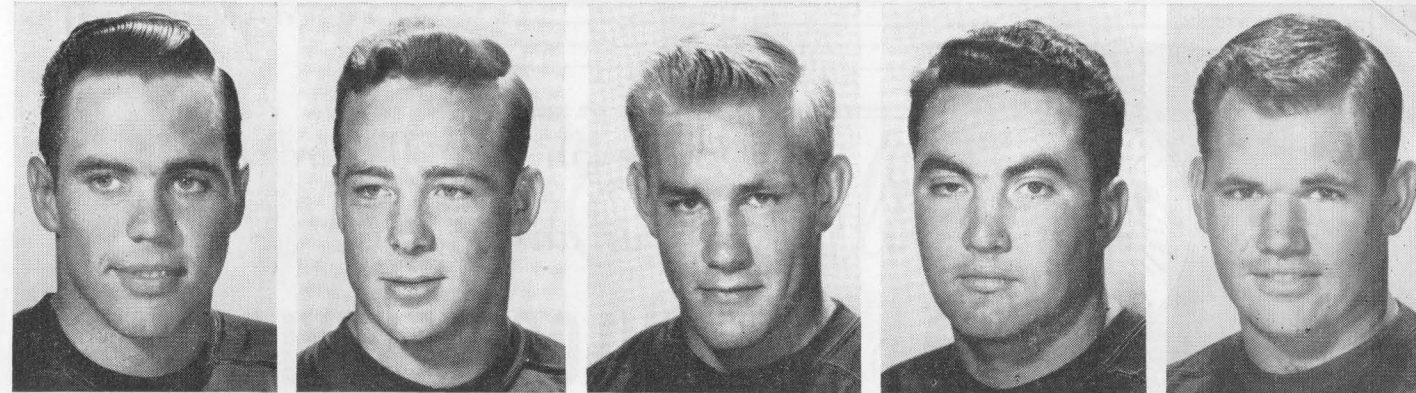
— CONGRATULATIONS —

W. S. Bellows Construction Corp.



Eighteen years experience as an integrated geophysical
research organization . . . your assurance of accurate inter-
pretation of data obtained thru advanced instrumentation
in the hands of capable personnel. Seismic Explorations,
Incorporated, 1007 South Shepherd, Houston, Texas.

The Rice Athletic Association Would Appreciate You Patronizing Our Advertisers



50—Jack Day

56—Weldon Wersterfer

54—Donald Rhoden

55—Lee Stonestreet

60—Simon Verrett

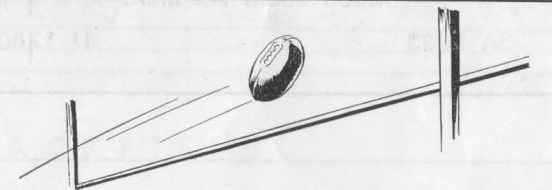
JACK DAY, Center—Junior, 210, 6'. Will team with Stonestreet and soph Rhoden to handle most of Owl center chores, with the three dividing time at the two linebacker posts. . . has the ability, needs game experience.

WELDON WERSTERFER, Center—Soph, 196, 6'. A high school "phenom" at New Braunfels, needs to improve to meet high Southwest Conference standards, but should do so. . . big and rough.

DONNIE RHODEN, Center—Soph, 185, 5'10". Has a fine chance to become a real Owl standout. . . should play a lot as sophomore. . . impressed greatly with linebacking for frosh. . . relatively small for rugged position, but should grow some more.

LEE STONESTREET, Center—Senior, 205, 6'. Bushy-browed battler from Dallas has unenviable task of replacing the great Joe Watson. . . has the right temperament for it. . . aggressive, leader type. . . good enough to get in required playing time to letter, through three senior lettermen also on squad in '49. . . will play both offense and defense, should see much action.

SIMON VERRETT, Guard—Junior, 205, 5'9". Short, stocky, solid. . . another holdout as a '49 soph. . . needs to develop speed. . . comes from rabid high school football town of Port Arthur.



KEEP THE SCORE IN YOUR FAVOR



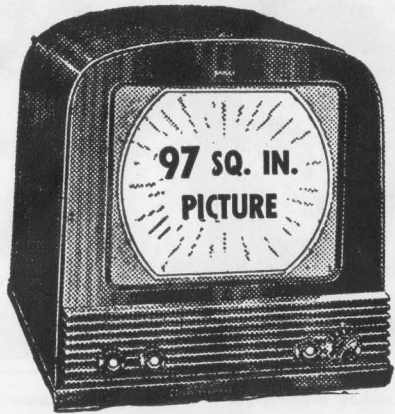
The future financial security of yourself and family need not be dependent on the "breaks" you may get in life.

A well planned Great Southern Life insurance program is the best guarantee you can have that your plans for financial security will be carried out exactly as arranged.

Ask your Great Southerner to cooperate with you in planning the life insurance program you need.



INSURANCE COMPANY
HOME OFFICE HOUSTON 1, TEXAS



... you're on the 50 yard line
at any event
with a **PHILCO TELEVISION**

1951 MODELS START AT
169.95
PLUS FED. TAX AND WARRANTY

EDMONSON'S, Inc.

2606 South Shepherd

JA 3383

LI 1780

FINEST factory trained service
LOWEST possible DOWN PAYMENT
EASIEST possible MONTHLY PAYMENTS

... Open Evenings ...

THOMPSON'S

THOMPSON-FOSTER CO., LTD.

2419 Rice Boulevard

KE 7066

JA 8660

meet the Champ . . .
NATURAL GAS

Where there's a choice of fuels, Natural Gas wins hands down! Nothing approaches its speed, dependability or flexibility—and yet it is still the most economical of all modern fuels. Homemakers, businessmen, industrialists agree—for cooking or refrigeration, heating or cooling, Natural Gas is the champion fuel, the fuel of champions!



ERNEST COKER'S

Ye Old College Inn

FAMOUS FOR THIRTY YEARS FOR THE FINEST
STEAKS AND BIG BAKED POTATOES

CLOSED TUESDAYS

6545 SOUTH MAIN STREET — LY 6484

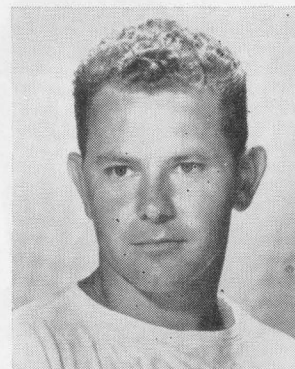
EARLE NORTH BUICK CO.

In the Famous Buick Block

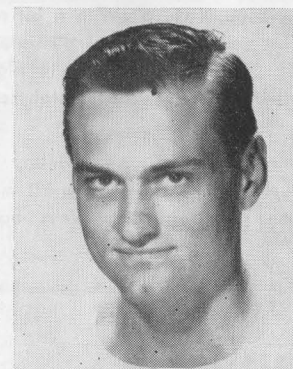
2215 MILAM

Buick Sales and Service

TEAM MANAGERS



LARRY SHRIVER



RICHARD LEEDER

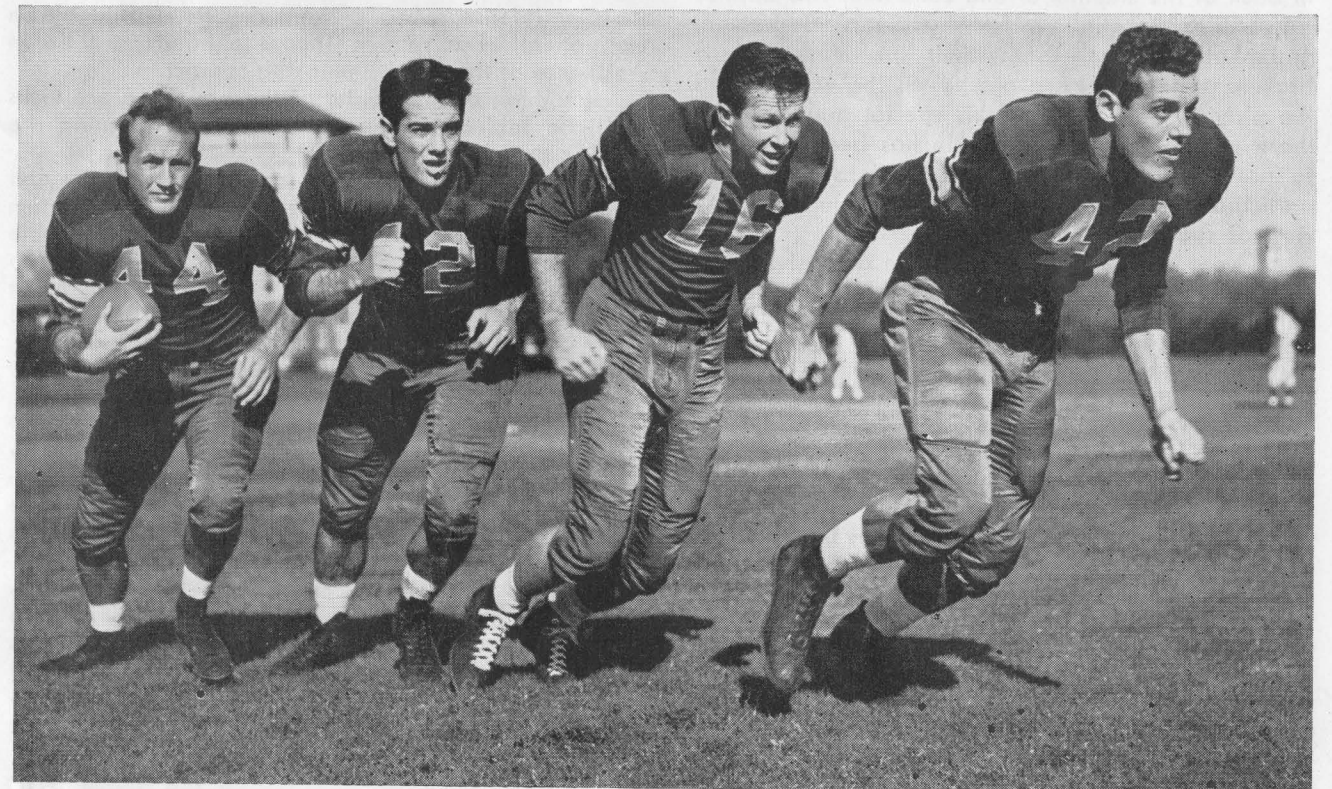
Quality
is always a **Champion**

COOPER & MATTHEWS

LUMBER CO.

H O U S T O N

RICE OWLS' BACKFIELD

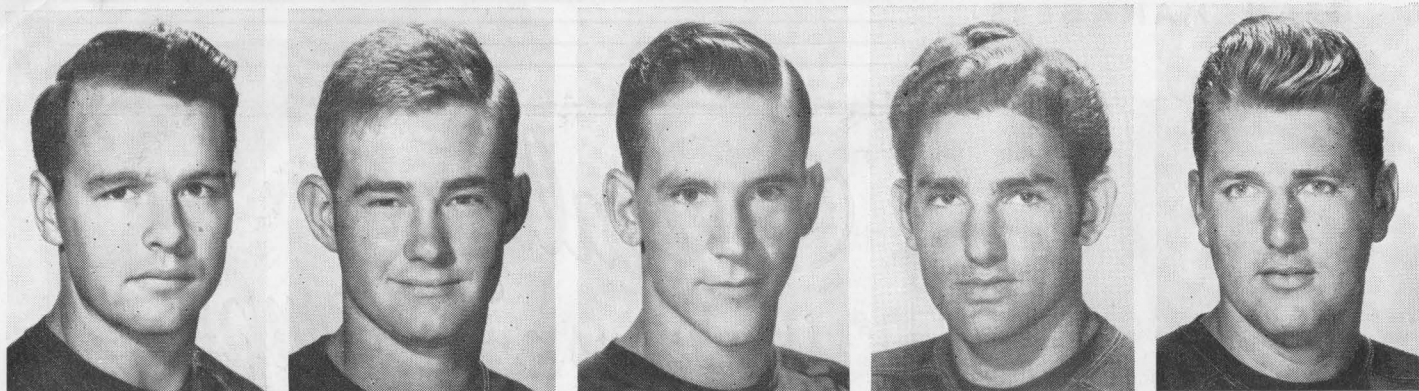


SONNY WYATT

BILLY BURKHALTER

VERNON GLASS

GEORGE GLAUSER



87—Hardy Dean 82—George Wright 88—Billy Fisk 81—George Pontikes 86—Billy Wright

HARDY DEAN, End—Junior, 180, 6'1". In addition to role as kick-off specialist, also should see some action as an end... played briefly last fall...hails from nearby Conroe.

GEORGE WRIGHT, End—Soph, 182, 5'10". A "shorty" for an end, but competent all-round performer...no kin to Houston sportswriter of same name...this George Wright is from Palestine, Texas.

BILLY FISK, End—Soph, 165, 6'. With a little more weight, this Irving youngster will become a standout...loves to play football.

GEORGE PONTIKES, End—Soph, 181, 6'. With a bit more drive and determination could be a standout...was all-state end with Lamar of Houston in '48...played all sports in high school, likely will stick to football in college...carries high school nickname still, "the Greek."

BILLY WRIGHT, End—Junior, 223, 6'1". An ex-Milby High star, this Houston lad needs just a bit less weight, a bit more speed to live up to pre-college promise...also plays baseball...lifeguard in summer.

1950 CHANGES IN FOOTBALL RULES

All persons on the sidelines must remain five feet in back of the sideline or end zone line. This applies to coaches, substitute players, trainers, policemen, and photographers. A new limit line, marked by a broken stripe, has been placed all the way around the playing field to mark this special boundary for those on the sidelines. This rule has been designed to prevent player injuries by collisions with non-participants on the sidelines, and to improve the view of spectators.

In event of a penalty against the defensive team on a try for extra point, as before the offensive will get another try if the first conversion attempt failed. However, this season if the conversion is made and the defense has fouled, yardage for the penalty will be applied against the defensive team on the play on the following kick-off. Example: Team A makes the extra point. Team B was offside on the play. Team B, having been scored on, chooses to receive the kickoff. Team A kicks off from the 45 yard line instead of the 40 yard line as before.

An effort has been made to curb the dangerous use of elbows, hands, and forearms. On offense, when a teammate of the runner uses a hand or forearm in blocking or to supplement a shoulder or chest block, the hand must be in contact with his body, and the hand or arm must be kept below the shoulders of the opponent throughout the block. However, if the player being legally blocked deliberately causes

the blocker to contact him above the shoulders, there is no penalty.

On defense, when a hand or arm is used by an opponent of a runner, then the hand must be in advance of the elbow in making contact.

Roughing of the holder of the ball for place kicks will be subject to a penalty same as roughing the kicker on punts.

If a player catches a punt or intercepts a pass and falls into his own end zone because of momentum involuntarily, or if he should be tackled before able to change direction on entering the end zone in such a manner, the ball will be dead at the point at which it was caught. The player will not be charged with a safety or touchback.

Each team now is allowed five time outs in a half instead of four as last season. This increase is designed to give teams more opportunities to get specialists, such as punters or passers, into the game for special plays. A timeout is charged each team for a substitution while the clock is in progress except when the ball changes hands, at which time both teams may substitute as many men as they desire.

Penalties governing certain maneuvers that are used very little in modern football have been taken out of the rule book. Such as, the fair catch rule is out for receivers of kicks, although the player must be given a chance to make his catch without interference. Rules governing the flying block and flying tackle have been eliminated.

RICE YELL LEADERS



TED MONTZ
Head Yell Leader

WILLIE MORENO

GORDON BAKER

EARL BELLAMY

SONGS

RICE'S HONOR

All for Rice's honor, we will fight on.
We will be fighting when this day is done;
And, when the dawn comes breaking,
We'll be fighting on, Rice,
For the Gray and Blue. We will be loyal
To Rice be true.

GRAY BONNET

Put on your old gray bonnet, with the blue
ribbon on it,
And we'll hitch Old Sammy to the fray,
And we'll rock, rock, rock 'em,
And we'll sock, sock, sock 'em,
To the end of Judgment Day.

FIGHT SONG

Fight for Rice; Rice, fight on; Loyal sons, arise!
The Blue and Gray, of Rice today
Comes breaking through the skies.
Stand and cheer! Victory's near!
Sammy leads the way.
Onward go, to crush the foe.
We'll fight for the Blue and Gray.
Rice... Fight... never dies.
Blue... Gray... in the skies.
Stand... Cheer... Rah, Rah, Rah.
Go... Go... Yeaaaaa Rice!

YELLS

"THE AXE"

Give 'em the axe,
Give 'em the axe,
Give 'em the axe,
Where?
Right in the neck,
Right in the neck,
Right in the neck,
There!
Give the axe, the axe, the axe,
Where!
Right in the neck, the neck,
the neck, there!
Yea, RICE!

YEA BLUE, YEA GRAY

Yea B-L-U-E-
Yea G-R-A-Y-
Yea R-I-C-E-
Hey, Hey, Hey!

WHISPER YELL

(Whisper)
With an R
With an R
With an ICE
With an O
With an O
With a WLS
Rice Owls Fight!
Louder: Repeat same Very Loud:
Repeat same.

LOCOMOTIVE

Sssssssssssssssssss, Boom!
R-I-C-E, rah rah (slow)
R-I-C-E, rah rah (faster)
R-I-C-E-, rah rah (real fast)
Rice, Owls, Fight!

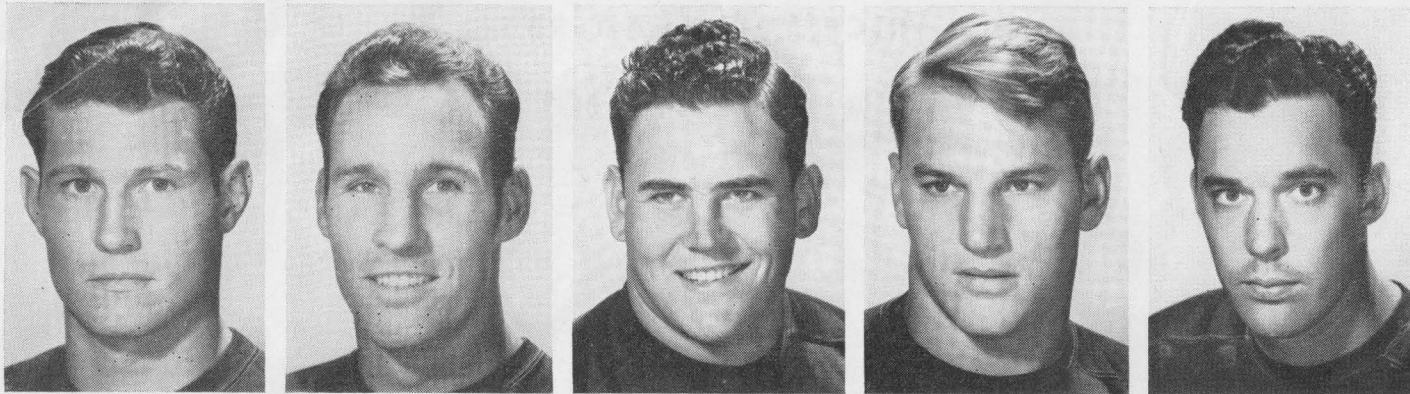
FIGHT 'EM, OWLS

Fight 'em Owls
Fight 'em Owls
Fight 'em, fight 'em,
fight 'em, Owls
Fight 'em Owls
Fight 'em Owls
Fight 'em, fight 'em,
fight 'em, Owls
Rice Owls Fight!

DELAYED YELL

Count (to self)
1, 2, 3, 4, 5, 6, 7, 8—R
1, 2, 3, 4, 5, 6, 7, 8—I
1, 2, 3, 4, 5, 6, 7, 8—C
1, 2, 3, 4, 5, 6, 7, 8—E
Rice Owls Fight!

"The Official Watch for Timing this Game is Longines... The World's Most Honored Watch"



76—Bobby Moore 74—Paul Giroski 77—Bob Winship 71—Bill Crockett 73—Glenn Walls

BOBBY MOORE, Guard—Soph, 200, 6'1". Impressive as a freshman, again in the spring...can play guard or tackle...potentially a top notch player...comes from real football country, Amarillo.

PAUL GIROSKI, Tackle—Senior, 250, 6'5". The giant of the team in stature...could be the "big man" of the line in ability...may try the "iron man" role of playing offense and defense at tough post...has improved amazingly in two years...never played in high school in Houston...did play some at Allen Academy at Bryan...strong candidate all-conference honors...one of few married men on squad.

BOB WINSHIP, Tackle—Senior, 235, 6'2". One of the biggest men in conference, slated to team with another 250-pounder, Giroski, to form first line defensive tackles...a Reagan High ex of Houston...one of most experienced of linemen...slated for heavy duty, principally on defense.

BILL CROCKETT, Tackle—Soph, 203, 6'2". Promising big fellow from Bonham...may develop into outstanding player...hard tackler.

GLENN WALLS, Tackle—Junior, 220, 6'2". Developed so fast last fall, he was not even listed in pre-season brochure...he makes this one with capital letters...offensive specialist...good blocker...one of three Dallas boys on Rice squad.

*We are proud to have shared
in the building of the fine new
Stadium and Field House.*

SHELTON W. GREER

JAMES H. GREER

DISTRIBUTORS OF

ADLAKE ALUMINUM WINDOWS

used in the Press Booth

INSULROCK structural, insulating SLABS
for sound-proofing Press and Radio Booths
Roof Deck on Field House

**"BIG TIME" FOOTBALL
TO HOUSTON**

The splendid new football stadium at Rice Institute means top notch teams of the nation will be coming to Houston in the future years.

Already the Owls have announced the scheduling of several major intersectional games to be played here, in addition to the annual battles with the familiar conference foes. More "big name" football teams will be coming this way—watch for the announcements!

So far, it has been revealed that Rice will play the U. S. Naval Academy team and the Pittsburgh Panthers here in 1951. The L.S.U. Tigers are slated to return to this stadium in 1952, and that same season the Owls will be host to the University of Wisconsin Badgers of the Western Conference.

The Rice Athletic Association Would Appreciate You Patronizing Our Advertisers

**SAVE
THAT
CAR!**



**CONTINENTAL
TRAILWAYS**



NO PARKING PROBLEMS
NO TRAFFIC WORRIES
NO DRIVING FATIGUE



NEW YORK CHICAGO
KANSAS CITY LOS ANGELES
SAN FRANCISCO LONDON, ENGLAND
GENEVA, SWITZERLAND BOSTON NEWARK OMAHA
MINNEAPOLIS MILWAUKEE OKLAHOMA CITY
TULSA DALLAS DENVER
AND OTHER CITIES FROM COAST TO COAST

HARRIS, UPHAM & Co.

Main Office: 14 Wall Street, New York

Established 1895

BROKERS

Stocks, Bonds and Commodities

Members

New York Stock Exchange New York Curb Exchange
New York Cotton Exchange Chicago Board of Trade
Chicago Stock Exchange New Orleans Cotton Exchange
and Other Leading Exchanges

HOUSTON OFFICE: 4th FLOOR, GULF BLDG.

Phone FAirfax 8191

L. D. 873-4

CHARLES I. McLEAN, Resident Partner

Private Wire System to Principal Markets and
Direct Private Wire to Our New York Office

For a sample of the finest in
Flooring, see the Rice Institute
Gymnasium. Furnished by the
Flooring Man of Houston

R. B. CLOUSE LUMBER CO.

Ask Your Builder for the Best

"CLOUSE'S FLOORING"

4717 GULF FREEWAY

HOUSTON, TEXAS

WA 4193

WA 4194

QUINBY EMPLOYMENT SERVICE

"A NAME WORTH REMEMBERING"

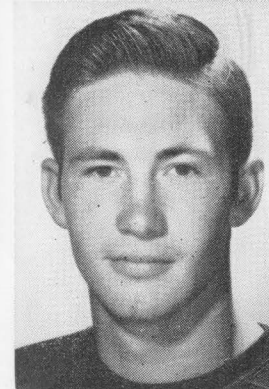
You can benefit from our many years experience in the personnel field

Executive, Office, Sales, and Technical Personnel

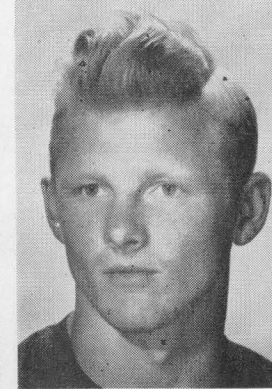
Member National Employment Board, Chamber of Commerce and Employment Counselors

409 Bankers Mortgage Bldg.

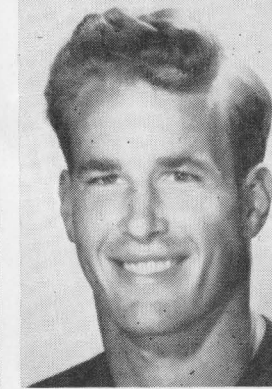
Houston 2, Texas



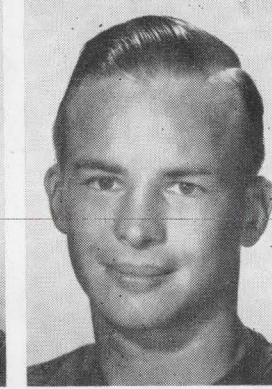
11—Bobby Allen



81—Bill Howton



80—Sonny McCurry



89—Frank Allen



85—A. L. Boughton

Compliments of

TEXAS STATE TILE TERRAZZO, INC.

3115 Golfcrest Blvd. MI-0285

☆ *The Southwest's Finest . . .*
and reasonable, too!

WELDON Cafeteria

4916 South Main

- Open Daily—11:00 a.m. through 8:30 p.m.
- Two Free Parking Lots Adjoining

South End Building Materials Co.

READY MIX CONCRETE

SAND — GRAVEL — CEMENT

South Houston Plant
5102 Galveston Road
Phone MI-3328

Kirby Drive Plant
4830 Kirby Drive
Phone LY-9131

Frederick Poultry and Egg Co.

Distributors of
Fairmont Fresh Dressed Fryers
Fairmont Sweet Cream Butter
Peter Rabbit Bran
Large White Eggs

1817 CENTER

HOUSTON, TEXAS

Jason Humber
Class of '22

W. F. Smith
Class of '26

HOWE & WISE CONSULTING ENGINEERS

JASON HUMBER

W. F. SMITH

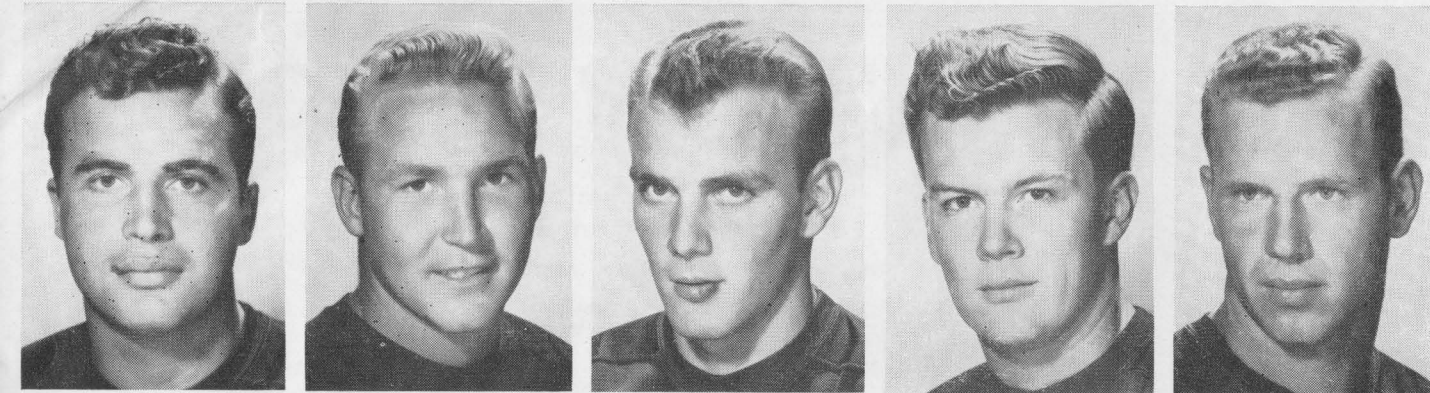
The Rice Athletic Association Would Appreciate You Patronizing Our Advertisers

The "Fresh Up" Family Drink!



*You like it...
it likes you*

BUY A CASE TODAY!



49—Doyle Weldon 24—Jerome Bindseil 63—George Sartor 72—Lynn Preston 66—Hans Wagner

DOYLE WELDON, Back—Senior, 200, 6'. Called "The Whale" by his teammates, this husky veteran from Cleburne is biggest of the backs. Listed as a fullback, Weldon is more apt to see game action as a linebacker on defense.

JEROME BINDSEIL, Back—Soph, 182, 6'. A fullback who was a star in high school with the New Braunfels Unicorns...has power but must develop more speed, which is a goal in his grid efforts this fall.

GEORGE SARTOR, Guard—Soph, 181, 5'11". Local boy who

hopes to make good...has a chance to play some ball if he continues to hustle and improve.

LYNN PRESTON, Tackle—Junior, 225, 6'1". This big fellow from West Texas (Abilene) is taking a tough engineering course, misses many workouts because of heavy lab schedule...could help a lot if he can get to drills some...also a '49 holdout for competition.

HANS WAGNER, Guard—Soph, 192, 6'. Rugged youth of German descent from Schulenberg...likes it rough...should get required polish while breaking in as a sophomore.

DICED CREAM IS A SPECIAL CATERER'S

FLAVOR FRESH ICE CREAM



Manufacturers
of the original
"ESKIMO PIE"



HOUSTON DICED CREAM CO.

Ding-How

*Houston's Most Distinctive
Chinese Restaurant*

ONE BLOCK NORTH OF THE SHAMROCK

CANTONESE COOKERY UNSURPASSED

K. C. STEAKS SEAFOODS

6800 SOUTH MAIN ST.

JA 8490

The Style

SPOT

of Houston

TOWN and COUNTRY

3603 Main St. KE-8785

BE CAREFUL

When you leave the football game and begin the trip home, drive carefully and be considerate of the many other drivers who are trying to reach home also. The Texas Safety Association warns us that the fall months of the year are also the highest highway traffic accident months, therefore, extra caution is needed to insure your safe arrival at home after the game.

**CONSOLIDATED CHEMICAL
INDUSTRIES INC.**

Heavy Chemicals for Industry

**640 MELLIE ESPERSON BLDG.
HOUSTON 2, TEXAS**

Drink . . .

CANADA DRY

Beverage



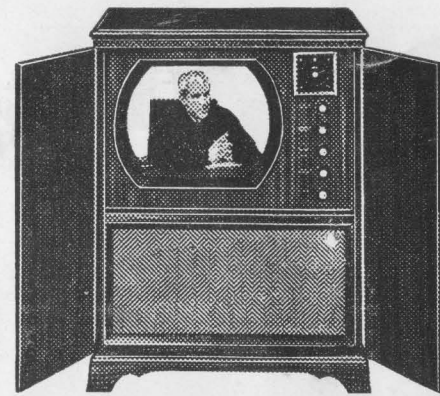
**CANADA DRY BOTTLING CO.
HOUSTON, TEXAS**

Drinks in Stadium are
cooled with Texas Ice "Sized Ice"

**TEXAS ICE & FUEL
COMPANY**



6301 Harrisburg • WAYSIDE 2154



See the MT. VERNON by DU MONT
at the television dealers with the coveted
Du Mont Franchise

DU MONT

FIRST WITH THE FINEST IN TELEVISION

Distributed by **J. A. WALSH & CO.** Houston

Emmett's Seafood Company

Here is a gift everyone enjoys. It's truly a treat for those
living miles from the Gulf.

Iced in special containers and rushed by air or railway
express to destination anywhere in the U. S. A.

Producers and Shippers
of Fresh Seafoods

AT 4526

Houston, Texas

Foote's Cafeteria

*Houston's Finest Suburban
Dining Room*

2 Blocks West of Stadium

2407 RICE BOULEVARD

Compliments of

J. M. ODOM CO.

CONTRACTORS

Austin, Texas

Compliments of

Wagers Packing Company

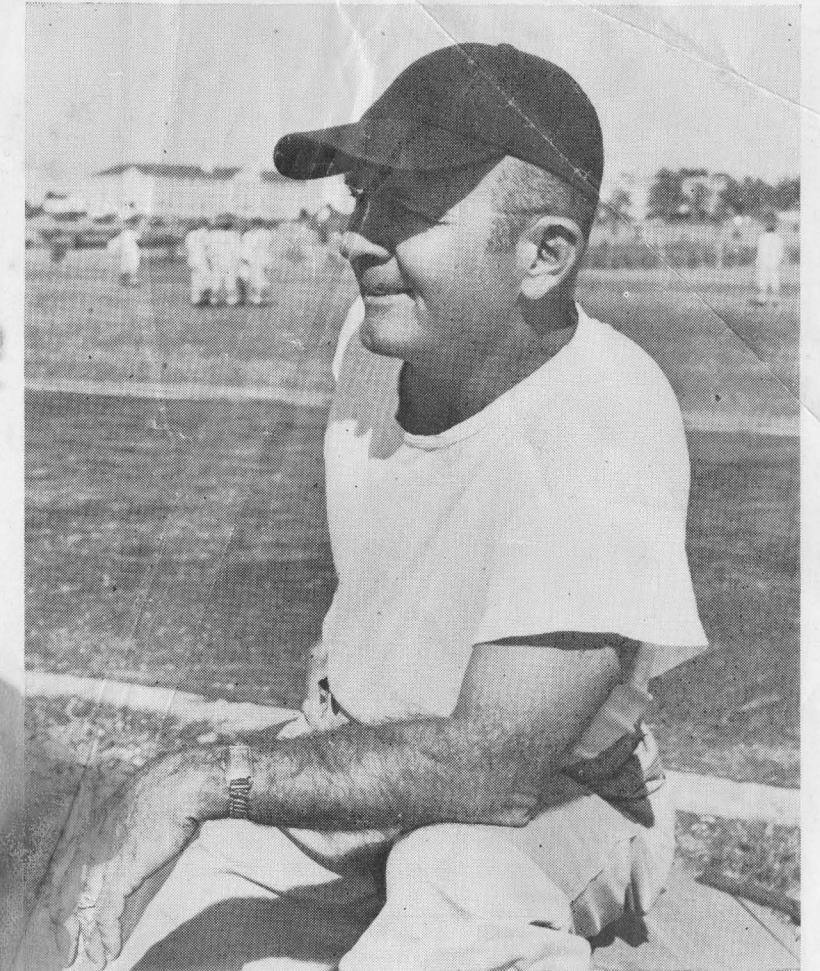
713 N. San Jacinto St.

Houston 2, Texas

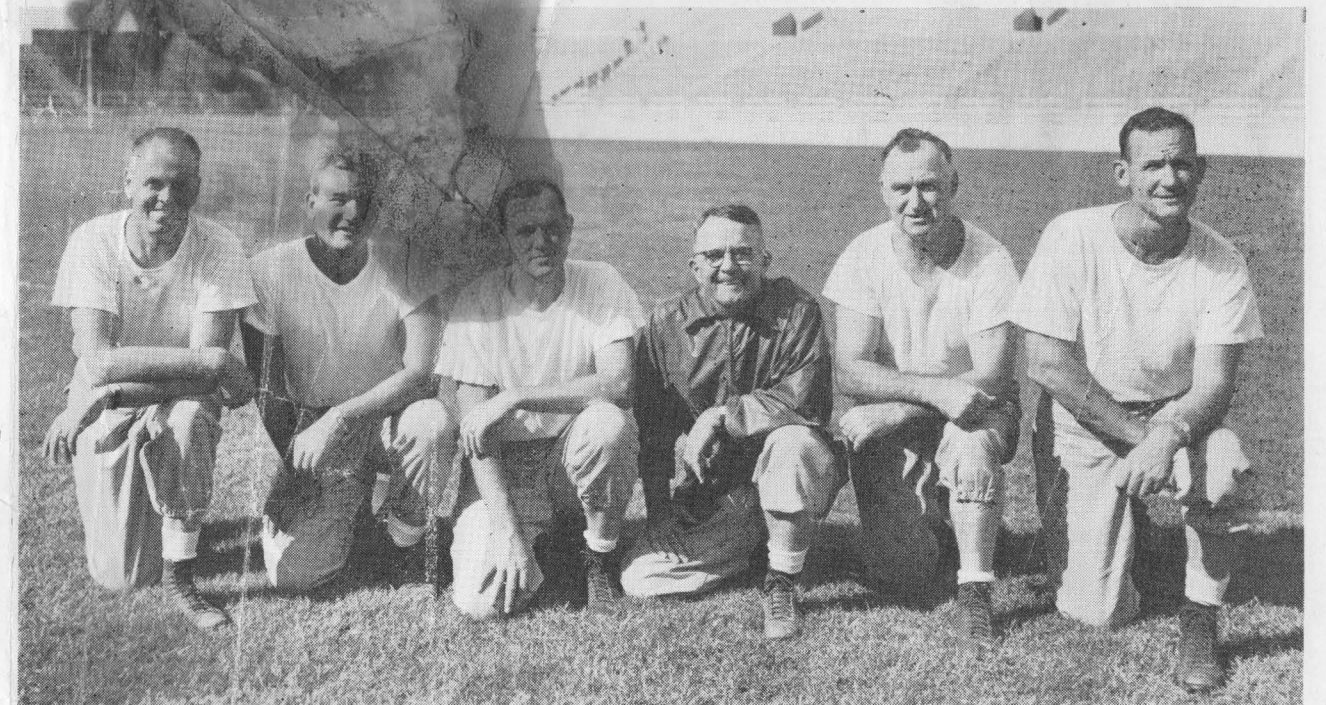
CA-9076 CA-9077

T. C. U.

COACHES

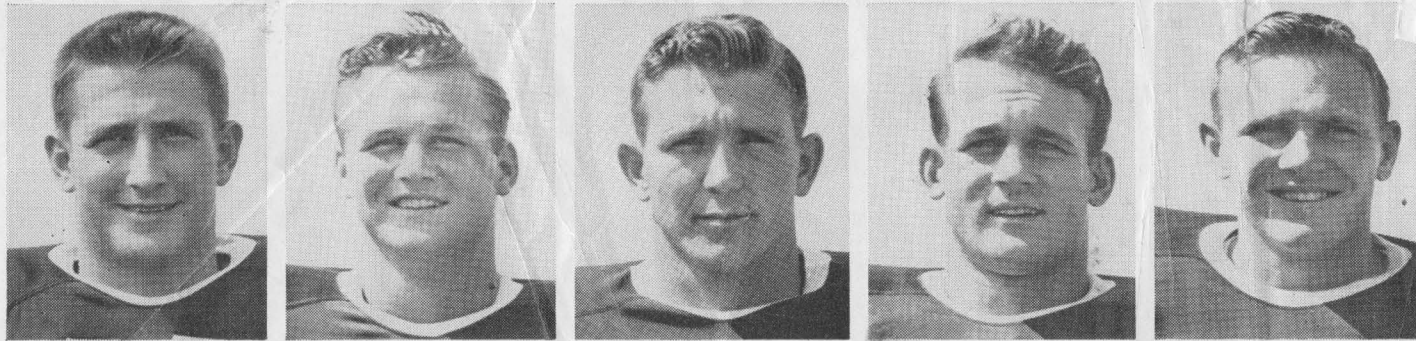


L. D. "DUTCH" MEYER



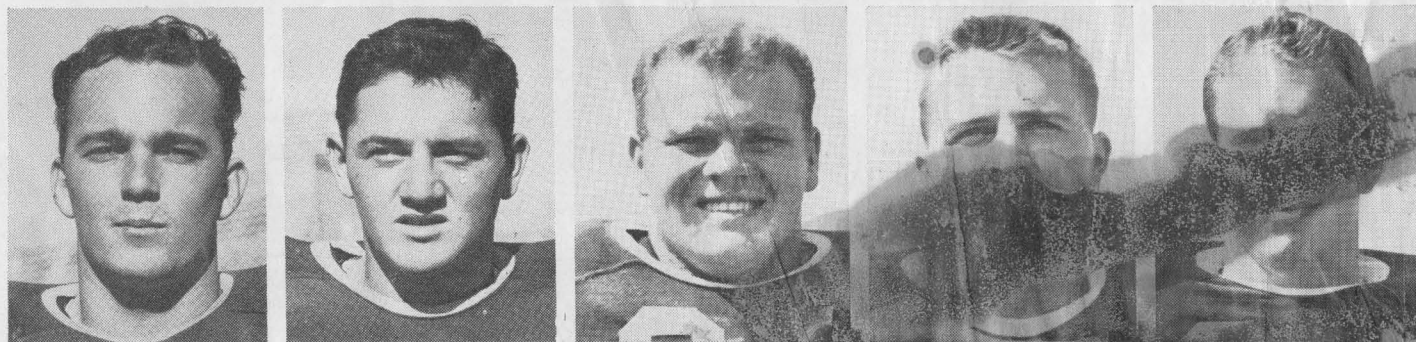
Buster Brannon, Allie White, Abe Martin, Dutch Meyer, Hub McQuillen, Walter Roach

The Rice Athletic Association Would Appreciate You Patronizing Our Advertisers



11—Jim Hickey 39—John Morton 85—Bob Moorman 14—John Medanich 34—Keith Flowers

T. C. U. HORNED FROGS



74—Frank Struska 21—John Harville 61—Billy Willingham [Name obscured] Dick Lowe

RICE FRESHMAN FOOTBALL

Here is the Rice freshman schedule:

- October 7 (N) McNeese Jr. College
AT LAKE CHARLES, LOUISIANA
- October 20 (N) S.M.U. frosh
AT HOUSTON
- October 27 (N) U. of Texas frosh
AT HOUSTON
- November 9 (N) Texas A&M frosh
AT COLLEGE STATION
- November 17 Stephen F. Austin frosh
AT HOUSTON

(All freshman home games are played at the old Rice Stadium)

Future stars of Rice games in this stadium are the young men who comprise the freshman team.

The 1950 Rice Owlets are playing five games this season, two of them home games against the freshman teams of rival Southwest Conference schools—S.M.U. and Texas—on the night before the varsity contests.

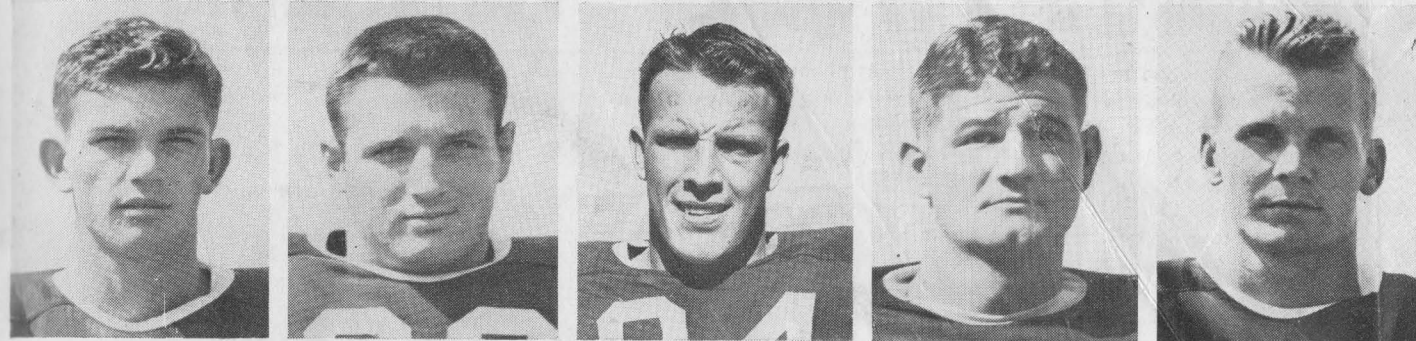
Rice freshman coach Charley Moore and his aides, Harold Stock and Jack McBride have a talented group of about 20 schoolboy stars of last year to work with on the freshman roster.



COLORFUL COWGIRL HOSTESSES WELCOME YOU ABOARD YOUR TRANS-TEXAS STARLINER . . .

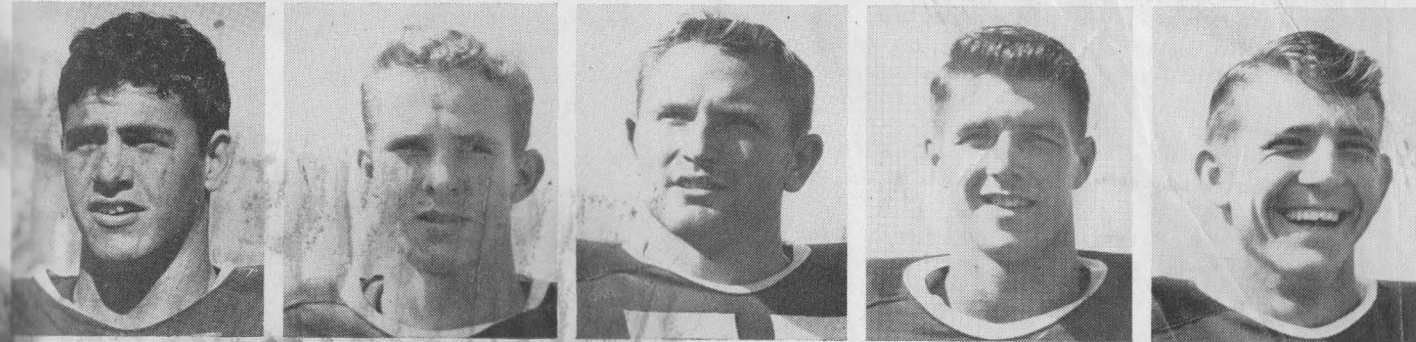
**FLY TRANS-TEXAS
STARLINERS
TO THE
SOUTHWEST CONFERENCE GAMES**

TRANS-TEXAS AIRWAYS



10—Johnny Dunn 68—Milton Farmer 84—Wayne Martin 76—Willie Mathis 83—Wilson George

T. C. U. HORNED FROGS



81—Charles Rogers 22—Bob McFarland 55—Roy Pitcock 87—Bob Blair 80—Bill Moorman



COMPLETE METROPOLITAN SERVICE

WITH RESIDENTIAL CONVENIENCE



Serving Southwest Houston

West University Place, Southside Place and Bellaire

AUTOMOBILE TELLER SERVICE

UNIVERSITY STATE BANK

KEystone 5574

6135 KIRBY DRIVE at AMHERST

FIRST STATE BANK

BELLAIRE, TEXAS
MOhawk 3413

5123 BELLAIRE BOULEVARD

MEMBER FEDERAL DEPOSIT INSURANCE CORPORATION

FOOTBALL IN '51 AT THE NEW STADIUM

More big time football is in store for grid fans of the South-east Texas area and elsewhere who visit the beautiful new 70,000 seat football stadium on the campus of Rice Institute in Houston.

Following the banner first year of operation of the big plant, several top contests are on the schedule for the 1951 season.

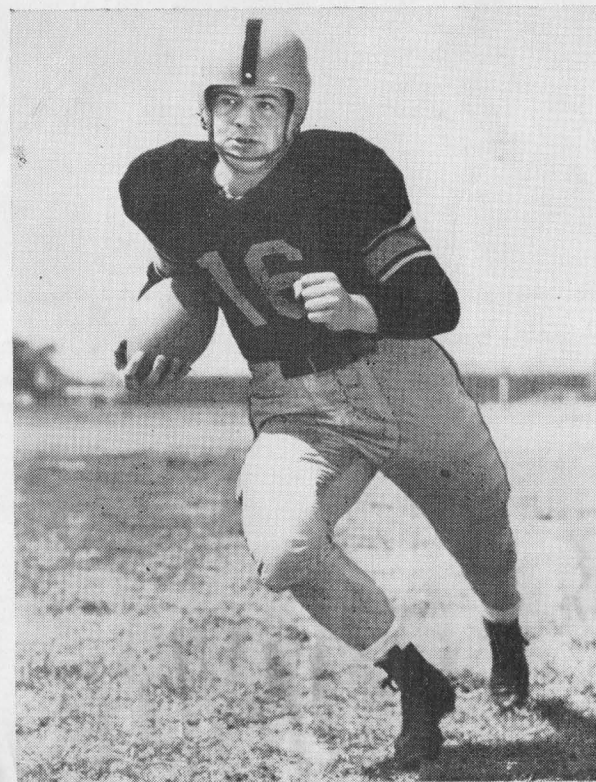
Eastern teams with great backgrounds in major college football are slated to come to Houston next season to play the Rice Owls. The United States Naval Academy eleven will play here on October 13th. Pictured at the right is the star of the Navy team, quarterback Bob Zastrow, who made the third team All-American last year as a sophomore, and has another year of eligibility. On November 3rd, the Pittsburgh Panthers make their first appearance in Texas when they play the Owls at the new stadium here.

Although the 1951 Rice schedule has not yet been completed, the system of alternating home games in the Southwest Conference assures fans of this area three more top notch games in addition to the Navy and Pittsburgh attractions. The mighty Texas A. & M. Aggies and the colorful Cadet Corps are to be here, as well as the highly regarded Baylor University Bears, and the Arkansas University Razorbacks with their split "T" formation and professional style of play.

The Owls are slated to have another fine team to battle these tough home game opponents in what should be an outstanding year on the local grid scene.

Make your plans now to attend these games. There are still option seats for sale at the new stadium, and there will be an advance season ticket sale before the 1951 grid campaign gets underway.

For details on the ticket situation at the new stadium at Rice, contact the Rice Athletic Association office, KE-1661.



BOB ZASTROW, U. S. Naval Academy

PLAYS HERE NEXT YEAR

Holt's Sporting Goods — Where Houston Shops for FUN!

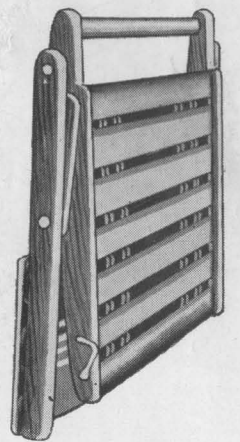
Comfort at Every Sporting Event!

"Take-Along" BACKREST



Note the
Handle for
Easy Carrying!

\$4.95
Each



The **first** really comfortable BACK REST . . . for boats, stadiums . . . and a dozen other uses! Made of selected OAK, with soft cushions of smudge-proof painted water-repellent drill. Cadmium plated metal parts with hooks for fastening to boat seat. "Take-Along" BACK REST was designed to bring comfort at a price everyone can afford! Buy yours NOW for this season's big games!

ORDER BY MAIL—get yours in time for week-end football games, for your fishing or boating trip!



HOLT'S SPORTING GOODS

Fannin at Lamar, Houston 2, Texas

Please send me () "Take-Along"
BACK REST at \$4.95 each.

NAME _____

ADDRESS _____

CITY _____ STATE _____

CASH CHARGE C.O.D.

★

Jiffy Quick

LIFT!

DRINK
Dr. Pepper
GOOD FOR LIFE!
REG. U.S. PAT. OFF.

at

DRINK A BITE TO EAT!

★

The Rice Athletic Association Would Appreciate You Patronizing Our Advertisers

"My Choice for Taste and Mildness"

